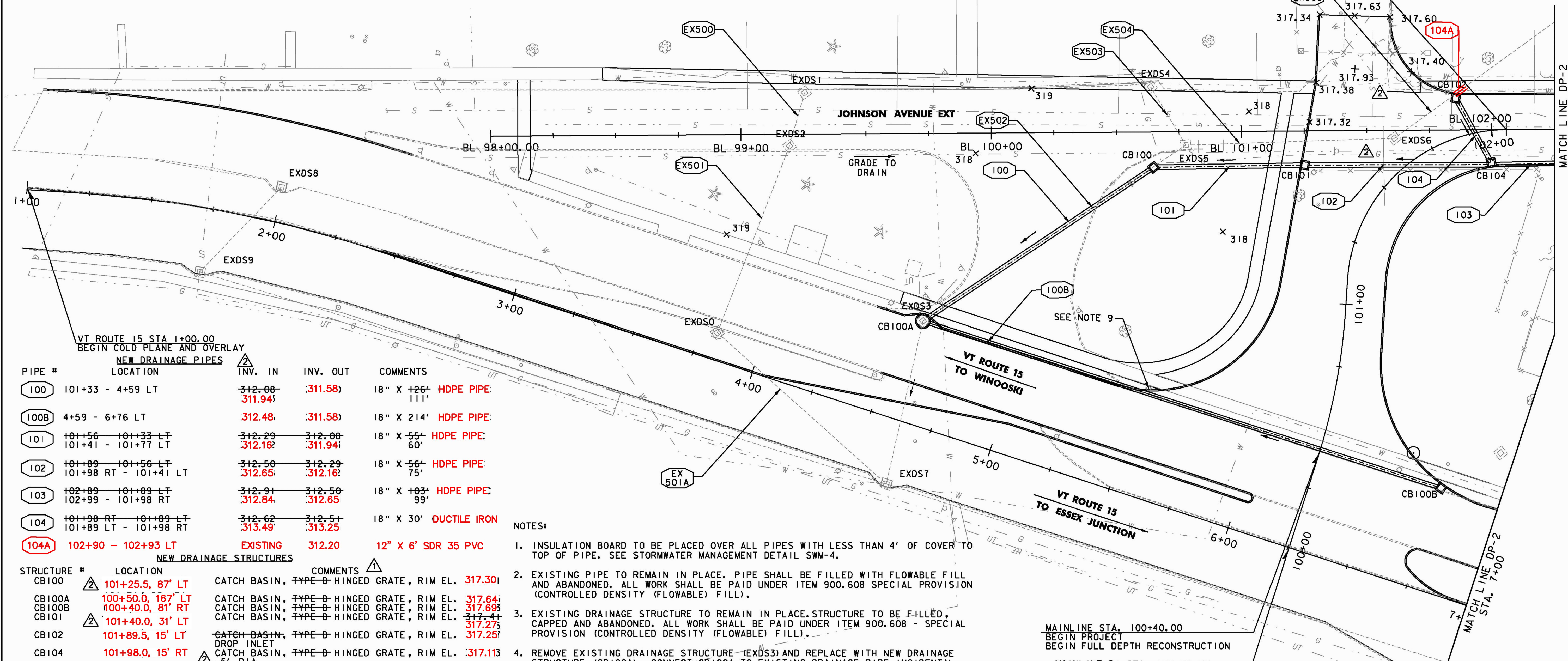


PIPE #	LOCATION	COMMENTS
EX500	3+85 - 3+86 LT	REMOVE
EX501	3+86 - 3+82 LT	SEE NOTE 2
EX 501A	3+82 - 4+65 LT - RT	SEE NOTE 2
EX502	101+33 - 4+59 LT	REMOVE
EX503	101+39 - 101+33 LT	REMOVE
EX504	101+65 - 101+33 LT	REMOVE
EX505	101+89 - 101+65 LT	SEE NOTE 5

STRUCTURE #	LOCATION	COMMENTS
EXDS0	3+82 LT	SEE NOTE 3
EXDS1	3+85 LT	REMOVE
EXDS2	3+86 LT	REMOVE
EXDS3	4+59 LT	REMOVE (SEE NOTE 4)
EXDS4	101+39 LT	REMOVE
EXDS5	101+33 LT	REMOVE
EXDS6	101+65 LT	REMOVE
EXDS7	4+65 RT	CHANGE ELEVATION
EXDS8	2+00 LT	CHANGE ELEVATION
EXDS9	1+74 RT	CHANGE ELEVATION



PIPE #	LOCATION	INV. IN	INV. OUT	COMMENTS
100	101+33 - 4+59 LT	312.08 311.94	311.58	18" X 26' HDPE PIPE 111'
100B	4+59 - 6+76 LT	312.48	311.58	18" X 214' HDPE PIPE
101	101+56 - 101+33 LT 101+41 - 101+77 LT	312.29 312.16	312.08 311.94	18" X 55' HDPE PIPE 60'
102	101+89 - 101+56 LT 101+98 RT - 101+41 LT	312.50 312.65	312.29 312.16	18" X 56' HDPE PIPE 75'
103	102+89 - 101+89 LT 102+99 - 101+98 RT	312.91 312.84	312.50 312.65	18" X 103' HDPE PIPE 99'
104	101+98 RT - 101+89 LT 101+89 LT - 101+98 RT	312.62 313.49	312.51 313.25	18" X 30' DUCTILE IRON
104A	102+90 - 102+93 LT	EXISTING	312.20	12" X 6' SDR 35 PVC

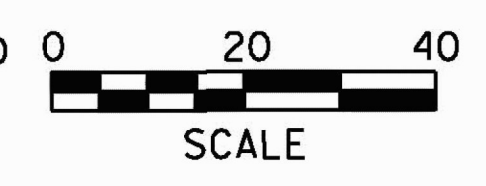
STRUCTURE #	LOCATION	COMMENTS
CB100	101+25.5, 87' LT	CATCH BASIN, TYPE D HINGED GRATE, RIM EL. 317.30
CB100A	100+50.0, 167' LT	CATCH BASIN, TYPE D HINGED GRATE, RIM EL. 317.64
CB100B	100+40.0, 81' RT	CATCH BASIN, TYPE D HINGED GRATE, RIM EL. 317.69
CB101	101+40.0, 31' RT	CATCH BASIN, TYPE D HINGED GRATE, RIM EL. 317.27
CB102	101+89.5, 15' LT	CATCH BASIN, TYPE D HINGED GRATE, RIM EL. 317.25
CB104	101+98.0, 15' RT	CATCH BASIN, TYPE D HINGED GRATE, RIM EL. 317.11

LEGEND

- STORM DRAIN (SHOWING DIRECTION OF FLOW)
- DROP INLET (EXISTING & PROPOSED)
- GRASS CHANNEL (SHOWING DIRECTION OF FLOW)
- INFILTRATION AREA
- SPOT ELEVATION

- NOTES:**
- INSULATION BOARD TO BE PLACED OVER ALL PIPES WITH LESS THAN 4' OF COVER TO TOP OF PIPE. SEE STORMWATER MANAGEMENT DETAIL SWM-4.
 - EXISTING PIPE TO REMAIN IN PLACE. PIPE SHALL BE FILLED WITH FLOWABLE FILL AND ABANDONED. ALL WORK SHALL BE PAID UNDER ITEM 900.608 SPECIAL PROVISION (CONTROLLED DENSITY (FLOWABLE) FILL).
 - EXISTING DRAINAGE STRUCTURE TO REMAIN IN PLACE. STRUCTURE TO BE FILLED, CAPPED AND ABANDONED. ALL WORK SHALL BE PAID UNDER ITEM 900.608 - SPECIAL PROVISION (CONTROLLED DENSITY (FLOWABLE) FILL).
 - REMOVE EXISTING DRAINAGE STRUCTURE (EXDS3) AND REPLACE WITH NEW DRAINAGE STRUCTURE (CB100A). CONNECT CB100A TO EXISTING DRAINAGE PIPE INCIDENTAL TO THE STRUCTURE.
 - EXISTING PIPE BEGINS AT A DRAINAGE INLET IN THE PARKING LOT OF THE APARTMENT BUILDING. THE PIPE SHALL BE CUT AND TIED INTO CB102. PAYMENT SHALL BE INCIDENTAL TO NEW CB. THE 29' OF THE PIPE EXTENDING INTO THE ROADWAY SHALL BE REMOVED.
 - CONTRACTOR SHALL VERIFY INVERT ELEVATIONS OF EXISTING PIPES BEING TIED INTO PROPOSED CATCH BASINS.
 - DROP INLETS AND CATCH BASINS THAT ARE TO BE FILLED AND ABANDONED WILL HAVE ALL ATTACHED PIPE ENDS PLUGGED PRIOR TO POURING FLOWABLE FILL.
 - THE GRATE FROM ANY DRAINAGE STRUCTURE REMOVED OR ABANDONED SHALL BE RETURNED TO THE APPROPRIATE OWNER.
 - UTILITY POLE MAY REQUIRE SUPPORT DURING DRAINAGE PIPE CONSTRUCTION. PAYMENT INCIDENTAL TO PIPE 100B.

REVISION	BY	DATE
ADDENDUM - 1	JBL	01/24/11
DRAINAGE REV. ADDED WATER LINE	JBL	04/22/11



RECORD DRAWING
DATE: DECEMBER 21, 2012

PROJECT NAME: COLCHESTER CAMPUS CONNECTOR	PLOT DATE: 4/22/2011
PROJECT NUMBER: TCSP TCSE (007)	DRAWN BY: PZA
FILE NAME: ...\\plotfiles\075-082.Drn.pxf	DESIGNED BY: TFD
DESIGNED BY: GGG	CHECKED BY: GGG
DRAINAGE PLAN DP-1	SHEET 71 OF 153