

PORTLAND CEMENT CONCRETE SIDEWALK, 5 INCH  
 STA. 92+00, 16.7' RT - STA. 94+24, 12.9' RT

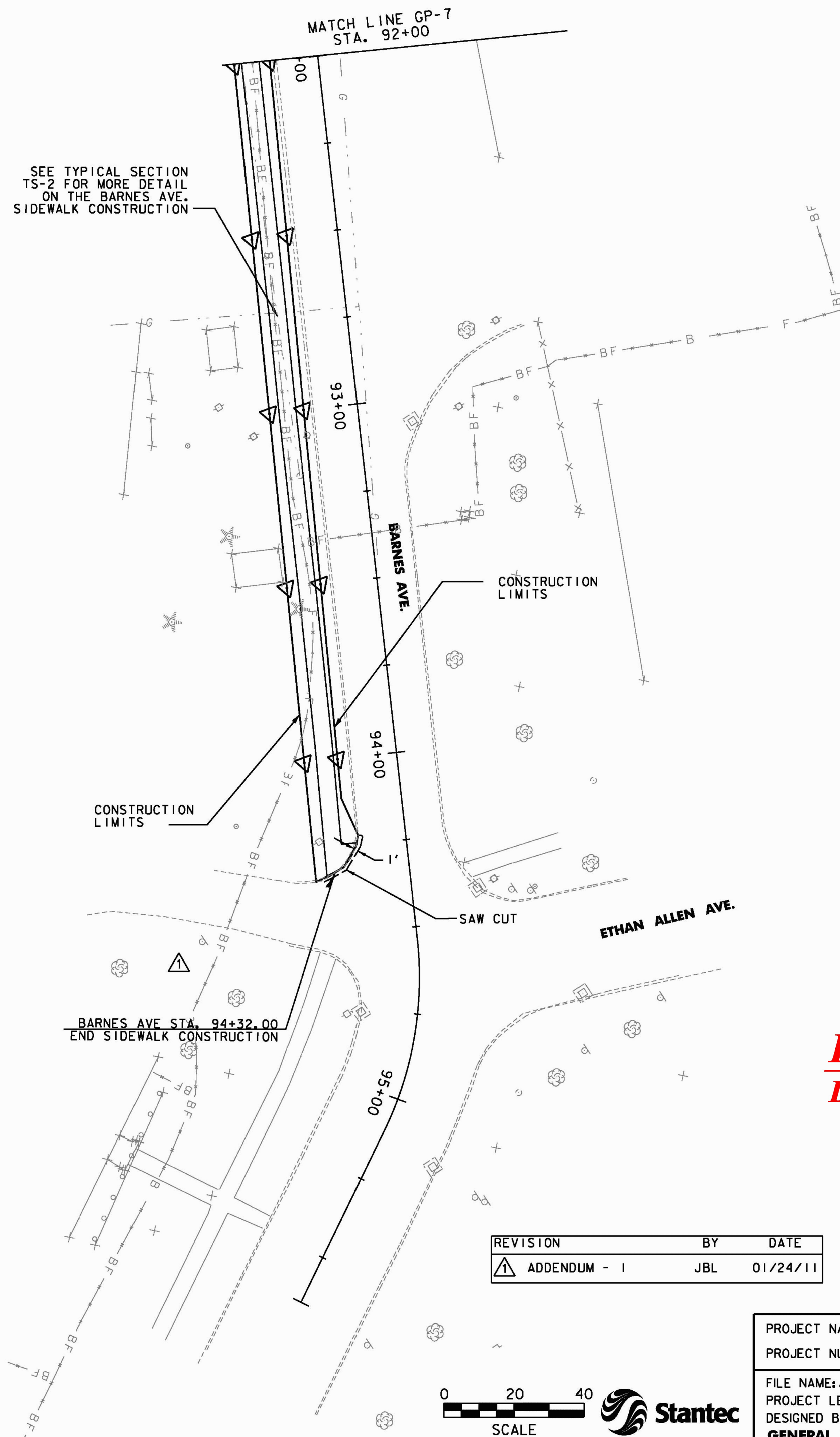
CONSTRUCT SIDEWALK RAMP

CL STATION	OFFSET	TYPE
94+26	20.73' RT	I

REMOVAL OF EXISTING CURB  
 STA. 94+21, 13.7' RT - STA. 94+34, 24.5' RT

CAST-IN-PLACE CONCRETE CURB, TYPE B  
 STA. 94+21, 13.7' RT - STA. 94+34, 24.5' RT

SPECIAL PROVISION (SAW CUTTING SURFACES AND PAVEMENTS)  
 STA. 94+22, 13.0' RT - STA. 94+34, 25.0' RT - 19'

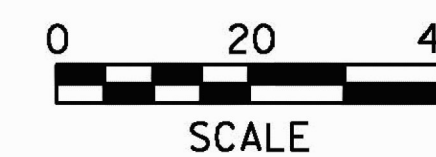


***RECORD DRAWING***  
***DATE: DECEMBER 21, 2012***

NOTES:

1. SIDEWALK RAMPS SHALL BE CONSTRUCTED IN ACCORDANCE WITH VTRANS STANDARDS C-3A AND C-3B.
2. DETECTABLE WARNING SURFACES SHALL BE CONSTRUCTED AT SIDEWALK RAMPS IN ACCORDANCE WITH VTRANS STANDARDS C-3A AND C-3B. DETECTABLE WARNING SURFACES SHALL BE CAST IRON. SEE SIGNING/PVT MARKING PLANS FOR LOCATIONS.

REVISION	BY	DATE
1	JBL	01/24/11



PROJECT NAME:	COLCHESTER CAMPUS CONNECTOR
PROJECT NUMBER:	TCSP TCSE (007)
FILE NAME: ...\plotfiles\058-065.Gen.plt	PLOT DATE: 4/22/2011
PROJECT LEADER: JBL	DRAWN BY: PZA
DESIGNED BY: TFD	CHECKED BY: GGG
<b>GENERAL PLAN GP-8</b>	SHEET 65 OF 153