

PORTLAND CEMENT CONCRETE SIDEWALK, 5 INCH

STA. 33+00, 26.7' RT - STA. 34+71, 48.3' RT
 STA. 106+75, 24.5' LT - STA. 107+72, 24.4' LT
 STA. 107+99, 24.3' LT - STA. 109+25, 26.0' LT
 STA. 109+60, 25.8' LT - STA. 109+75, 25.7' LT
 STA. 110+07, 28.0' LT - STA. 110+24, 32.1' LT

REMOVAL OF EXISTING FENCE

STA. 33+00, 96.0' RT - STA. 111+60, 74.0' LT
 STA. 108+52, 34.0' LT - STA. 108+60, 34.0' RT

SPECIAL PROVISION (SAW CUTTING SURFACES AND PAVEMENTS)

STA. 107+13.5, 25' RT - STA. 107+43.5, 25.0' RT - 22'
 STA. 107+74, 50.0' LT - STA. 107+93, 50.0' LT - 19'
 STA. 107+82, 37.1' RT - STA. 108+01, 32.1' RT - 19'

SPECIAL PROVISION (REMOVE AND RESET BLOCK WALL)

STA. 109+16, 42.5' LT - STA. 109+31, 42.5' LT
 STA. 110+04, 44.6' LT - STA. 110+17, 44.7' LT

REMOVING AND RESETTING FENCE (ORNAMENTAL)

STA. 33+00, 92.9' LT - STA. 108+68, 42.5' LT (REMOVE)
 STA. 108+68, 42.5' LT - STA. 109+16, 42.5' LT (RESET)
 STA. 110+17, 44.7' LT - STA. 111+44, 50.5' LT (RESET)

ADJUST ELEVATION OF VALVE BOX ALIGNMENT

ALIGNMENT	STATION	OFFSET
MAINLINE	108+37.6	4.8' LT
	108+37.8	9.3' LT
	108+40.6	3.0' LT
	107+40.6	11.0' LT

CAST-IN-PLACE CONCRETE CURB, TYPE B

STA. 106+75, 14.6' RT - STA. 107+26, 18.0' RT
 STA. 106+75, 18.3' LT - STA. 107+73, 29.4' LT
 STA. 107+54, 17.3' RT - STA. 107+80, 18.7' RT
 STA. 107+98, 29.3' LT - STA. 109+31, 41.7' LT
 STA. 108+01, 19.3' RT - STA. 109+42, 51.1' RT
 STA. 109+62, 48.0' LT - STA. 109+77, 48.0' LT

SPECIAL PROVISION (SLIDE GATE)

STA. 109+24, 52.0' LT - STA. 109+62, 52.0' LT
 STA. 109+77, 52.0' LT - STA. 110+11, 52.5' LT

BITUMINOUS CONCRETE SIDEWALK LOCATION WIDTH

STA. 110+24, 28.0' LT - STA. 112+75, 28.0' LT 8'

CONSTRUCT SIDEWALK RAMP

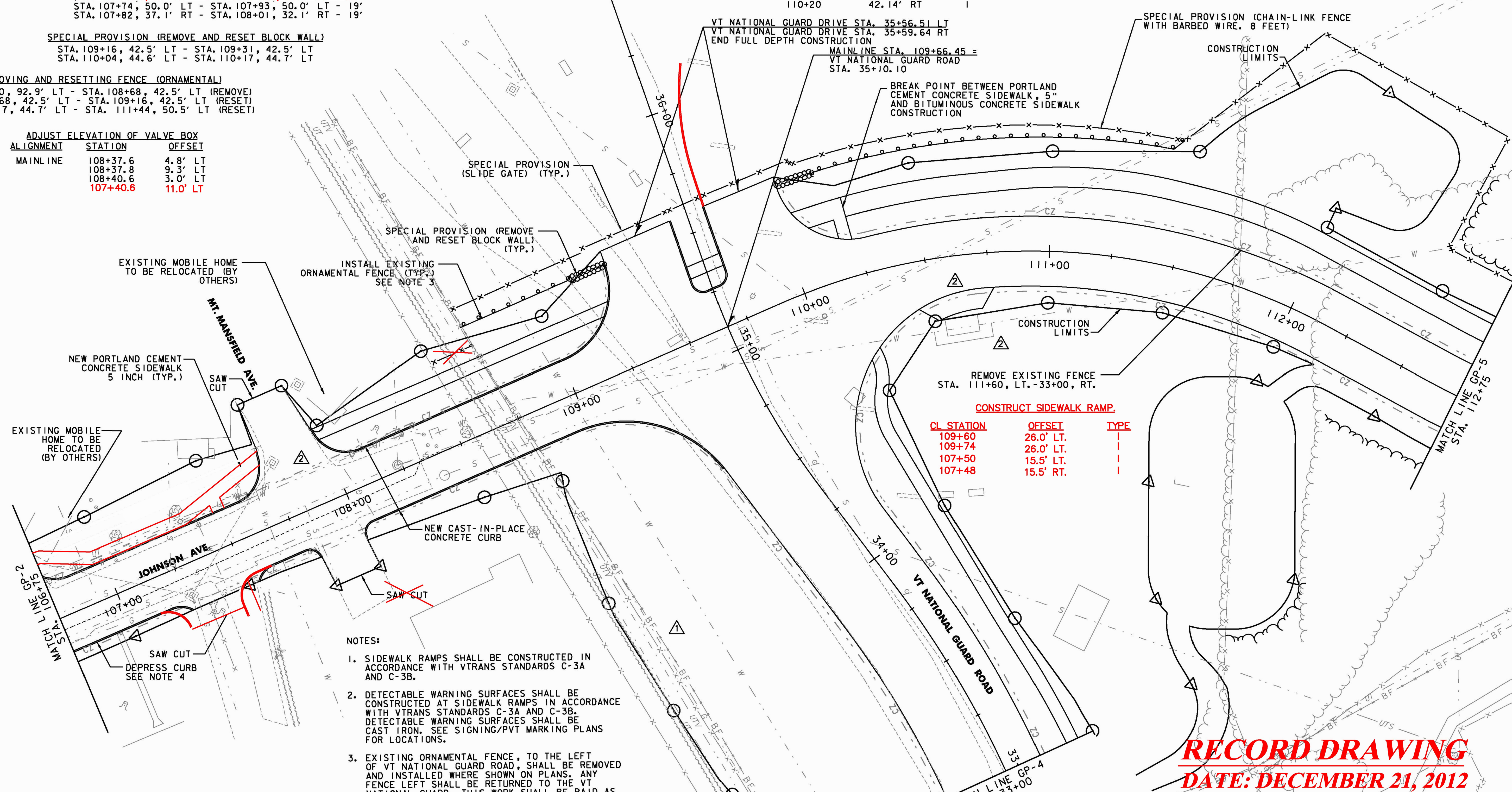
CL STATION	OFFSET	TYPE
107+72	26.00' LT	
107+98	26.00' LT	
109+22	26.00' LT	
110+14	28.00' LT	
110+20	14.00' LT	
110+20	42.14' RT	

CONSTRUCT DRIVES

CL STATION	WIDTH	TYPE
107+91, RT	19.4	RESIDENTIAL
107+33.5, RT	22.0	BITUMINOUS, COMMERCIAL
STA. 106+95, 14.9' RT		SOLID ROCK EXCAVATION
STA. 106+95, 14.9' RT		STA. 106+95, 18.6' RT

SPECIAL PROVISION (CHAIN LINK-FENCE WITH BARBED WIRE, 8 FEET)

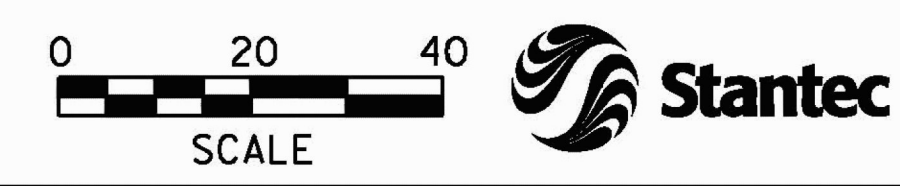
STA. 108+52, 34.0' LT - STA. 108+69, 34.0' LT
 STA. 108+67, 50.5' LT - STA. 109+24, 52.0' LT
 STA. 109+62, 52.0' LT - STA. 109+77, 52.0' LT
 STA. 110+11, 52.5' LT - STA. 112+75, 50.5' LT



NOTES:

- SIDEWALK RAMPS SHALL BE CONSTRUCTED IN ACCORDANCE WITH VTRANS STANDARDS C-3A AND C-3B.
- DETECTABLE WARNING SURFACES SHALL BE CONSTRUCTED AT SIDEWALK RAMPS IN ACCORDANCE WITH VTRANS STANDARDS C-3A AND C-3B. DETECTABLE WARNING SURFACES SHALL BE CAST IRON. SEE SIGNING/PVT MARKING PLANS FOR LOCATIONS.
- EXISTING ORNAMENTAL FENCE, TO THE LEFT OF VT NATIONAL GUARD ROAD, SHALL BE REMOVED AND INSTALLED WHERE SHOWN ON PLANS. ANY FENCE LEFT SHALL BE RETURNED TO THE VT NATIONAL GUARD. THIS WORK SHALL BE PAID AS ITEM 620.5001 - REMOVING AND RESETTING FENCE (ORNAMENTAL). THE REMOVAL OF THE FENCE SHALL BE INCIDENTAL TO THE ITEM, PAYMENT SHALL BE MADE FOR THE TOTAL LENGTH RESET.
- DEPRESS CURB FOR HOUSE ACCESS, STA. 106+40 TO STA. 107+04 RT. SEE DEPRESSED CURB DETAIL ON TYPICAL SECTION TS-3.

REVISION	BY	DATE
ADDENDUM - 1	JBL	01/24/11
ADDED WATER LINE UTILITY ACCESS METER VAULT	JBL	04/22/11



RECORD DRAWING
DATE: DECEMBER 21, 2012

PROJECT NAME:	COLCHESTER CAMPUS CONNECTOR
PROJECT NUMBER:	TCSP TCSE (007)
FILE NAME:	...plotfiles\058-065_Gen.prf
DESIGNED BY:	TFD
CHECKED BY:	GGG
GENERAL PLAN	GP-3
PLOT DATE:	4/22/2011
DRAWN BY:	PZA
CHECKED BY:	GGG
SHEET	60 OF 153