

**PORTLAND CEMENT CONCRETE SIDEWALK, 5 INCH**  
 STA. 102+25, 16.5' LT - STA. 102+90, 16.5' LT  
 STA. 103+36, 16.5' LT - STA. 105+00, 24.9' LT  
 STA. 105+22, 25.1' LT - STA. 106+47, 23.8' LT  
 STA. 106+71, 24.4' LT - STA. 106+75, 24.5' LT

**SOLID ROCK EXCAVATION (REMOVAL OF EX. SIDEWALK)**  
 STA. 103+67, 15.0 RT - STA. 103+75, 6.3' RT  
 STA. 105+94, 13.6' RT - STA. 105+94, 19.1' RT  
 STA. 106+74, 15.3' RT - STA. 106+74, 18.7' RT  
**STA. 103+25, 14.5' RT - STA. 103+59, 39.6' RT,**

**PORTLAND CEMENT CONCRETE SIDEWALK, 8 INCH**  
 STA. 105+00, 24.9' LT - STA. 105+22, 25.1' LT  
**STA. 104+52.5, 24.0' LT - STA. 104+76.5, 24.4' LT,**  
**REMOVAL OF EXISTING CURB**  
 STA. 102+47, 9.2' RT - STA. 102+50, 38.0' RT  
 STA. 103+02, 38.0' RT - STA. 104+33, 15.1' RT  
 STA. 7+00, 40.3' LT - STA. 7+04, 40.3' LT

**ADJUST ELEVATION OF VALVE BOX**

ALIGNMENT	STATION	OFFSET
MAINLINE	102+95.8	14.4' LT
	103+58.7	10.9' LT

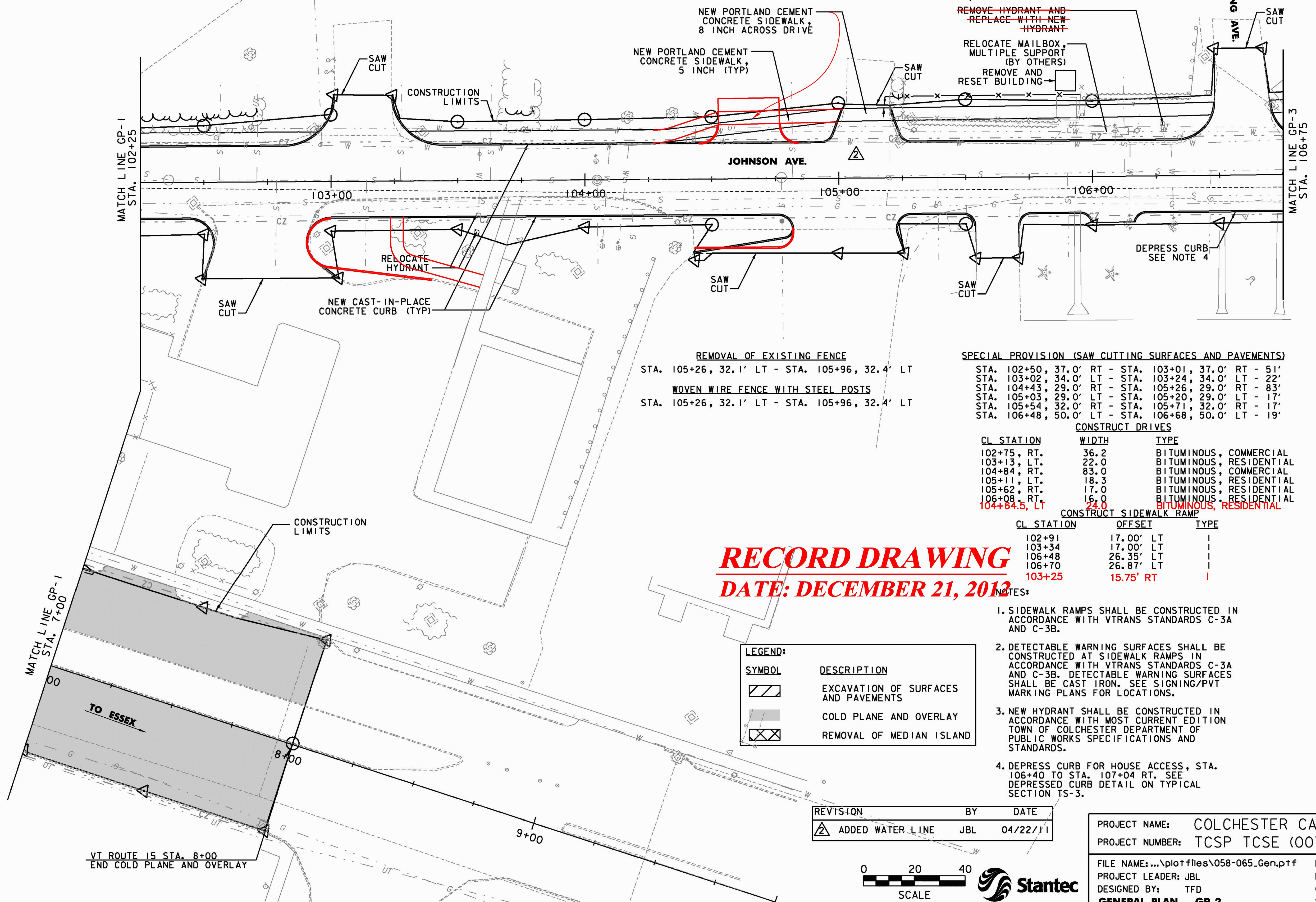
**CAST-IN-PLACE CONCRETE CURB, TYPE B**  
 STA. 102+25, 14.0' LT - STA. 103+01, 34.1' LT  
 STA. 102+25, 14.0' RT - STA. 102+50, 37.4' RT  
**STA. 103+40, 39.0' RT - STA. 104+43, 28.6' RT**  
 STA. 103+25, 33.8' LT - STA. 105+01, 24.7' LT  
 STA. 105+21, 27.6' LT - STA. 106+48, 29.8' LT  
 STA. 105+26, 28.7' RT - STA. 105+53, 19.2' RT  
 STA. 105+71, 19.1' RT - STA. 106+00, 18.1' RT  
 STA. 106+16, 18.1' RT - STA. 106+75, 14.0' RT  
 STA. 106+71, 29.4' LT - STA. 106+75, 18.3' LT

**SPECIAL PROVISION (REMOVE AND RESET BUILDING)**  
 STA. 105+90, 38' LT.

~~NEW HYDRANT~~  
 STA. 106+28, 20' LT

~~RELOCATE HYDRANT~~  
 STA. 103+57, 13.3' RT

~~RELOCATE HYDRANT~~  
 STA. 106+28, 20' LT



**REMOVAL OF EXISTING FENCE**  
 STA. 105+26, 32.1' LT - STA. 105+96, 32.4' LT

**WOVEN WIRE FENCE WITH STEEL POSTS**  
 STA. 105+26, 32.1' LT - STA. 105+96, 32.4' LT

**SPECIAL PROVISION (SAW CUTTING SURFACES AND PAVEMENTS)**  
 STA. 102+50, 37.0' RT - STA. 103+01, 37.0' RT - 51'  
 STA. 103+02, 34.0' LT - STA. 103+24, 34.0' LT - 22'  
 STA. 104+43, 29.0' RT - STA. 105+26, 29.0' RT - 83'  
 STA. 105+03, 29.0' LT - STA. 105+20, 29.0' LT - 17'  
 STA. 105+54, 32.0' RT - STA. 105+71, 32.0' RT - 17'  
 STA. 106+48, 50.0' LT - STA. 106+68, 50.0' LT - 19'

**CONSTRUCT DRIVES**

CL STATION	WIDTH	TYPE
102+75, RT.	36.2	BITUMINOUS, COMMERCIAL
103+13, LT.	22.0	BITUMINOUS, RESIDENTIAL
104+84, RT.	83.0	BITUMINOUS, COMMERCIAL
105+11, LT.	18.3	BITUMINOUS, RESIDENTIAL
105+62, RT.	17.0	BITUMINOUS, RESIDENTIAL
106+08, RT.	16.0	BITUMINOUS, RESIDENTIAL
104+64.5, LT	24.0	BITUMINOUS, RESIDENTIAL

**CONSTRUCT SIDEWALK RAMP**

CL STATION	OFFSET	TYPE
102+91	17.00' LT	I
103+34	17.00' LT	I
106+48	26.35' LT	I
106+70	26.87' LT	I
103+25	15.75' RT	I

**RECORD DRAWING**  
**DATE: DECEMBER 21, 2012**

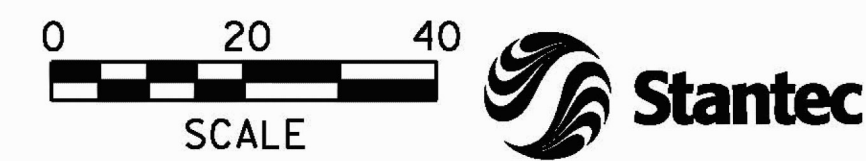
**LEGEND:**

SYMBOL	DESCRIPTION
	EXCAVATION OF SURFACES AND PAVEMENTS
	COLD PLANE AND OVERLAY
	REMOVAL OF MEDIAN ISLAND

- NOTES:**
- SIDEWALK RAMPS SHALL BE CONSTRUCTED IN ACCORDANCE WITH VTRANS STANDARDS C-3A AND C-3B.
  - DETECTABLE WARNING SURFACES SHALL BE CONSTRUCTED AT SIDEWALK RAMPS IN ACCORDANCE WITH VTRANS STANDARDS C-3A AND C-3B. DETECTABLE WARNING SURFACES SHALL BE CAST IRON. SEE SIGNING/PVT MARKING PLANS FOR LOCATIONS.
  - NEW HYDRANT SHALL BE CONSTRUCTED IN ACCORDANCE WITH MOST CURRENT EDITION TOWN OF COLCHESTER DEPARTMENT OF PUBLIC WORKS SPECIFICATIONS AND STANDARDS.
  - DEPRESS CURB FOR HOUSE ACCESS, STA. 106+40 TO STA. 107+04 RT. SEE DEPRESSED CURB DETAIL ON TYPICAL SECTION TS-3.

**REVISION**

REVISION	BY	DATE
	ADDED WATER LINE	JBL 04/22/11



**PROJECT NAME:** COLCHESTER CAMPUS CONNECTOR  
**PROJECT NUMBER:** TCSP TCSE (007)

**FILE NAME:** ...\plotfiles\058-065\_Gen.plt **PLOT DATE:** 4/22/2011  
**PROJECT LEADER:** JBL **DRAWN BY:** PZA  
**DESIGNED BY:** TFD **CHECKED BY:** GGG  
**GENERAL PLAN GP-2** **SHEET 59 OF 153**

