

LIGHTING CONSTRUCTION

SPECIFIC FEATURES OF THE LIGHTING DESIGN WILL BE CONSTRUCTED AT THE DISCRETION OF THE CITY. THE CONTRACTOR SHALL INSTALL THE DECORATIVE LIGHTS ACCORDING TO THE DETAILS PROVIDED IN THIS PLAN SET AND THE SPECIAL PROVISIONS. ALL LIGHT POLE BASES AND LIGHTS WILL BE INSTALLED THAT ARE REFERENCED IN THE GATEWAY DECORATIVE LIGHTING COLUMN.

IF REQUIRED BY THE CITY, THE CONTRACTOR WILL NOT INSTALL THE DECORATIVE LIGHTS BUT WILL INSTALL ONLY THE LIGHTS REFERENCED IN THE COBRA STYLE LIGHTING COLUMN. THIS WILL INCLUDE THE INSTALLATION OF A NEW LIGHT POLE BASE, BREAKAWAY FEATURE, 25' BLACK TAPERED ALUMINUM POLE, 6' BRACKET ARM AND LED COBRA STYLE LUMINAIRE. REFER TO LGT-03 AND VTRANS STANDARD E-180A AND E-180B FOR DETAILS. ALL ITEMS ASSOCIATED WITH THE INSTALLATION OF THESE LIGHTS WILL BE PAID UNDER SPECIFIC 679 CONTRACT ITEMS. THE WIRING OF THE LIGHTS SHALL BE CONSIDERED INCIDENTAL TO CONTRACT ITEMS.

ALL OTHER LIGHTS SHOWN ON THIS PLAN, AT THE DISCRETION OF THE CITY, MAY BE ELIMINATED FROM THE PROJECT.

SPECIAL PROVISION
(ADJUST ELEVATION OF PULL BOX)
STA. 731+63, LT

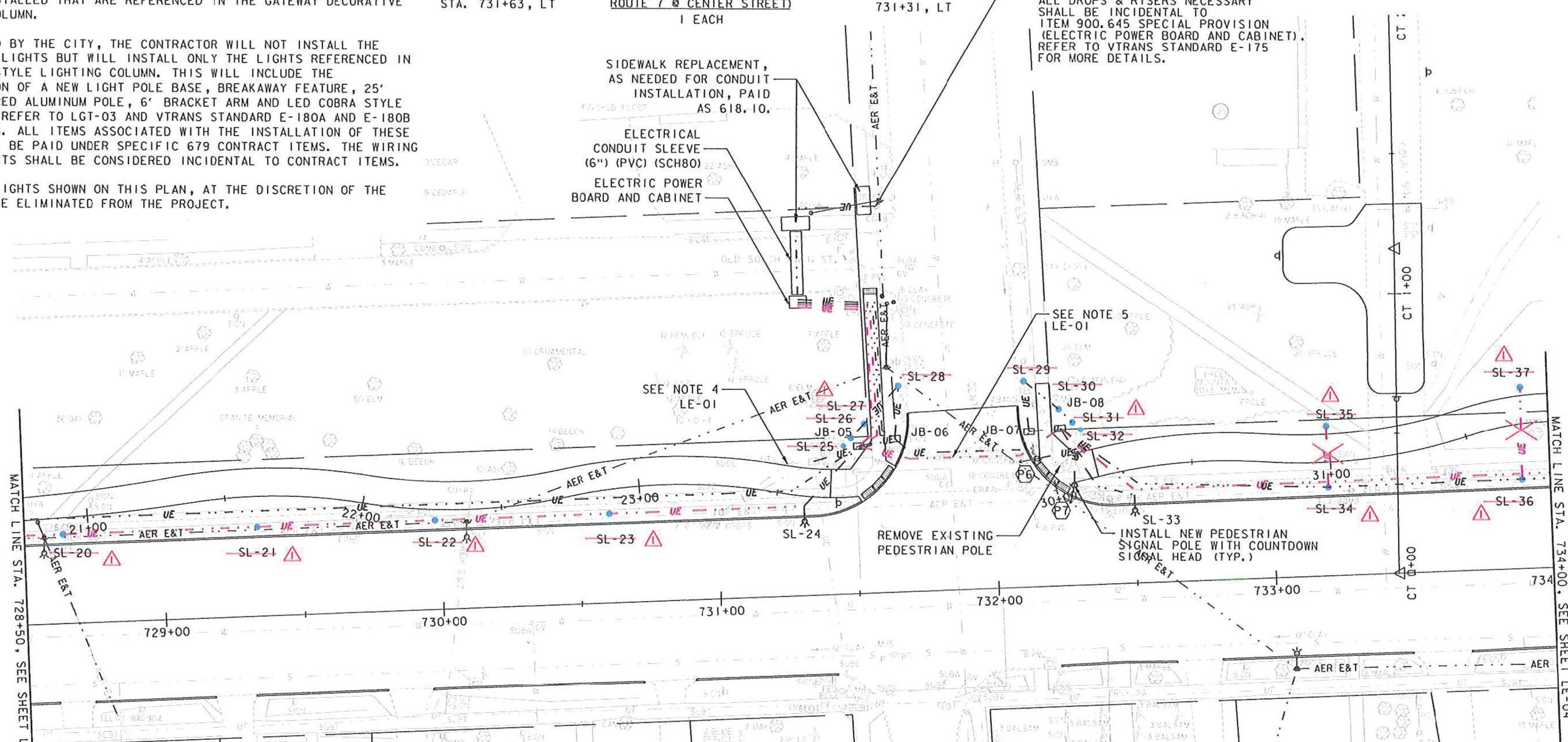
SPECIAL PROVISION (MODIFY EXISTING PEDESTRIAN SIGNAL SYSTEM, INTERSECTION) (US ROUTE 7 @ CENTER STREET)
1 EACH

SPECIAL PROVISION (ELECTRIC POWER BOARD AND CABINET)
731+31, LT

NEW POLE INSTALLED BY GMP. CONTRACTOR WILL BE RESPONSIBLE FOR SUPPLYING POWER TO THE PROPOSED SYSTEM AS SHOWN. ALL DROPS & RISERS NECESSARY SHALL BE INCIDENTAL TO ITEM 900.645 SPECIAL PROVISION (ELECTRIC POWER BOARD AND CABINET). REFER TO VTRANS STANDARD E-175 FOR MORE DETAILS.

SIDEWALK REPLACEMENT, AS NEEDED FOR CONDUIT INSTALLATION, PAID AS 618.10.

ELECTRICAL CONDUIT SLEEVE (6") (PVC) (SCH80)
ELECTRIC POWER BOARD AND CABINET



MATCH LINE STA. 728+50, SEE SHEET LE-02

MATCH LINE STA. 734+00, SEE SHEET LE-04

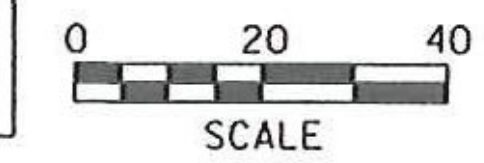
STREET LIGHTING SCHEDULE					
STREET LIGHT NO.	LOCATION	OFFSET	FIXTURE TYPE	GATEWAY DECORATIVE LIGHTING	COBRA STYLE LIGHTING
SL-20	728+64	32' LT	A		
SL-21	729+34	32' LT	A		
SL-22	729+98	32' LT	A		
SL-23	730+61	32' LT	A		
SL-24	731+31	32' LT	A	SEE NOTE 2, LE-04	
SL-25	731+46	53' LT	D	*	
SL-26	731+49	56' LT	B	*	
JB-05	731+51	53' LT	JB		*
SL-27	731+54	61' LT	A	*	*
JB-06	731+65	55' LT	JB		
SL-28	731+67	74' LT	C		
SL-29	732+12	74' LT	C		

STREET LIGHTING SCHEDULE					
STREET LIGHT NO.	LOCATION	OFFSET	FIXTURE TYPE	GATEWAY DECORATIVE LIGHTING	COBRA STYLE LIGHTING
JB-07	732+13	56' LT	JB		
SL-30	732+24	63' LT	A	*	*
JB-08	732+24	56' LT	JB		
SL-31	732+29	58' LT	B	*	
SL-32	732+32	56' LT	D		
SL-33	732+50	32' LT	A	SEE NOTE 2, LE-04	
SL-34	733+20	32' LT	A		
SL-35	733+20	54' LT	A		
SL-36	733+90	32' LT	A		
SL-37	733+90	65' LT	A		

REVISION	BY	DATE
CONDUIT AND LIGHTING REMOVED FROM CONTRACT	TFD	11/05/13

- REVISION LEGEND**
- = STREET LIGHT TO BE REMOVED FROM THE CONTRACT
 - ~~---~~ = WIRED CONDUIT TO BE REMOVED FROM THE CONTRACT
 - ⚡ = STREET LIGHTS TO BE INSTALLED

NOTE:
I. FOR LIGHTING AND ELECTRICAL



PROJECT NAME: **RUTLAND CITY**
PROJECT NUMBER: **STP 019-3(57)**
FILE NAME: ...rut.light.dgn
PROJECT LEADER: GAE
DESIGNED BY: TFD
LIGHTING & ELECTRICAL PLAN LE-03

PLOT DATE: 11/5/2013
DRAWN BY: PZA
CHECKED BY: GAE
SHEET 358AOF 392