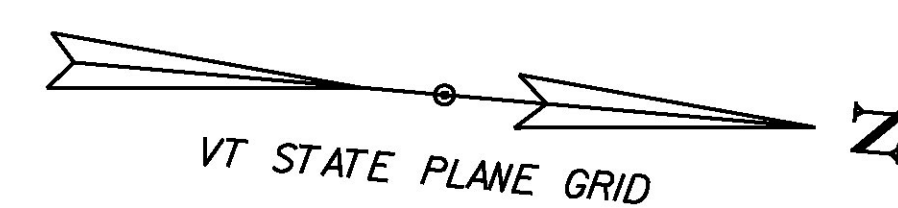
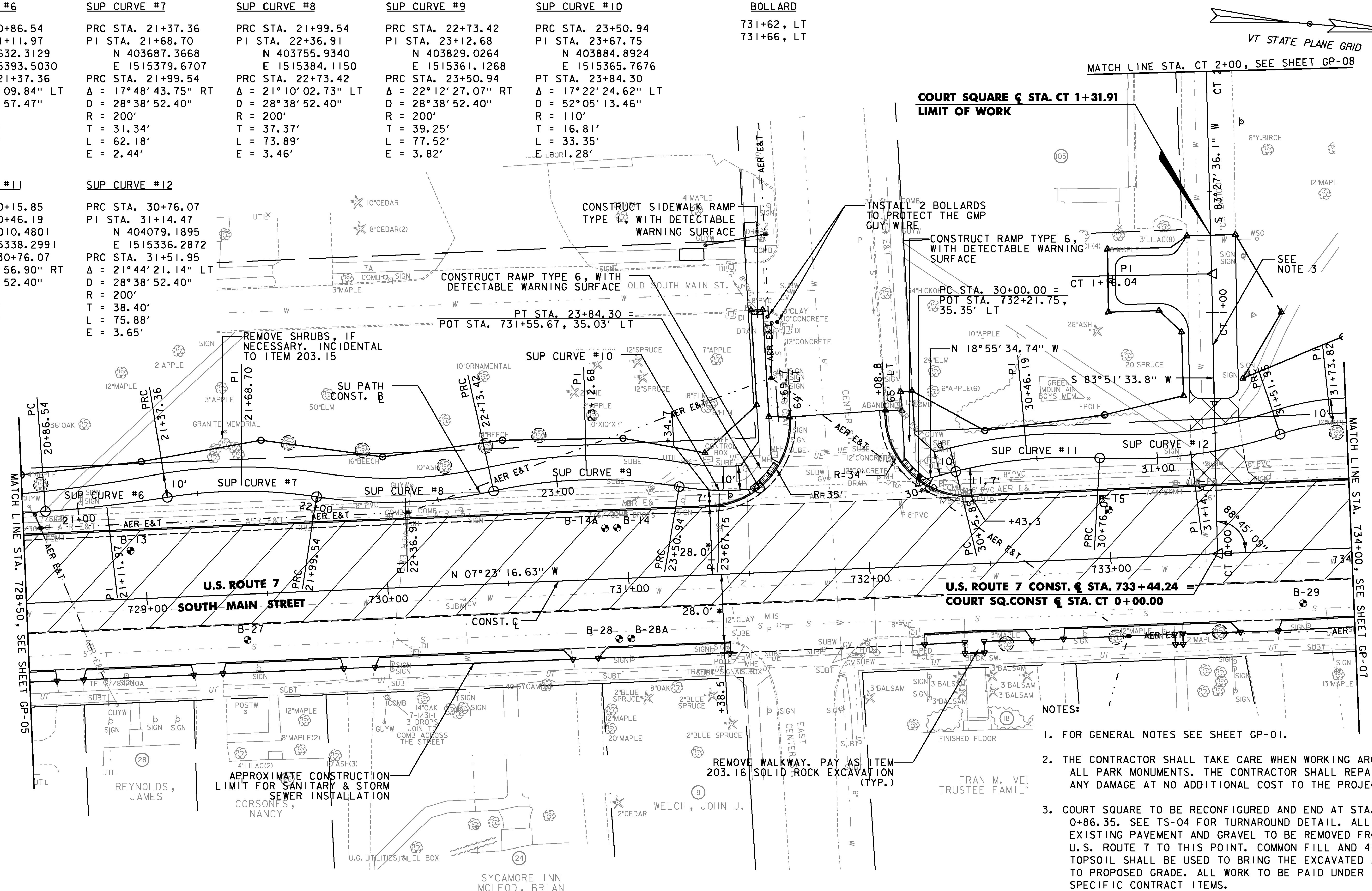


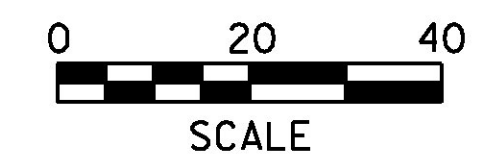
SUP CURVE #6	SUP CURVE #7	SUP CURVE #8	SUP CURVE #9	SUP CURVE #10	BOLLARD
PC STA. 20+86.54	PRC STA. 21+37.36	PRC STA. 21+99.54	PRC STA. 22+73.42	PRC STA. 23+50.94	731+62, LT
PI STA. 21+11.97	PI STA. 21+68.70	PI STA. 22+36.91	PI STA. 23+12.68	PI STA. 23+67.75	731+66, LT
N 403632.3129	N 403687.3668	N 403755.9340	N 403829.0264	N 403884.8924	
E 1515393.5030	E 1515379.6707	E 1515384.1150	E 1515361.1268	E 1515365.7676	
PRC STA. 21+37.36	PRC STA. 21+99.54	PRC STA. 22+73.42	PRC STA. 23+50.94	PT STA. 23+84.30	
$\Delta = 04^{\circ}51'09.84''$ LT	$\Delta = 17^{\circ}48'43.75''$ RT	$\Delta = 21^{\circ}10'02.73''$ LT	$\Delta = 22^{\circ}12'27.07''$ RT	$\Delta = 17^{\circ}22'24.62''$ LT	
D = $09^{\circ}32'57.47''$	D = $28^{\circ}38'52.40''$	D = $28^{\circ}38'52.40''$	D = $28^{\circ}38'52.40''$	D = $52^{\circ}05'13.46''$	
R = 600'	R = 200'	R = 200'	R = 200'	R = 110'	
T = 25.42'	T = 31.34'	T = 37.37'	T = 39.25'	T = 16.81'	
L = 50.82'	L = 62.18'	L = 73.89'	L = 77.52'	L = 33.35'	
E = 0.54'	E = 2.44'	E = 3.46'	E = 3.82'	E = 0.28'	

SUP CURVE #11	SUP CURVE #12
PC STA. 30+15.85	PRC STA. 30+76.07
PI STA. 30+46.19	PI STA. 31+14.47
N 404010.4801	N 404079.1895
E 1515338.2991	E 1515336.2872
PRC STA. 30+76.07	PRC STA. 31+51.95
$\Delta = 17^{\circ}14'56.90''$ RT	$\Delta = 21^{\circ}44'21.14''$ LT
D = $28^{\circ}38'52.40''$	D = $28^{\circ}38'52.40''$
R = 200'	R = 200'
T = 30.33'	T = 38.40'
L = 60.21'	L = 75.88'
E = 2.29'	E = 3.65'



- NOTES:
- FOR GENERAL NOTES SEE SHEET GP-01.
 - THE CONTRACTOR SHALL TAKE CARE WHEN WORKING AROUND ALL PARK MONUMENTS. THE CONTRACTOR SHALL REPAIR ANY DAMAGE AT NO ADDITIONAL COST TO THE PROJECT.
 - COURT SQUARE TO BE RECONFIGURED AND END AT STA. 0+86.35. SEE TS-04 FOR TURNAROUND DETAIL. ALL EXISTING PAVEMENT AND GRAVEL TO BE REMOVED FROM U.S. ROUTE 7 TO THIS POINT. COMMON FILL AND 4" OF TOPSOIL SHALL BE USED TO BRING THE EXCAVATED AREA TO PROPOSED GRADE. ALL WORK TO BE PAID UNDER SPECIFIC CONTRACT ITEMS.

PROJECT NAME:	RUTLAND CITY
PROJECT NUMBER:	STP 019-3(57)
FILE NAME:	... \PlotFiles\rut_genplan.dgn
PROJECT LEADER:	GAE
DESIGNED BY:	TFD
GENERAL PLAN	GP-06
PLOT DATE:	7/12/2013
DRAWN BY:	PZA
CHECKED BY:	GAE
SHEET	291 OF 392



SYCAMORE INN
MCLEOD, BRIAN
MCLEOD, JULIANNE
COLBERT, ROSANNE
DOUGLASS, TINA L.
THOMPSON, KEVIN R.
THOMPSON, HOLLY A.
KIRKMAN, JACKIE
HERLTHY, JULIE M.