

GPS CONTROL POINTS

RUT 9 TERRILL

PID AE6537
 N = 404405.55
 E = 1515369.33
 ELEV. = 641.81

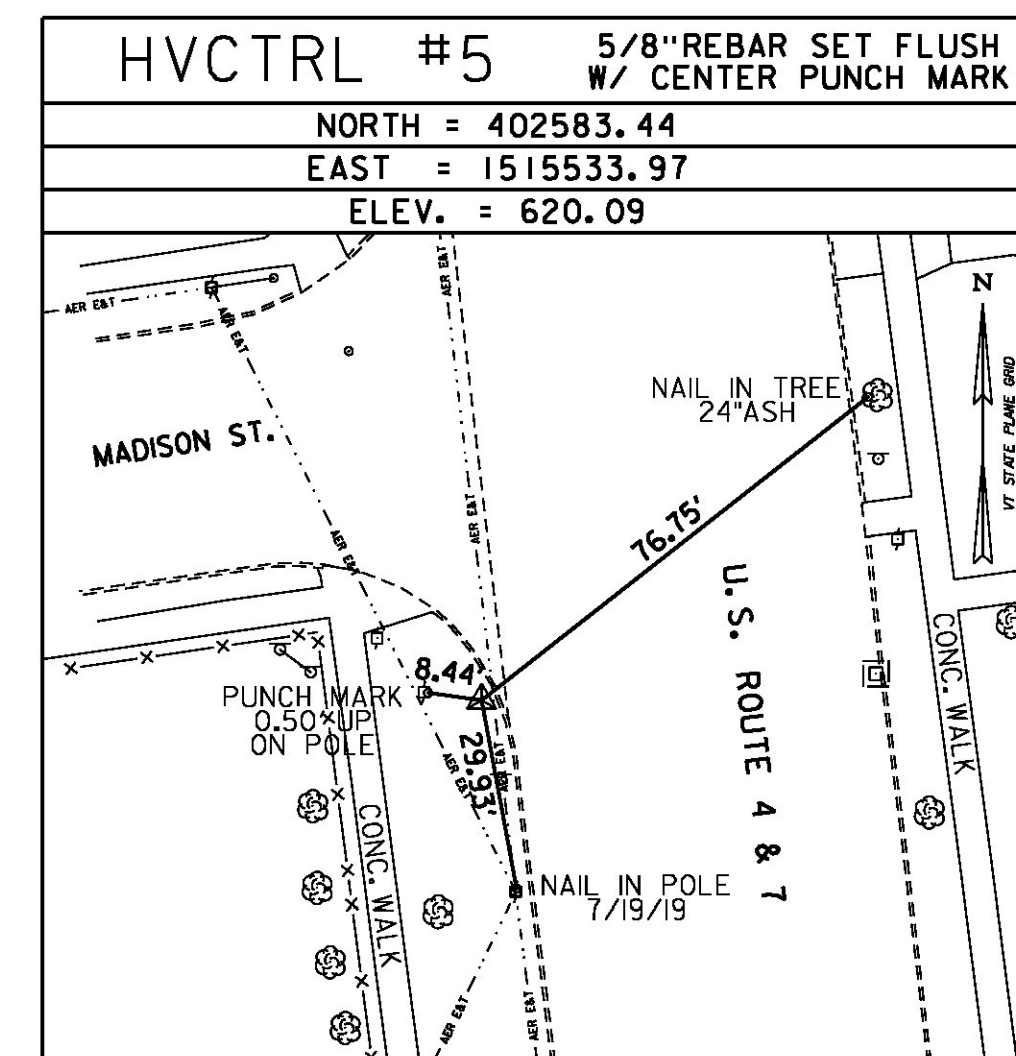
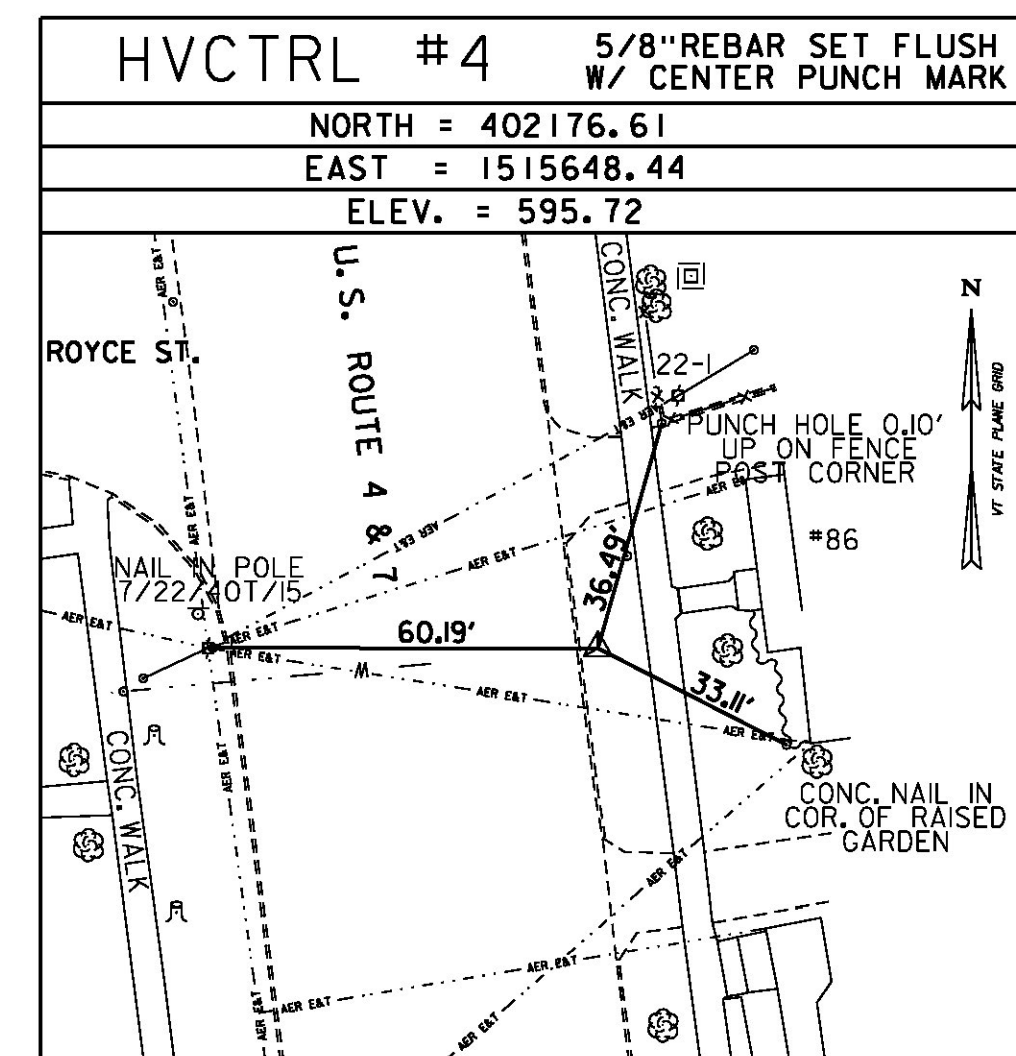
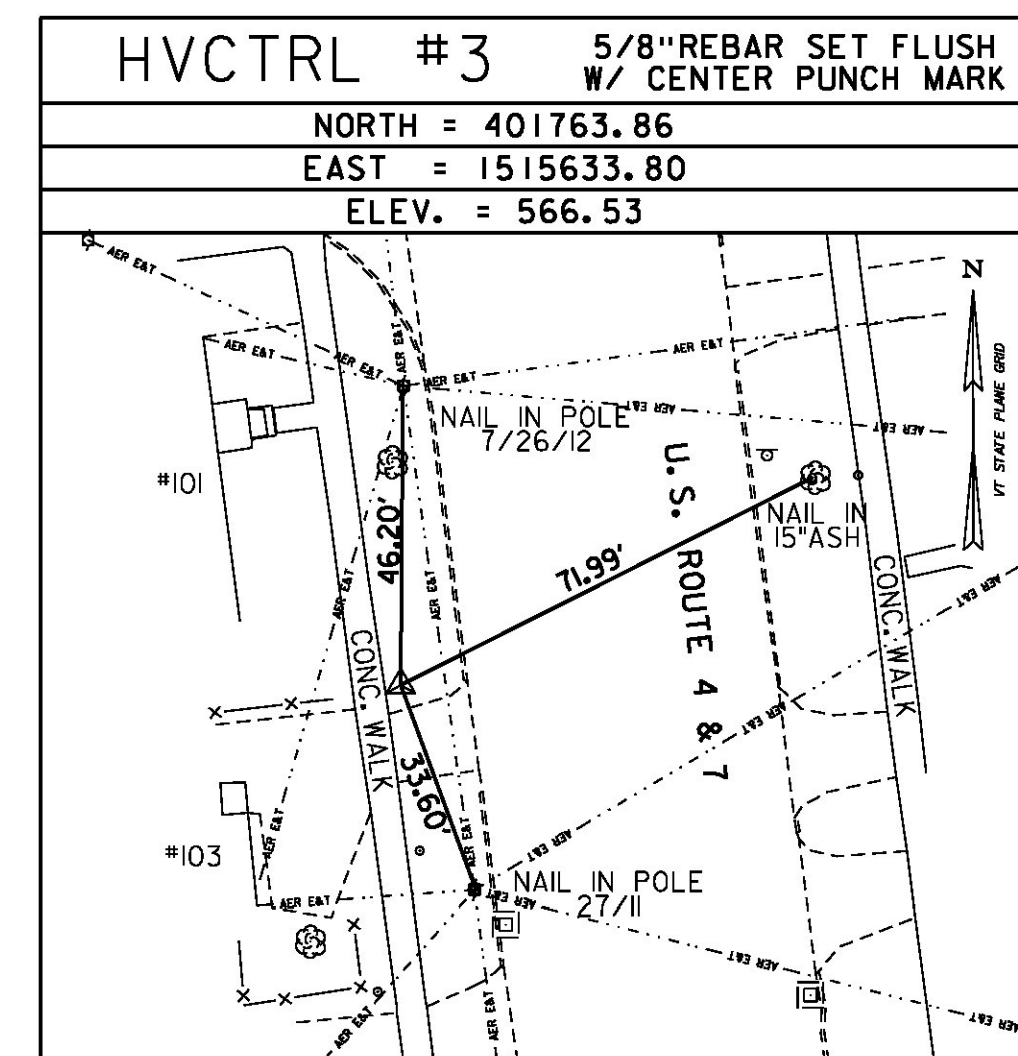
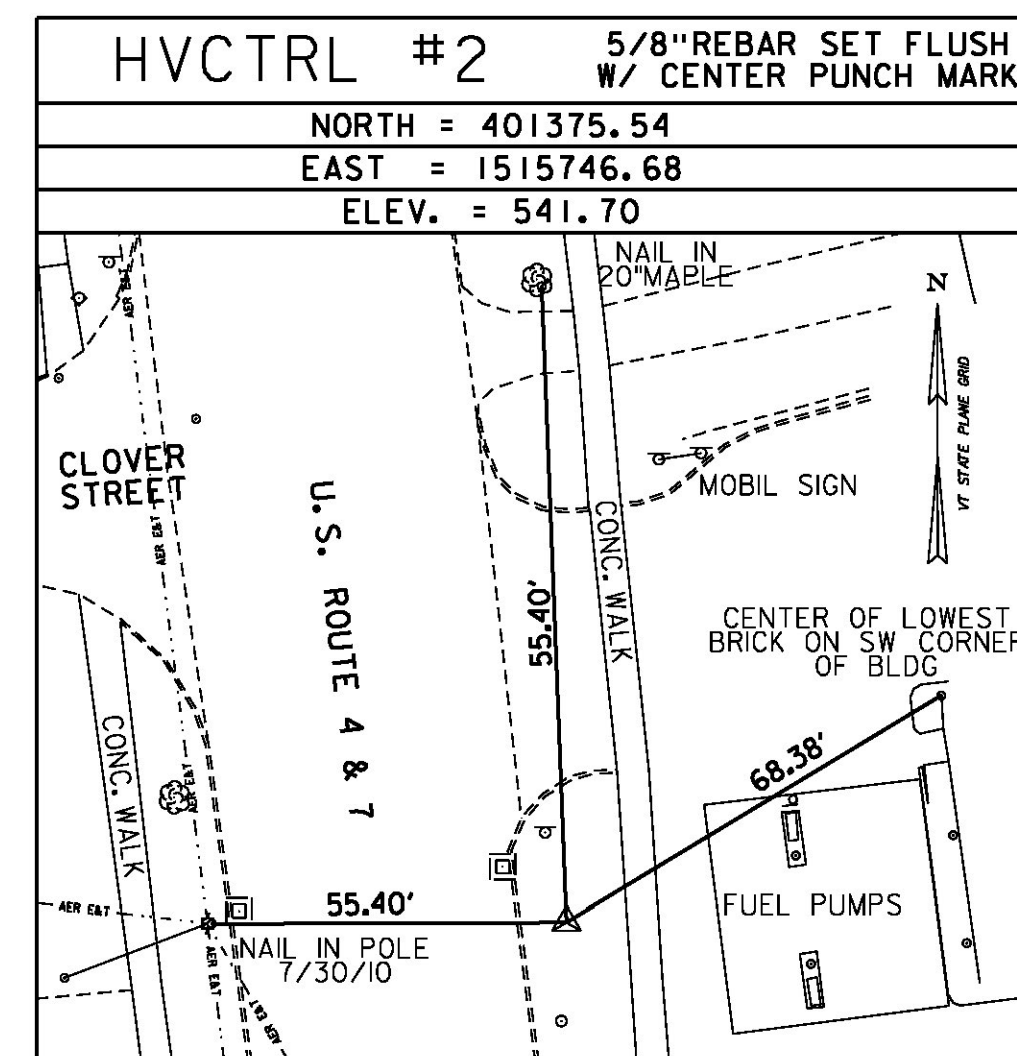
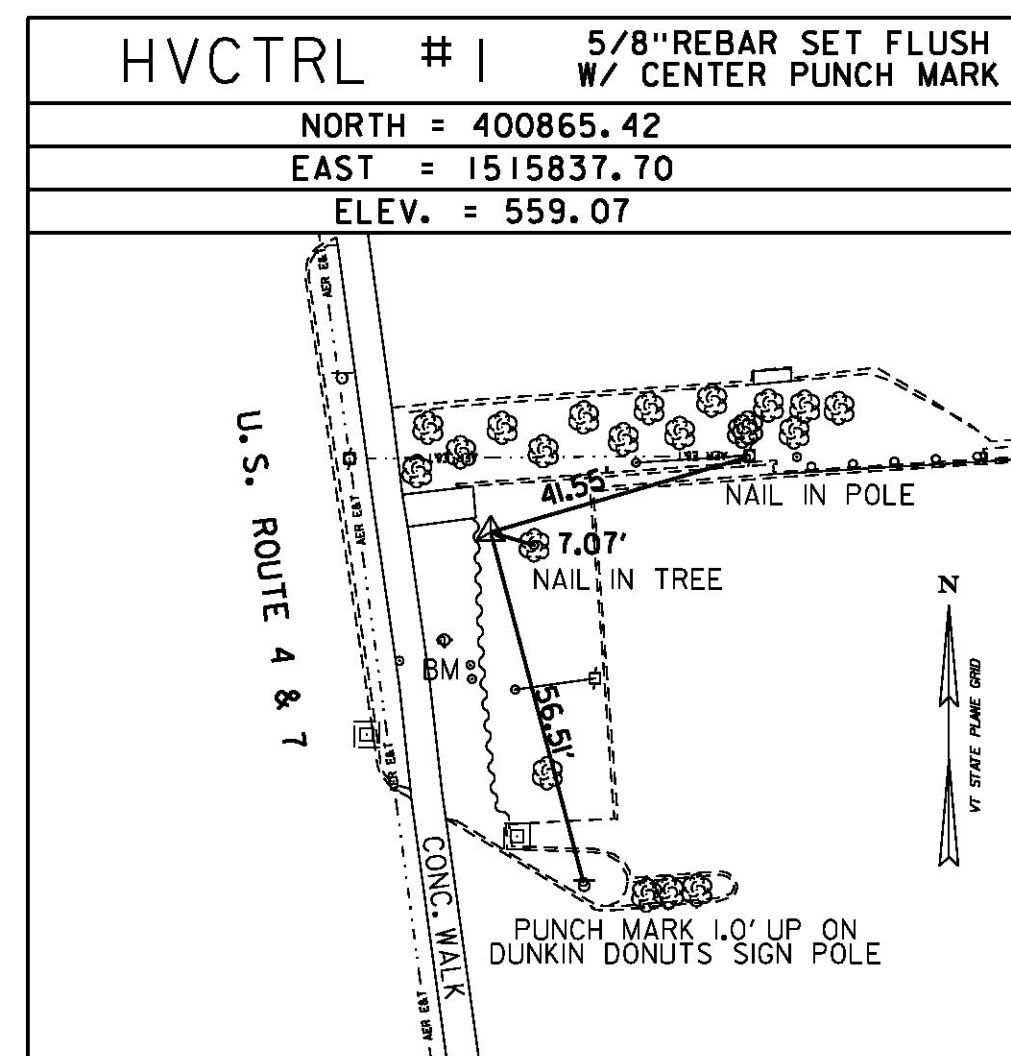
DESCRIBED BY VERMONT GEODETIC SURVEY 1997, GENERAL LOCATION, RUTLAND CITY, TO REACH FROM THE JUNCTION OF US ROUTE 7 AND US ROUTE 4 EAST (WOODSTOCK AVENUE), PROCEED SOUTH ON ROUTE 7 FOR 0.15 MI (0.24 KM) TO ITS INTERSECTION WITH TERRILL STREET AND WEST STREET. THE STATION IS ON THE LEFT IN THE SOUTHEAST QUADRANT OF THE INTERSECTION IN FRONT OF LINDHOLMS SPORTS. THE STATION MARK IS A STATE OF VERMONT DISK SET IN THE TOP OF A 1 FT (0.3 M) DIAMETER CONCRETE MONUMENT, SET IN THE MIDDLE OF, AND FLUSH WITH A CONCRETE SIDEWALK. THE MARK IS LOCATED 39 FT (11.9 M) SOUTH OF THE CENTERLINE OF TERRILL STREET, 14.5 FT (4.4 M) SOUTHWEST OF UTILITY POLE NUMBER 1, 9.4 FT (2.9 M) EAST OF THE CURB OF U.S. ROUTE 7, 97.1 FT (29.6 M) SOUTH OF THE CENTERLINE OF BURNHAM AVENUE, 36.7 FT (11.2 M) EAST OF THE SOUTHEAST CORNER OF THE LEGAL AID/ALLSTATE BUILDING, 37.4 FT (11.4 M) NORTHEAST OF THE NORTHEAST PORCH CORNER OF HOUSE NO.55, AND 9.8 FT (3.0 M) EAST OF THE EAST EDGE OF THE CONCRETE SIDEWALK.

RUT 17 ENGREM

PID AE6532
 N = 402509.73
 E = 1515610.01
 ELEV. = 615.97

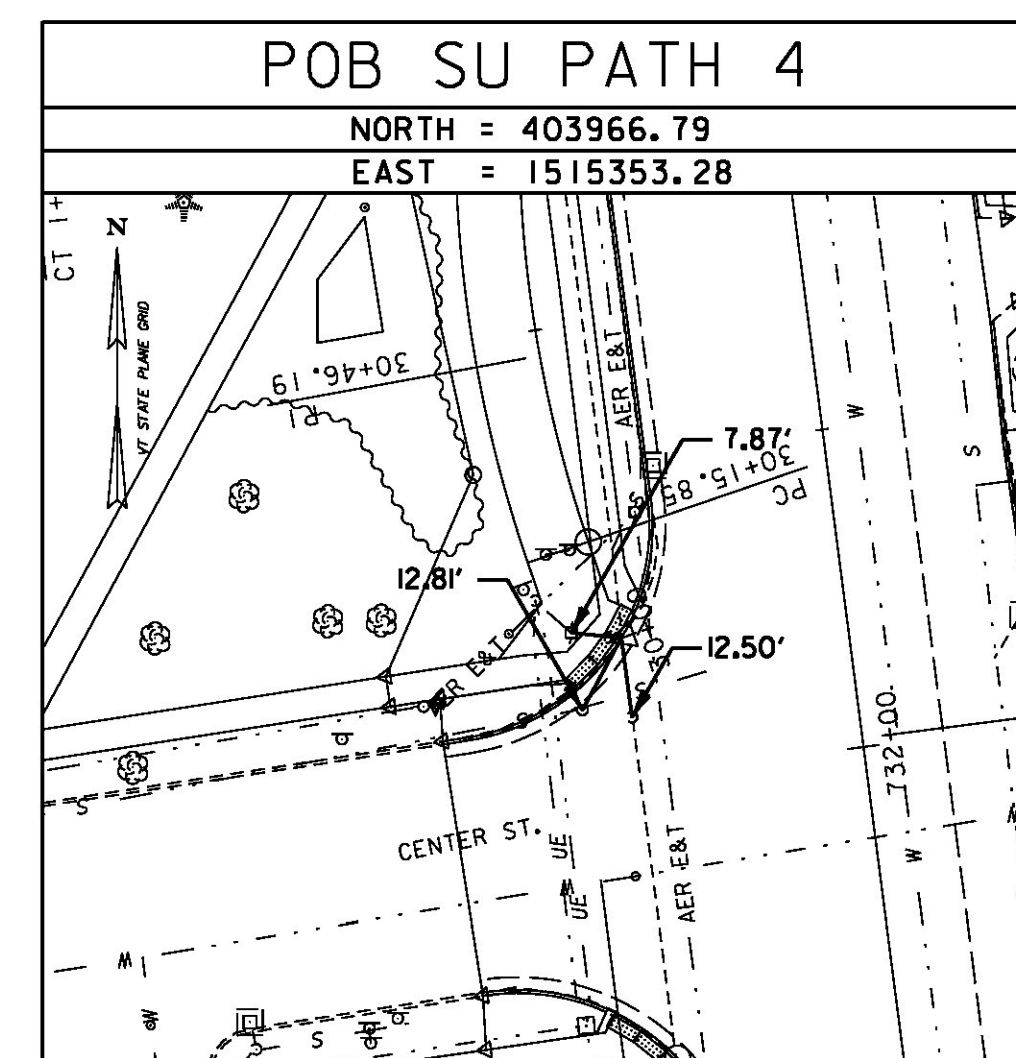
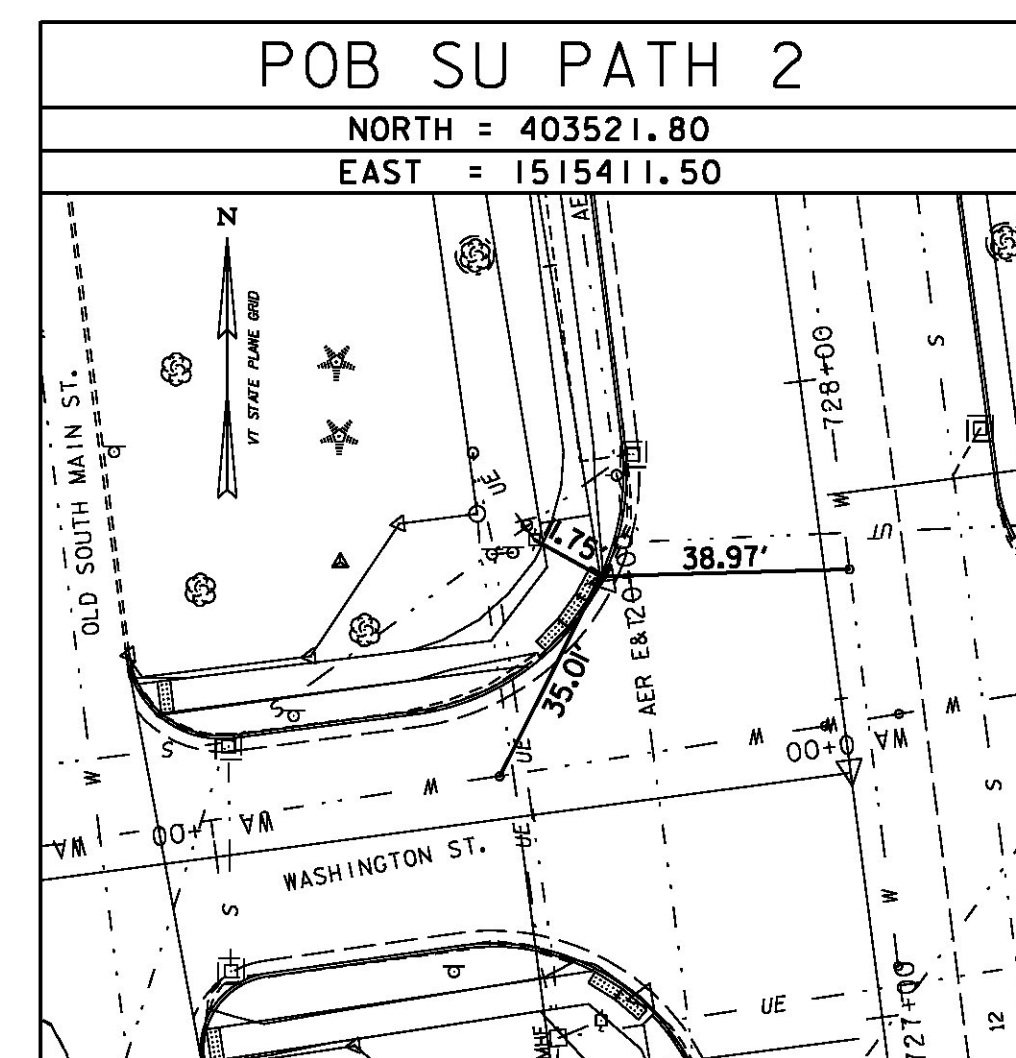
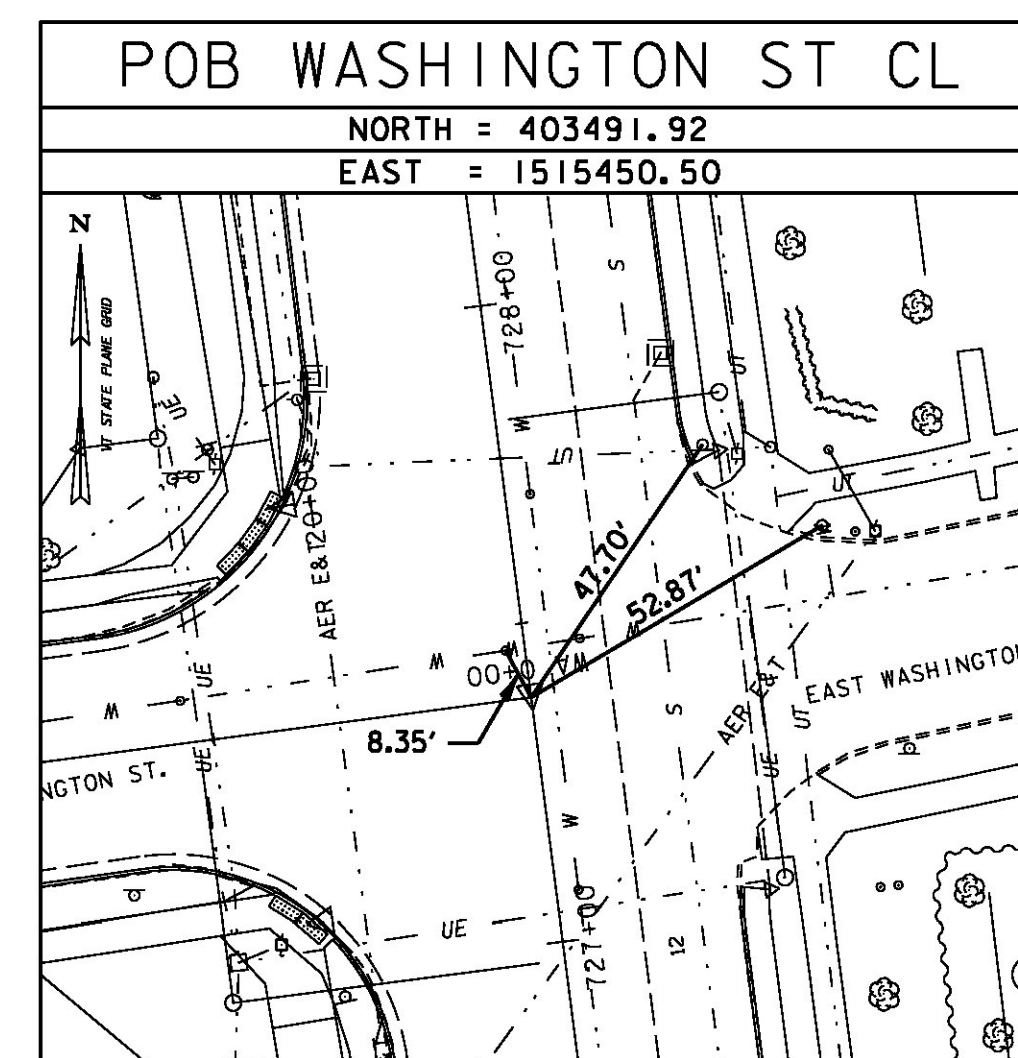
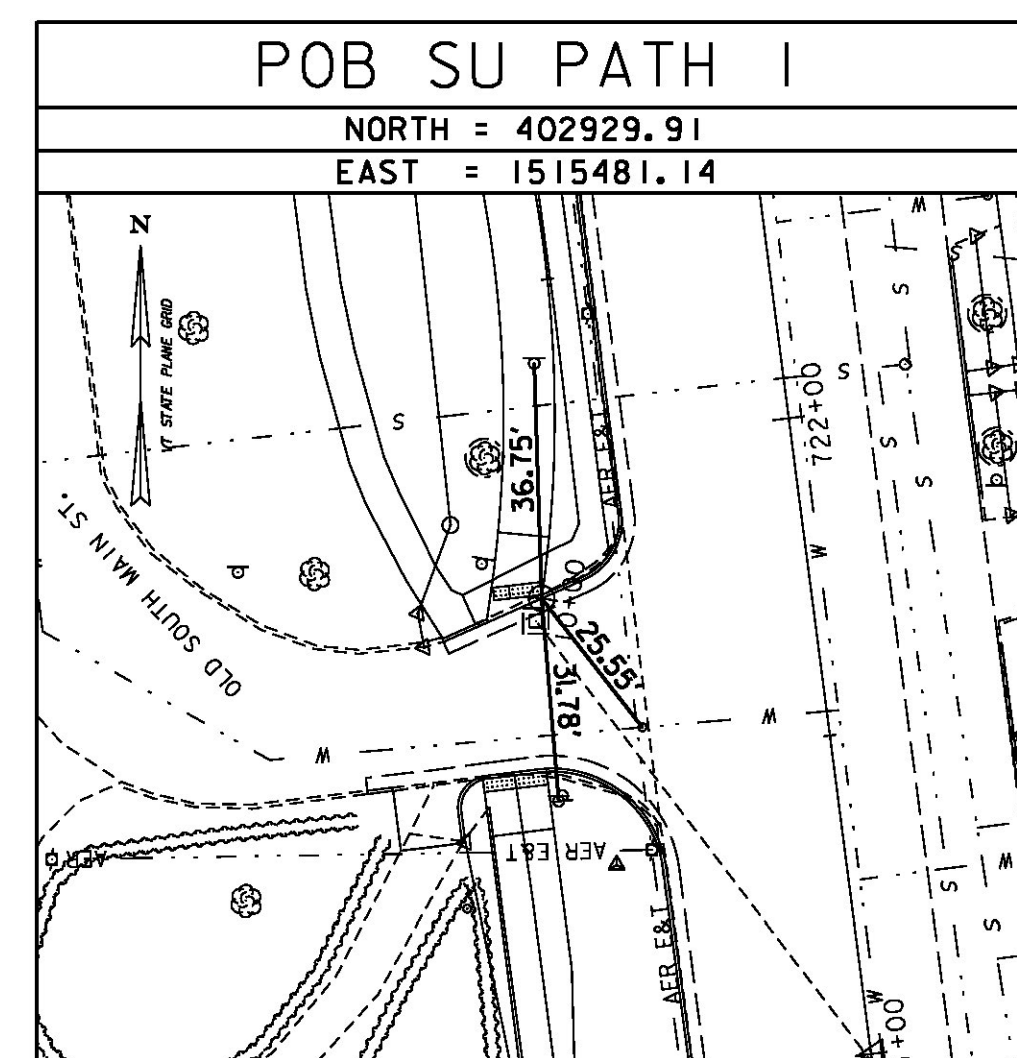
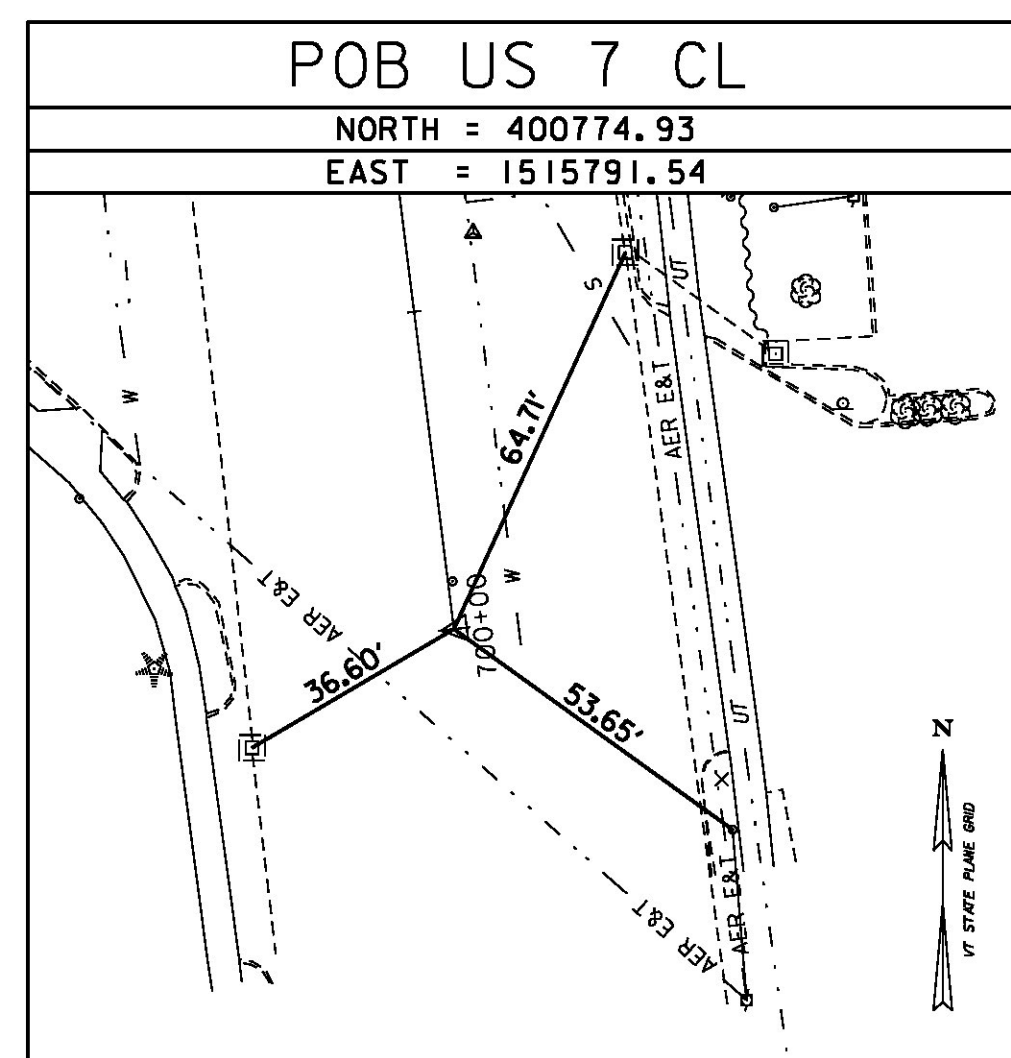
DESCRIBED BY VERMONT GEODETIC SURVEY 1997, GENERAL LOCATION, RUTLAND CITY, TO REACH FROM THE INTERSECTION OF U.S. ROUTE 7 (MAIN STREET) AND U.S. ROUTE 4 EAST (WOODSTOCK AVENUE) GO SOUTH ON U.S. ROUTE 7 FOR 0.5 MI (0.8 KM) TO THE INTERSECTION OF ENGREM AVENUE ON THE LEFT AND THE MARK ON THE LEFT IN THE NORTHEAST QUADRANT OF THE INTERSECTION. THE MARK IS SET FLUSH WITH GROUND SURFACE IN THE TOP OF A 20" (50 CM) DIAMETER CONCRETE MONUMENT IN A GRASS STRIP BETWEEN THE ROAD AND A CONCRETE SIDEWALK. IT IS 4.3 FT (1.3 M) EAST OF THE EAST CURB OF U.S. ROUTE 7, 68.2 FT (20.8 M) NORTH OF THE CENTERLINE OF ENGREM AVENUE, 4.6 FT (1.4 M) WEST OF THE WEST EDGE OF THE CONCRETE SIDEWALK, 55.1 FT (16.8 M) SOUTH OF A 16" (40 CM) ASH TREE, AND 11.8 FT (3.6 M) SOUTH OF A 4" (10 CM) CRAB APPLE TREE.

TRAVERSE TIES



* MAIN TRAVERSE COMPLETED: NOVEMBER 14, 2005 BY VSE, M. HUDSON-PC, M. YEFCHAK

ALIGNMENT TIES



DATUM	
VERTICAL	NAVD 88 FT
HORIZONTAL	NAD 83(1996) sFT
ADJUSTMENT	LSO

SHEET PREPARED BY VERMONT SURVEY AND ENGINEERING

PROJECT NAME: RUTLAND CITY
 PROJECT NUMBER: STP 019-3(57)

FILE NAME: ...rut_survey_tie_sheet.dgn PLOT DATE: 7/12/2013
 PROJECT LEADER: GAE DRAWN BY: PZA
 DESIGNED BY: TFD CHECKED BY: GAE
 SURVEY TIE SHEET TIE-01 SHEET 268 OF 392