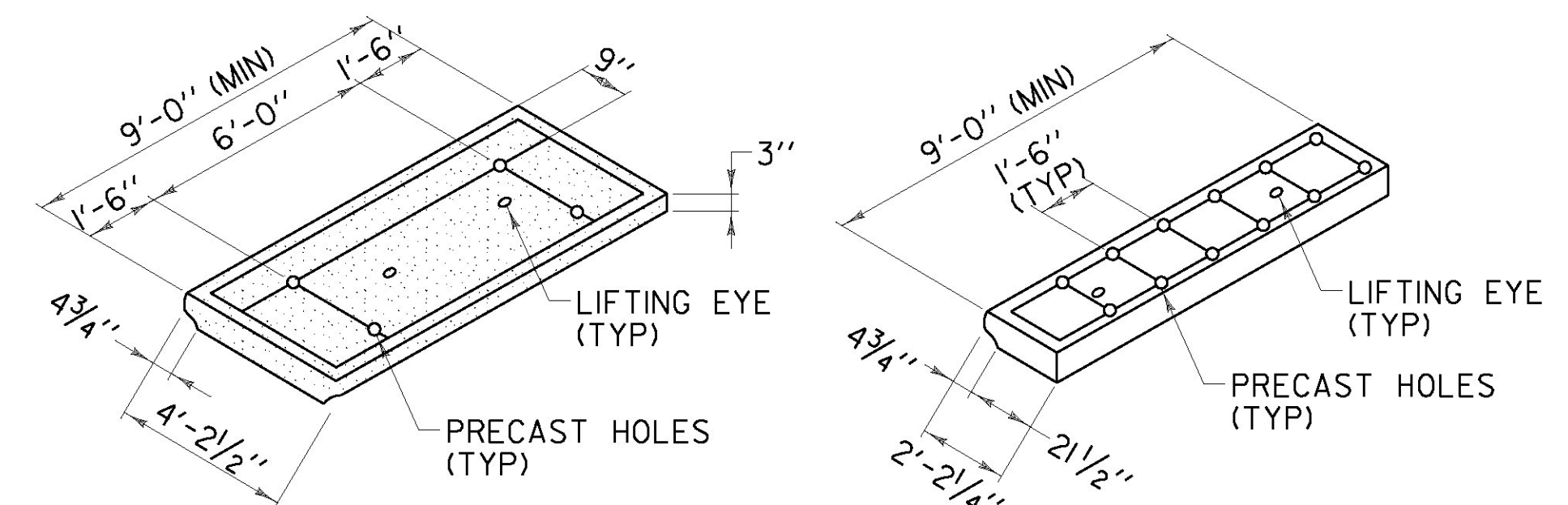


SUPERPAVE BITUMINOUS CONCRETE PAVEMENT  
BASE COURSE INCIDENTAL TO ITEM 490.30,  
AS DIRECTED BY THE ENGINEER.

**SECTION VIEW**

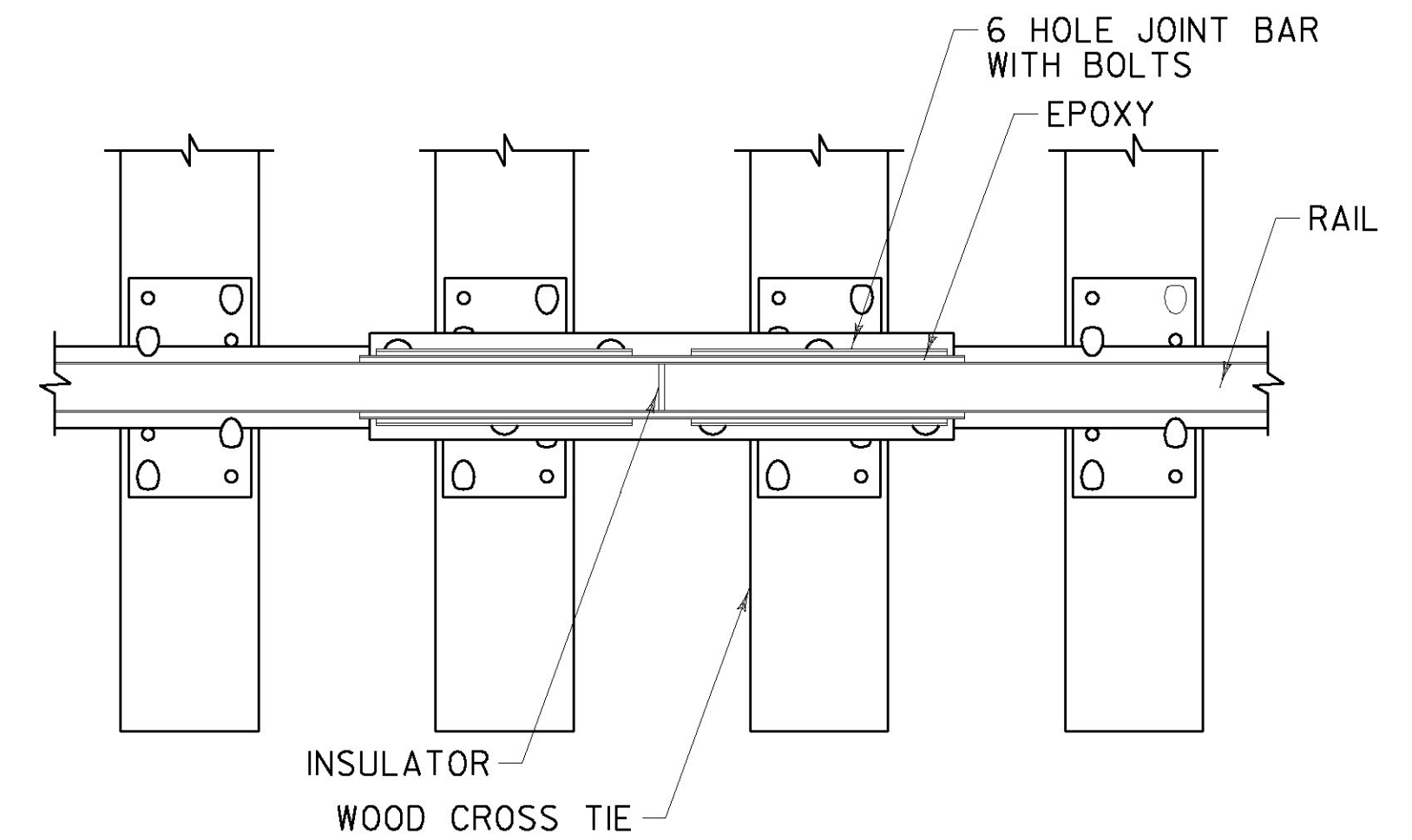


**ISOMETRIC VIEWS**

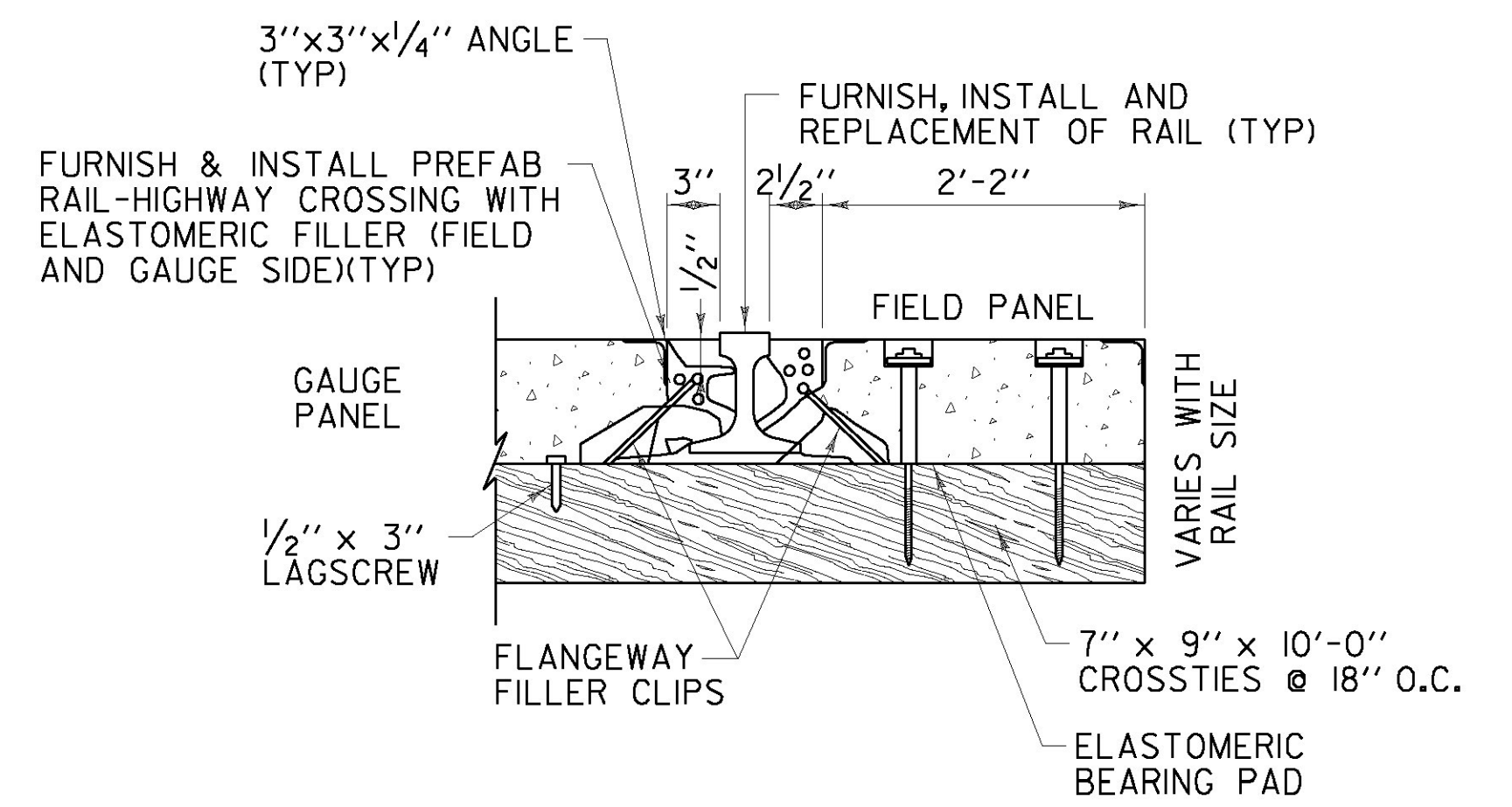
NOTE:  
1. THE DIMENSIONS SHOWN ARE THE MINIMUM ACCEPTABLE DIMENSIONS FOR THE MANUFACTURING OF THE FIELD AND GAUGE PANELS. THE CONTRACTOR SHALL PROVIDE THE ENGINEER WITH THE DESIRED MANUFACTURER'S DETAILS FOR APPROVAL PRIOR TO ORDERING GAUGE AND FIELD PANELS.

**GAUGE AND FIELD PANEL DETAILS**

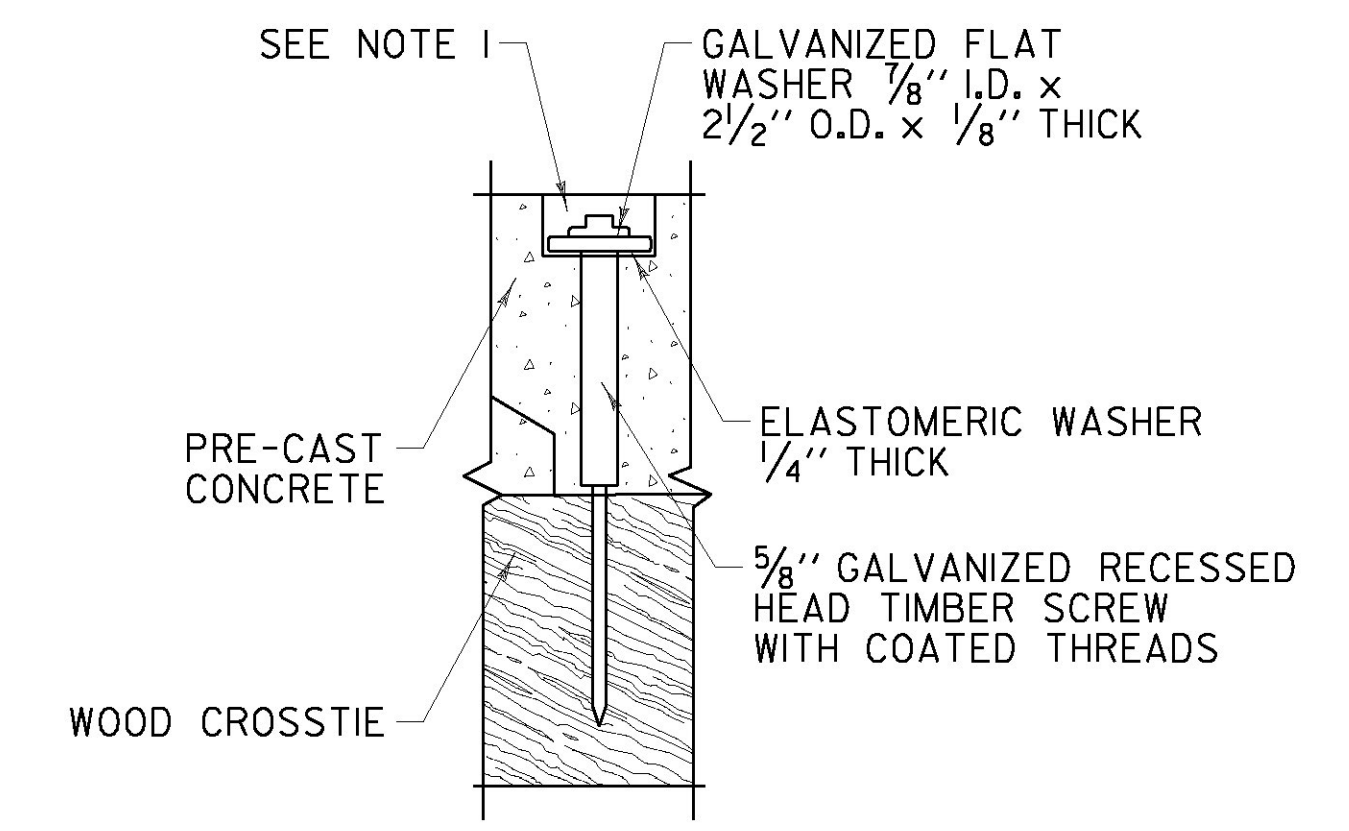
MINIMUM PANEL LENGTH	9'-0"
GAUGE PANEL WIDTH	4'-2 1/2"
FIELD PANEL WIDTH	2'-2 1/4"
HEIGHT DETERMINED BY RAIL SIZE	6" TO 8 1/2"
DIMENSION TOLERANCE	± 1/4"
CROSSTIE CENTERS REQUIRED	1'-6"
CROSSTIE LENGTH REQUIRED	10'-0"
CONCRETE	6000 LBS. PSI, 28 DAYS MIN.
REINFORCEMENT REBAR	AMERICAN GRADE 72
LIFTING EYES	4000 LBS. CAPACITY EACH
MEETS HS20-44 LOADING SPECS.	



**INSULATED JOINT DETAIL (SUSPENDED JOINT)**

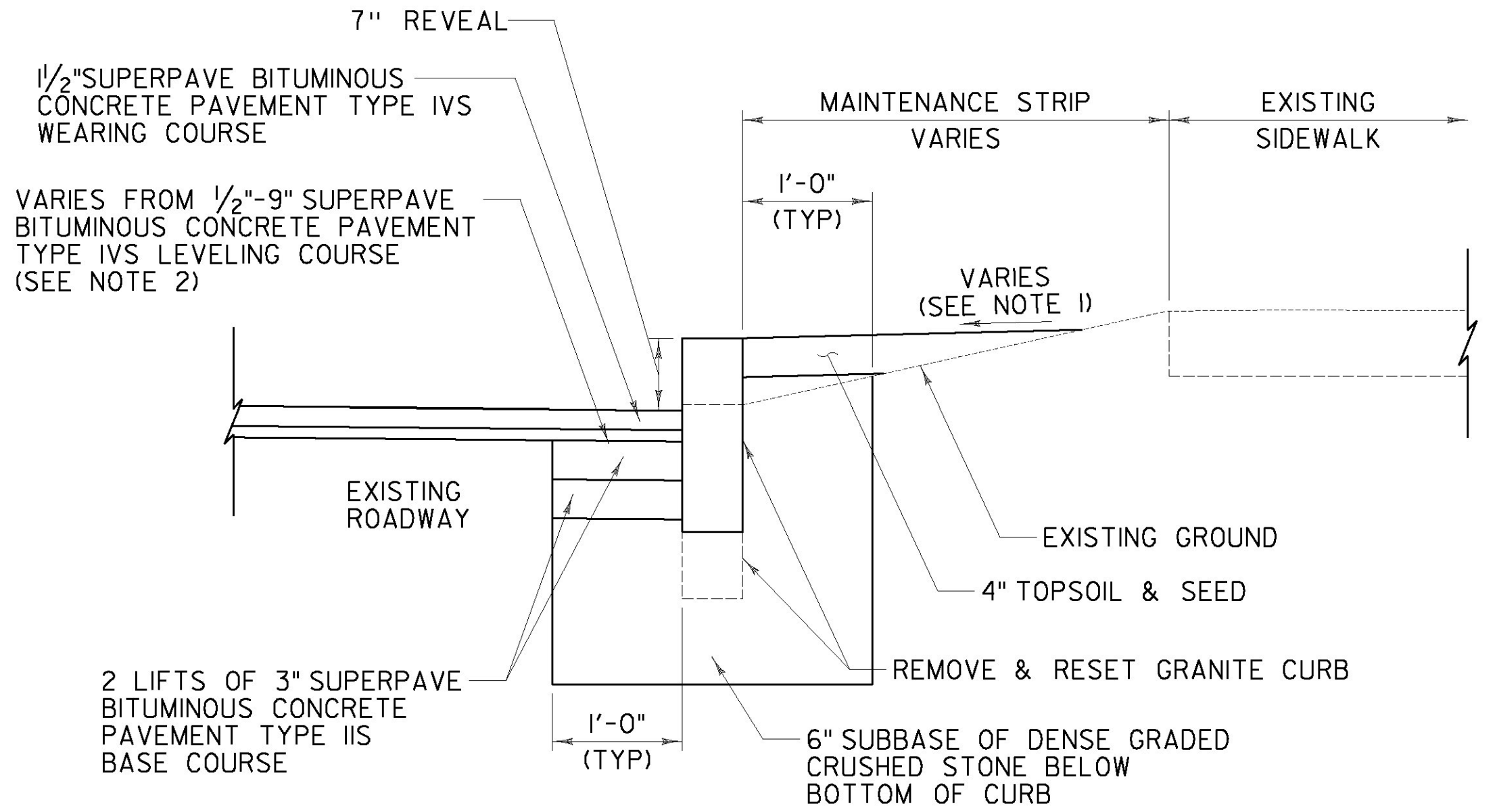


**ENLARGED SECTION AT RAIL SEAL**



**SCREW DETAIL**

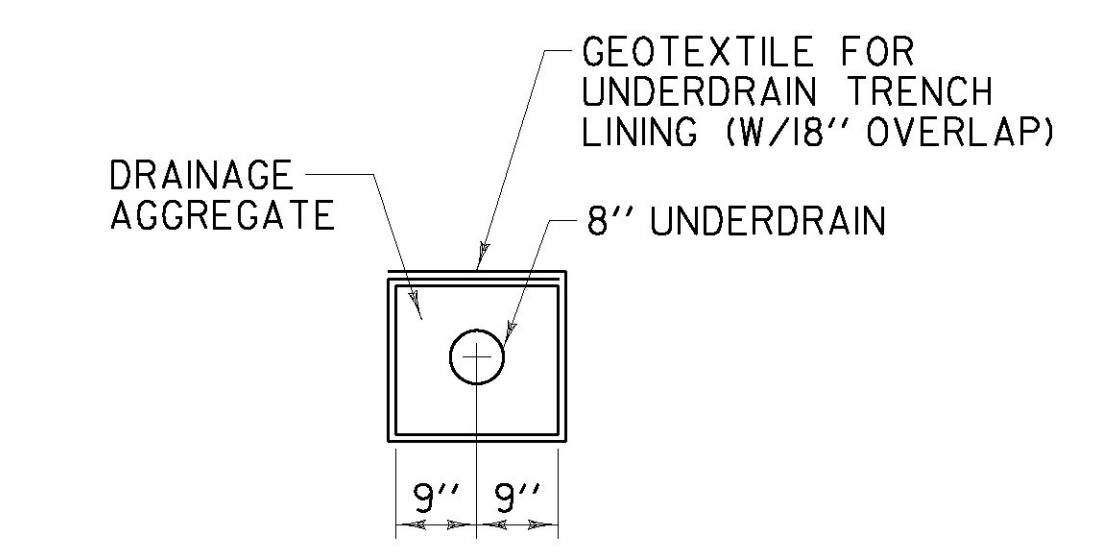
NOTE:  
1. CONTRACTOR SHALL FILL TO THE TOP OF CONCRETE PANEL WITH SIKAFLEX OR EQUIVALENT POLYURETHANE SEALANT AS DIRECTED BY THE ENGINEER; PAYMENT SHALL BE INCIDENTAL TO ITEM 900.645 SPECIAL PROVISION (PRECAST CONCRETE PANEL GRADE CROSSING SURFACE) (AARDOT 851-286U).



**CROSS SECTION REMOVE AND RESET CURB**

STA 24+00.0 TO STA 24+17.0, LT  
STA 24+26.5 TO STA 24+66.0, RT  
STA 24+90.0 TO STA 25+19.0, LT  
STA 25+38.0 TO STA 25+73.5, RT  
STA 25+59.0 TO STA 25+77.0, LT  
STA 25+94.0 TO STA 26+54.0, LT  
STA 26+08.0 TO STA 26+50.0, RT

NOTES:  
1. GRADE TOPSOIL AREA TO PROMOTE POSITIVE DRAINAGE AWAY FROM THE SIDEWALK TO THE CURBLINE.  
2. THE ENTIRE ROADWAY SHALL BE COLD PLANED 2" AND PAVED WITH 1/2" TYPE IVS WEARING COURSE. TYPE IVS LEVELING COURSE SHALL VARY WITH A MINIMUM OF 1/2" TO A MAXIMUM OF 9". SEE SHEET 253 FOR PROPOSED GRADING PLAN.



**CROSS SECTION UNDERDRAIN WITH GEOTEXTILE**  
(SEE NOTE 14 ON SHEET 249)

NOT TO SCALE

<b>GRADE CROSSING DETAILS SHEET</b>	PROJECT NAME:	RUTLAND CITY
	PROJECT NUMBER:	NH 2716(I)
	FILE NAME:	p07d188.dgn
	IPARM FILE:	07d188r08.t
	PLOT DATE:	7/22/2013
	DRAWN BY:	W.G.P.
	CHECKED BY:	D.E.G.
	SHEET	256 OF 392

FILE NAME = U:\17762\CAADD\N\STIN\NH\_2716\07d188.rvt - BB.dgn  
DATE/TIME = 7/22/2013 10:26:23  
USER = 2676