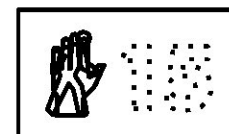


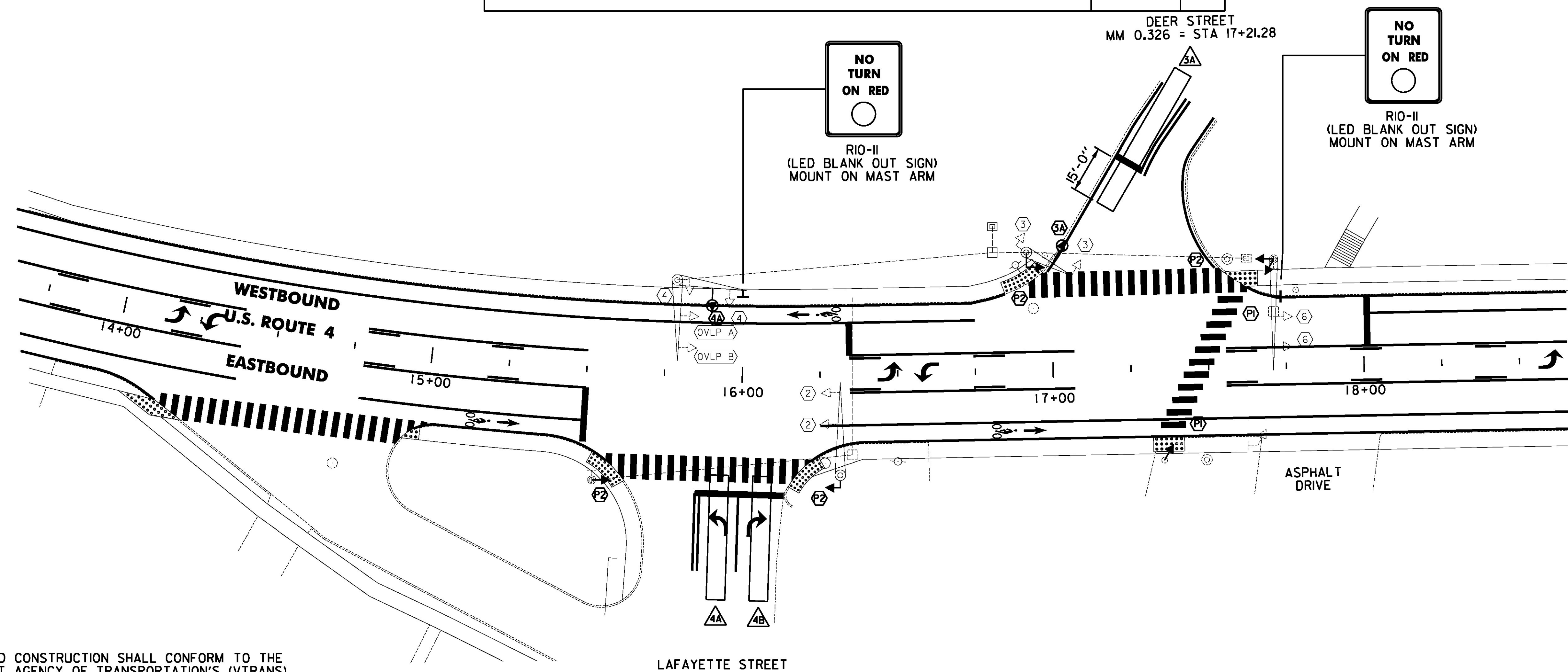
PEDESTRIAN SIGNAL HEADS



FACES P1, P2

ITEM 900.620 SPECIAL PROVISION (PEDESTRIAN SIGNAL HEADS, COUNTDOWN) (U.S. ROUTE 4 @ DEER STREET)			
DESCRIPTION	QUANTITY	UNIT	
16"x18" LED PEDESTRIAN HEAD WITH VISOR & MOUNTING HARDWARE (HAND/MAN SYMBOLS WITH COUNTDOWN TIMER)	SIDE MOUNT	4	EA
	POST TOP MOUNT	2	EA
ITEM 900.620 SPECIAL PROVISION (LED BLANK OUT SIGNS)			
24" X 30" "NO TURN ON RED" LED BLANK OUT SIGN	2	EA	

ITEM 900.620 SPECIAL PROVISION (VIDEO VEHICLE DETECTION SYSTEM) (U.S. ROUTE 4 @ DEER STREET)			
QUANTITY	UNIT	DESCRIPTION	
2	EA	VIDEO DETECTOR CAMERA ASSEMBLY WITH INTEGRATED MVP	
1	EA	VIDEO DETECTOR CIP	
1	EA	VIDEO DETECTOR PORT MASTER	
225	LF	VIDEO DETECTOR CABLE	
2	EA	VIDEO DETECTOR CAMERA MOUNTING BRACKET	



NOTES:

- ALL MATERIALS AND CONSTRUCTION SHALL CONFORM TO THE STATE OF VERMONT AGENCY OF TRANSPORTATION'S (VTRANS) "STANDARD SPECIFICATIONS FOR CONSTRUCTION" DATED 2011, WITH CURRENT MODIFICATIONS.
- THIS PLAN SHEET IS NOT TO SCALE AND SHALL ONLY BE USED AS A GUIDE FOR VIDEO VEHICLE DETECTOR PLACEMENT. THE CONTRACTOR SHALL CONFIRM ALL LOCATIONS IN THE FIELD WITH THE ENGINEER PRIOR TO INSTALLATION. LOCATIONS MAY BE REVISED AS A RESULT OF THE SITE SURVEY.
- VIDEO VEHICLE DETECTORS SHALL BE PLACED SO THAT OCCLUSION IS MINIMIZED AND PHASING IS NOT AFFECTED.
- VIDEO DETECTION AREAS SHALL EXTEND FIVE FEET PAST THE STOP BAR.
- SEE THE PLANS AND THE SPECIAL PROVISIONS FOR A DETAILED LIST OF EQUIPMENT.
- VIDEO DETECTION AREAS 3A AND 4A ARE IN NON-LOCK PRESENCE MODE, VIDEO DETECTION AREA 4B IS IN DELAY MODE, 5 SECONDS, LOCK.
- THE CONTRACTOR SHALL VERIFY IN THE FIELD THAT THERE IS ADEQUATE SPACE IN THE CONDUIT AND CONTROLLER FOR VIDEO DETECTION AND BLANK OUT SIGN CABLE AND EQUIPMENT. THE CONTRACTOR SHALL CONTACT THE ENGINEER IF SUFFICIENT SPACE IS NOT AVAILABLE.
- CONTRACTOR TO SCHEDULE FINAL INSPECTION AND OBTAIN WRITTEN APPROVAL OF WORK FROM THE VTRANS TRAFFIC SIGNAL TECHNICIAN.
- ALL SIGNAL EQUIPMENT SHALL BE PAINTED FLAT BLACK IN ACCORDANCE WITH THE SPECIAL PROVISIONS.
- ALL SIGNAL EQUIPMENT AND MAST ARM MOUNTED SIGNS SHALL HAVE SAFETY CABLES.
- A UNIFORMED TRAFFIC OFFICER WITH A BLUE LIGHT SHALL BE PRESENT DURING ALL LANE CLOSURES.
- ALL ELECTRICAL WIRING SHALL BE DONE BY A LICENSED ELECTRICIAN AND OVERSEEN BY A MASTER ELECTRICIAN.
- DISCONNECT WIRING TO EXISTING PEDESTRIAN SIGNAL HEADS. THE EXISTING PEDESTRIAN SIGNAL HEADS SHALL BE REMOVED AND RETURNED TO THE CITY OF RUTLAND. THE PROPOSED PEDESTRIAN SIGNAL HEADS SHALL BE INSTALLED ON EXISTING POLES. EXISTING WIRING SHALL BE CONNECTED TO THE NEW PEDESTRIAN SIGNALS.
- THE PEDESTRIAN SIGNAL PHASING SHALL BE CHANGED SO THAT PHASE (P) (TO CROSS U.S. ROUTE 4) IS AN EXCLUSIVE PEDESTRIAN MOVEMENT. ALL VEHICLE MOVEMENTS (PHASES 2,3,4,6 OVLP A, AND OVLP B) SHALL DISPLAY A RED INDICATION DURING THIS PHASE. THE LED "NO TURN ON RED" BLANK OUT SIGNS SHALL BE ACTIVATED DURING PEDESTRIAN PHASE (P).
- ADJUST EXISTING SIGNAL HEADS (6) AS SHOWN

LEGEND	
DESCRIPTION	
	EXISTING ANTENNA & PREEMPTION LIGHT
	EXISTING CONDUIT
	EXISTING JUNCTION BOX
	EXISTING CONTROLLER CABINET
	EXISTING SIGNAL POLE
	PROPOSED VIDEO DETECTION AREA
	PROPOSED VIDEO DETECTOR
	EXISTING SIGNAL
	PROPOSED SIGNAL

NOT TO SCALE

TRAFFIC SIGNAL PLAN SHEET #4 ALTERNATE B	PROJECT NAME: RUTLAND CITY	PLOT DATE: 7/19/2013
	PROJECT NUMBER: NH 2716(I)	DRAWN BY: M.E.D.
	FILE NAME: p07dl88.dgn	CHECKED BY: D.E.G.
	DESIGNED BY: M.J.M.	SHEET 247 OF 392
	IPARM FILE: 07dl88vd04B.1	

FILE NAME: I:\177652\ACADD\WSTIN\NH_2716\US 4 B1a Lemna\97d188_vd_04B.dgn
 DATE/TIME: 7/19/2013 4:49:16
 USER: