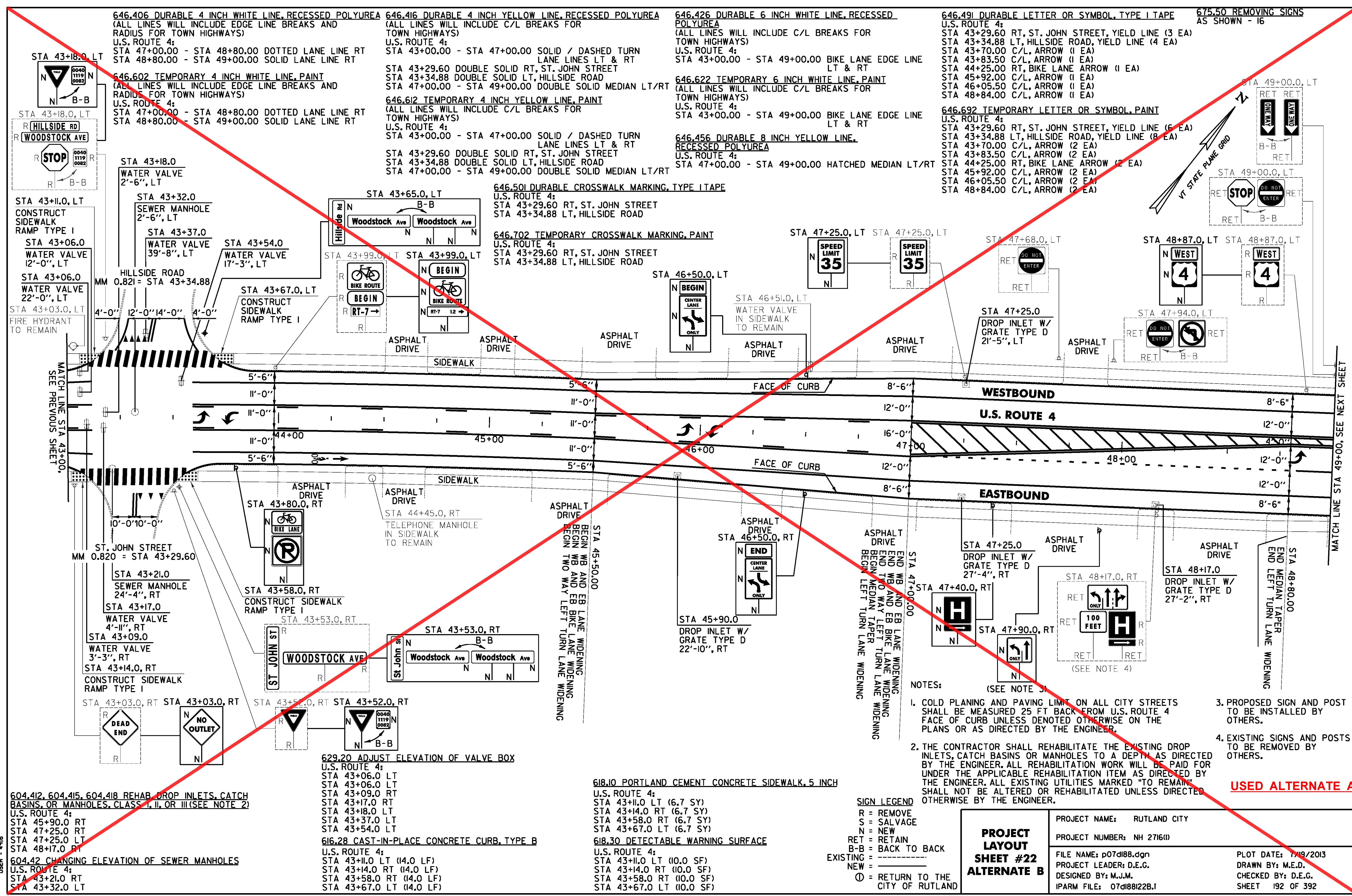
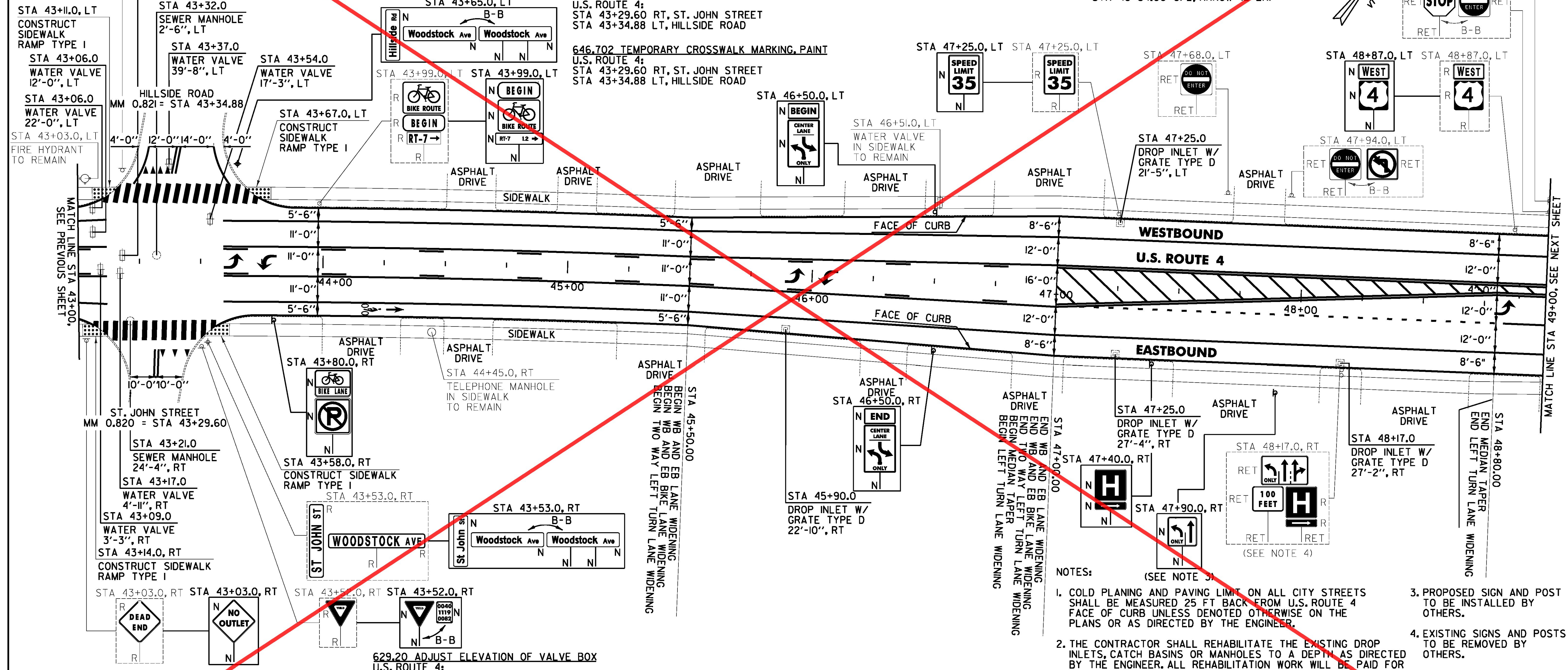


FILE NAME: I:\177653\CAD\DWG\177653.dwg
 DATE/TIME: 7/19/2013 4:56
 USER: LEMER



- 646.406 DURABLE 4 INCH WHITE LINE, RECESSED POLYUREA (ALL LINES WILL INCLUDE EDGE LINE BREAKS AND RADIUS FOR TOWN HIGHWAYS)
 U.S. ROUTE 4:
 STA 47+00.00 - STA 48+80.00 DOTTED LANE LINE RT
 STA 48+80.00 - STA 49+00.00 SOLID LANE LINE RT
- 646.602 TEMPORARY 4 INCH WHITE LINE, PAINT (ALL LINES WILL INCLUDE EDGE LINE BREAKS AND RADIUS FOR TOWN HIGHWAYS)
 U.S. ROUTE 4:
 STA 47+00.00 - STA 48+80.00 DOTTED LANE LINE RT
 STA 48+80.00 - STA 49+00.00 SOLID LANE LINE RT
- 646.416 DURABLE 4 INCH YELLOW LINE, RECESSED POLYUREA (ALL LINES WILL INCLUDE C/L BREAKS FOR TOWN HIGHWAYS)
 U.S. ROUTE 4:
 STA 43+00.00 - STA 47+00.00 SOLID / DASHED TURN LANE LINES LT & RT
 STA 43+29.60 DOUBLE SOLID RT, ST. JOHN STREET
 STA 43+34.88 DOUBLE SOLID LT, HILLSIDE ROAD
 STA 47+00.00 - STA 49+00.00 DOUBLE SOLID MEDIUM LT/RT
- 646.612 TEMPORARY 4 INCH YELLOW LINE, PAINT (ALL LINES WILL INCLUDE C/L BREAKS FOR TOWN HIGHWAYS)
 U.S. ROUTE 4:
 STA 43+00.00 - STA 47+00.00 SOLID / DASHED TURN LANE LINES LT & RT
 STA 43+29.60 DOUBLE SOLID RT, ST. JOHN STREET
 STA 43+34.88 DOUBLE SOLID LT, HILLSIDE ROAD
 STA 47+00.00 - STA 49+00.00 DOUBLE SOLID MEDIUM LT/RT
- 646.426 DURABLE 6 INCH WHITE LINE, RECESSED POLYUREA (ALL LINES WILL INCLUDE C/L BREAKS FOR TOWN HIGHWAYS)
 U.S. ROUTE 4:
 STA 43+00.00 - STA 49+00.00 BIKE LANE EDGE LINE LT & RT
- 646.622 TEMPORARY 6 INCH WHITE LINE, PAINT (ALL LINES WILL INCLUDE C/L BREAKS FOR TOWN HIGHWAYS)
 U.S. ROUTE 4:
 STA 43+00.00 - STA 49+00.00 BIKE LANE EDGE LINE LT & RT
- 646.456 DURABLE 8 INCH YELLOW LINE, RECESSED POLYUREA
 U.S. ROUTE 4:
 STA 47+00.00 - STA 49+00.00 HATCHED MEDIAN LT/RT
- 646.491 DURABLE LETTER OR SYMBOL, TYPE I TAPE AS SHOWN - 16
 U.S. ROUTE 4:
 STA 43+29.60 RT, ST. JOHN STREET, YIELD LINE (3 EA)
 STA 43+34.88 LT, HILLSIDE ROAD, YIELD LINE (4 EA)
 STA 43+70.00 C/L, ARROW (1 EA)
 STA 43+83.50 C/L, ARROW (1 EA)
 STA 44+25.00 RT, BIKE LANE ARROW (1 EA)
 STA 45+92.00 C/L, ARROW (1 EA)
 STA 46+05.50 C/L, ARROW (1 EA)
 STA 48+84.00 C/L, ARROW (1 EA)
- 646.692 TEMPORARY LETTER OR SYMBOL, PAINT
 U.S. ROUTE 4:
 STA 43+29.60 RT, ST. JOHN STREET, YIELD LINE (6 EA)
 STA 43+34.88 LT, HILLSIDE ROAD, YIELD LINE (8 EA)
 STA 43+70.00 C/L, ARROW (2 EA)
 STA 43+83.50 C/L, ARROW (2 EA)
 STA 44+25.00 RT, BIKE LANE ARROW (2 EA)
 STA 45+92.00 C/L, ARROW (2 EA)
 STA 46+05.50 C/L, ARROW (2 EA)
 STA 48+84.00 C/L, ARROW (2 EA)



NOTES:

- COLD PLANING AND PAVING LIMIT ON ALL CITY STREETS SHALL BE MEASURED 25 FT BACK FROM U.S. ROUTE 4 FACE OF CURB UNLESS DENOTED OTHERWISE ON THE PLANS OR AS DIRECTED BY THE ENGINEER.
- THE CONTRACTOR SHALL REHABILITATE THE EXISTING DROP INLETS, CATCH BASINS OR MANHOLES TO A DEPTH AS DIRECTED BY THE ENGINEER. ALL REHABILITATION WORK WILL BE PAID FOR UNDER THE APPLICABLE REHABILITATION ITEM AS DIRECTED BY THE ENGINEER. ALL EXISTING UTILITIES MARKED "TO REMAIN" SHALL NOT BE ALTERED OR REHABILITATED UNLESS DIRECTED OTHERWISE BY THE ENGINEER.
- PROPOSED SIGN AND POST TO BE INSTALLED BY OTHERS.
- EXISTING SIGNS AND POSTS TO BE REMOVED BY OTHERS.

SIGN LEGEND

R = REMOVE
 S = SALVAGE
 N = NEW
 RET = RETAIN
 B-B = BACK TO BACK
 EXISTING = -----
 NEW = _____
 ⊙ = RETURN TO THE CITY OF RUTLAND

PROJECT LAYOUT SHEET #22 ALTERNATE B

PROJECT NAME: RUTLAND CITY	PROJECT NUMBER: NH 2716(1)
FILE NAME: p07d188.dgn	PLOT DATE: 7/19/2013
PROJECT LEADER: D.E.G.	DRAWN BY: M.E.D.
DESIGNED BY: M.J.M.	CHECKED BY: D.E.G.
IPARM FILE: 07d188122B.1	SHEET 192 OF 392

USED ALTERNATE A