

646.426 DURABLE 6 INCH WHITE LINE, RECESSED POLYUREA
 (ALL LINES WILL INCLUDE EDGE LINE BREAKS AND RADIUS FOR TOWN HIGHWAYS)
 U.S. ROUTE 4:
 STA 31+00.00 - STA 37+00.00 BIKE LANE EDGE LINE LT & RT

646.622 TEMPORARY 6 INCH WHITE LINE, PAINT
 (ALL LINES WILL INCLUDE EDGE LINE BREAKS AND RADIUS FOR TOWN HIGHWAYS)
 U.S. ROUTE 4:
 STA 31+00.00 - STA 37+00.00 BIKE LANE EDGE LINE LT & RT

646.416 DURABLE 4 INCH YELLOW LINE, RECESSED POLYUREA
 (ALL LINES WILL INCLUDE C/L BREAKS FOR TOWN HIGHWAYS)
 U.S. ROUTE 4:
 STA 31+00.00 - STA 37+00.00 SOLID / DASHED TURN LANE LINES LT & RT
 STA 36+37.92 DOUBLE SOLID RT, JASMIN LANE

646.612 TEMPORARY 4 INCH YELLOW LINE, PAINT
 (ALL LINES WILL INCLUDE C/L BREAKS FOR TOWN HIGHWAYS)
 U.S. ROUTE 4:
 STA 31+00.00 - STA 37+00.00 SOLID / DASHED TURN LANE LINES LT & RT
 STA 36+37.92 DOUBLE SOLID RT, JASMIN LANE

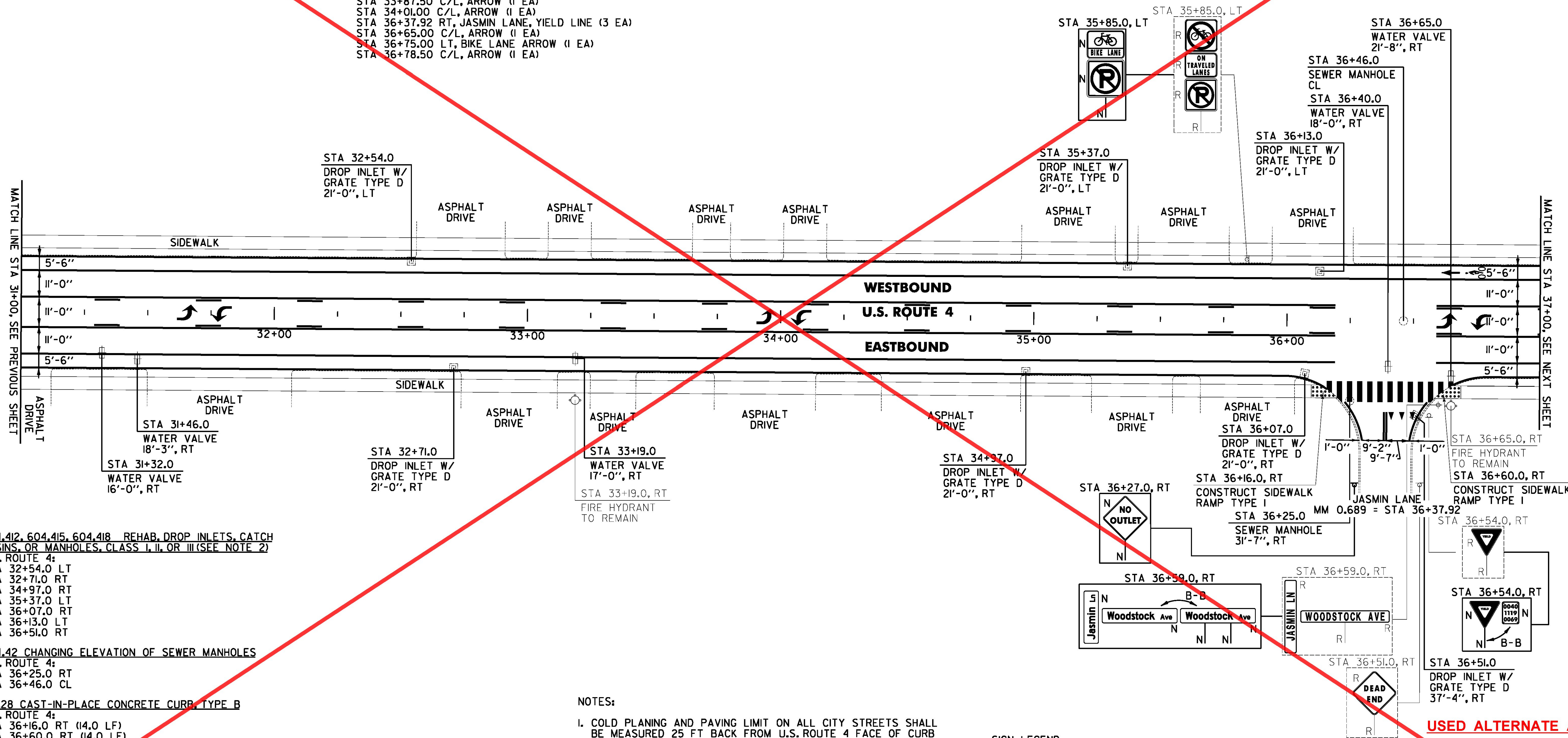
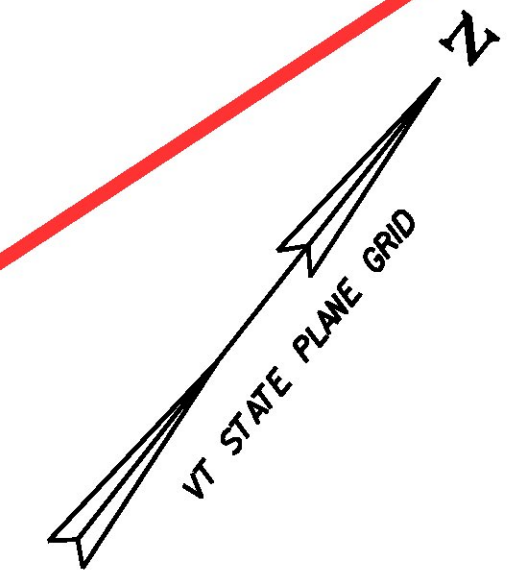
646.491 DURABLE LETTER OR SYMBOL, TYPE I TAPE
 U.S. ROUTE 4:
 STA 31+65.50 C/L, ARROW (1 EA)
 STA 31+79.00 C/L, ARROW (1 EA)
 STA 33+87.50 C/L, ARROW (1 EA)
 STA 34+01.00 C/L, ARROW (1 EA)
 STA 36+37.92 RT, JASMIN LANE, YIELD LINE (3 EA)
 STA 36+65.00 C/L, ARROW (1 EA)
 STA 36+75.00 LT, BIKE LANE ARROW (1 EA)
 STA 36+78.50 C/L, ARROW (1 EA)

646.692 TEMPORARY LETTER OR SYMBOL, PAINT
 U.S. ROUTE 4:
 STA 31+65.50 C/L, ARROW (2 EA)
 STA 31+79.00 C/L, ARROW (2 EA)
 STA 33+87.50 C/L, ARROW (2 EA)
 STA 34+01.00 C/L, ARROW (2 EA)
 STA 36+37.92 RT, JASMIN LANE, YIELD LINE (6 EA)
 STA 36+65.00 C/L, ARROW (2 EA)
 STA 36+75.00 LT, BIKE LANE ARROW (2 EA)
 STA 36+78.50 C/L, ARROW (2 EA)

646.501 DURABLE CROSSWALK MARKING, TYPE I TAPE
 U.S. ROUTE 4:
 STA 36+37.92 RT, JASMIN LANE

646.702 TEMPORARY CROSSWALK MARKING, PAINT
 U.S. ROUTE 4:
 STA 36+37.92 RT, JASMIN LANE

675.50 REMOVING SIGNS
 AS SHOWN - 7



604.412, 604.415, 604.418 REHAB. DROP INLETS, CATCH BASINS, OR MANHOLES, CLASS I, II, OR III (SEE NOTE 2)
 U.S. ROUTE 4:
 STA 32+54.0 LT
 STA 32+71.0 RT
 STA 34+97.0 RT
 STA 35+37.0 LT
 STA 36+07.0 RT
 STA 36+13.0 LT
 STA 36+51.0 RT

604.42 CHANGING ELEVATION OF SEWER MANHOLES
 U.S. ROUTE 4:
 STA 36+25.0 RT
 STA 36+46.0 CL

616.28 CAST-IN-PLACE CONCRETE CURB, TYPE B
 U.S. ROUTE 4:
 STA 36+16.0 RT (14.0 LF)
 STA 36+60.0 RT (14.0 LF)

618.10 PORTLAND CEMENT CONCRETE SIDEWALK, 5 INCH
 U.S. ROUTE 4:
 STA 36+16.0 RT (6.7 SY)
 STA 36+60.0 RT (6.7 SY)

618.30 DETECTABLE WARNING SURFACE
 U.S. ROUTE 4:
 STA 36+16.0 RT (10.0 SF)
 STA 36+60.0 RT (10.0 SF)

629.20 ADJUST ELEVATION OF VALVE BOX
 U.S. ROUTE 4:
 STA 31+32.0 RT
 STA 31+46.0 RT
 STA 33+19.0 RT
 STA 36+40.0 RT
 STA 36+65.0 RT

NOTES:

- COLD PLANING AND PAVING LIMIT ON ALL CITY STREETS SHALL BE MEASURED 25 FT BACK FROM U.S. ROUTE 4 FACE OF CURB UNLESS DENOTED OTHERWISE ON THE PLANS OR AS DIRECTED BY THE ENGINEER.
- THE CONTRACTOR SHALL REHABILITATE THE EXISTING DROP INLETS, CATCH BASINS OR MANHOLES TO A DEPTH AS DIRECTED BY THE ENGINEER. ALL REHABILITATION WORK WILL BE PAID FOR UNDER THE APPLICABLE REHABILITATION ITEM AS DIRECTED BY THE ENGINEER. ALL EXISTING UTILITIES MARKED "TO REMAIN" SHALL NOT BE ALTERED OR REHABILITATED UNLESS DIRECTED OTHERWISE BY THE ENGINEER.

SIGN LEGEND
 R = REMOVE
 S = SALVAGE
 N = NEW
 RET = RETAIN
 B-B = BACK TO BACK
 EXISTING = -----
 NEW = _____
 ⊕ = RETURN TO THE CITY OF RUTLAND

PROJECT LAYOUT SHEET #20 ALTERNATE B

PROJECT NAME: RUTLAND CITY	PLOT DATE: 7/19/2013
PROJECT NUMBER: NH 2716(1)	DRAWN BY: M.E.D.
FILE NAME: p07d188.dgn	CHECKED BY: D.E.G.
PROJECT LEADER: D.E.G.	SHEET 190 OF 392
DESIGNED BY: M.J.M.	
IPARM FILE: 07d188120B.1	

USED ALTERNATE A

FILE NAME = I:\17762ACAD\000\1776216\US 4 Bike Lane\07d188.dgn
 DATE/TIME = 7/19/2013 4:49:16