

646.406 DURABLE 4 INCH WHITE LINE, RECESSED POLYUREA
 (ALL LINES WILL INCLUDE EDGE LINE BREAKS AND
 RADIUS FOR TOWN HIGHWAYS)
 U.S. ROUTE 4:
 STA 4+64.64 - STA 6+45.00 DASHED LANE LINE CL
 STA 4+64.64 - STA 7+00.00 DASHED LANE LINE LT
 STA 4+64.64 - STA 7+00.00 EDGE LINE LT & RT
 STA 6+45.00 - STA 7+00.00 DOTTED LANE LINE CL

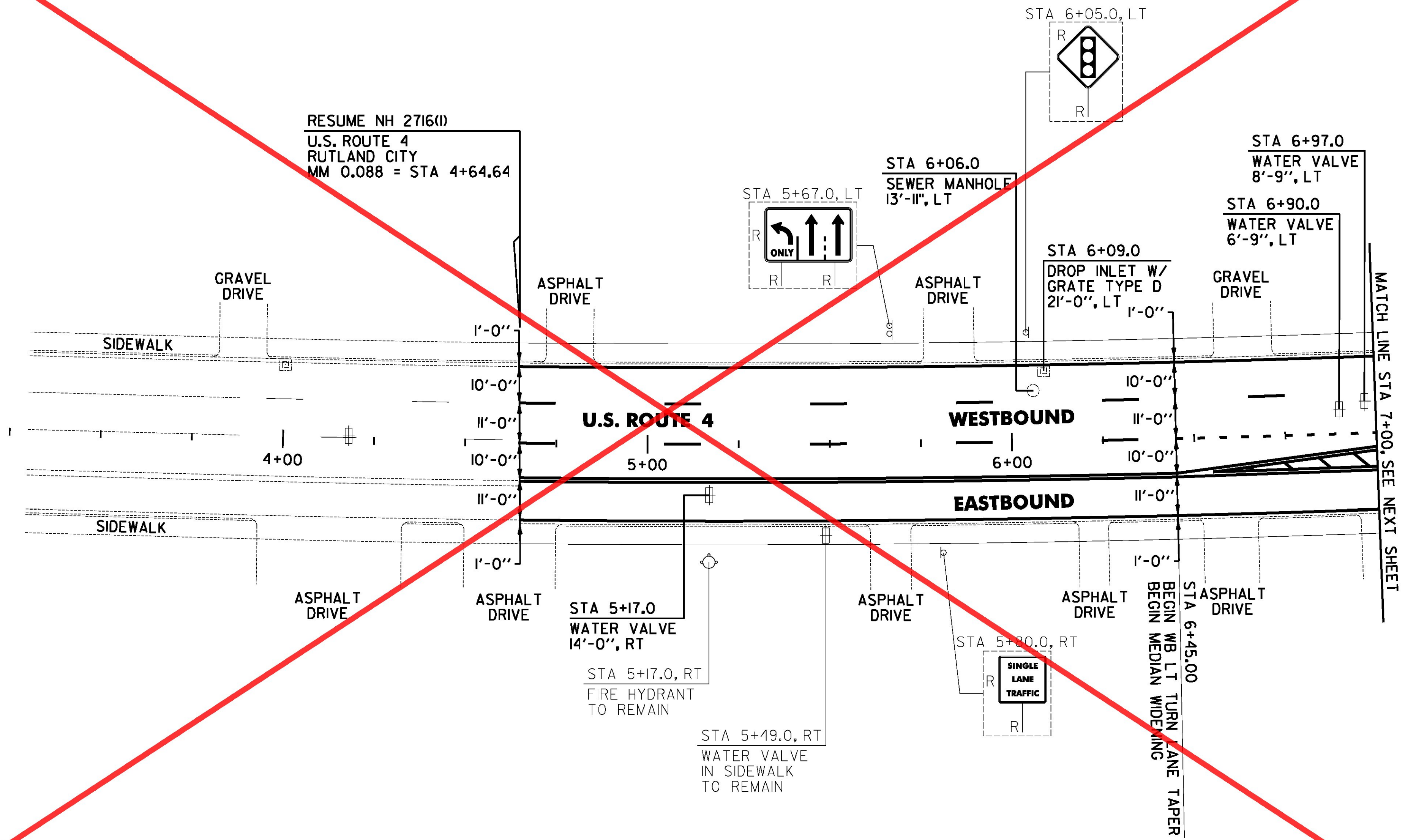
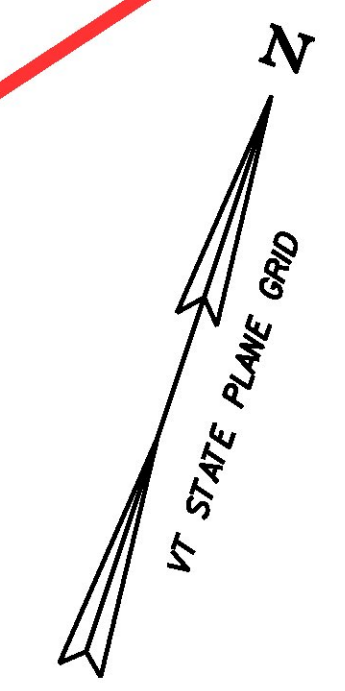
646.602 TEMPORARY 4 INCH WHITE LINE, PAINT
 (ALL LINES WILL INCLUDE EDGE LINE BREAKS AND
 RADIUS FOR TOWN HIGHWAYS)
 U.S. ROUTE 4:
 STA 4+64.64 - STA 6+45.00 DASHED LANE LINE CL
 STA 4+64.64 - STA 7+00.00 DASHED LANE LINE LT
 STA 4+64.64 - STA 7+00.00 EDGE LINE LT & RT
 STA 6+45.00 - STA 7+00.00 DOTTED LANE LINE CL

646.416 DURABLE 4 INCH YELLOW LINE, RECESSED POLYUREA
 (ALL LINES WILL INCLUDE C/L BREAKS FOR
 TOWN HIGHWAYS)
 U.S. ROUTE 4:
 STA 4+64.64 - STA 6+45.00 DOUBLE SOLID RT
 STA 6+45.00 - STA 7+00.00 DOUBLE SOLID MEDIAN RT

646.612 TEMPORARY 4 INCH YELLOW LINE, PAINT
 (ALL LINES WILL INCLUDE C/L BREAKS FOR
 TOWN HIGHWAYS)
 U.S. ROUTE 4:
 STA 4+64.64 - STA 6+45.00 DOUBLE SOLID RT
 STA 6+45.00 - STA 7+00.00 DOUBLE SOLID MEDIAN RT

646.456 DURABLE 8 INCH YELLOW LINE, RECESSED POLYUREA
 U.S. ROUTE 4:
 STA 6+45.00 - STA 7+00.00 HATCHED MEDIAN RT

675.50 REMOVING SIGNS
 AS SHOWN - 3



USED ALTERNATE A

NOTE:
 1. THE CONTRACTOR SHALL REHABILITATE THE EXISTING DROP INLETS, CATCH BASINS OR MANHOLES TO A DEPTH AS DIRECTED BY THE ENGINEER. ALL REHABILITATION WORK WILL BE PAID FOR UNDER THE APPLICABLE REHABILITATION ITEM AS DIRECTED BY THE ENGINEER. ALL EXISTING UTILITIES MARKED "TO REMAIN" SHALL NOT BE ALTERED OR REHABILITATED UNLESS DIRECTED OTHERWISE BY THE ENGINEER.

SIGN LEGEND
 R = REMOVE
 S = SALVAGE
 N = NEW
 RET = RETAIN
 B-B = BACK TO BACK
 EXISTING = -----
 NEW = _____
 ⊕ = RETURN TO THE CITY OF RUTLAND

PROJECT LAYOUT SHEET #14 ALTERNATE B

PROJECT NAME: RUTLAND CITY	FILE NAME: p07d188.dgn	PLOT DATE: 7/19/2013
PROJECT NUMBER: NH 2716(1)	PROJECT LEADER: D.E.G.	DRAWN BY: M.E.D.
	DESIGNED BY: M.J.M.	CHECKED BY: D.E.G.
	IPARM FILE: 07d18814B.1	SHEET 184 OF 392

604.412, 604.415, 604.418 REHAB. DROP INLETS, CATCH BASINS, OR MANHOLES CLASS I, II OR III (SEE NOTE 1)
 U.S. ROUTE 4:
 STA 6+09.0 LT

604.42 CHANGING ELEVATION OF SEWER MANHOLES
 U.S. ROUTE 4:
 STA 6+06.0 LT

629.20 ADJUST ELEVATION OF VALVE BOX
 U.S. ROUTE 4:
 STA 5+17.0 RT
 STA 6+90.0 LT
 STA 6+97.0 LT

FILE NAME = I:\177625\ACADD\WST\NH 2716\US 4 Btch Lema\07d188.dwg - r.u. 14B.dgn
 DATE/TIME = 7/19/2013 4:49:16
 USER =