

646.406 DURABLE 4 INCH WHITE LINE, RECESSED POLYUREA (ALL LINES WILL INCLUDE EDGE LINE BREAKS AND RADIUS FOR TOWN HIGHWAYS)
 U.S. ROUTE 4:
 STA 49+00.00 - STA 55+00.00 DASHED LANE LINE LT
 STA 49+00.00 - STA 55+00.00 DASHED LANE LINE RT
 STA 49+00.00 - STA 55+00.00 EDGE LINE LT & RT
 STA 49+00.00 - STA 49+70.00 SOLID LANE LINE RT
 STA 50+21.28 SOLID LANE LINE RT, STRATTON ROAD
 STA 51+03.00 - STA 52+00.00 SOLID LANE LINE LT
 STA 52+00.00 - STA 53+00.00 DOTTED LANE LINE LT

646.602 TEMPORARY 4 INCH WHITE LINE, PAINT (ALL LINES WILL INCLUDE EDGE LINE BREAKS AND RADIUS FOR TOWN HIGHWAYS)
 U.S. ROUTE 4:
 STA 49+00.00 - STA 55+00.00 DASHED LANE LINE LT
 STA 49+00.00 - STA 55+00.00 DASHED LANE LINE RT
 STA 49+00.00 - STA 55+00.00 EDGE LINE LT & RT
 STA 49+00.00 - STA 49+70.00 SOLID LANE LINE RT
 STA 50+21.28 SOLID LANE LINE RT, STRATTON ROAD
 STA 51+03.00 - STA 52+00.00 SOLID LANE LINE LT
 STA 52+00.00 - STA 53+00.00 DOTTED LANE LINE LT

646.416 DURABLE 4 INCH YELLOW LINE, RECESSED POLYUREA (ALL LINES WILL INCLUDE C/L BREAKS FOR TOWN HIGHWAYS)
 U.S. ROUTE 4:
 STA 49+00.00 - STA 49+69.00 DOUBLE SOLID LT
 STA 50+21.28 DOUBLE SOLID RT, STRATTON ROAD
 STA 51+03.00 - STA 53+00.00 DOUBLE SOLID RT
 STA 53+00.00 - STA 55+00.00 SOLID/DASHED TURN LANE LINES LT/RT

646.612 TEMPORARY 4 INCH YELLOW LINE, PAINT (ALL LINES WILL INCLUDE C/L BREAKS FOR TOWN HIGHWAYS)
 U.S. ROUTE 4:
 STA 49+00.00 - STA 49+69.00 DOUBLE SOLID LT
 STA 50+21.28 DOUBLE SOLID RT, STRATTON ROAD
 STA 51+03.00 - STA 53+00.00 DOUBLE SOLID RT
 STA 53+00.00 - STA 55+00.00 SOLID/DASHED TURN LANE LINES LT/RT

646.487 DURABLE 24 INCH STOP BAR, RECESSED TYPE I TAPE
 U.S. ROUTE 4:
 STA 49+70.00 LT/RT
 STA 50+21.28 RT, STRATTON ROAD
 STA 51+02.00 LT/RT

646.682 TEMPORARY 24 INCH STOP BAR, PAINT
 U.S. ROUTE 4:
 STA 49+70.00 LT/RT
 STA 50+21.28 RT, STRATTON ROAD
 STA 51+02.00 LT/RT

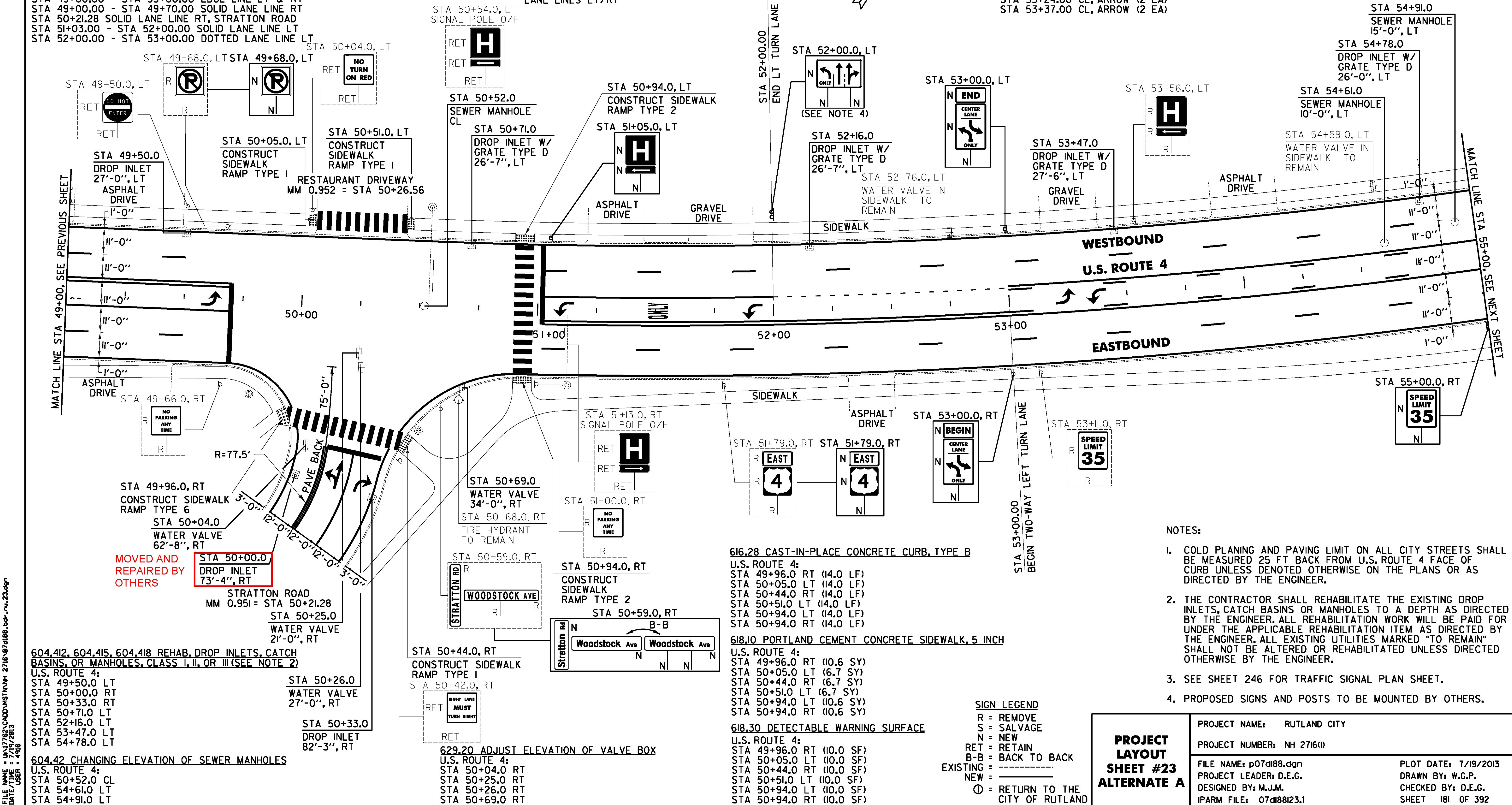
646.491 DURABLE LETTER OR SYMBOL, TYPE I TAPE
 U.S. ROUTE 4:
 STA 49+62.00 CL, ARROW (1EA)
 STA 50+21.28 RT, STRATTON ROAD ARROW (1 EA)
 STA 50+21.28 RT, STRATTON ROAD ARROW (2 EA)
 STA 51+11.00 CL, ARROW (1EA)
 STA 51+51.00 CL, "O,N,L,Y" (4 EA)
 STA 51+91.00 CL, ARROW (1EA)
 STA 53+24.00 CL, ARROW (1EA)
 STA 53+37.00 CL, ARROW (1EA)

646.501 DURABLE CROSSWALK MARKING, TYPE I TAPE
 U.S. ROUTE 4:
 STA 50+21.28 RT, STRATTON ROAD
 STA 50+26.56 LT, RESTAURANT DRIVEWAY
 STA 50+94.00 LT/RT

646.702 TEMPORARY CROSSWALK MARKING, PAINT
 U.S. ROUTE 4:
 STA 50+21.28 RT, STRATTON ROAD
 STA 50+26.56 LT, RESTAURANT DRIVEWAY
 STA 50+94.00 LT/RT

646.692 TEMPORARY LETTER OR SYMBOL, PAINT
 U.S. ROUTE 4:
 STA 49+62.00 CL, ARROW (2 EA)
 STA 50+21.28 RT, STRATTON ROAD, ARROW (2 EA)
 STA 50+21.28 RT, STRATTON ROAD ARROW (4 EA)
 STA 51+11.00 CL, ARROW (2 EA)
 STA 51+91.00 CL, ARROW (2 EA)
 STA 53+24.00 CL, ARROW (2 EA)
 STA 53+37.00 CL, ARROW (2 EA)

675.50 REMOVING SIGNS AS SHOWN - 10



- NOTES:
1. COLD PLANING AND PAVING LIMIT ON ALL CITY STREETS SHALL BE MEASURED 25 FT BACK FROM U.S. ROUTE 4 FACE OF CURB UNLESS DENOTED OTHERWISE ON THE PLANS OR AS DIRECTED BY THE ENGINEER.
 2. THE CONTRACTOR SHALL REHABILITATE THE EXISTING DROP INLETS, CATCH BASINS OR MANHOLES TO A DEPTH AS DIRECTED BY THE ENGINEER. ALL REHABILITATION WORK WILL BE PAID FOR UNDER THE APPLICABLE REHABILITATION ITEM AS DIRECTED BY THE ENGINEER. ALL EXISTING UTILITIES MARKED "TO REMAIN" SHALL NOT BE ALTERED OR REHABILITATED UNLESS DIRECTED OTHERWISE BY THE ENGINEER.
 3. SEE SHEET 246 FOR TRAFFIC SIGNAL PLAN SHEET.
 4. PROPOSED SIGNS AND POSTS TO BE MOUNTED BY OTHERS.

SIGN LEGEND
 R = REMOVE
 S = SALVAGE
 N = NEW
 RET = RETAIN
 B-B = BACK TO BACK
 EXISTING = -----
 NEW = _____
 ⊕ = RETURN TO THE CITY OF RUTLAND

PROJECT LAYOUT SHEET #23 ALTERNATE A	PROJECT NAME: RUTLAND CITY	PLOT DATE: 7/19/2013
	PROJECT NUMBER: NH 2716(1)	DRAWN BY: W.G.P.
	FILE NAME: p07d188.dgn	DESIGNED BY: M.J.M.
	IPARM FILE: 07d188i23.1	CHECKED BY: D.E.G.
		SHEET 181 OF 392

FILE NAME: I:\17762ACADD\17762ACADD\17762ACADD.dgn
 DATE/TIME: 7/19/2013 10:49:16 AM
 USER: W.G.P.