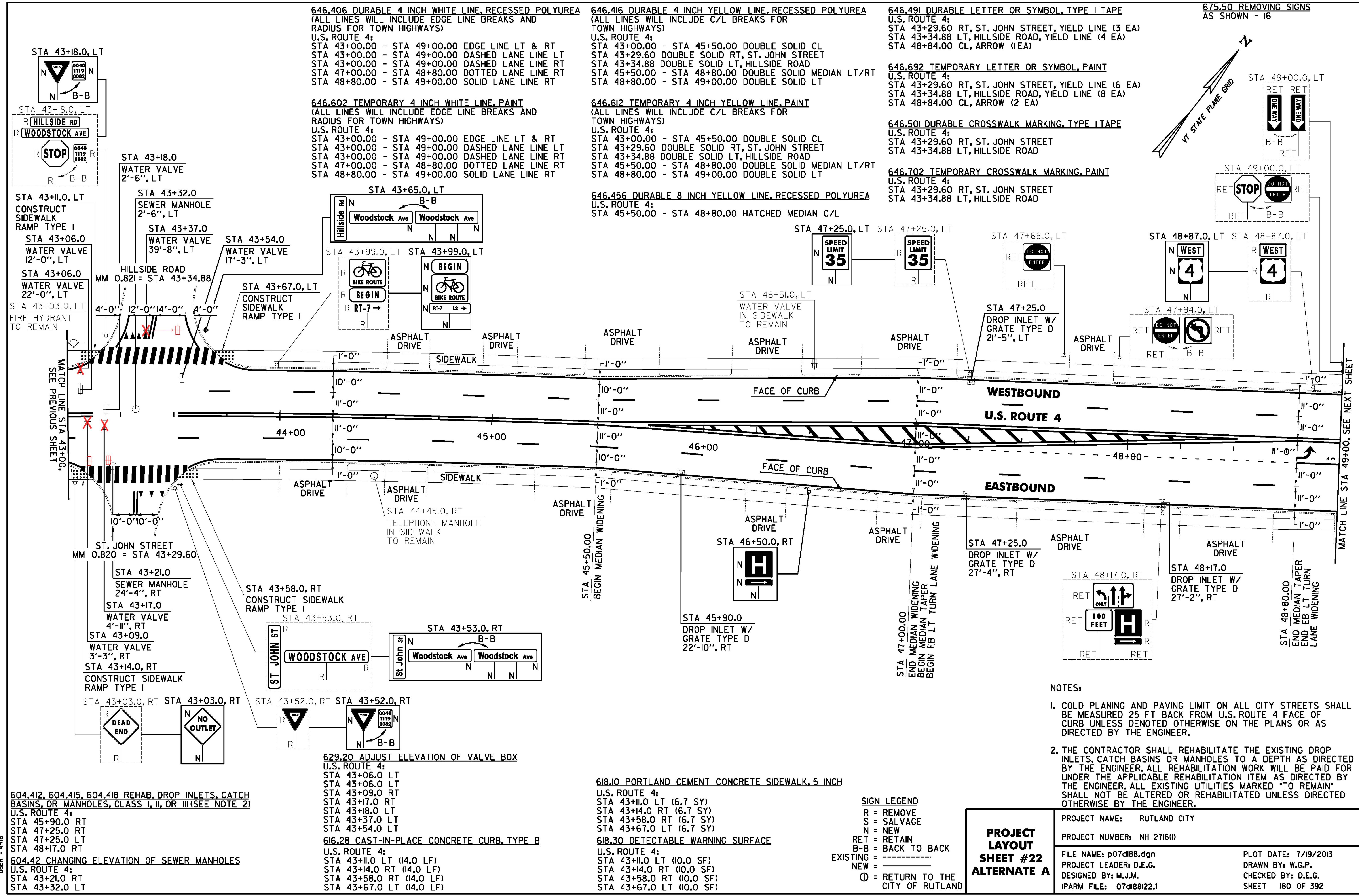


FILE NAME: I:\17765\CAD\DWG\17765\17765.dwg
 DATE/TIME: 7/19/2013 10:49:16
 USER: 4916



646.406 DURABLE 4 INCH WHITE LINE, RECESSED POLYUREA
 (ALL LINES WILL INCLUDE EDGE LINE BREAKS AND RADIUS FOR TOWN HIGHWAYS)
 U.S. ROUTE 4:
 STA 43+00.00 - STA 49+00.00 EDGE LINE LT & RT
 STA 43+00.00 - STA 49+00.00 DASHED LANE LINE LT
 STA 43+00.00 - STA 49+00.00 DASHED LANE LINE RT
 STA 47+00.00 - STA 48+80.00 DOTTED LANE LINE RT
 STA 48+80.00 - STA 49+00.00 SOLID LANE LINE RT

646.602 TEMPORARY 4 INCH WHITE LINE, PAINT
 (ALL LINES WILL INCLUDE EDGE LINE BREAKS AND RADIUS FOR TOWN HIGHWAYS)
 U.S. ROUTE 4:
 STA 43+00.00 - STA 49+00.00 EDGE LINE LT & RT
 STA 43+00.00 - STA 49+00.00 DASHED LANE LINE LT
 STA 43+00.00 - STA 49+00.00 DASHED LANE LINE RT
 STA 47+00.00 - STA 48+80.00 DOTTED LANE LINE RT
 STA 48+80.00 - STA 49+00.00 SOLID LANE LINE RT

646.416 DURABLE 4 INCH YELLOW LINE, RECESSED POLYUREA
 (ALL LINES WILL INCLUDE C/L BREAKS FOR TOWN HIGHWAYS)
 U.S. ROUTE 4:
 STA 43+00.00 - STA 45+50.00 DOUBLE SOLID CL
 STA 43+29.60 DOUBLE SOLID RT, ST. JOHN STREET
 STA 43+34.88 DOUBLE SOLID LT, HILLSIDE ROAD
 STA 45+50.00 - STA 48+80.00 DOUBLE SOLID MEDIAN LT/RT
 STA 48+80.00 - STA 49+00.00 DOUBLE SOLID LT

646.612 TEMPORARY 4 INCH YELLOW LINE, PAINT
 (ALL LINES WILL INCLUDE C/L BREAKS FOR TOWN HIGHWAYS)
 U.S. ROUTE 4:
 STA 43+00.00 - STA 45+50.00 DOUBLE SOLID CL
 STA 43+29.60 DOUBLE SOLID RT, ST. JOHN STREET
 STA 43+34.88 DOUBLE SOLID LT, HILLSIDE ROAD
 STA 45+50.00 - STA 48+80.00 DOUBLE SOLID MEDIAN LT/RT
 STA 48+80.00 - STA 49+00.00 DOUBLE SOLID LT

646.491 DURABLE LETTER OR SYMBOL, TYPE I TAPE
 U.S. ROUTE 4:
 STA 43+29.60 RT, ST. JOHN STREET, YIELD LINE (3 EA)
 STA 43+34.88 LT, HILLSIDE ROAD, YIELD LINE (4 EA)
 STA 48+84.00 CL, ARROW (1EA)

646.692 TEMPORARY LETTER OR SYMBOL, PAINT
 U.S. ROUTE 4:
 STA 43+29.60 RT, ST. JOHN STREET, YIELD LINE (6 EA)
 STA 43+34.88 LT, HILLSIDE ROAD, YIELD LINE (8 EA)
 STA 48+84.00 CL, ARROW (2 EA)

646.501 DURABLE CROSSWALK MARKING, TYPE I TAPE
 U.S. ROUTE 4:
 STA 43+29.60 RT, ST. JOHN STREET
 STA 43+34.88 LT, HILLSIDE ROAD

646.702 TEMPORARY CROSSWALK MARKING, PAINT
 U.S. ROUTE 4:
 STA 43+29.60 RT, ST. JOHN STREET
 STA 43+34.88 LT, HILLSIDE ROAD

675.50 REMOVING SIGNS
 AS SHOWN - 16

604.412, 604.415, 604.418 REHAB. DROP INLETS, CATCH BASINS, OR MANHOLES, CLASS I, II, OR III (SEE NOTE 2)
 U.S. ROUTE 4:
 STA 45+90.0 RT
 STA 47+25.0 RT
 STA 47+25.0 LT
 STA 48+17.0 RT

604.42 CHANGING ELEVATION OF SEWER MANHOLES
 U.S. ROUTE 4:
 STA 43+21.0 RT
 STA 43+32.0 LT

629.20 ADJUST ELEVATION OF VALVE BOX
 U.S. ROUTE 4:
 STA 43+06.0 LT
 STA 43+06.0 RT
 STA 43+09.0 RT
 STA 43+17.0 RT
 STA 43+18.0 LT
 STA 43+37.0 LT
 STA 43+54.0 LT

616.28 CAST-IN-PLACE CONCRETE CURB, TYPE B
 U.S. ROUTE 4:
 STA 43+10.0 LT (14.0 LF)
 STA 43+14.0 RT (14.0 LF)
 STA 43+58.0 RT (14.0 LF)
 STA 43+67.0 LT (14.0 LF)

618.10 PORTLAND CEMENT CONCRETE SIDEWALK, 5 INCH
 U.S. ROUTE 4:
 STA 43+10.0 LT (6.7 SY)
 STA 43+14.0 RT (6.7 SY)
 STA 43+58.0 RT (6.7 SY)
 STA 43+67.0 LT (6.7 SY)

618.30 DETECTABLE WARNING SURFACE
 U.S. ROUTE 4:
 STA 43+10.0 LT (10.0 SF)
 STA 43+14.0 RT (10.0 SF)
 STA 43+58.0 RT (10.0 SF)
 STA 43+67.0 LT (10.0 SF)

SIGN LEGEND
 R = REMOVE
 S = SALVAGE
 N = NEW
 RET = RETAIN
 B-B = BACK TO BACK
 EXISTING = -----
 NEW = _____
 ⓪ = RETURN TO THE CITY OF RUTLAND

PROJECT LAYOUT SHEET #22 ALTERNATE A

NOTES:

- COLD PLANING AND PAVING LIMIT ON ALL CITY STREETS SHALL BE MEASURED 25 FT BACK FROM U.S. ROUTE 4 FACE OF CURB UNLESS DENOTED OTHERWISE ON THE PLANS OR AS DIRECTED BY THE ENGINEER.
- THE CONTRACTOR SHALL REHABILITATE THE EXISTING DROP INLETS, CATCH BASINS OR MANHOLES TO A DEPTH AS DIRECTED BY THE ENGINEER. ALL REHABILITATION WORK WILL BE PAID FOR UNDER THE APPLICABLE REHABILITATION ITEM AS DIRECTED BY THE ENGINEER. ALL EXISTING UTILITIES MARKED "TO REMAIN" SHALL NOT BE ALTERED OR REHABILITATED UNLESS DIRECTED OTHERWISE BY THE ENGINEER.

PROJECT NAME: RUTLAND CITY	FILE NAME: p07d188.dgn	PLOT DATE: 7/19/2013
PROJECT NUMBER: NH 2716(1)	PROJECT LEADER: D.E.G.	DRAWN BY: W.G.P.
	DESIGNED BY: M.J.M.	CHECKED BY: D.E.G.
	IPARM FILE: 07d18822.1	SHEET 180 OF 392