

**646.406 DURABLE 4 INCH WHITE LINE, RECESSED POLYUREA**  
 (ALL LINES WILL INCLUDE EDGE LINE BREAKS AND RADIUS FOR TOWN HIGHWAYS)  
 U.S. ROUTE 7:  
 STA 48+00.00 - STA 50+50.00 DASHED LANE LINE LT  
 STA 48+00.00 - STA 50+50.00 DASHED LANE LINE RT  
 STA 48+00.00 - STA 50+50.00 EDGE LINE LT & RT  
 STA 48+45.00 - STA 49+28.50 SOLID LANE LINE RT  
 STA 49+63.20 SOLID LANE LINE LT, MADISON STREET

**646.602 TEMPORARY 4 INCH WHITE LINE, PAINT**  
 (ALL LINES WILL INCLUDE EDGE LINE BREAKS AND RADIUS FOR TOWN HIGHWAYS)  
 U.S. ROUTE 7:  
 STA 48+00.00 - STA 50+50.00 DASHED LANE LINE LT  
 STA 48+00.00 - STA 50+50.00 DASHED LANE LINE RT  
 STA 48+00.00 - STA 50+50.00 EDGE LINE LT & RT  
 STA 48+45.00 - STA 49+28.50 SOLID LANE LINE RT  
 STA 49+63.20 SOLID LANE LINE LT, MADISON STREET

**646.416 DURABLE 4 INCH YELLOW LINE, RECESSED POLYUREA**  
 (ALL LINES WILL INCLUDE C/L BREAKS FOR TOWN HIGHWAYS)  
 U.S. ROUTE 7:  
 STA 48+00.00 - STA 49+28.50 DOUBLE SOLID LT  
 STA 49+63.20 DOUBLE SOLID LT, MADISON STREET  
 STA 49+90.00 - STA 50+50.00 DOUBLE SOLID MEDIAN CL/RT

**646.612 TEMPORARY 4 INCH YELLOW LINE, PAINT**  
 (ALL LINES WILL INCLUDE C/L BREAKS FOR TOWN HIGHWAYS)  
 U.S. ROUTE 7:  
 STA 48+00.00 - STA 49+28.50 DOUBLE SOLID LT  
 STA 49+63.20 DOUBLE SOLID LT, MADISON STREET  
 STA 49+90.00 - STA 50+50.00 DOUBLE SOLID MEDIAN CL/RT

**646.456 DURABLE 8 INCH YELLOW LINE, RECESSED POLYUREA**  
 U.S. ROUTE 7:  
 STA 49+90.00 - STA 50+50.00 HATCHED MEDIAN CL/RT

**646.487 DURABLE 24 INCH STOP BAR, RECESSED TYPE I TAPE**  
 U.S. ROUTE 7:  
 STA 49+29.50 RT  
 STA 49+63.20 LT, MADISON STREET  
 STA 50+37.00 LT

**646.682 TEMPORARY 24 INCH STOP BAR, PAINT**  
 U.S. ROUTE 7:  
 STA 49+29.50 RT  
 STA 49+63.20 LT, MADISON STREET  
 STA 50+37.00 LT

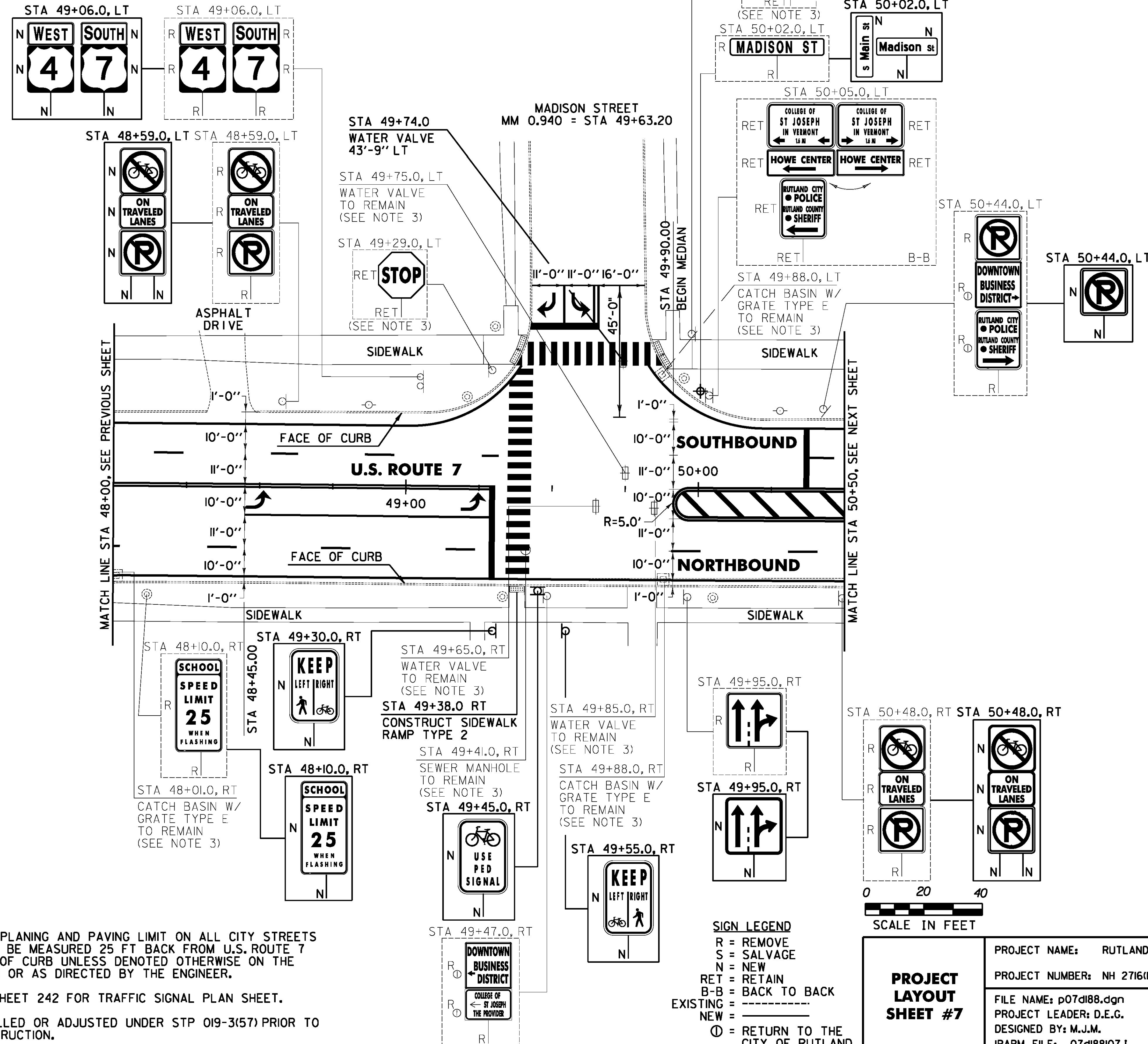
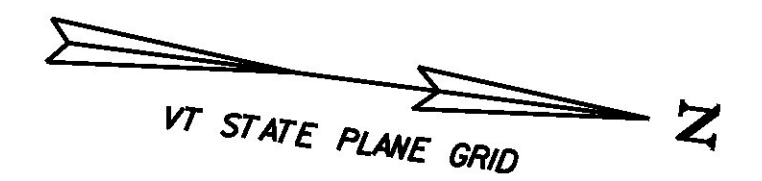
**646.491 DURABLE LETTER OR SYMBOL, TYPE I TAPE**  
 U.S. ROUTE 7:  
 STA 48+49.17 RT, ARROW (1EA)  
 STA 49+21.75 RT, ARROW (1EA)  
 STA 49+63.20 LT, MADISON STREET, ARROW (1EA)  
 STA 49+63.20 LT, MADISON STREET, ARROW (1EA)

**646.692 TEMPORARY LETTER OR SYMBOL, PAINT**  
 U.S. ROUTE 7:  
 STA 48+49.17 RT, ARROW (2 EA)  
 STA 49+21.75 RT, ARROW (2 EA)  
 STA 49+63.20 LT, MADISON STREET, ARROW (2 EA)  
 STA 49+63.20 LT, MADISON STREET, ARROW (2 EA)

**646.501 DURABLE CROSSWALK MARKING, TYPE I TAPE**  
 U.S. ROUTE 7:  
 STA 49+40.00 LT/RT  
 STA 49+63.20 LT, MADISON STREET

**646.702 TEMPORARY CROSSWALK MARKING, PAINT**  
 U.S. ROUTE 7:  
 STA 49+40.00 LT/RT  
 STA 49+63.20 LT, MADISON STREET

**675.50 REMOVING SIGNS**  
 AS SHOWN - 18



**616.28 CAST-IN-PLACE CONCRETE CURB, TYPE B**  
 U.S. ROUTE 7:  
 STA 49+38.0 RT (14.0 LF)

**618.10 PORTLAND CEMENT CONCRETE SIDEWALK, 5 INCH**  
 U.S. ROUTE 7:  
 STA 49+38.0 RT (10.6 SY)

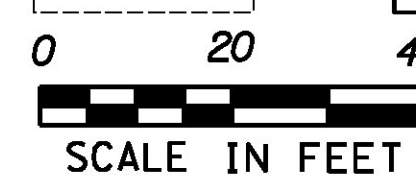
**618.30 DETECTABLE WARNING SURFACE**  
 U.S. ROUTE 7:  
 STA 49+38.0 RT (10.0 SY)

**629.20 ADJUST ELEVATION OF VALVE BOX**  
 U.S. ROUTE 7:  
 STA 49+74.0 LT

**NOTES:**

- COLD PLANING AND PAVING LIMIT ON ALL CITY STREETS SHALL BE MEASURED 25 FT BACK FROM U.S. ROUTE 7 FACE OF CURB UNLESS DENOTED OTHERWISE ON THE PLANS OR AS DIRECTED BY THE ENGINEER.
- SEE SHEET 242 FOR TRAFFIC SIGNAL PLAN SHEET.
- INSTALLED OR ADJUSTED UNDER STP 019-3(57) PRIOR TO CONSTRUCTION.

- SIGN LEGEND**
- R = REMOVE
  - S = SALVAGE
  - N = NEW
  - RET = RETAIN
  - B-B = BACK TO BACK
  - EXISTING = - - - - -
  - NEW = \_\_\_\_\_
  - ⊙ = RETURN TO THE CITY OF RUTLAND



<b>PROJECT LAYOUT SHEET #7</b>	PROJECT NAME: RUTLAND CITY	PLOT DATE: 7/19/2013
	PROJECT NUMBER: NH 2716(1)	DRAWN BY: W.G.P.
	FILE NAME: p07d188.dgn	DESIGNED BY: D.E.G.
	PROJECT LEADER: D.E.G.	CHECKED BY: D.E.G.
	IPARM FILE: 07d18807.1	SHEET 165 OF 392

FILE NAME: I:\17765\CA000\17765\NH\2716\07d188.dgn  
 DATE/TIME: 7/19/2013 4:49:16  
 USER: