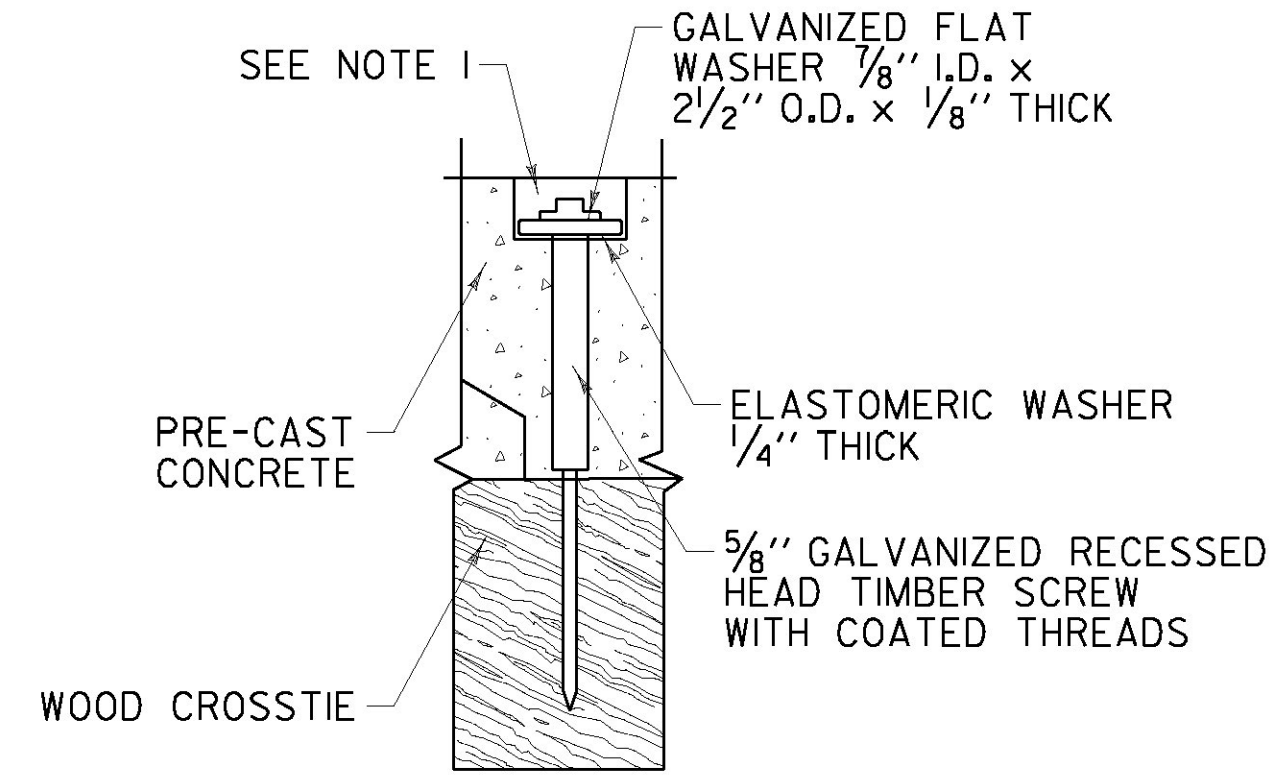
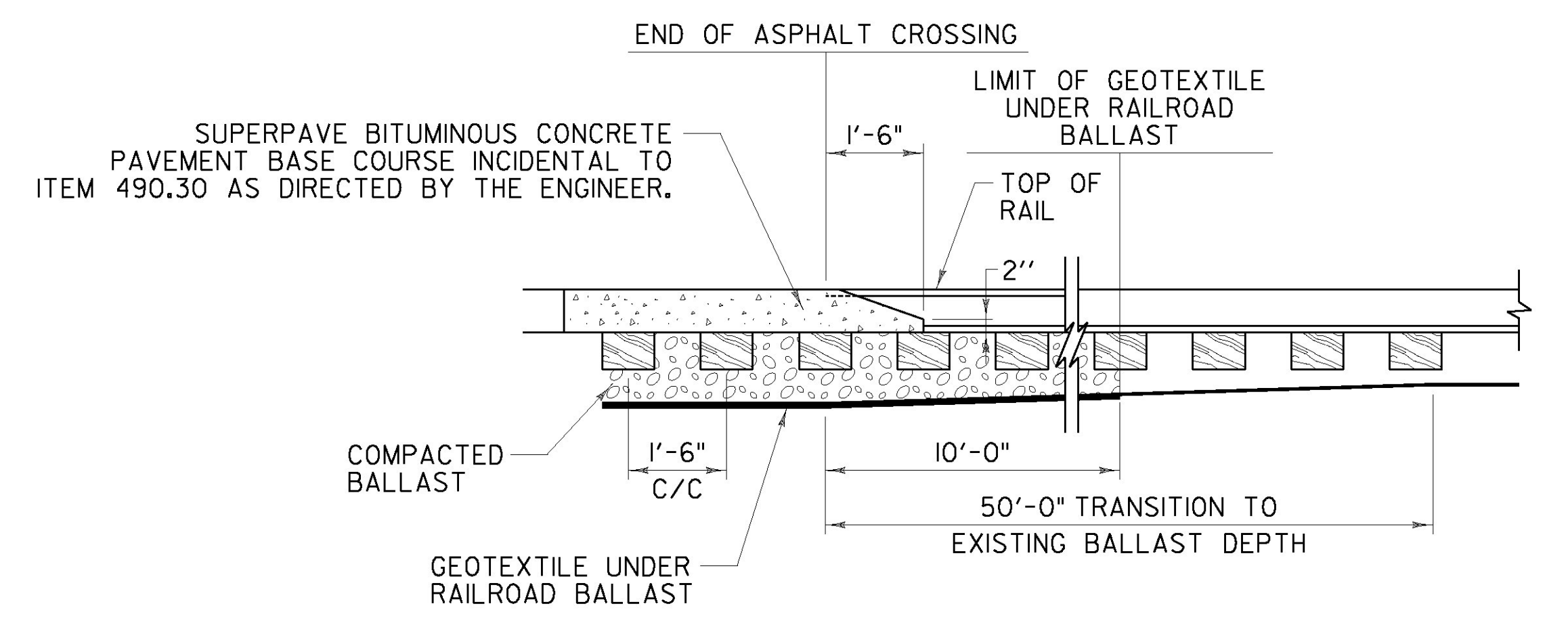


**SECTION VIEW**

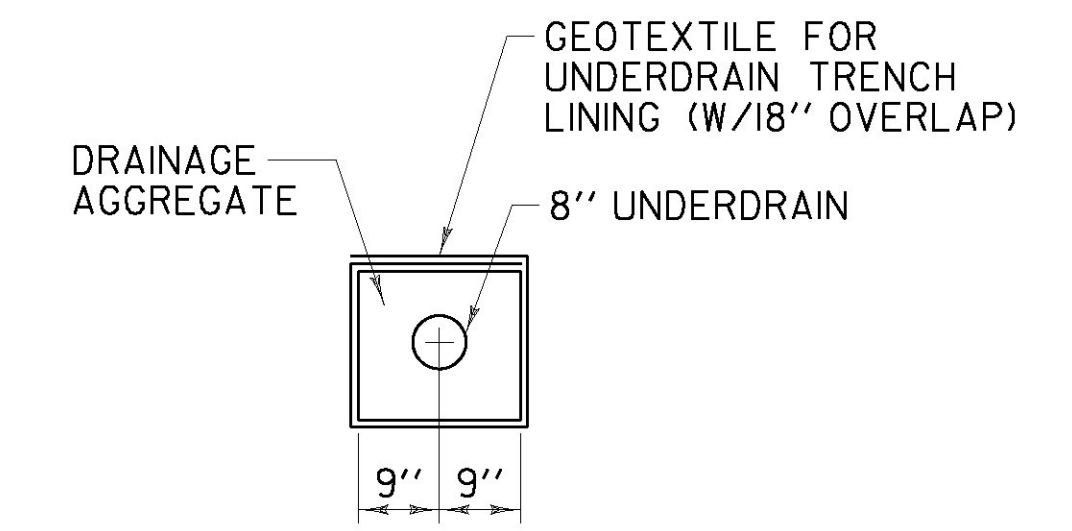


**SCREW DETAIL**

NOTE:  
 I. CONTRACTOR SHALL FILL TO THE TOP OF CONCRETE PANEL WITH SIKAFLEX OR EQUIVALENT POLYURETHANE SEALANT AS DIRECTED BY THE ENGINEER; PAYMENT SHALL BE INCIDENTAL TO ITEM 900.645 SPECIAL PROVISION (PRECAST CONCRETE PANEL GRADE CROSSING SURFACE) (AARDOT 851-294L).

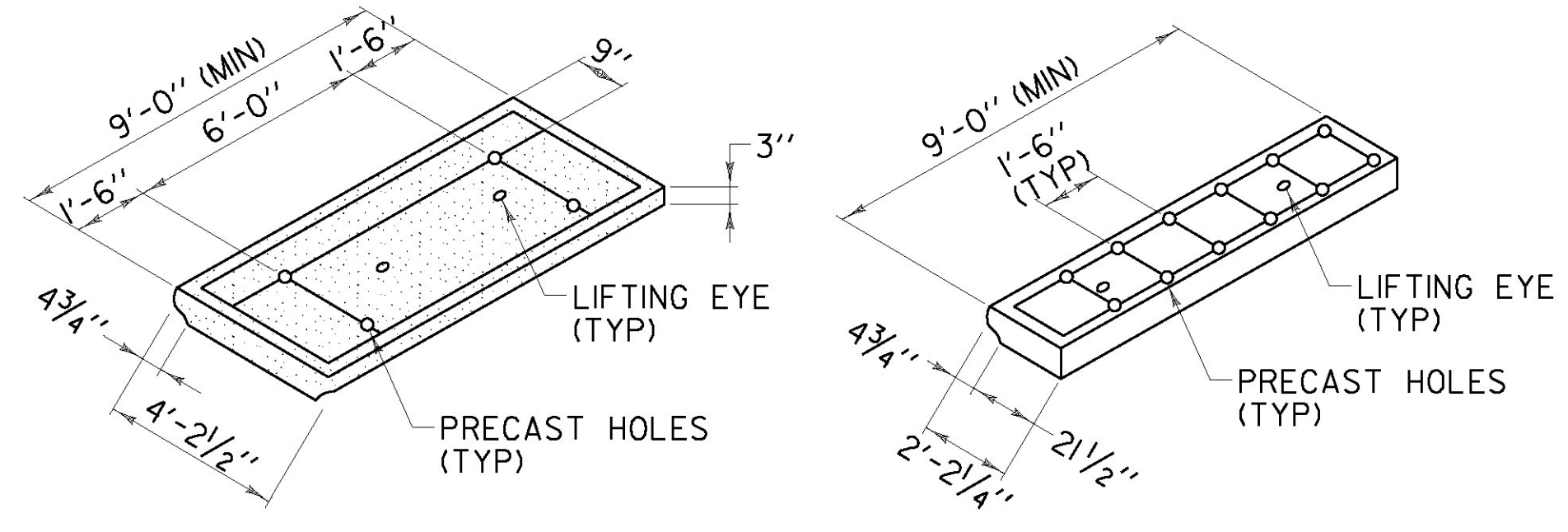


**END TREATMENT DETAIL FOR ASPHALT GRADE CROSSING**



**CROSS SECTION UNDERDRAIN WITH GEOTEXTILE**

(SEE NOTE 17 ON SHEET 129)

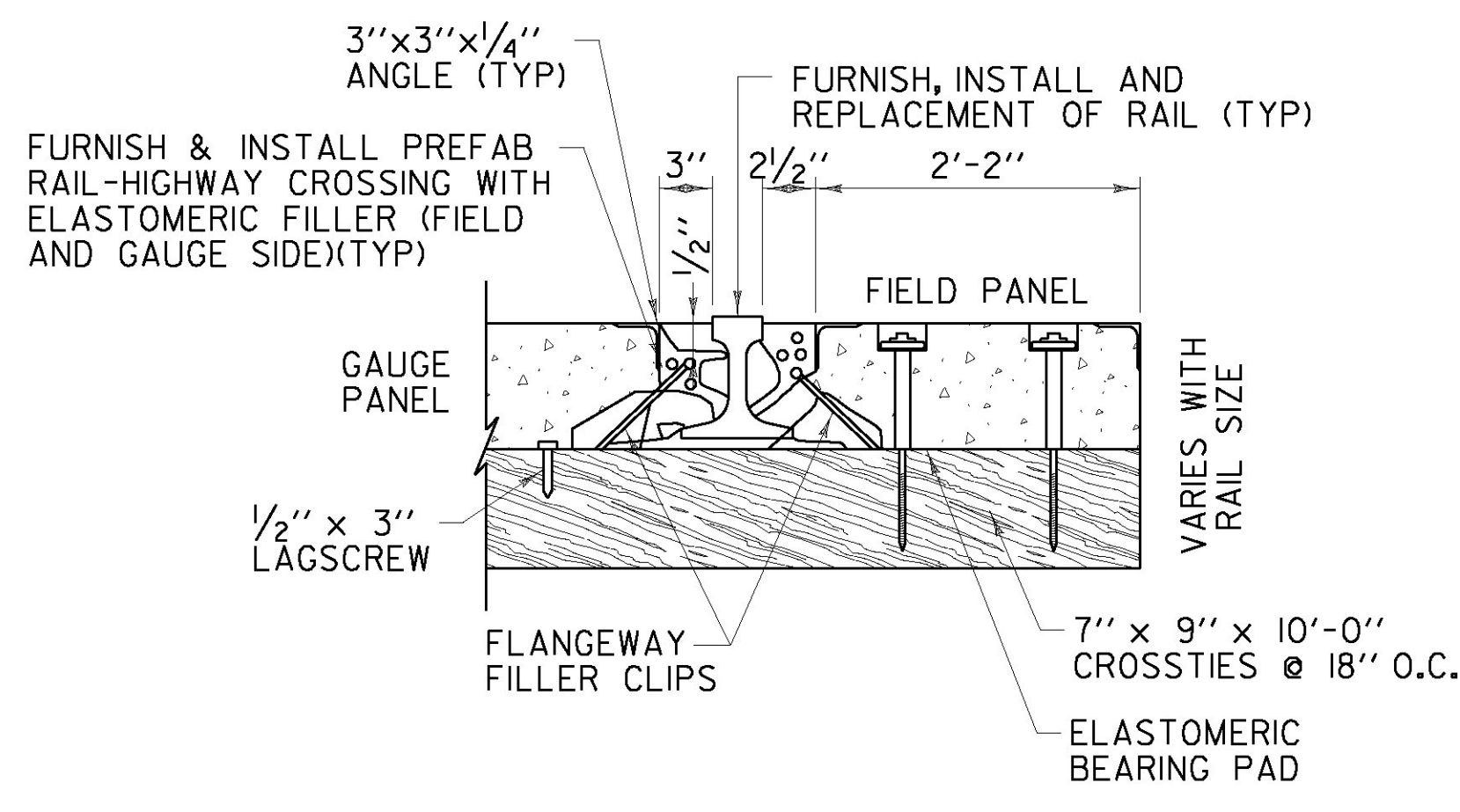


**ISOMETRIC VIEWS**

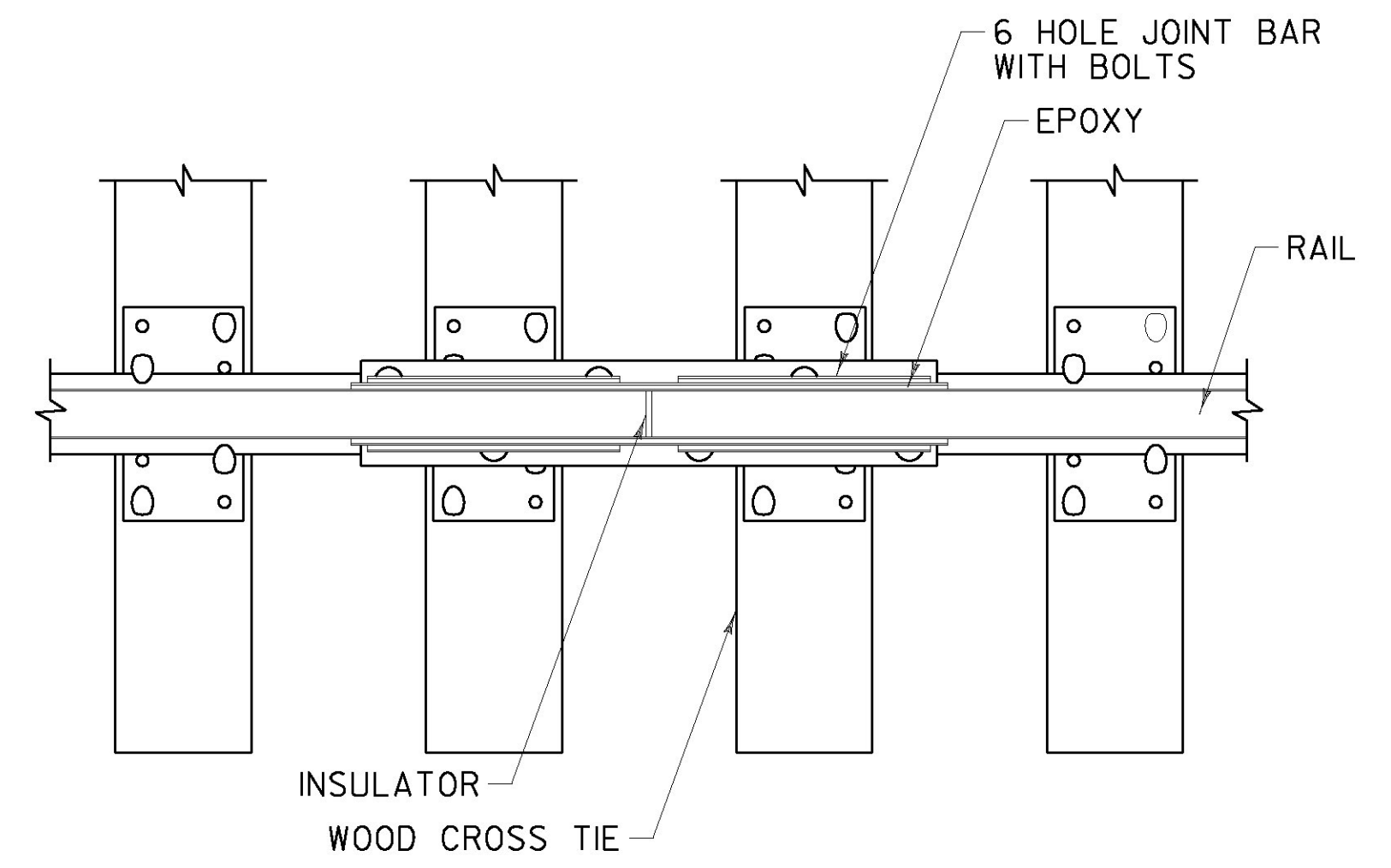
NOTE:  
 I. THE DIMENSIONS SHOWN ARE THE MINIMUM ACCEPTABLE DIMENSIONS FOR THE MANUFACTURING OF THE FIELD AND GAUGE PANELS. THE CONTRACTOR SHALL PROVIDE THE ENGINEER WITH THE DESIRED MANUFACTURER'S DETAILS FOR APPROVAL PRIOR TO ORDERING GAUGE AND FIELD PANELS.

**GAUGE AND FIELD PANEL DETAILS**

MINIMUM PANEL LENGTH	9'-0"
GAUGE PANEL WIDTH	4'-2 1/2"
FIELD PANEL WIDTH	2'-2 1/4"
HEIGHT DETERMINED BY RAIL SIZE	6" TO 8 1/2"
DIMENSION TOLERANCE	± 1/4"
CROSSTIE CENTERS REQUIRED	1'-6"
CROSSTIE LENGTH REQUIRED	10'-0"
CONCRETE	6000 LBS. PSI 28 DAYS MIN.
REINFORCEMENT REBAR	AMERICAN GRADE 72
LIFTING EYES	4000 LBS. CAPACITY EACH
MEETS HS20-44 LOADING SPECS.	



**ENLARGED SECTION AT RAIL IN CONCRETE PANEL CROSSING**



**PLAN VIEW INSULATED JOINT DETAIL (SUSPENDED JOINT)**

NOT TO SCALE

<b>GRADE CROSSING DETAILS SHEET</b>	PROJECT NAME:	RUTLAND CITY - PROCTOR
	PROJECT NUMBER:	STP 2728(I)
	FILE NAME:	p07d282.dgn
	PLOT DATE:	7/22/2013
	PROJECT LEADER:	D.E.G.
	DESIGNED BY:	M.J.M.
	IPARM FILE:	p07d282rrd10.1
	DRAWN BY:	W.G.P.
	CHECKED BY:	D.W.E.
		SHEET 138 OF 392

FILE NAME = I:\171762\ACADD\N\STP 2728\p07d282.rvt.dwg  
 DATE/TIME = 7/22/2013 10:26:13  
 USER = 2676