

646.416 DURABLE 4 INCH YELLOW LINE, RECESSED POLYUREA
 (ALL LINES WILL INCLUDE C/L BREAKS FOR TOWN HIGHWAYS) S=SOLID, D=DASHED
 WEST STREET:
 STA W 1+70.00 - STA W 5+00.00 S - S
 STA W 3+71.00 DOUBLE SOLID RT, GREENS HILL LANE

646.612 TEMPORARY 4 INCH YELLOW LINE, PAINT
 (ALL LINES WILL INCLUDE C/L BREAKS FOR TOWN HIGHWAYS) S=SOLID, D=DASHED
 WEST STREET:
 STA W 1+70.00 - STA W 5+00.00 S - S
 STA W 3+71.00 DOUBLE SOLID RT, GREENS HILL LANE

646.446 DURABLE 8 INCH WHITE LINE, RECESSED POLYUREA
 WEST STREET:
 STA W 3+03.00 - STA W 3+15.00, RT FIRE HYDRANT, NO PARKING

646.487 DURABLE 24 INCH STOP BAR RECESSED, TYPE I TAPE
 WEST STREET:
 STA W 3+71.00 RT, GREENS HILL LANE

646.682 TEMPORARY 24 INCH STOP BAR, PAINT
 WEST STREET:
 STA W 3+71.00 RT, GREENS HILL LANE

646.511 DURABLE RAILROAD CROSSING SYMBOL, TYPE I TAPE
 WEST STREET:
 STA W 4+58.00 LT (1 EA)

646.712 TEMPORARY RAILROAD CROSSING SYMBOL, PAINT
 WEST STREET:
 STA W 4+58.00 LT (2 EA)

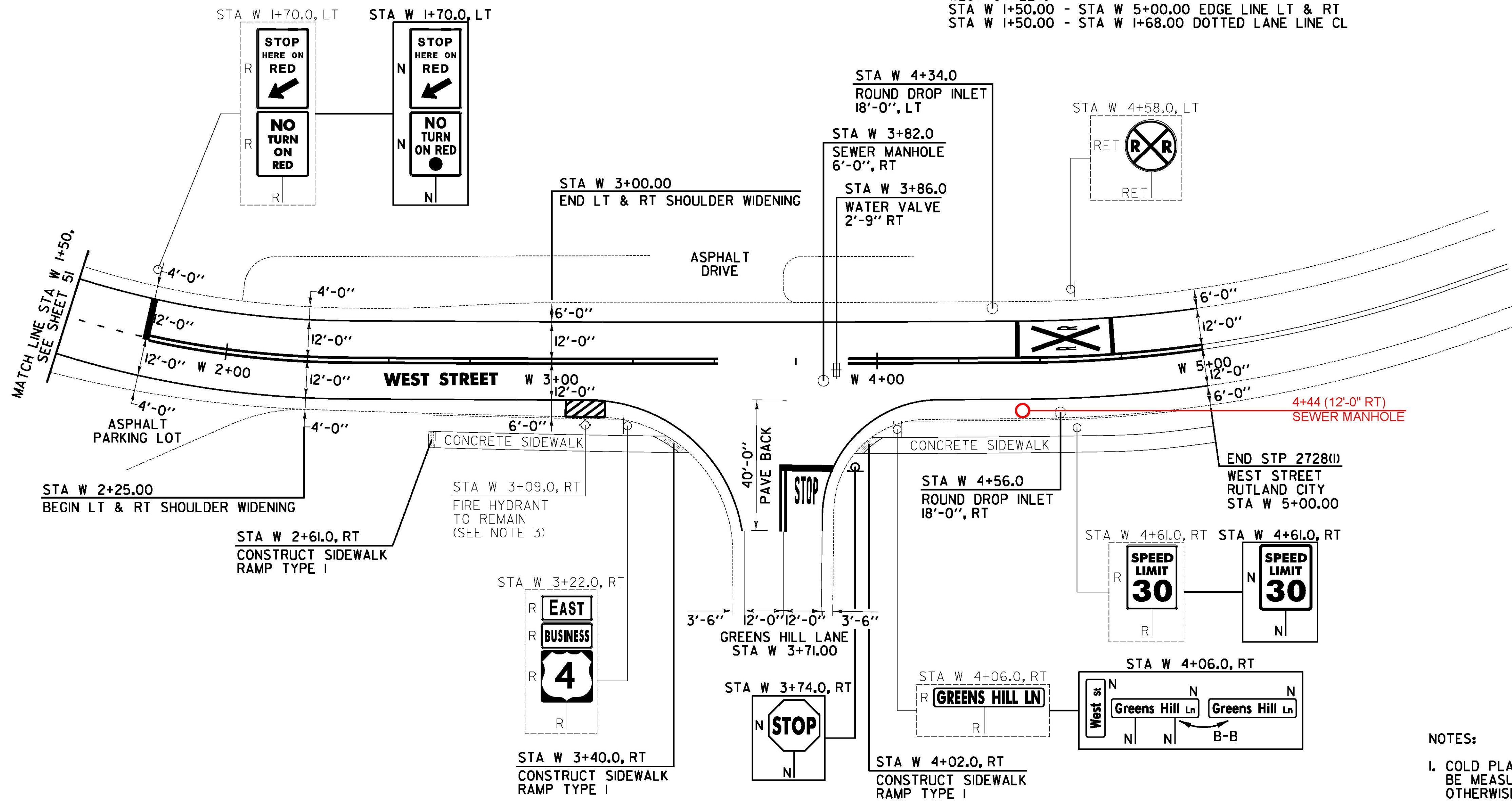
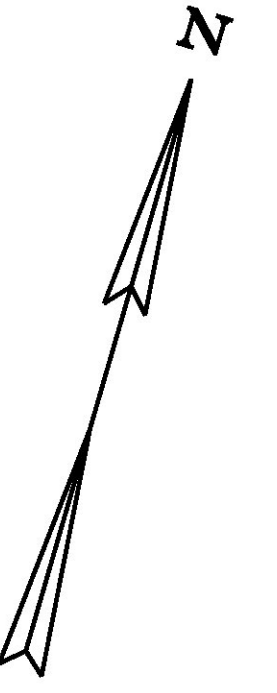
646.491 DURABLE LETTER OR SYMBOL, TYPE I TAPE
 WEST STREET:
 STA W 3+71.00 RT, GREENS HILL LANE, "S,T,O,P" (4 EA)

646.692 TEMPORARY LETTER OR SYMBOL, PAINT
 WEST STREET:
 STA W 3+71.00 RT, GREENS HILL LANE, "S,T,O,P" (8 EA)

646.406 DURABLE 4 INCH WHITE LINE, RECESSED POLYUREA
 (ALL LINES WILL INCLUDE EDGE LINE BREAKS AND RADIUS FOR TOWN HIGHWAYS)
 WEST STREET:
 STA W 1+50.00 - STA W 5+00.00 EDGE LINE LT & RT
 STA W 1+50.00 - STA W 1+68.00 DOTTED LANE LINE CL

646.602 TEMPORARY 4 INCH WHITE LINE, PAINT
 (ALL LINES WILL INCLUDE EDGE LINE BREAKS AND RADIUS FOR TOWN HIGHWAYS)
 WEST STREET:
 STA W 1+50.00 - STA W 5+00.00 EDGE LINE LT & RT
 STA W 1+50.00 - STA W 1+68.00 DOTTED LANE LINE CL

675.50 REMOVING SIGNS AS SHOWN - 7



604.412, 604.415, 604.418 REHAB. DROP INLETS, CATCH BASINS, OR MANHOLES, CLASS I, II, III (SEE NOTE 2)
 WEST STREET:
 STA W 4+34.0 LT
 STA W 4+56.0 RT

604.42 CHANGING ELEVATION OF SEWER MANHOLE
 WEST STREET:
 STA W 3+82.0 RT

616.28 CAST-IN-PLACE CONCRETE CURB, TYPE B
 WEST STREET:
 STA W 2+61.0 RT (14.0 LF)
 STA W 3+40.0 RT (14.0 LF)
 STA W 4+02.0 RT (14.0 LF)

618.10 PORTLAND CEMENT CONCRETE SIDEWALK, 5 INCH
 WEST STREET:
 STA W 2+61.0 RT (6.7 SY)
 STA W 3+40.0 RT (6.7 SY)
 STA W 4+02.0 RT (6.7 SY)

618.30 DETECTABLE WARNING SURFACE
 WEST STREET:
 STA W 2+61.0 RT (10.0 SF)
 STA W 3+40.0 RT (10.0 SF)
 STA W 4+02.0 RT (10.0 SF)

629.20 ADJUST ELEVATION OF VALVE BOX
 WEST STREET:
 STA W 3+86.0 RT

SIGN LEGEND
 R = REMOVE
 S = SALVAGE
 N = NEW
 RET = RETAIN
 B-B = BACK TO BACK
 EXISTING = -----
 NEW = _____
 ⊕ = RETURN TO THE CITY OF RUTLAND

NOTES:

1. COLD PLANING AND PAVING LIMIT ON ALL CITY STREETS SHALL BE MEASURED 25 FT BACK FROM WEST STREET UNLESS DENOTED OTHERWISE ON THE PLANS OR AS DIRECTED BY THE ENGINEER.
2. THE CONTRACTOR SHALL REHABILITATE THE EXISTING DROP INLETS, CATCH BASINS OR MANHOLES TO A DEPTH AS DIRECTED BY THE ENGINEER. ALL REHABILITATION WORK WILL BE PAID FOR UNDER THE APPLICABLE REHABILITATION ITEM AS DIRECTED BY THE ENGINEER. ALL EXISTING UTILITIES MARKED "TO REMAIN" SHALL NOT BE ALTERED OR REHABILITATED UNLESS DIRECTED OTHERWISE BY THE ENGINEER.
3. SEE SHEET 44 FOR FIRE HYDRANT PAVEMENT MARKING DETAIL.

NOT TO SCALE

PROJECT LAYOUT SHEET #20	PROJECT NAME: RUTLAND CITY - PROCTOR
	PROJECT NUMBER: STP 2728(1)
	FILE NAME: p07d282.dgn
	PLOT DATE: 7/19/2013
	PROJECT LEADER: D.E.G.
	DRAWN BY: W.G.P.
	DESIGNED BY: L.M.B.
	CHECKED BY: J.P.S.
	IPARM FILE: p07d282i20.t
	SHEET 65 OF 392

FILE NAME: I:\177653\CAD\00\WST\STP 2728\p07d282.dwg - rml_28.dgn
 DATE/TIME: 7/19/2013 4:49:16
 USER: