

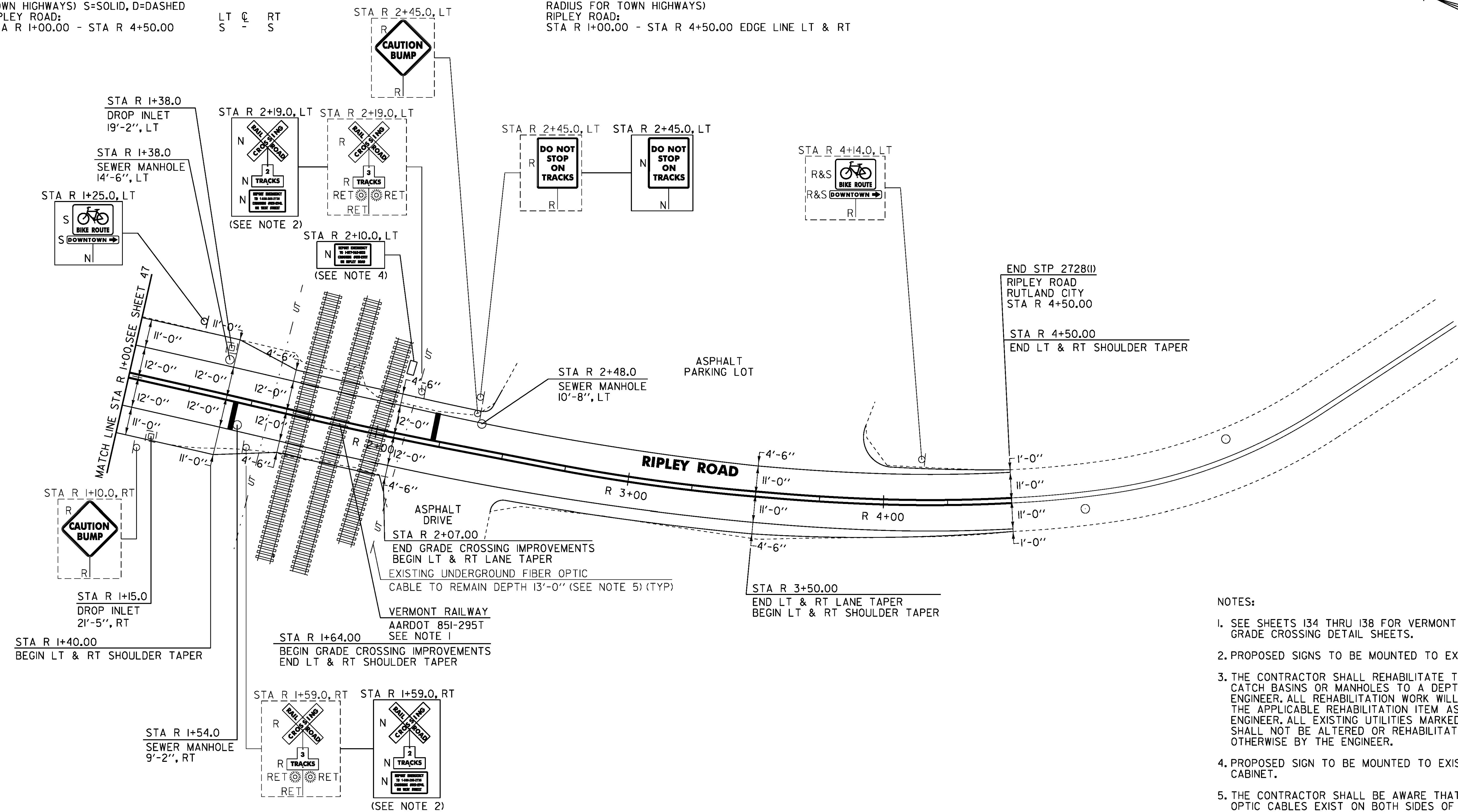
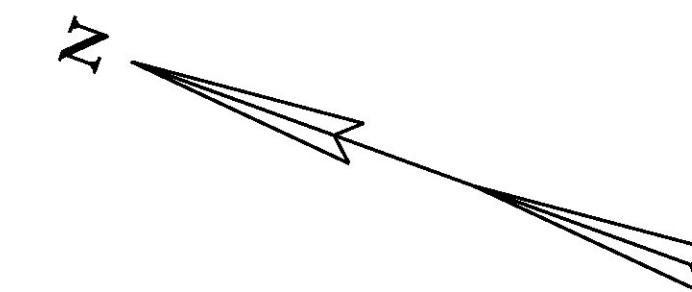
646.416 DURABLE 4 INCH YELLOW LINE, RECESSED POLYUREA
 (ALL LINES WILL INCLUDE C/L BREAKS FOR TOWN HIGHWAYS) S=SOLID, D=DASHED
 RIPLEY ROAD:
 STA R 1+00.00 - STA R 4+50.00 LT S RT S

646.612 TEMPORARY 4 INCH YELLOW LINE, PAINT
 (ALL LINES WILL INCLUDE C/L BREAKS FOR TOWN HIGHWAYS) S=SOLID, D=DASHED
 RIPLEY ROAD:
 STA R 1+00.00 - STA R 4+50.00 LT S RT S

646.406 DURABLE 4 INCH WHITE LINE, RECESSED POLYUREA
 (ALL LINES WILL INCLUDE EDGE LINE BREAKS AND RADIUS FOR TOWN HIGHWAYS)
 RIPLEY ROAD:
 STA R 1+00.00 - STA R 4+50.00 EDGE LINE LT & RT

646.602 TEMPORARY 4 INCH WHITE LINE, PAINT
 (ALL LINES WILL INCLUDE EDGE LINE BREAKS AND RADIUS FOR TOWN HIGHWAYS)
 RIPLEY ROAD:
 STA R 1+00.00 - STA R 4+50.00 EDGE LINE LT & RT

675.50 REMOVING SIGNS AS SHOWN - 9
 675.60 ERECTING SALVAGED SIGNS AS SHOWN - 2



- NOTES:
- SEE SHEETS I34 THRU I38 FOR VERMONT RAILWAY AARDOT 85I-295T GRADE CROSSING DETAIL SHEETS.
 - PROPOSED SIGNS TO BE MOUNTED TO EXISTING SIGNAL MAST.
 - THE CONTRACTOR SHALL REHABILITATE THE EXISTING DROP INLETS, CATCH BASINS OR MANHOLES TO A DEPTH AS DIRECTED BY THE ENGINEER. ALL REHABILITATION WORK WILL BE PAID FOR UNDER THE APPLICABLE REHABILITATION ITEM AS DIRECTED BY THE ENGINEER. ALL EXISTING UTILITIES MARKED "TO REMAIN" SHALL NOT BE ALTERED OR REHABILITATED UNLESS DIRECTED OTHERWISE BY THE ENGINEER.
 - PROPOSED SIGN TO BE MOUNTED TO EXISTING RAILROAD SIGNAL CABINET.
 - THE CONTRACTOR SHALL BE AWARE THAT UNDERGROUND FIBER OPTIC CABLES EXIST ON BOTH SIDES OF THE RIPLEY ROAD GRADE CROSSING AT A DEPTH OF 13'-0" FROM THE EXISTING SURFACE. IT IS THE CONTRACTOR'S RESPONSIBILITY TO LOCATE AND PROTECT THIS CABLE THROUGHOUT CONSTRUCTION.

604.412, 604.415, 604.418 REHAB. DROP INLETS, CATCH BASINS, OR MANHOLES, CLASS I, II, III (SEE NOTE 3)
 RIPLEY ROAD:
 STA R 1+15.0 RT
 STA R 1+38.0 LT

604.42 CHANGING ELEVATION OF SEWER MANHOLE
 RIPLEY ROAD:
 STA R 1+38.0 LT
 STA R 1+54.0 RT
 STA R 2+48.0 LT

SIGN LEGEND
 R = REMOVE
 S = SALVAGE
 N = NEW
 RET = RETAIN
 B-B = BACK TO BACK
 EXISTING = - - - - -
 NEW = _____
 ⊕ = RETURN TO THE CITY OF RUTLAND

PROJECT LAYOUT SHEET #19	PROJECT NAME: RUTLAND CITY - PROCTOR
	PROJECT NUMBER: STP 2728(I)
	FILE NAME: p07d282.dgn
	PLOT DATE: 13-AUG-2013
	PROJECT LEADER: D.E.G.
	DRAWN BY: W.G.P.
	DESIGNED BY: L.M.B.
	CHECKED BY: J.P.S.
	IPARM FILE: p07d282I19.I
	SHEET 64 OF 392