

646.406 DURABLE 4 INCH WHITE LINE, RECESSED POLYUREA  
 (ALL LINES WILL INCLUDE EDGE LINE BREAKS AND RADIUS FOR TOWN HIGHWAYS)  
 U.S. BR 4:  
 STA 96+05.00 - STA 97+05.00 DOTTED LANE LINE RT  
 STA 97+05.00 - STA 99+50.00 SOLID LANE LINE RT

646.416 DURABLE 4 INCH YELLOW LINE, RECESSED POLYUREA  
 (ALL LINES WILL INCLUDE C/L BREAKS FOR TOWN HIGHWAYS) S=SOLID, D=DASHED  
 U.S. BR 4:  
 STA 93+50.00 - STA 95+00.00 DOUBLE SOLID LT  
 STA 97+05.00 - STA 99+50.00 DOUBLE SOLID LT  
 STA 93+77.28 DOUBLE SOLID RT, COURT STREET  
 STA 94+72.32 DOUBLE SOLID LT, LINCOLN AVENUE  
 STA 95+00.00 - STA 97+05.00 DOUBLE SOLID MEDIAN LT/RT  
 STA 97+52.16 DOUBLE SOLID LT, NICHOLS STREET

646.602 TEMPORARY 4 INCH WHITE LINE, PAINT  
 (ALL LINES WILL INCLUDE EDGE LINE BREAKS AND RADIUS FOR TOWN HIGHWAYS)  
 U.S. BR 4:  
 STA 96+05.00 - STA 97+05.00 DOTTED LANE LINE RT  
 STA 97+05.00 - STA 99+50.00 SOLID LANE LINE RT

646.612 TEMPORARY 4 INCH YELLOW LINE, PAINT  
 (ALL LINES WILL INCLUDE C/L BREAKS FOR TOWN HIGHWAYS) S=SOLID, D=DASHED  
 U.S. BR 4:  
 STA 93+50.00 - STA 95+00.00 DOUBLE SOLID LT  
 STA 97+05.00 - STA 99+50.00 DOUBLE SOLID LT  
 STA 93+77.28 DOUBLE SOLID RT, COURT STREET  
 STA 94+72.32 DOUBLE SOLID LT, LINCOLN AVENUE  
 STA 95+00.00 - STA 97+05.00 DOUBLE SOLID MEDIAN LT/RT  
 STA 97+52.16 DOUBLE SOLID LT, NICHOLS STREET

646.456 DURABLE 8 INCH YELLOW LINE, RECESSED POLYUREA  
 U.S. BR 4:  
 STA 95+00.00 - STA 97+05.00 HATCHED MEDIAN LT/RT

646.491 DURABLE LETTER OR SYMBOL, TYPE I TAPE  
 U.S. BR 4:  
 STA 93+77.28 RT, COURT STREET, YIELD MARKING (5 EA)  
 STA 94+72.32 LT, LINCOLN AVENUE, YIELD MARKING (4 EA)  
 STA 97+52.16 LT, NICHOLS STREET, YIELD MARKING (4 EA)  
 STA 97+79.00 LT ARROW (1 EA)  
 STA 98+23.00 LT "O,N,L,Y" (4 EA)  
 STA 98+67.00 LT ARROW (1 EA)  
 STA 99+11.00 LT "O,N,L,Y" (4 EA)

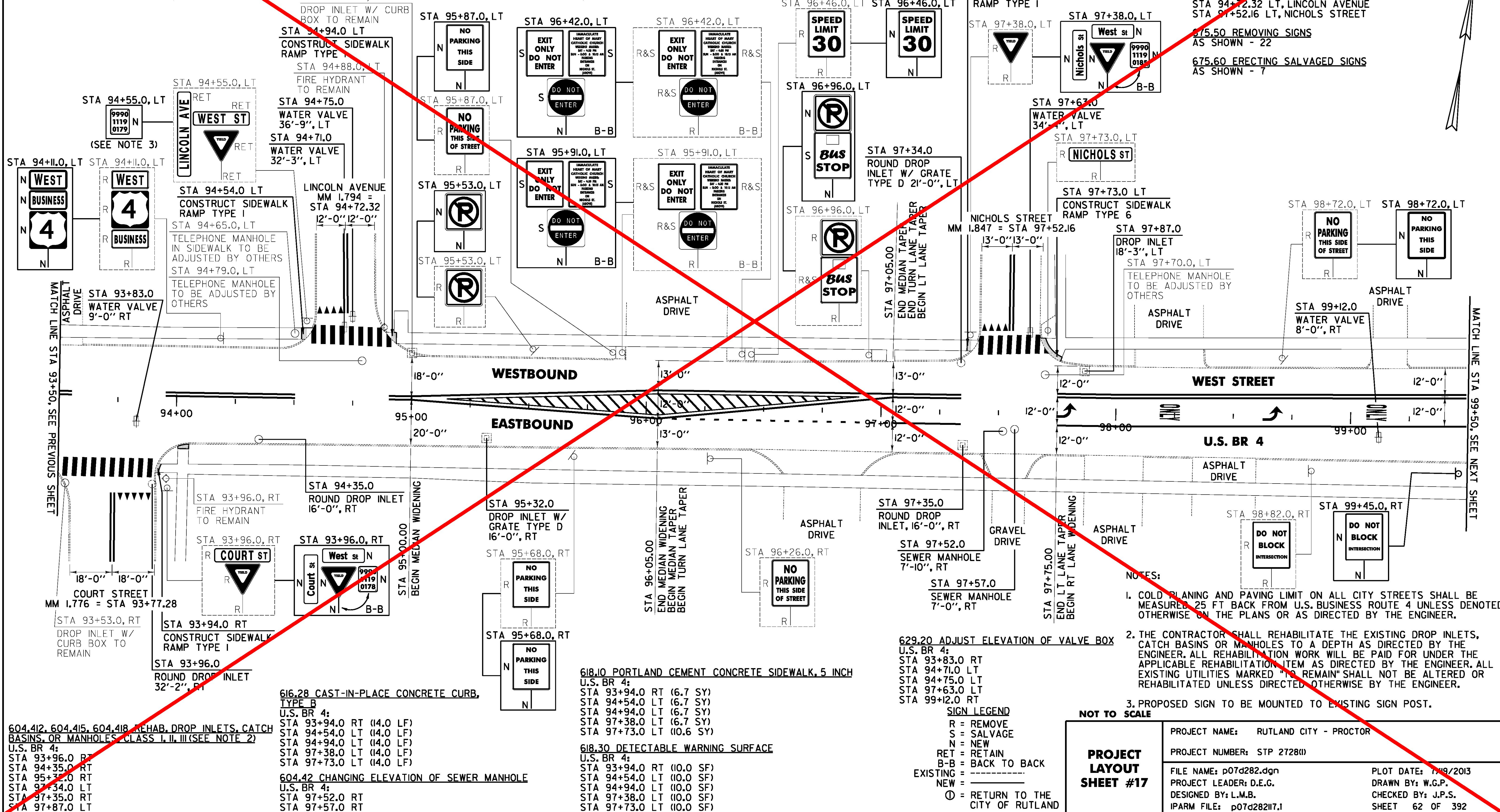
646.692 TEMPORARY LETTER OR SYMBOL, PAINT  
 U.S. BR 4:  
 STA 93+77.28 RT, COURT STREET, YIELD MARKING (10 EA)  
 STA 94+72.32 LT, LINCOLN AVENUE, YIELD MARKING (8 EA)  
 STA 97+52.16 LT, NICHOLS STREET, YIELD MARKING (8 EA)  
 STA 97+79.00 LT ARROW (2 EA)  
 STA 98+67.00 LT ARROW (2 EA)

646.501 DURABLE CROSSWALK MARKING, TYPE I TAPE  
 U.S. BR 4:  
 STA 93+77.28 RT, COURT STREET  
 STA 94+72.32 LT, LINCOLN AVENUE  
 STA 97+52.16 LT, NICHOLS STREET

646.702 TEMPORARY CROSSWALK MARKING, PAINT  
 U.S. BR 4:  
 STA 93+77.28 RT, COURT STREET  
 STA 94+72.32 LT, LINCOLN AVENUE  
 STA 97+52.16 LT, NICHOLS STREET

675.50 REMOVING SIGNS  
 AS SHOWN - 22

675.60 ERECTING SALVAGED SIGNS  
 AS SHOWN - 7



FILE NAME: I:\17765\CADD\WSTIN\STP\_27280\p07d282.dwg - p07d282.dwg - p07d282.dwg  
 DATE/TIME: 7/19/2013 4:16:16  
 USER: J.P.S.

604.412, 604.415, 604.418 REHAB, DROP INLETS, CATCH BASINS, OR MANHOLES CLASS I, II, III (SEE NOTE 2)  
 U.S. BR 4:  
 STA 93+96.0 RT  
 STA 94+35.0 RT  
 STA 95+35.0 RT  
 STA 97+34.0 LT  
 STA 97+35.0 RT  
 STA 97+87.0 LT

616.28 CAST-IN-PLACE CONCRETE CURB, TYPE B  
 U.S. BR 4:  
 STA 93+94.0 RT (14.0 LF)  
 STA 94+54.0 LT (14.0 LF)  
 STA 94+94.0 LT (14.0 LF)  
 STA 97+38.0 LT (14.0 LF)  
 STA 97+73.0 LT (14.0 LF)

604.42 CHANGING ELEVATION OF SEWER MANHOLE  
 U.S. BR 4:  
 STA 97+52.0 RT  
 STA 97+57.0 RT

618.10 PORTLAND CEMENT CONCRETE SIDEWALK, 5 INCH  
 U.S. BR 4:  
 STA 93+94.0 RT (6.7 SY)  
 STA 94+54.0 LT (6.7 SY)  
 STA 94+94.0 LT (6.7 SY)  
 STA 97+38.0 LT (6.7 SY)  
 STA 97+73.0 LT (10.6 SY)

618.30 DETECTABLE WARNING SURFACE  
 U.S. BR 4:  
 STA 93+94.0 RT (10.0 SF)  
 STA 94+54.0 LT (10.0 SF)  
 STA 94+94.0 LT (10.0 SF)  
 STA 97+38.0 LT (10.0 SF)  
 STA 97+73.0 LT (10.0 SF)

629.20 ADJUST ELEVATION OF VALVE BOX  
 U.S. BR 4:  
 STA 93+83.0 RT  
 STA 94+71.0 LT  
 STA 94+75.0 LT  
 STA 97+63.0 LT  
 STA 99+12.0 RT

**SIGN LEGEND**  
 R = REMOVE  
 S = SALVAGE  
 N = NEW  
 RET = RETAIN  
 B-B = BACK TO BACK  
 EXISTING = - - - - -  
 NEW = \_\_\_\_\_  
 ⊕ = RETURN TO THE CITY OF RUTLAND

**NOTES:**

- COLD PLANING AND PAVING LIMIT ON ALL CITY STREETS SHALL BE MEASURED 25 FT BACK FROM U.S. BUSINESS ROUTE 4 UNLESS DENOTED OTHERWISE ON THE PLANS OR AS DIRECTED BY THE ENGINEER.
- THE CONTRACTOR SHALL REHABILITATE THE EXISTING DROP INLETS, CATCH BASINS OR MANHOLES TO A DEPTH AS DIRECTED BY THE ENGINEER. ALL REHABILITATION WORK WILL BE PAID FOR UNDER THE APPLICABLE REHABILITATION ITEM AS DIRECTED BY THE ENGINEER. ALL EXISTING UTILITIES MARKED "TO REMAIN" SHALL NOT BE ALTERED OR REHABILITATED UNLESS DIRECTED OTHERWISE BY THE ENGINEER.
- PROPOSED SIGN TO BE MOUNTED TO EXISTING SIGN POST.

<b>PROJECT LAYOUT SHEET #17</b>	PROJECT NAME: RUTLAND CITY - PROCTOR	PLOT DATE: 7/19/2013
	PROJECT NUMBER: STP 27280	DRAWN BY: W.G.P.
	FILE NAME: p07d282.dwg	CHECKED BY: J.P.S.
	PROJECT LEADER: D.E.G.	SHEET 62 OF 392

Sheet 62 Has Been Replaced by Sheet 62A