

646.406 DURABLE 4 INCH WHITE LINE, RECESSED POLYUREA
(ALL LINES WILL INCLUDE EDGE LINE BREAKS AND RADIUS FOR TOWN HIGHWAYS)
U.S. BR 4:
STA 87+50.00 - STA 88+10.00 SOLID LANE LINE RT
STA 88+49.28 SOLID LANE LINE RT, WALES STREET
STA 88+49.28 SOLID LANE LINE RT, WALES STREET

646.416 DURABLE 4 INCH YELLOW LINE, RECESSED POLYUREA
(ALL LINES WILL INCLUDE C/L BREAKS FOR TOWN HIGHWAYS) S=SOLID, D=DASHED
U.S. BR 4:
STA 87+50.00 - STA 88+10.00 DOUBLE SOLID LT
STA 88+44.00 DOUBLE SOLID LT, CHURCH ST
STA 88+70.00 - STA 89+25.00 DOUBLE SOLID MEDIAN LT/RT
STA 89+25.00 - STA 93+00.00 SOLID/DASHED LANE LINES LT/RT
STA 90+81.60 DOUBLE SOLID LT, ELM ST
STA 93+00.00 - STA 93+50.00 DOUBLE SOLID MEDIAN LT/RT

646.602 TEMPORARY 4 INCH WHITE LINE, PAINT
(ALL LINES WILL INCLUDE EDGE LINE BREAKS AND RADIUS FOR TOWN HIGHWAYS)
U.S. BR 4:
STA 87+50.00 - STA 88+10.00 SOLID LANE LINE RT
STA 88+49.28 SOLID LANE LINE RT, WALES STREET
STA 88+49.28 SOLID LANE LINE RT, WALES STREET

646.612 TEMPORARY 4 INCH YELLOW LINE, PAINT
(ALL LINES WILL INCLUDE C/L BREAKS FOR TOWN HIGHWAYS) S=SOLID, D=DASHED
U.S. BR 4:
STA 87+50.00 - STA 88+10.00 DOUBLE SOLID LT
STA 88+44.00 DOUBLE SOLID LT, CHURCH ST
STA 88+70.00 - STA 89+25.00 DOUBLE SOLID MEDIAN LT/RT
STA 89+25.00 - STA 93+00.00 SOLID/DASHED LANE LINES LT/RT
STA 90+81.60 DOUBLE SOLID LT, ELM ST
STA 93+00.00 - STA 93+50.00 DOUBLE SOLID MEDIAN LT/RT

646.456 DURABLE 8 INCH YELLOW LINE, RECESSED POLYUREA
U.S. BR 4:
STA 88+70.00 - STA 89+25.00 HATCHED MEDIAN LT/RT
STA 93+00.00 - STA 93+50.00 HATCHED MEDIAN LT/RT

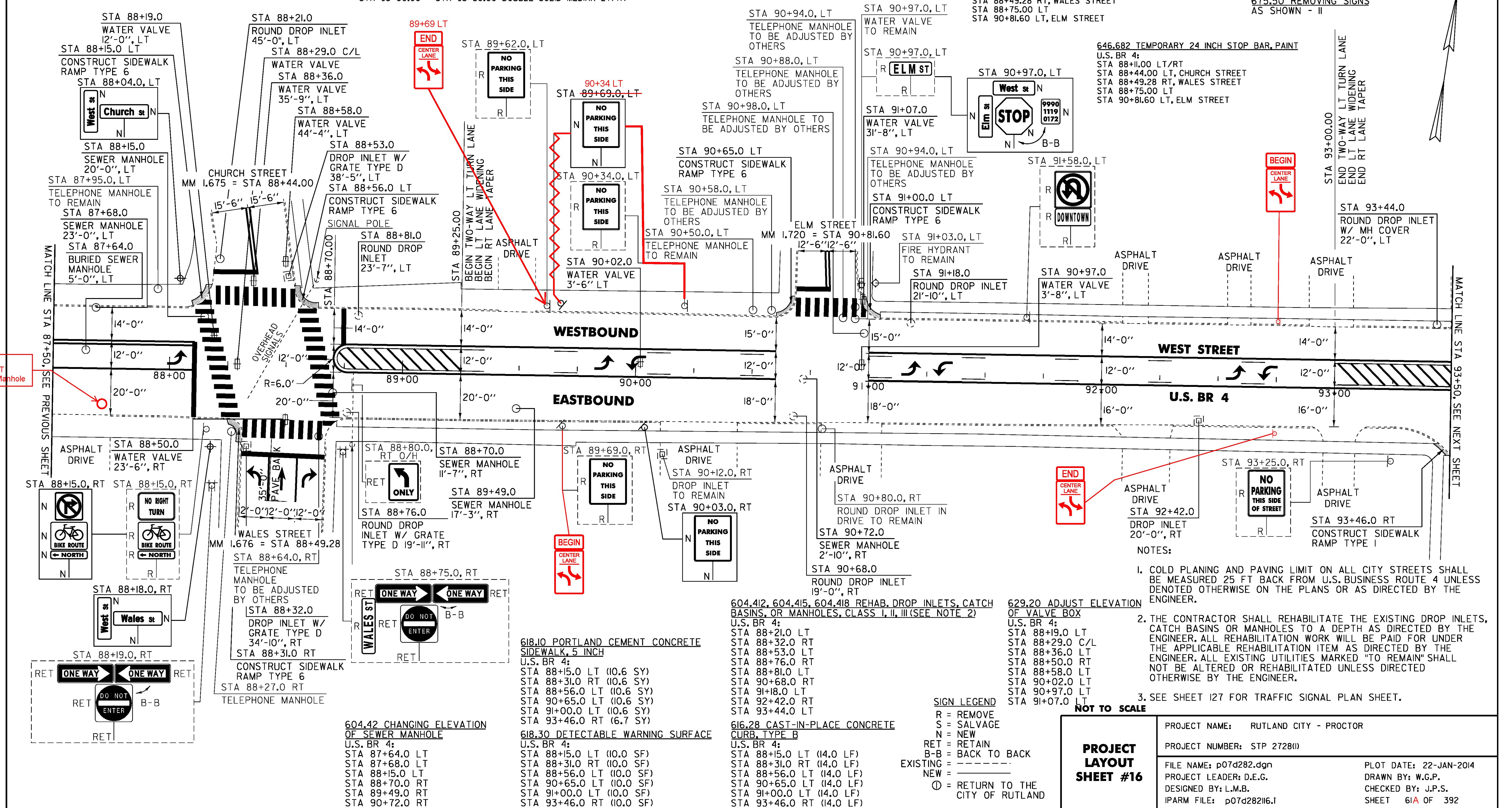
646.491 DURABLE LETTER OR SYMBOL, TYPE I TAPE
U.S. BR 4:
STA 88+01.80 LT ARROW (1 EA)
STA 88+49.28 RT WALES STREET ARROW (1 EA)
STA 88+49.28 RT WALES STREET ARROW (1 EA)
STA 88+49.28 RT WALES STREET ARROW (1 EA)
STA 89+85.80 LT ARROW (1 EA)
STA 89+99.30 LT ARROW (1 EA)
STA 91+18.00 LT ARROW (1 EA)
STA 91+32.00 LT ARROW (1 EA)
STA 92+58.00 LT ARROW (1 EA)
STA 92+72 LT ARROW (1 EA)

646.692 TEMPORARY LETTER OR SYMBOL, PAINT
U.S. BR 4:
STA 88+01.80 LT ARROW (2 EA)
STA 88+49.28 RT WALES STREET ARROW (2 EA)
STA 88+49.28 RT WALES STREET ARROW (2 EA)
STA 88+49.28 RT WALES STREET ARROW (2 EA)
STA 89+85.80 LT ARROW (2 EA)
STA 89+99.30 LT ARROW (2 EA)
STA 91+18.00 LT ARROW (2 EA)
STA 91+32.00 LT ARROW (2 EA)
STA 92+58.00 LT ARROW (2 EA)
STA 92+72 LT ARROW (2 EA)

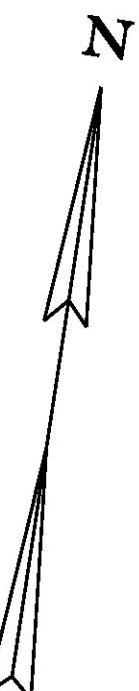
646.501 DURABLE CROSSWALK MARKING, TYPE I TAPE
U.S. BR 4:
STA 88+21.00 LT/RT
STA 88+44.00 LT, CHURCH STREET
STA 88+49.28 RT, WALES STREET
STA 88+63.00 LT/RT
STA 90+81.60 LT, ELM STREET

646.702 TEMPORARY CROSSWALK MARKING, PAINT
U.S. BR 4:
STA 88+21.00 LT/RT
STA 88+44.00 LT, CHURCH STREET
STA 88+49.28 RT, WALES STREET
STA 88+63.00 LT/RT
STA 90+81.60 LT, ELM STREET

675.50 REMOVING SIGNS AS SHOWN - II



87+71
15'-0" RT
Sewer Manhole



- NOTES:
1. COLD PLANING AND PAVING LIMIT ON ALL CITY STREETS SHALL BE MEASURED 25 FT BACK FROM U.S. BUSINESS ROUTE 4 UNLESS DENOTED OTHERWISE ON THE PLANS OR AS DIRECTED BY THE ENGINEER.
 2. THE CONTRACTOR SHALL REHABILITATE THE EXISTING DROP INLETS, CATCH BASINS OR MANHOLES TO A DEPTH AS DIRECTED BY THE ENGINEER. ALL REHABILITATION WORK WILL BE PAID FOR UNDER THE APPLICABLE REHABILITATION ITEM AS DIRECTED BY THE ENGINEER. ALL EXISTING UTILITIES MARKED "TO REMAIN" SHALL NOT BE ALTERED OR REHABILITATED UNLESS DIRECTED OTHERWISE BY THE ENGINEER.
 3. SEE SHEET I27 FOR TRAFFIC SIGNAL PLAN SHEET.

PROJECT LAYOUT SHEET #16	PROJECT NAME: RUTLAND CITY - PROCTOR
	PROJECT NUMBER: STP 2728(II)
	FILE NAME: p07d282.dgn
	IPARM FILE: p07d282i16.1
	PLOT DATE: 22-JAN-2014
	DRAWN BY: W.G.P.
	DESIGNED BY: L.M.B.
	SHEET 61A OF 392

SIGN LEGEND
R = REMOVE
S = SALVAGE
N = NEW
RET = RETAIN
B-B = BACK TO BACK
EXISTING = - - - - -
NEW = _____
⊙ = RETURN TO THE CITY OF RUTLAND

604.42 CHANGING ELEVATION OF SEWER MANHOLE
U.S. BR 4:
STA 87+64.0 LT
STA 87+68.0 LT
STA 88+15.0 LT
STA 88+70.0 RT
STA 89+49.0 RT
STA 90+72.0 RT

618.10 PORTLAND CEMENT CONCRETE SIDEWALK, 5 INCH
U.S. BR 4:
STA 88+15.0 LT (10.6 SY)
STA 88+31.0 RT (10.6 SY)
STA 88+56.0 LT (10.6 SY)
STA 90+65.0 LT (10.6 SY)
STA 91+00.0 LT (10.6 SY)
STA 93+46.0 RT (6.7 SY)

618.30 DETECTABLE WARNING SURFACE
U.S. BR 4:
STA 88+15.0 LT (10.0 SF)
STA 88+31.0 RT (10.0 SF)
STA 88+56.0 LT (10.0 SF)
STA 90+65.0 LT (10.0 SF)
STA 91+00.0 LT (10.0 SF)
STA 93+46.0 RT (10.0 SF)

616.28 CAST-IN-PLACE CONCRETE CURB, TYPE B
U.S. BR 4:
STA 88+15.0 LT (14.0 LF)
STA 88+31.0 RT (14.0 LF)
STA 88+56.0 LT (14.0 LF)
STA 90+65.0 LT (14.0 LF)
STA 91+00.0 LT (14.0 LF)
STA 93+46.0 RT (14.0 LF)