

**646.406 DURABLE 4 INCH WHITE LINE, RECESSED POLYUREA**  
 (ALL LINES WILL INCLUDE EDGE LINE BREAKS AND RADIUS FOR TOWN HIGHWAYS)  
 U.S. BR 4:  
 STA 82+50.00 - STA 82+75.00 DOTTED LANE LINE LT  
 STA 82+50.00 - STA 83+41.00 RT, PARKING SPACES  
 STA 82+70.00 - STA 84+05.00 LT, PARKING SPACES  
 STA 83+40.00 - STA 83+60.00 RT, NO PARKING EDGE LINE  
 STA 84+55.00 - STA 85+75.00 SOLID LANE LINE LT  
 STA 85+25.00 - STA 86+94.00 RT, PARKING SPACES  
 STA 85+75.00 - STA 87+25.00 DOTTED LANE LINE LT  
 STA 85+75.00 - STA 87+25.00 DOTTED LANE LINE RT  
 STA 87+25.00 - STA 87+50.00 SOLID LANE LINE RT

**646.602 TEMPORARY 4 INCH WHITE LINE, PAINT**  
 (ALL LINES WILL INCLUDE EDGE LINE BREAKS AND RADIUS FOR TOWN HIGHWAYS)  
 U.S. BR 4:  
 STA 82+50.00 - STA 82+75.00 DOTTED LANE LINE LT  
 STA 82+50.00 - STA 83+41.00 RT, PARKING SPACES  
 STA 82+70.00 - STA 84+05.00 LT, PARKING SPACES  
 STA 83+40.00 - STA 83+60.00 RT, NO PARKING EDGE LINE  
 STA 84+55.00 - STA 85+75.00 SOLID LANE LINE LT  
 STA 85+25.00 - STA 86+94.00 RT, PARKING SPACES  
 STA 85+75.00 - STA 87+25.00 DOTTED LANE LINE LT  
 STA 85+75.00 - STA 87+25.00 DOTTED LANE LINE RT  
 STA 87+25.00 - STA 87+50.00 SOLID LANE LINE RT

**646.446 DURABLE 8 INCH WHITE LINE, RECESSED POLYUREA**  
 U.S. BR 4:  
 STA 83+40.00 - STA 83+64.00 RT NO PARKING

**646.491 DURABLE LETTER OR SYMBOL, TYPE I TAPE**  
 U.S. BR 4:  
 STA 84+73.30 LT ARROW (1 EA)  
 STA 85+22.00 LT "O,N,L,Y" (4 EA)  
 STA 85+70.80 LT ARROW (1 EA)  
 STA 87+29.30 LT ARROW (1 EA)

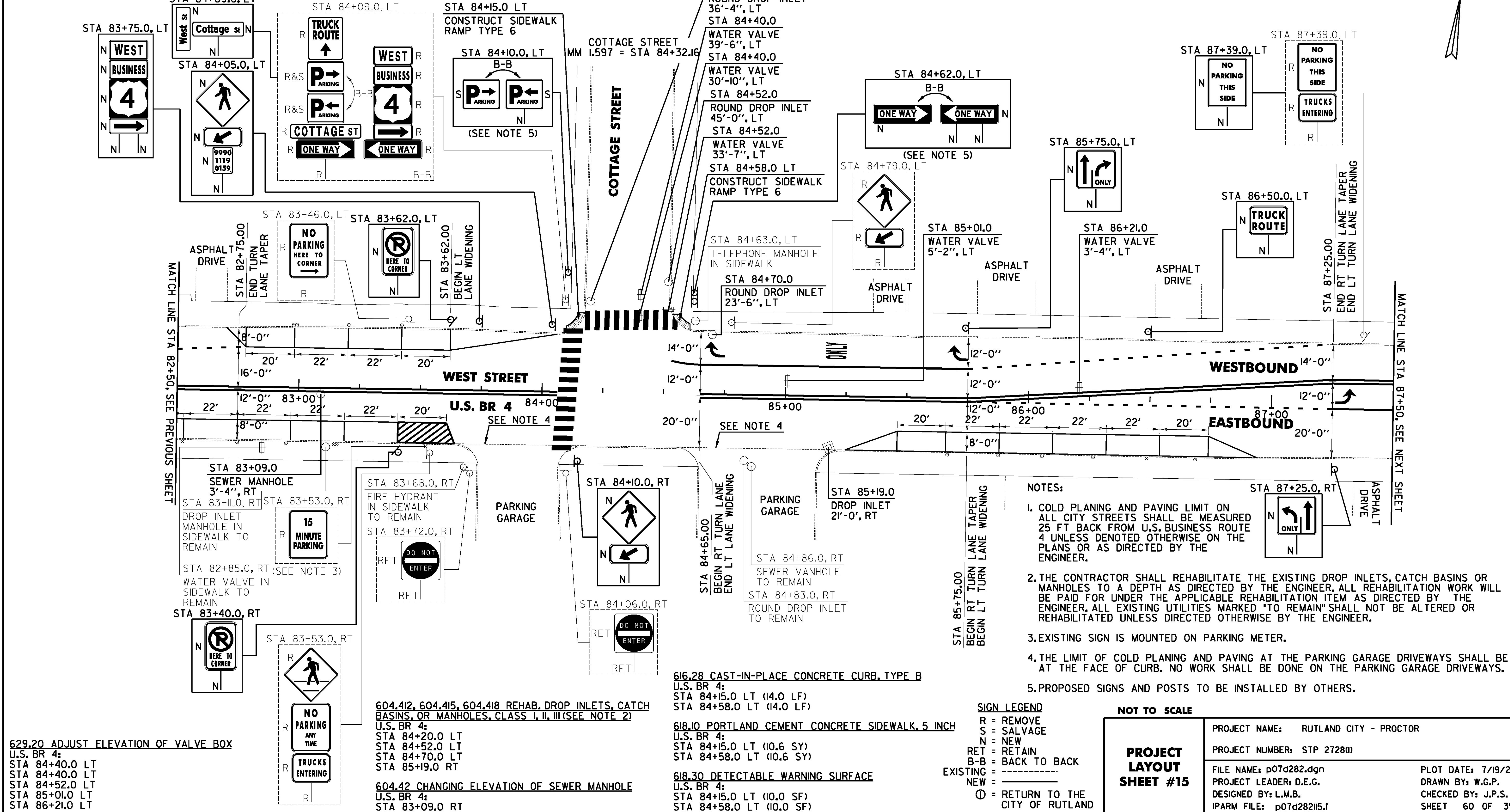
**646.501 DURABLE CROSSWALK MARKING, TYPE I TAPE**  
 U.S. BR 4:  
 STA 84+10.00 LT/RT  
 STA 84+32.16 LT, COTTAGE STREET

**646.702 TEMPORARY CROSSWALK MARKING, PAINT**  
 U.S. BR 4:  
 STA 84+10.00 LT/RT  
 STA 84+32.16 LT, COTTAGE STREET

**675.50 REMOVING SIGNS**  
 AS SHOWN - 19

**646.416 DURABLE 4 INCH YELLOW LINE, RECESSED POLYUREA**  
 (ALL LINES WILL INCLUDE C/L BREAKS FOR TOWN HIGHWAYS) S=SOLID, D=DASHED  
 U.S. BR 4:  
 STA 82+50.00 - STA 85+75.00 DOUBLE SOLID RT  
 STA 85+75.00 - STA 87+50.00 DOUBLE SOLID LT

**646.612 TEMPORARY 4 INCH YELLOW LINE, PAINT**  
 (ALL LINES WILL INCLUDE C/L BREAKS FOR TOWN HIGHWAYS) S=SOLID, D=DASHED  
 U.S. BR 4:  
 STA 82+50.00 - STA 85+75.00 DOUBLE SOLID RT  
 STA 85+75.00 - STA 87+50.00 DOUBLE SOLID LT



- NOTES:**
- COLD PLANING AND PAVING LIMIT ON ALL CITY STREETS SHALL BE MEASURED 25 FT BACK FROM U.S. BUSINESS ROUTE 4 UNLESS DENOTED OTHERWISE ON THE PLANS OR AS DIRECTED BY THE ENGINEER.
  - THE CONTRACTOR SHALL REHABILITATE THE EXISTING DROP INLETS, CATCH BASINS OR MANHOLES TO A DEPTH AS DIRECTED BY THE ENGINEER. ALL REHABILITATION WORK WILL BE PAID FOR UNDER THE APPLICABLE REHABILITATION ITEM AS DIRECTED BY THE ENGINEER. ALL EXISTING UTILITIES MARKED "TO REMAIN" SHALL NOT BE ALTERED OR REHABILITATED UNLESS DIRECTED OTHERWISE BY THE ENGINEER.
  - EXISTING SIGN IS MOUNTED ON PARKING METER.
  - THE LIMIT OF COLD PLANING AND PAVING AT THE PARKING GARAGE DRIVEWAYS SHALL BE AT THE FACE OF CURB. NO WORK SHALL BE DONE ON THE PARKING GARAGE DRIVEWAYS.
  - PROPOSED SIGNS AND POSTS TO BE INSTALLED BY OTHERS.

**SIGN LEGEND**

R = REMOVE  
 S = SALVAGE  
 N = NEW  
 RET = RETAIN  
 B-B = BACK TO BACK  
 EXISTING = -----  
 NEW = \_\_\_\_\_  
 ⊕ = RETURN TO THE CITY OF RUTLAND

**NOT TO SCALE**

<b>PROJECT LAYOUT SHEET #15</b>	PROJECT NAME: RUTLAND CITY - PROCTOR	PLOT DATE: 7/19/2013
	PROJECT NUMBER: STP 2728(1)	DRAWN BY: W.G.P.
	FILE NAME: p07d282.dgn	DESIGNED BY: L.M.B.
	IPARM FILE: p07d282i5.1	CHECKED BY: J.P.S.
		SHEET 60 OF 392

FILE NAME: I:\17753\CA000\WSTIN\STP 2728\p07d282.dgn - p07d282i5.dgn  
 DATE/TIME: 7/19/2013 4:49:16  
 USER: J.P.S.