

**646.406 DURABLE 4 INCH WHITE LINE, RECESSED POLYUREA**  
 (ALL LINES WILL INCLUDE EDGE LINE BREAKS AND RADIUS FOR TOWN HIGHWAYS)  
 U.S. BR 4:  
 STA 76+50.00 - STA 77+00.00 SOLID LANE LINE LT  
 STA 77+00.00 - STA 78+00.00 DOTTED LANE LINE LT  
 STA 77+02.00 - STA 78+43.00 RT, PARKING SPACES  
 STA 77+13.00 - STA 78+43.00 LT, PARKING SPACES  
 STA 78+58.00 - STA 79+73.00 LT, PARKING SPACES  
 STA 79+00.00 - STA 80+00.00 DOTTED LANE LINE RT  
 STA 79+00.00 - STA 80+00.00 DOTTED LANE LINE RT  
 STA 79+84.00 - STA 80+67.00 LT, PARKING SPACES  
 STA 80+00.00 - STA 80+70.00 SOLID LANE LINE RT  
 STA 80+00.00 - STA 80+70.00 SOLID LANE LINE RT  
 STA 81+0.08 SOLID LANE LINE RT, WEST STREET  
 STA 81+0.08 SOLID LANE LINE RT, MERCHANTS ROW  
 STA 81+0.08 SOLID LANE LINE RT, MERCHANTS ROW  
 STA 81+44.00 - STA 82+50.00 RT, PARKING SPACES  
 STA 81+50.00 - STA 81+80.00 SOLID LANE LINE LT  
 STA 81+80.00 - STA 82+50.00 DOTTED LANE LINE LT

**646.602 TEMPORARY 4 INCH WHITE LINE, PAINT**  
 (ALL LINES WILL INCLUDE EDGE LINE BREAKS AND RADIUS FOR TOWN HIGHWAYS)  
 U.S. BR 4:  
 STA 76+50.00 - STA 77+00.00 SOLID LANE LINE LT  
 STA 77+00.00 - STA 78+00.00 DOTTED LANE LINE LT  
 STA 77+02.00 - STA 78+43.00 RT, PARKING SPACES  
 STA 77+13.00 - STA 78+43.00 LT, PARKING SPACES  
 STA 78+58.00 - STA 79+73.00 LT, PARKING SPACES  
 STA 79+00.00 - STA 80+00.00 DOTTED LANE LINE RT  
 STA 79+00.00 - STA 80+00.00 DOTTED LANE LINE RT  
 STA 79+84.00 - STA 80+67.00 LT, PARKING SPACES  
 STA 80+00.00 - STA 80+70.00 SOLID LANE LINE RT  
 STA 80+00.00 - STA 80+70.00 SOLID LANE LINE RT  
 STA 81+0.08 SOLID LANE LINE RT, WEST STREET  
 STA 81+0.08 SOLID LANE LINE RT, MERCHANTS ROW  
 STA 81+0.08 SOLID LANE LINE RT, MERCHANTS ROW  
 STA 81+44.00 - STA 82+50.00 RT, PARKING SPACES  
 STA 81+50.00 - STA 81+80.00 SOLID LANE LINE LT  
 STA 81+80.00 - STA 82+50.00 DOTTED LANE LINE LT

**646.491 DURABLE LETTER OR SYMBOL, TYPE ITAPE**  
 U.S. BR 4:  
 STA 76+95.80 LT ARROW (1 EA)  
 STA 78+30.00 LT HANDICAP SYMBOL (1 EA)  
 STA 80+04.20 C/L ARROW (1 EA)  
 STA 80+04.20 RT ARROW (1 EA)  
 STA 80+04.20 RT ARROW (1 EA)  
 STA 80+65.80 C/L ARROW (1 EA)  
 STA 80+65.80 RT ARROW (1 EA)  
 STA 80+65.80 RT ARROW (1 EA)  
 STA 81+0.08 RT, WEST STREET ARROW (2 EA)  
 STA 81+0.08 RT, WEST STREET ARROW (1 EA)  
 STA 81+0.08 RT, MERCHANTS ROW ARROW (1 EA)  
 STA 81+0.08 RT, MERCHANTS ROW ARROW (1 EA)  
 STA 81+0.08 RT, MERCHANTS ROW ARROW (1 EA)  
 STA 81+72.79 LT ARROW (1 EA)  
 STA 81+72.79 LT ARROW (2 EA)  
 STA 82+00.00 RT HANDICAP SYMBOL (1 EA)

**646.446 DURABLE 8 INCH WHITE LINE, RECESSED POLYUREA**  
 U.S. BR 4:  
 STA 76+86.00 - STA 76+98.00 LT FIRE HYDRANT, NO PARKING  
 STA 81+0.08 RT, WEST STREET, FIRE HYDRANT, NO PARKING

**646.487 DURABLE 24 INCH STOP BAR RECESSED, TYPE ITAPE**  
 U.S. BR 4:  
 STA 80+71.00 LT/RT  
 STA 81+0.08 RT, WEST STREET  
 STA 81+0.08 RT, MERCHANTS ROW  
 STA 81+49.00 LT

**646.682 TEMPORARY 24 INCH STOP BAR, PAINT**  
 U.S. BR 4:  
 STA 80+71.00 LT/RT  
 STA 81+0.08 RT, WEST STREET  
 STA 81+0.08 RT, MERCHANTS ROW  
 STA 81+49.00 LT

**646.501 DURABLE CROSSWALK MARKING, TYPE I TAPE**  
 U.S. BR 4:  
 STA 80+81.00 LT/RT  
 STA 81+0.08 RT, WEST STREET  
 STA 81+0.08 RT, MERCHANTS ROW  
 STA 81+40.00 LT/RT

**646.702 TEMPORARY CROSSWALK MARKING, PAINT**  
 U.S. BR 4:  
 STA 80+81.00 LT/RT  
 STA 81+0.08 RT, WEST STREET  
 STA 81+0.08 RT, MERCHANTS ROW  
 STA 81+40.00 LT/RT

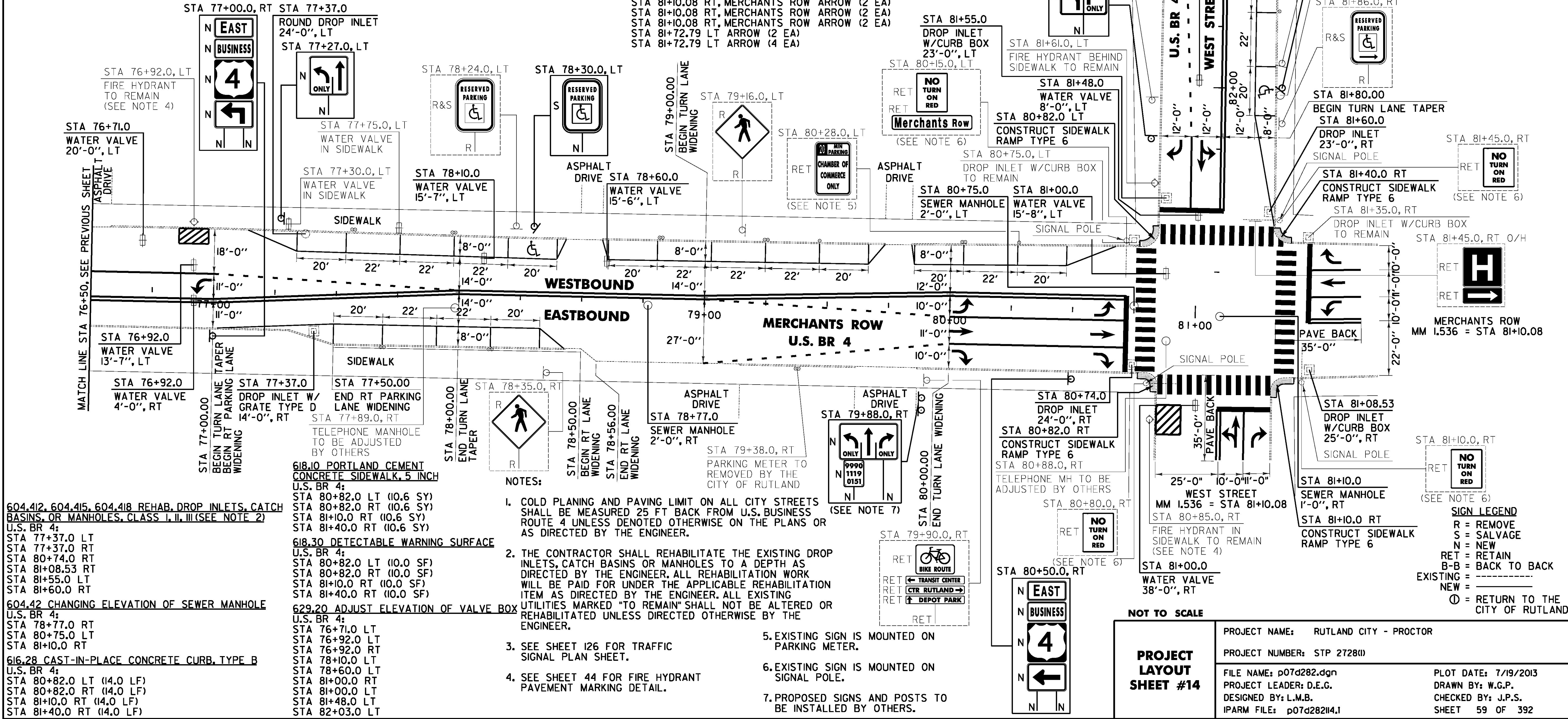
**646.416 DURABLE 4 INCH YELLOW LINE, RECESSED POLYUREA**  
 (ALL LINES WILL INCLUDE C/L BREAKS FOR TOWN HIGHWAYS) S=SOLID, D=DASHED  
 U.S. BR 4:  
 STA 76+50.00 - STA 78+00.00 DOUBLE SOLID RT  
 STA 78+00.00 - STA 80+71.00 DOUBLE SOLID LT  
 STA 81+0.08 DOUBLE SOLID RT, WEST STREET  
 STA 81+0.08 DOUBLE SOLID RT, MERCHANTS ROW  
 STA 81+49.00 - STA 82+50.00 DOUBLE SOLID RT

**646.612 TEMPORARY 4 INCH YELLOW LINE, PAINT**  
 (ALL LINES WILL INCLUDE C/L BREAKS FOR TOWN HIGHWAYS) S=SOLID, D=DASHED  
 U.S. BR 4:  
 STA 76+50.00 - STA 78+00.00 DOUBLE SOLID RT  
 STA 78+00.00 - STA 80+71.00 DOUBLE SOLID LT  
 STA 81+0.08 DOUBLE SOLID RT, WEST STREET  
 STA 81+0.08 DOUBLE SOLID RT, MERCHANTS ROW  
 STA 81+49.00 - STA 82+50.00 DOUBLE SOLID RT

**646.692 TEMPORARY LETTER OR SYMBOL, PAINT**  
 U.S. BR 4:  
 STA 76+95.80 LT ARROW (2 EA)  
 STA 80+04.20 C/L ARROW (2 EA)  
 STA 80+04.20 RT ARROW (2 EA)  
 STA 80+04.20 RT ARROW (2 EA)  
 STA 80+65.80 C/L ARROW (2 EA)  
 STA 80+65.80 RT ARROW (2 EA)  
 STA 80+65.80 RT ARROW (2 EA)  
 STA 81+0.08 RT, WEST STREET ARROW (4 EA)  
 STA 81+0.08 RT, WEST STREET ARROW (2 EA)  
 STA 81+0.08 RT, MERCHANTS ROW ARROW (2 EA)  
 STA 81+0.08 RT, MERCHANTS ROW ARROW (2 EA)  
 STA 81+0.08 RT, MERCHANTS ROW ARROW (2 EA)  
 STA 81+72.79 LT ARROW (2 EA)  
 STA 81+72.79 LT ARROW (4 EA)

**646.50 REMOVING SIGNS**  
 AS SHOWN - 5

**646.60 ERECTING SALVAGED SIGNS**  
 AS SHOWN - 2



FILE NAME: I:\177525\CADD\WSTIN\STP 2728\p07d282.dwg - rml, 14.dgn  
 DATE/TIME: 7/19/2013 4:49:16  
 USER: jls

**604.412, 604.415, 604.418 REHAB. DROP INLETS, CATCH BASINS, OR MANHOLES, CLASS I, II, III (SEE NOTE 2)**  
 U.S. BR 4:  
 STA 77+37.0 LT  
 STA 77+37.0 RT  
 STA 80+74.0 RT  
 STA 81+08.53 RT  
 STA 81+55.0 LT  
 STA 81+60.0 RT

**604.42 CHANGING ELEVATION OF SEWER MANHOLE**  
 U.S. BR 4:  
 STA 78+77.0 RT  
 STA 80+75.0 LT  
 STA 81+0.0 RT

**616.28 CAST-IN-PLACE CONCRETE CURB, TYPE B**  
 U.S. BR 4:  
 STA 80+82.0 LT (14.0 LF)  
 STA 80+82.0 RT (14.0 LF)  
 STA 81+0.0 RT (14.0 LF)  
 STA 81+40.0 RT (14.0 LF)

**618.10 PORTLAND CEMENT CONCRETE SIDEWALK, 5 INCH**  
 U.S. BR 4:  
 STA 80+82.0 LT (10.6 SY)  
 STA 80+82.0 RT (10.6 SY)  
 STA 81+0.0 RT (10.6 SY)  
 STA 81+40.0 RT (10.6 SY)

**618.30 DETECTABLE WARNING SURFACE**  
 U.S. BR 4:  
 STA 80+82.0 LT (10.0 SF)  
 STA 80+82.0 RT (10.0 SF)  
 STA 81+0.0 RT (10.0 SF)  
 STA 81+40.0 RT (10.0 SF)

**629.20 ADJUST ELEVATION OF VALVE BOX**  
 U.S. BR 4:  
 STA 76+71.0 LT  
 STA 76+92.0 LT  
 STA 76+92.0 RT  
 STA 78+10.0 LT  
 STA 78+60.0 LT  
 STA 81+00.0 RT  
 STA 81+48.0 RT  
 STA 82+03.0 LT

**NOTES:**

- COLD PLANING AND PAVING LIMIT ON ALL CITY STREETS SHALL BE MEASURED 25 FT BACK FROM U.S. BUSINESS ROUTE 4 UNLESS DENOTED OTHERWISE ON THE PLANS OR AS DIRECTED BY THE ENGINEER.
- THE CONTRACTOR SHALL REHABILITATE THE EXISTING DROP INLETS, CATCH BASINS OR MANHOLES TO A DEPTH AS DIRECTED BY THE ENGINEER. ALL REHABILITATION WORK WILL BE PAID FOR UNDER THE APPLICABLE REHABILITATION ITEM AS DIRECTED BY THE ENGINEER. ALL EXISTING UTILITIES MARKED "TO REMAIN" SHALL NOT BE ALTERED OR REHABILITATED UNLESS DIRECTED OTHERWISE BY THE ENGINEER.
- SEE SHEET 126 FOR TRAFFIC SIGNAL PLAN SHEET.
- SEE SHEET 44 FOR FIRE HYDRANT PAVEMENT MARKING DETAIL.
- EXISTING SIGN IS MOUNTED ON PARKING METER.
- EXISTING SIGN IS MOUNTED ON SIGNAL POLE.
- PROPOSED SIGNS AND POSTS TO BE INSTALLED BY OTHERS.

**PROJECT LAYOUT SHEET #14**

PROJECT NAME: RUTLAND CITY - PROCTOR  
 PROJECT NUMBER: STP 2728(1)  
 FILE NAME: p07d282.dgn  
 PROJECT LEADER: D.E.G.  
 DESIGNED BY: L.M.B.  
 IPARM FILE: p07d282i4.1

PLOT DATE: 7/19/2013  
 DRAWN BY: W.G.P.  
 CHECKED BY: J.P.S.  
 SHEET 59 OF 392

