

646.406 DURABLE 4 INCH WHITE LINE, RECESSED POLYUREA
 (ALL LINES WILL INCLUDE EDGE LINE BREAKS AND RADIUS FOR TOWN HIGHWAYS)
 U.S. BR 4:
 STA 53+00.00 - STA 53+08.00 EDGE LINE RT
 STA 53+08.00 - STA 54+06.00 RT, PARKING SPACES
 STA 53+00.00 - STA 53+33.00 EDGE LINE LT
 STA 53+74.00 - STA 54+20.00 LT, NO PARKING EDGE LINE
 STA 54+24.00 - STA 54+92.00 LT, PARKING SPACES
 STA 54+34.00 - STA 54+78.00 RT, PARKING SPACES
 STA 55+23.00 - STA 56+08.00 LT, PARKING SPACES
 STA 55+32.00 - STA 55+57.00 RT, PARKING SPACES
 STA 56+98.00 - STA 57+64.00 LT, PARKING SPACES
 STA 57+11.00 - STA 57+77.00 RT, PARKING SPACES
 STA 58+05.00 - STA 59+00.00 LT, PARKING SPACES
 STA 58+08.00 - STA 58+77.00 RT, PARKING SPACES

646.602 TEMPORARY 4 INCH WHITE LINE, PAINT
 (ALL LINES WILL INCLUDE EDGE LINE BREAKS AND RADIUS FOR TOWN HIGHWAYS)
 U.S. BR 4:
 STA 53+00.00 - STA 53+08.00 EDGE LINE RT
 STA 53+08.00 - STA 54+06.00 RT, PARKING SPACES
 STA 53+00.00 - STA 53+33.00 EDGE LINE LT
 STA 53+74.00 - STA 54+20.00 LT, NO PARKING EDGE LINE
 STA 54+20.00 - STA 54+92.00 LT, PARKING SPACES
 STA 54+34.00 - STA 54+78.00 RT, PARKING SPACES
 STA 55+23.00 - STA 56+08.00 LT, PARKING SPACES
 STA 55+32.00 - STA 55+57.00 RT, PARKING SPACES
 STA 56+98.00 - STA 57+64.00 LT, PARKING SPACES
 STA 57+11.00 - STA 57+77.00 RT, PARKING SPACES
 STA 58+05.00 - STA 59+00.00 LT, PARKING SPACES
 STA 58+08.00 - STA 58+77.00 RT, PARKING SPACES

646.487 DURABLE 24 INCH STOP BAR RECESSED, TYPE I TAPE
 U.S. BR 4:
 STA 53+53.92 LT, WATER STREET
 STA 56+49.60 LT, CLEVELAND AVENUE
 STA 56+49.60 RT, CLEVELAND AVENUE
646.612 TEMPORARY 4 INCH YELLOW LINE, PAINT
 (ALL LINES WILL INCLUDE C/L BREAKS FOR TOWN HIGHWAYS) S=SOLID, D=DASHED
 U.S. BR 4:
 STA 53+00.00 - STA 59+00.00 LT C RT S - S
 STA 53+53.92 DOUBLE SOLID LT, WATER STREET
 STA 56+49.60 DOUBLE SOLID LT, CLEVELAND AVENUE
 STA 56+49.60 DOUBLE SOLID RT, CLEVELAND AVENUE

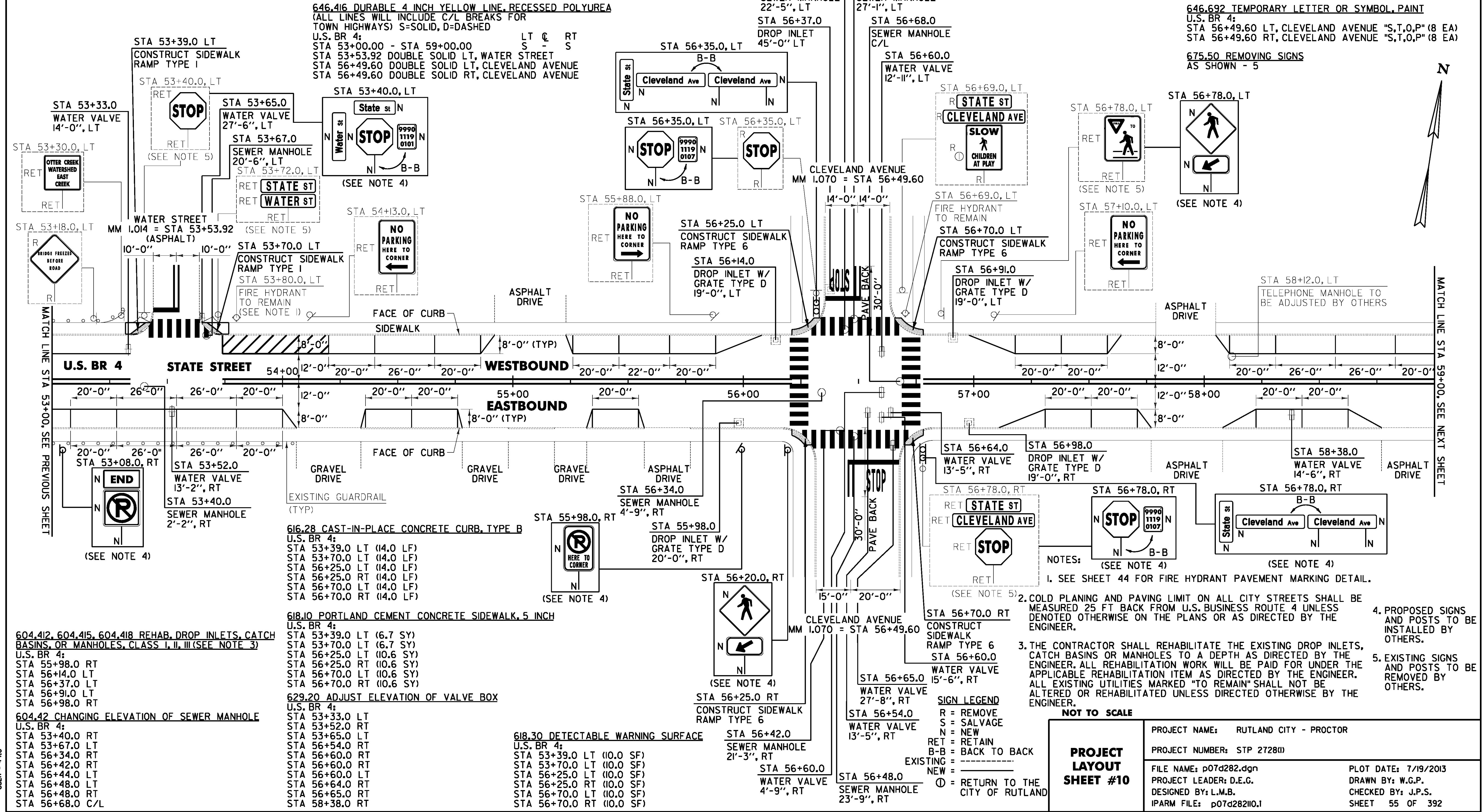
646.682 TEMPORARY 24 INCH STOP BAR, PAINT
 U.S. BR 4:
 STA 53+53.92 LT, WATER STREET
 STA 56+49.60 LT, CLEVELAND AVENUE
 STA 56+49.60 RT, CLEVELAND AVENUE
646.501 DURABLE CROSSWALK MARKING, TYPE I TAPE
 U.S. BR 4:
 STA 53+53.92 LT, WATER STREET
 STA 56+25.00 LT/RT
 STA 56+49.60 LT, CLEVELAND AVENUE
 STA 56+49.60 RT, CLEVELAND AVENUE
 STA 56+73.00 LT/RT

646.702 TEMPORARY CROSSWALK MARKING, PAINT
 U.S. BR 4:
 STA 53+53.92 LT, WATER STREET
 STA 56+25.00 LT/RT
 STA 56+49.60 LT, CLEVELAND AVENUE
 STA 56+49.60 RT, CLEVELAND AVENUE
 STA 56+73.00 LT/RT

646.446 DURABLE 8 INCH WHITE LINE, RECESSED POLYUREA
 U.S. BR 4:
 STA 53+74.0 - STA 54+20.0 LT, NO PARKING
646.491 DURABLE LETTER OR SYMBOL, TYPE I TAPE
 U.S. BR 4:
 STA 56+49.60 LT, CLEVELAND AVENUE "S,T,O,P" (4 EA)
 STA 56+49.60 RT, CLEVELAND AVENUE "S,T,O,P" (4 EA)

646.692 TEMPORARY LETTER OR SYMBOL, PAINT
 U.S. BR 4:
 STA 56+49.60 LT, CLEVELAND AVENUE "S,T,O,P" (8 EA)
 STA 56+49.60 RT, CLEVELAND AVENUE "S,T,O,P" (8 EA)

675.50 REMOVING SIGNS
 AS SHOWN - 5



FILE NAME: I:\177623\CAD\00\WST\STP_2728\p07d282.dwg - rml_18.dwg
 DATE/TIME: 7/19/2013 4:49:16
 USER: J.P.S.

PROJECT LAYOUT SHEET #10

PROJECT NAME:	RUTLAND CITY - PROCTOR
PROJECT NUMBER:	STP 2728(1)
FILE NAME:	p07d282.dwg
PROJECT LEADER:	D.E.G.
DESIGNED BY:	L.M.B.
IPARM FILE:	p07d282110.1
PLOT DATE:	7/19/2013
DRAWN BY:	W.G.P.
CHECKED BY:	J.P.S.
SHEET	55 OF 392