

646.406 DURABLE 4 INCH WHITE LINE, RECESSED POLYUREA
 (ALL LINES WILL INCLUDE EDGE LINE BREAKS AND
 RADIUS FOR TOWN HIGHWAYS)
 U.S. BR 4:
 STA 23+50.00 - STA 29+50.00 EDGE LINE LT & RT
 STA 27+40.00 - STA 29+00.00 DOTTED LANE LINE RT
 STA 29+47.00 - STA 29+50.00 SOLID LANE LINE RT

646.416 DURABLE 4 INCH YELLOW LINE, RECESSED POLYUREA
 (ALL LINES WILL INCLUDE C/L BREAKS FOR
 TOWN HIGHWAYS) S=SOLID, D=DASHED
 U.S. BR 4:
 STA 23+50.00 - STA 27+40.00 SOLID/DASH TURN LANE LINES LT/RT
 STA 27+40.00 - STA 29+50.00 DOUBLE SOLID MEDIAN LT/RT
 STA 29+19.84 DOUBLE SOLID LT, CRAMTON AVENUE

646.602 TEMPORARY 4 INCH WHITE LINE, PAINT
 (ALL LINES WILL INCLUDE EDGE LINE BREAKS AND
 RADIUS FOR TOWN HIGHWAYS)
 U.S. BR 4:
 STA 23+50.00 - STA 29+50.00 EDGE LINE LT & RT
 STA 27+40.00 - STA 29+00.00 DOTTED LANE LINE RT
 STA 29+47.00 - STA 29+50.00 SOLID LANE LINE RT

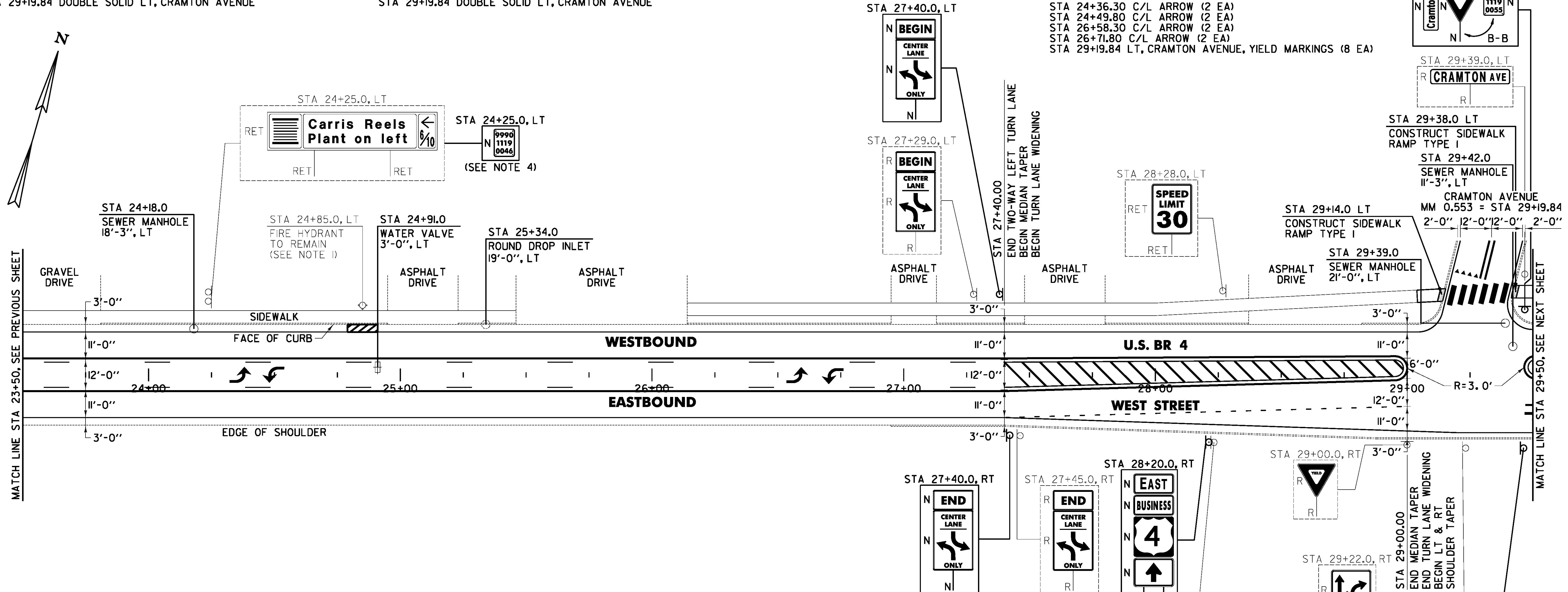
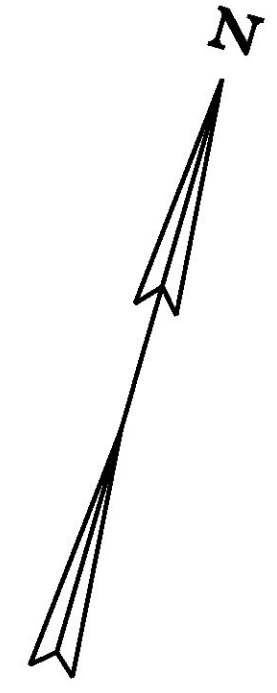
646.612 TEMPORARY 4 INCH YELLOW LINE, PAINT
 (ALL LINES WILL INCLUDE C/L BREAKS FOR
 TOWN HIGHWAYS) S=SOLID, D=DASHED
 U.S. BR 4:
 STA 23+50.00 - STA 27+40.00 SOLID/DASH TURN LANE LINES LT/RT
 STA 27+40.00 - STA 29+50.00 DOUBLE SOLID MEDIAN LT/RT
 STA 29+19.84 DOUBLE SOLID LT, CRAMTON AVENUE

646.446 DURABLE 8 INCH WHITE LINE, RECESSED POLYUREA
 U.S. BR 4:
 STA 24+79.00 - STA 24+91.00 LT, FIRE HYDRANT, NO PARKING
 646.501 DURABLE CROSSWALK MARKING, TYPE I TAPE
 U.S. BR 4:
 STA 29+19.84 LT, CRAMTON AVENUE
 646.702 TEMPORARY CROSSWALK MARKING, PAINT
 U.S. BR 4:
 STA 29+19.84 LT, CRAMTON AVENUE

646.456 DURABLE 8 INCH YELLOW LINE, RECESSED POLYUREA
 U.S. BR 4:
 STA 27+40.00 - STA 29+00.00 HATCHED MEDIAN LT/RT
 STA 29+47.00 - STA 29+50.00 HATCHED MEDIAN LT/RT
 646.491 DURABLE LETTER OR SYMBOL, TYPE I TAPE
 U.S. BR 4:
 STA 24+36.30 C/L ARROW (1 EA)
 STA 24+49.80 C/L ARROW (1 EA)
 STA 26+58.30 C/L ARROW (1 EA)
 STA 26+71.80 C/L ARROW (1 EA)
 STA 29+19.84 LT, CRAMTON AVENUE, YIELD MARKINGS (4 EA)

646.692 TEMPORARY LETTER OR SYMBOL, PAINT
 U.S. BR 4:
 STA 24+36.30 C/L ARROW (2 EA)
 STA 24+49.80 C/L ARROW (2 EA)
 STA 26+58.30 C/L ARROW (2 EA)
 STA 26+71.80 C/L ARROW (2 EA)
 STA 29+19.84 LT, CRAMTON AVENUE, YIELD MARKINGS (8 EA)

675.50 REMOVING SIGNS
 AS SHOWN - II



604.412, 604.415, 604.418 REHAB. DROP INLETS, CATCH
 BASINS, OR MANHOLES, CLASS I, II, III (SEE NOTE 3)
 U.S. BR 4:
 STA 25+34.0 LT

604.42 CHANGING ELEVATION OF SEWER MANHOLE
 U.S. BR 4:
 STA 24+18.0 LT
 STA 29+39.0 LT
 STA 29+42.0 LT

616.28 CAST-IN-PLACE CONCRETE CURB, TYPE B
 U.S. BR 4:
 STA 29+14.0 LT (14.0 LF)
 STA 29+38.0 LT (14.0 LF)

618.10 PORTLAND CEMENT CONCRETE SIDEWALK, 5 INCH
 U.S. BR 4:
 STA 29+14.0 LT (6.7 SY)
 STA 29+38.0 LT (6.7 SY)

618.30 DETECTABLE WARNING SURFACE
 U.S. BR 4:
 STA 29+14.0 LT (10.0 SF)
 STA 29+38.0 LT (10.0 SF)

629.20 ADJUST ELEVATION OF VALVE BOX
 U.S. BR 4:
 STA 24+91.0 LT

- NOTES:
- SEE SHEET 44 FOR FIRE HYDRANT PAVEMENT MARKING DETAIL.
 - COLD PLANING AND PAVING LIMIT ON ALL CITY STREETS SHALL BE MEASURED 25 FT BACK FROM U.S. BUSINESS ROUTE 4 UNLESS DENOTED OTHERWISE ON THE PLANS OR AS DIRECTED BY THE ENGINEER.
 - THE CONTRACTOR SHALL REHABILITATE THE EXISTING DROP INLETS, CATCH BASINS OR MANHOLES TO A DEPTH AS DIRECTED BY THE ENGINEER. ALL REHABILITATION WORK WILL BE PAID FOR UNDER THE APPLICABLE REHABILITATION ITEM AS DIRECTED BY THE ENGINEER. ALL EXISTING UTILITIES MARKED "TO REMAIN" SHALL NOT BE ALTERED OR REHABILITATED UNLESS DIRECTED OTHERWISE BY THE ENGINEER.
 - PROPOSED SIGN TO BE MOUNTED TO EXISTING SIGN POST.

SIGN LEGEND
 R = REMOVE
 S = SALVAGE
 N = NEW
 RET = RETAIN
 B-B = BACK TO BACK
 EXISTING = -----
 NEW = _____
 ⊕ = RETURN TO THE CITY OF RUTLAND

NOT TO SCALE

PROJECT LAYOUT SHEET #5	PROJECT NAME: RUTLAND CITY - PROCTOR
	PROJECT NUMBER: STP 2728(II)
	FILE NAME: p07d282.dgn
	IPARM FILE: p07d282105.I
	PLOT DATE: 7/19/2013
	DRAWN BY: W.G.P.
	CHECKED BY: J.P.S.
	SHEET 50 OF 392

FILE NAME: I:\17762\ACADD\WSTIN\STP 2728\p07d282.dwg - rml_05.dgn
 DATE/TIME: 7/19/2013 4:49:16
 USER: J.P.S.