

646.406 DURABLE 4 INCH WHITE LINE, RECESSED POLYUREA  
 (ALL LINES WILL INCLUDE EDGE LINE BREAKS AND RADIUS FOR TOWN HIGHWAYS)  
 U.S. BR 4:  
 STA 5+50.00 - STA 11+50.00 EDGE LINE LT & RT  
 STA 8+66.00 - STA 9+80.00 SOLID LANE LINE LT  
 STA 9+80.00 - STA 10+80.00 DOTTED LANE LINE LT  
 RIPLEY ROAD:  
 STA R 0+35.00 - STA R 1+00.00 EDGE LINE LT/RT

646.416 DURABLE 4 INCH YELLOW LINE, RECESSED POLYUREA  
 (ALL LINES WILL INCLUDE C/L BREAKS FOR TOWN HIGHWAYS) S=SOLID, D=DASHED  
 U.S. BR 4:  
 STA 5+50.00 - STA 6+00.00 LT & RT  
 STA 6+00.00 - STA 8+40.00 DOUBLE SOLID MEDIAN LT/RT  
 STA 8+80.00 - STA 10+80.00 DOUBLE SOLID RT  
 STA 9+13.44 DOUBLE SOLID LT, SHEDD PLACE  
 STA 10+80.00 - STA 11+50.00 SOLID/DASH TURN LANE LINES LT/RT  
 RIPLEY ROAD:  
 STA R 0+35.00 - STA R 1+00.00 DOUBLE SOLID LT/RT

646.446 DURABLE 8 INCH WHITE LINE, RECESSED POLYUREA  
 U.S. BR 4:  
 STA 5+58.00 - STA 5+70.00 RT, FIRE HYDRANT, NO PARKING  
 RIPLEY ROAD:  
 STA R 0+43.00 - STA R 0+55.00 RT, FIRE HYDRANT, NO PARKING

646.501 DURABLE CROSSWALK MARKING, TYPE I TAPE  
 U.S. BR 4:  
 STA 9+13.44 LT, SHEDD PLACE

646.602 TEMPORARY 4 INCH WHITE LINE, PAINT  
 (ALL LINES WILL INCLUDE EDGE LINE BREAKS AND RADIUS FOR TOWN HIGHWAYS)  
 U.S. BR 4:  
 STA 5+50.00 - STA 11+50.00 EDGE LINE LT & RT  
 STA 8+66.00 - STA 9+80.00 SOLID LANE LINE LT  
 STA 9+80.00 - STA 10+80.00 DOTTED LANE LINE LT  
 RIPLEY ROAD:  
 STA R 0+35.00 - STA R 1+00.00 EDGE LINE LT/RT

646.612 TEMPORARY 4 INCH YELLOW LINE, PAINT  
 (ALL LINES WILL INCLUDE C/L BREAKS FOR TOWN HIGHWAYS) S=SOLID, D=DASHED  
 U.S. BR 4:  
 STA 5+50.00 - STA 6+00.00 LT & RT  
 STA 6+00.00 - STA 8+40.00 DOUBLE SOLID MEDIAN LT/RT  
 STA 8+80.00 - STA 10+80.00 DOUBLE SOLID RT  
 STA 9+13.44 DOUBLE SOLID LT, SHEDD PLACE  
 STA 10+80.00 - STA 11+50.00 SOLID/DASH TURN LANE LINES LT/RT  
 RIPLEY ROAD:  
 STA R 0+35.00 - STA R 1+00.00 DOUBLE SOLID LT/RT

646.702 TEMPORARY CROSSWALK MARKING, PAINT  
 U.S. BR 4:  
 STA 9+13.44 LT, SHEDD PLACE

646.456 DURABLE 8 INCH YELLOW LINE, RECESSED POLYUREA  
 U.S. BR 4:  
 STA 6+00.00 - STA 8+40.00 HATCHED MEDIAN LT/RT

646.487 DURABLE 24 INCH STOP BAR RECESSED, TYPE I TAPE  
 U.S. BR 4:  
 STA 9+13.44 LT, SHEDD PLACE  
 RIPLEY ROAD:  
 STA R 0+36.00, LT

646.682 TEMPORARY 24 INCH STOP BAR, PAINT  
 U.S. BR 4:  
 STA 9+13.44 LT, SHEDD PLACE  
 RIPLEY ROAD:  
 STA R 0+36.00, LT

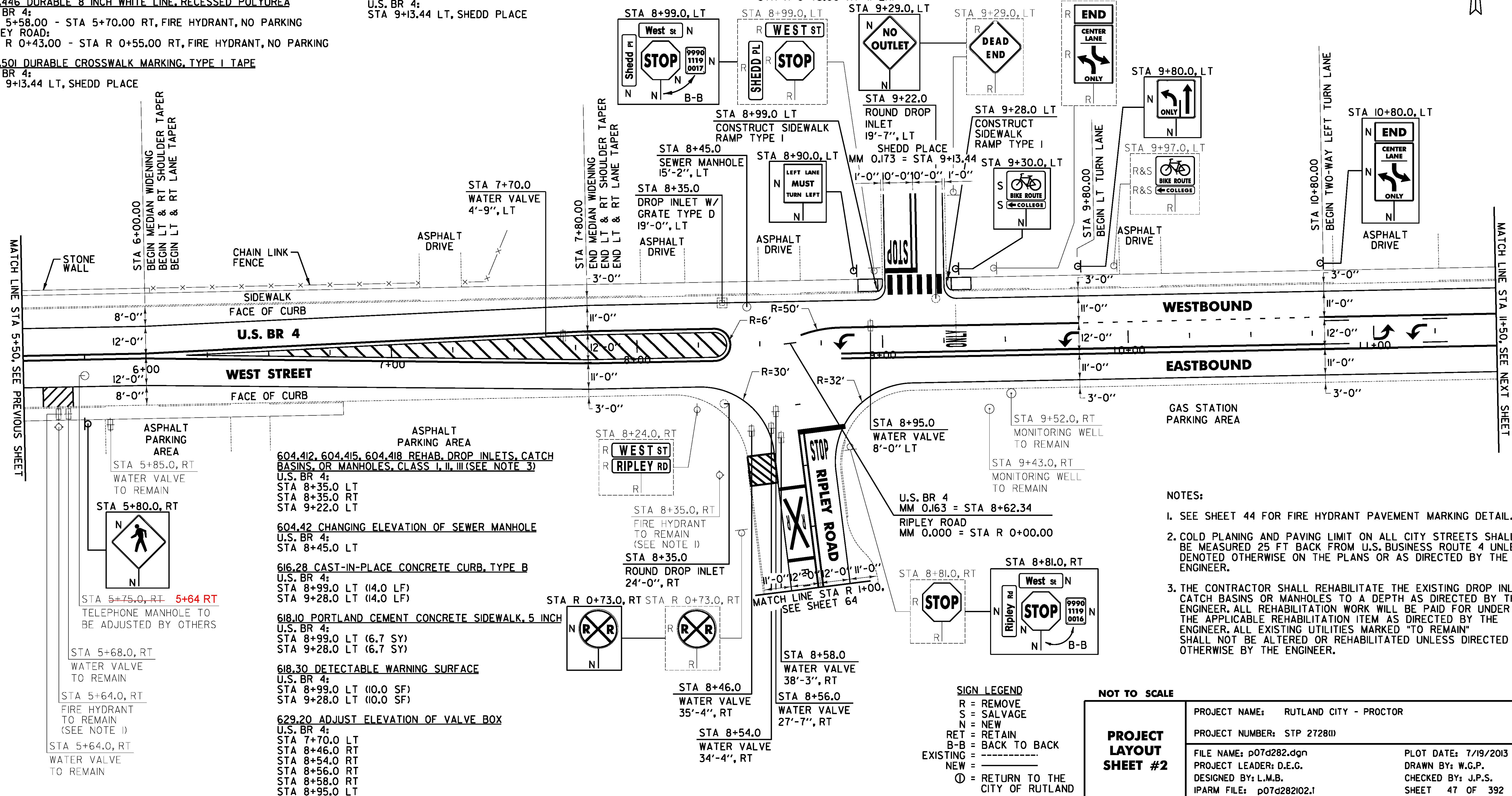
646.712 TEMPORARY RAILROAD CROSSING SYMBOL, PAINT  
 RIPLEY ROAD:  
 STA R 0+73.00 RT (2 EA)

646.511 DURABLE RAILROAD CROSSING SYMBOL, TYPE I TAPE  
 RIPLEY ROAD:  
 STA R 0+73.00 RT (1 EA)

646.491 DURABLE LETTER OR SYMBOL, TYPE I TAPE  
 U.S. BR 4:  
 STA 8+84.30 C/L ARROW (1EA)  
 STA 9+13.44 LT, SHEDD PLACE "S,T,O,P" (4 EA)  
 STA 9+30.00 C/L "O,N,L,Y" (4 EA)  
 STA 9+75.80 C/L ARROW (1EA)  
 STA 11+04.30 C/L ARROW (1EA)  
 STA 11+17.80 C/L ARROW (1EA)  
 RIPLEY ROAD:  
 STA R 0+45.00 LT, "S,T,O,P" (4 EA)

646.692 TEMPORARY LETTER OR SYMBOL, PAINT  
 U.S. BR 4:  
 STA 8+84.30 C/L ARROW (2 EA)  
 STA 9+13.44 LT, SHEDD PLACE "S,T,O,P" (8 EA)  
 STA 9+75.80 C/L ARROW (2 EA)  
 STA 11+04.30 C/L ARROW (2 EA)  
 STA 11+17.80 C/L ARROW (2 EA)  
 RIPLEY ROAD:  
 STA R 0+45.00 LT, "S,T,O,P" (8 EA)

675.50 REMOVING SIGNS AS SHOWN - 12  
 675.60 ERECTING SALVAGED SIGNS AS SHOWN - 2



- 604.412, 604.415, 604.418 REHAB. DROP INLETS, CATCH BASINS, OR MANHOLES, CLASS I, II, III (SEE NOTE 3)  
 U.S. BR 4:  
 STA 8+35.00 LT  
 STA 8+35.00 RT  
 STA 9+22.00 LT
- 604.42 CHANGING ELEVATION OF SEWER MANHOLE  
 U.S. BR 4:  
 STA 8+45.00 LT
- 616.28 CAST-IN-PLACE CONCRETE CURB, TYPE B  
 U.S. BR 4:  
 STA 8+99.00 LT (14.0 LF)  
 STA 9+28.00 LT (14.0 LF)
- 618.10 PORTLAND CEMENT CONCRETE SIDEWALK, 5 INCH  
 U.S. BR 4:  
 STA 8+99.00 LT (6.7 SY)  
 STA 9+28.00 LT (6.7 SY)
- 618.30 DETECTABLE WARNING SURFACE  
 U.S. BR 4:  
 STA 8+99.00 LT (10.0 SF)  
 STA 9+28.00 LT (10.0 SF)
- 629.20 ADJUST ELEVATION OF VALVE BOX  
 U.S. BR 4:  
 STA 7+70.00 LT  
 STA 8+46.00 RT  
 STA 8+54.00 RT  
 STA 8+56.00 RT  
 STA 8+58.00 RT  
 STA 8+95.00 LT

**SIGN LEGEND**  
 R = REMOVE  
 S = SALVAGE  
 N = NEW  
 RET = RETAIN  
 B-B = BACK TO BACK  
 EXISTING = - - - - -  
 NEW = \_\_\_\_\_  
 ⊕ = RETURN TO THE CITY OF RUTLAND

- NOTES:**
- SEE SHEET 44 FOR FIRE HYDRANT PAVEMENT MARKING DETAIL.
  - COLD PLANING AND PAVING LIMIT ON ALL CITY STREETS SHALL BE MEASURED 25 FT BACK FROM U.S. BUSINESS ROUTE 4 UNLESS DENOTED OTHERWISE ON THE PLANS OR AS DIRECTED BY THE ENGINEER.
  - THE CONTRACTOR SHALL REHABILITATE THE EXISTING DROP INLETS, CATCH BASINS OR MANHOLES TO A DEPTH AS DIRECTED BY THE ENGINEER. ALL REHABILITATION WORK WILL BE PAID FOR UNDER THE APPLICABLE REHABILITATION ITEM AS DIRECTED BY THE ENGINEER. ALL EXISTING UTILITIES MARKED "TO REMAIN" SHALL NOT BE ALTERED OR REHABILITATED UNLESS DIRECTED OTHERWISE BY THE ENGINEER.

<b>PROJECT LAYOUT SHEET #2</b>	PROJECT NAME: RUTLAND CITY - PROCTOR
	PROJECT NUMBER: STP 2728(1)
	FILE NAME: p07d282.dgn
	IPARM FILE: p07d282102.1
	PLOT DATE: 7/19/2013
	DRAWN BY: W.G.P.
	DESIGNED BY: L.M.B.
	SHEET 47 OF 392

FILE NAME: I:\17752\CA000\WSTIN\STP 2728\p07d282.dgn - rml\_02.dgn  
 DATE/TIME: 7/19/2013 4:49:16  
 USER: