

RECEIVED

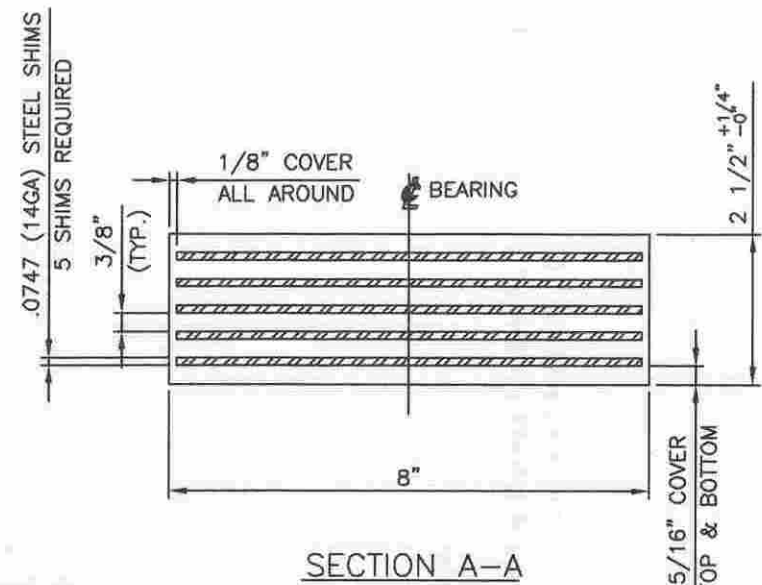
CHK'D BY

JUN 28 2007

APPROVED

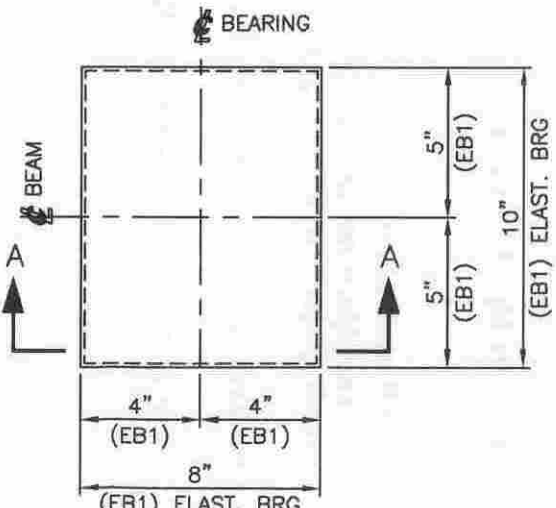
BY RBW

DATE 6/29/07



60 LAMINATED ELASTOMERIC BEARING PADS, EB1
 LAMINATED ELASTOMERIC BEARING 2 1/2" x 8" x 10"
 IN ACCORDANCE WITH SECTION 731.03 OF THE STATE OF
 VERMONT AGENCY OF TRANSPORTATION STANDARD
 SPECIFICATION FOR CONSTRUCTION AND MAINTENANCE OF
 HIGHWAYS, STREETS AND BRIDGES.
 ELASTOMER - 60 DUROMETER NEOPRENE GR. 3
 SHIMS - KASHTO M270 GR 50

Design Load/Brg = 59K



ELASTOMERIC BEARINGS
 TYPE: LAMINATED

STATE	COUNTY	PROJECT NAME
VT	N/A	SPRINGFIELD
PROJECT NO.: ST CULV(5)		
DYNAMIC RUBBER		1501 ROCKY RIDGE RD. ATHENS, TX 75751
A DIVISION OF COSMEC, INC.		
SCALE: NONE	DRAWN BY: SWT DATE: 6/26/2007	CHECKED BY: KYW DATE: 6/28/2007
SHEET 1 OF 1	DRP NO. 9516	
CUSTOMER	DRAWING NUMBER	REV.
J.A. McDONALD, INC.	9516-D1	0

REV.	DESCRIPTION	BY	DATE	CHK'D	DATE