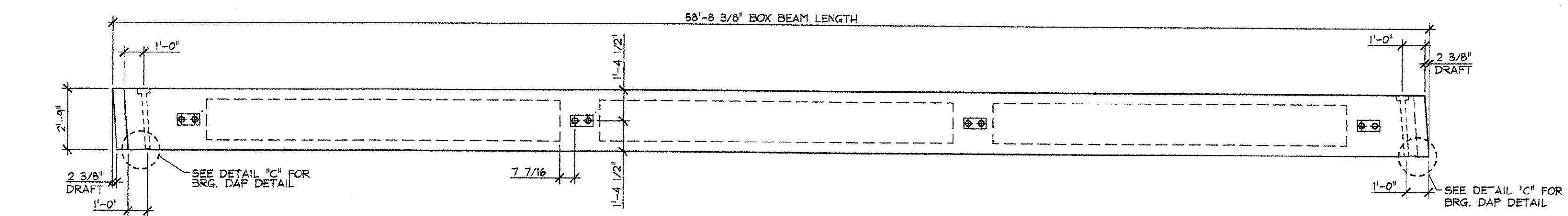
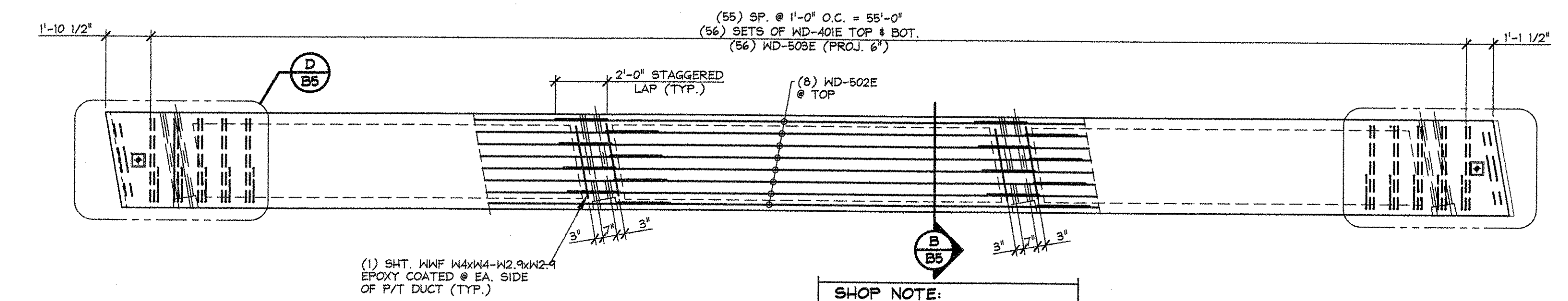


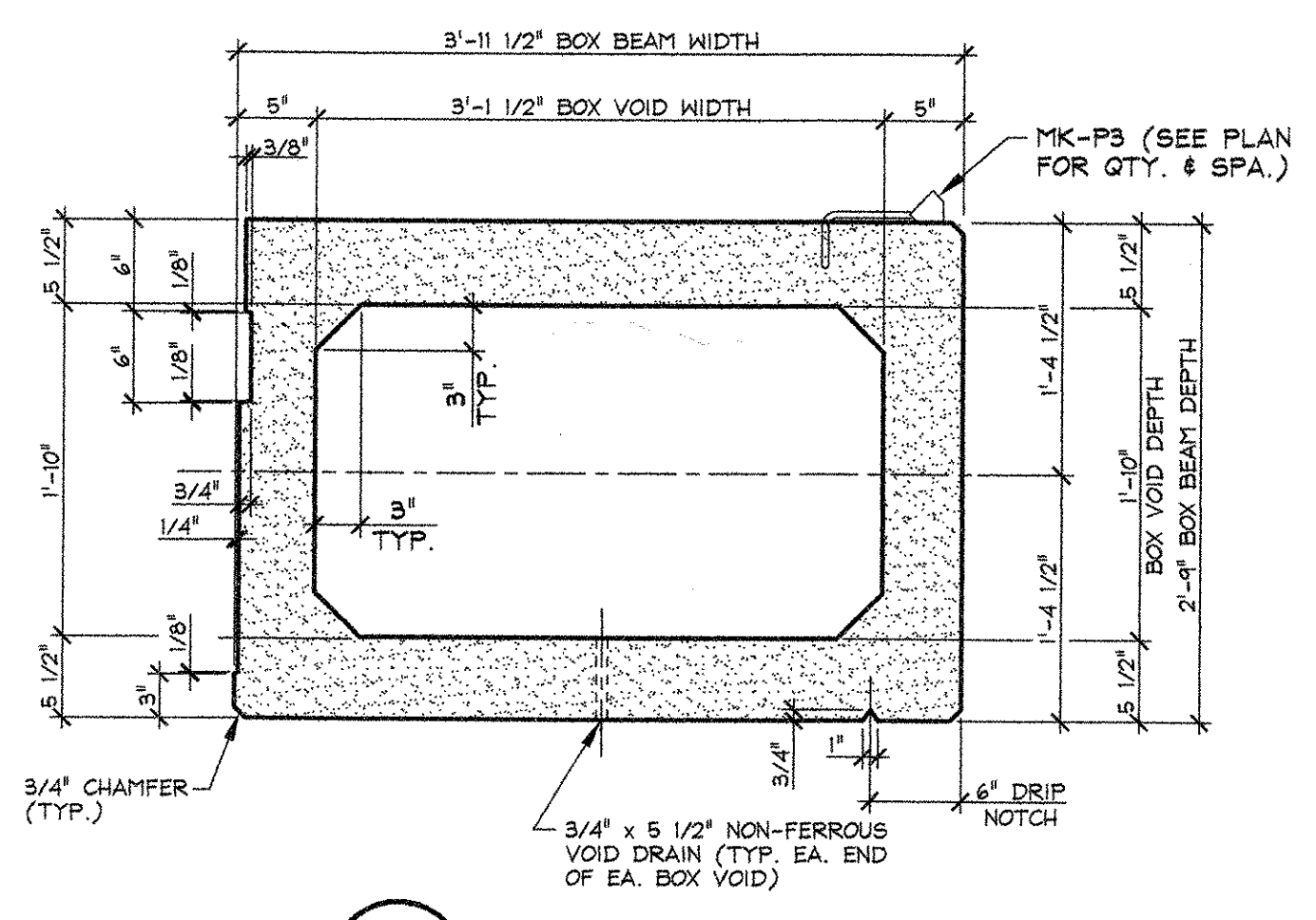
**1 DIMENSIONAL PLAN VIEW IN FORM**  
B5  
1/4" = 1'-0"



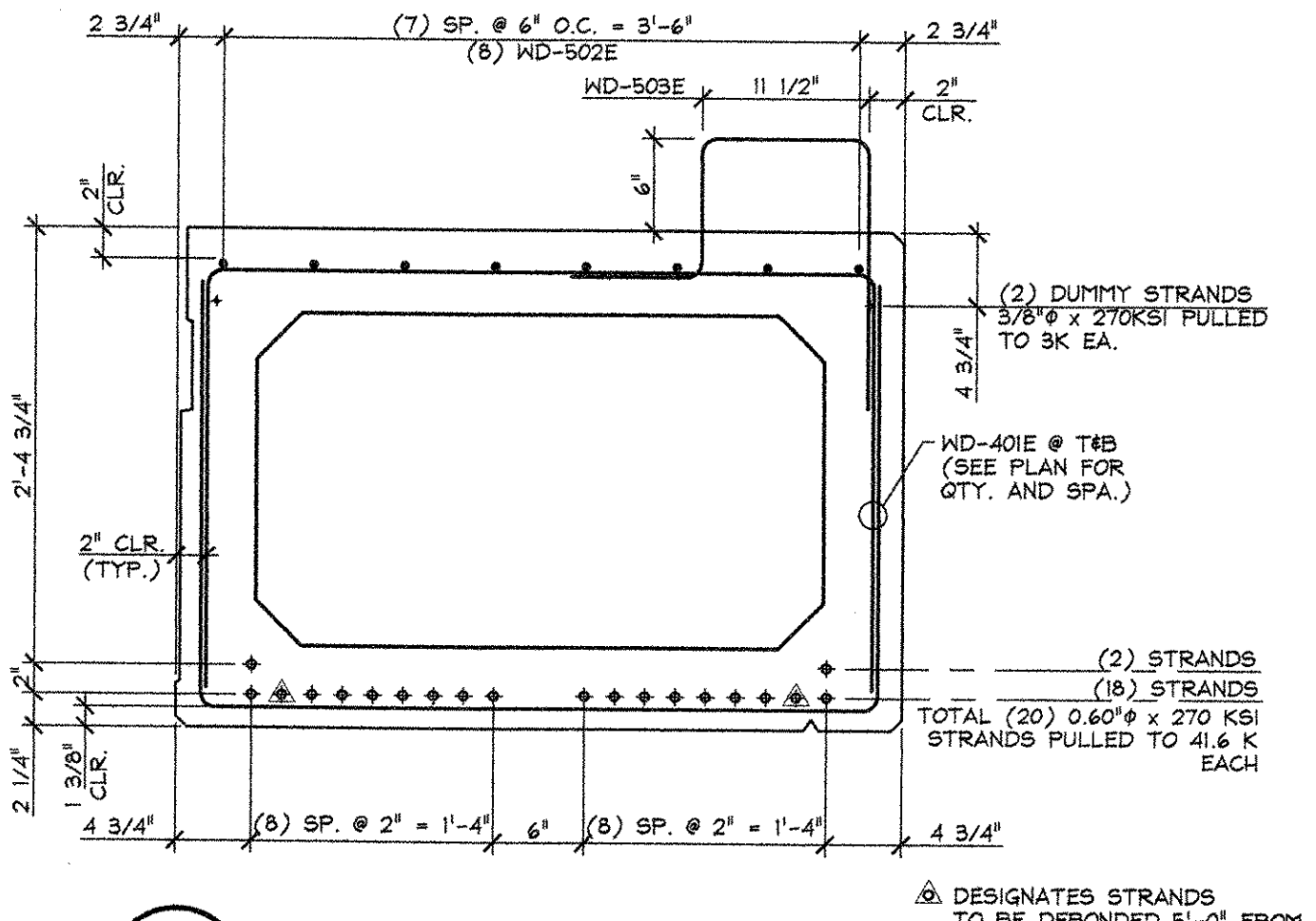
**2 ELEVATION VIEW IN FORM**  
B5  
1/4" = 1'-0"



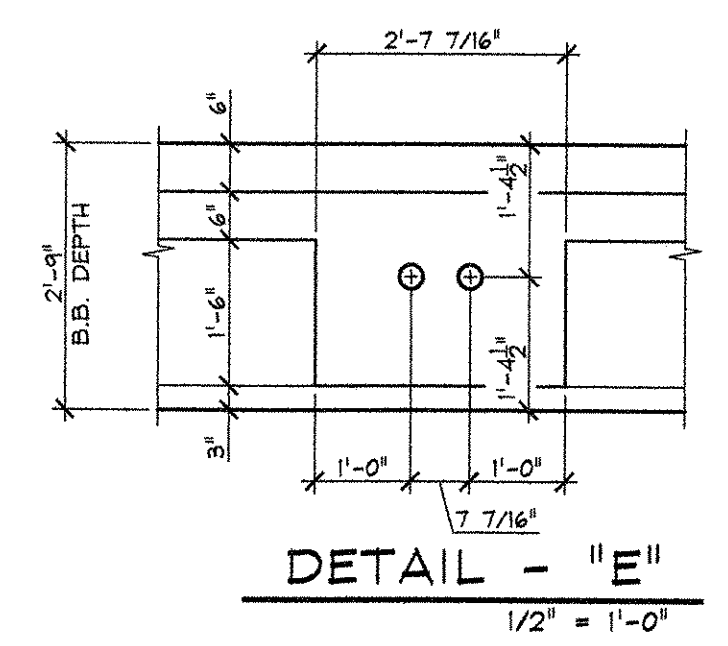
**3 REINFORCING PLAN VIEW IN FORM**  
B5  
1/4" = 1'-0"



**A DIMENSIONAL SECTION**  
B5  
1" = 1'-0"

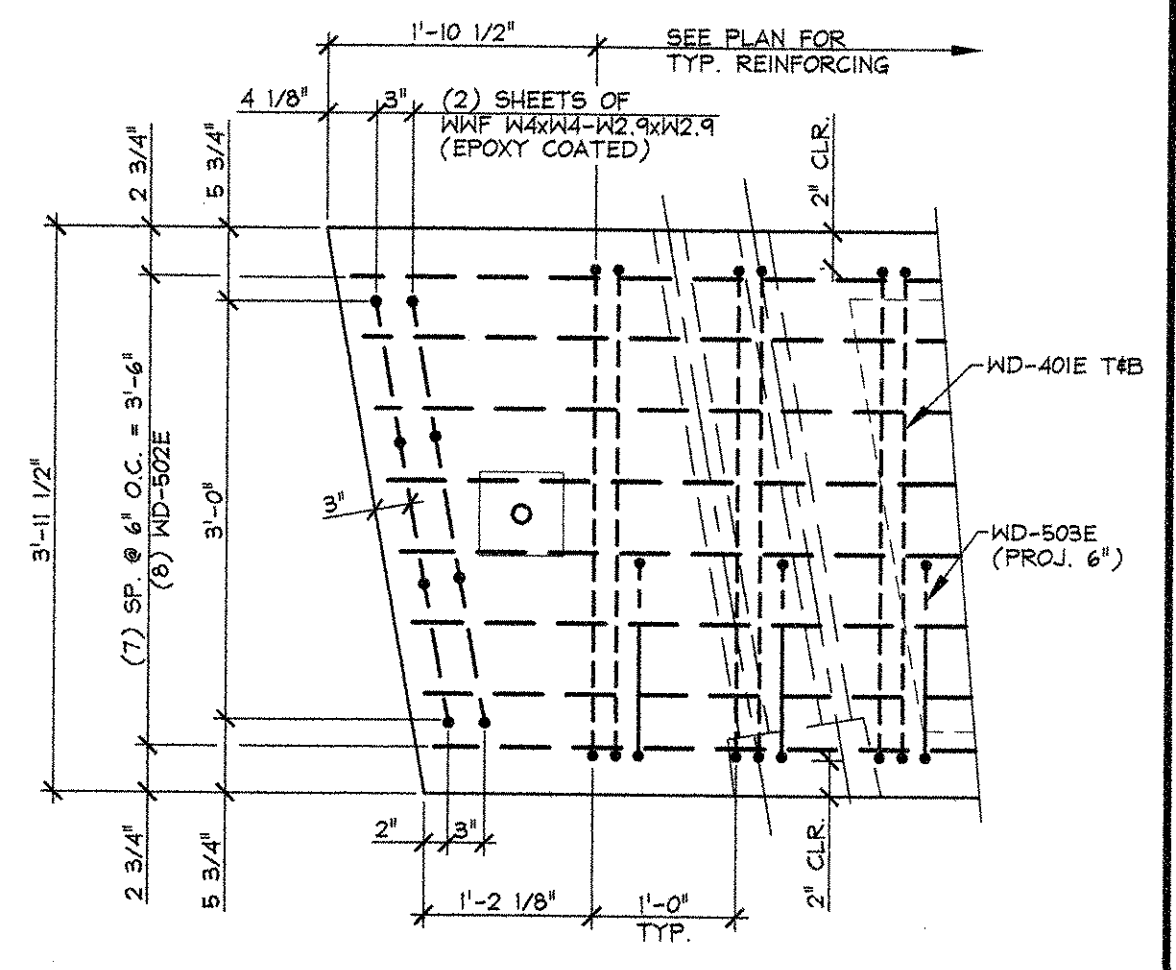
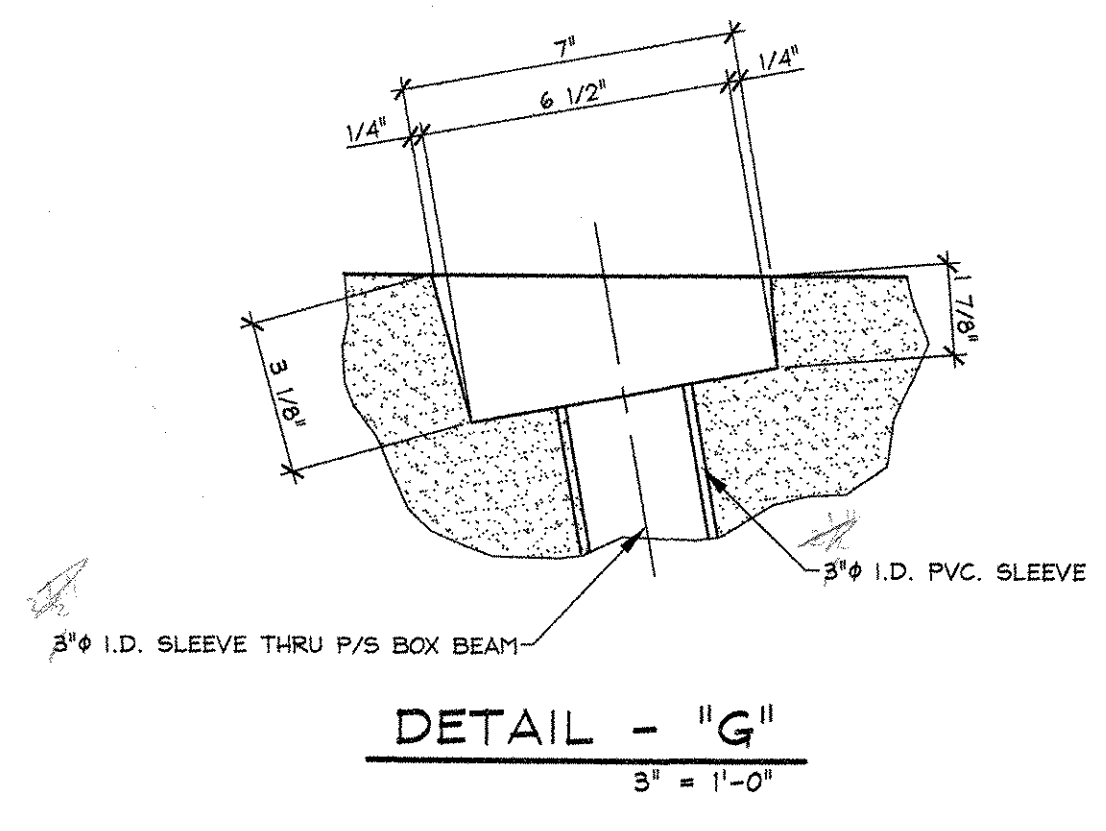
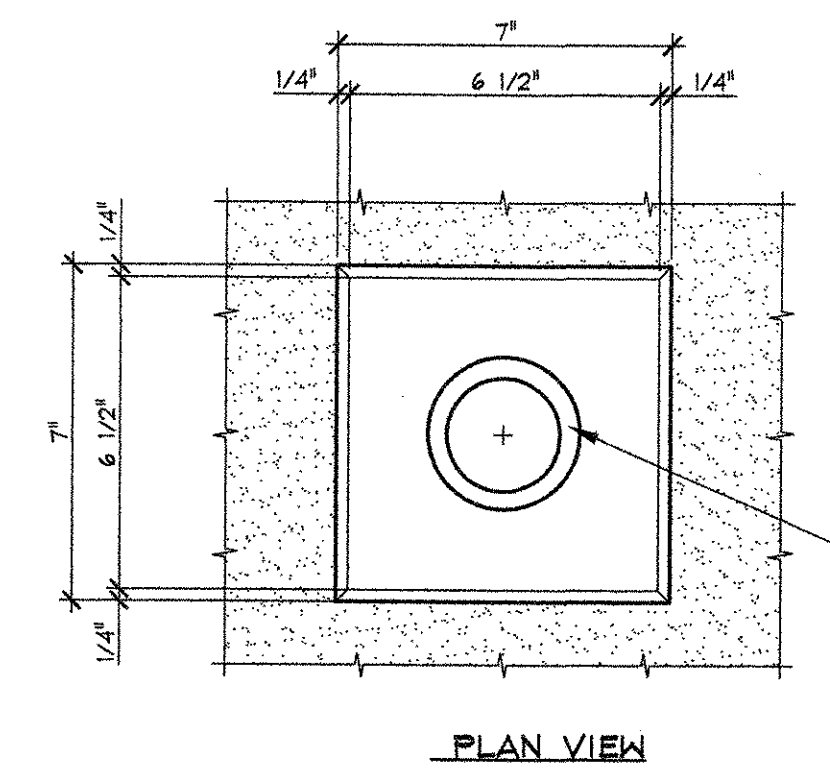
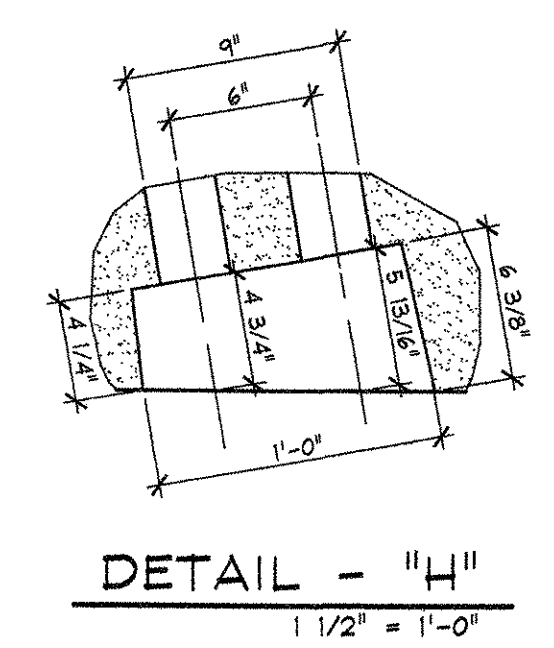


**B REINFORCING SECTION**  
B5  
1" = 1'-0"

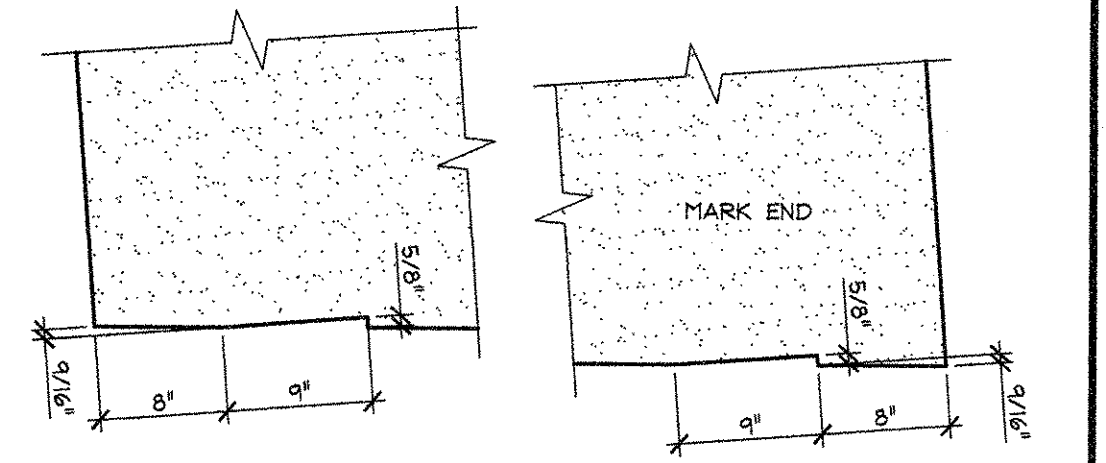


**DETENSIONING SCHEDULE**  
N.T.S.

1	2	3	4	5	6	7	8	9	10	11	12	13	14	15	16	17	18	19	20
---	---	---	---	---	---	---	---	---	----	----	----	----	----	----	----	----	----	----	----



**D END BLOCK REINFORCING DETAIL**  
B5  
1" = 1'-0"



**C BRG. BLOCKOUT DETAILS**  
B5  
1" = 1'-0"

MARK:	SP-5	QTY.:	1	WT.:	27.58 T	VOL.:	13.62 cy
MATERIAL LIST / VOIDED BOX BEAM							
ITEM	MARK	DESCRIPTION				QTY.	
1	401	#4 BENT BAR (EPOXY COATED)				112	
2	502	#5 x 57'-8" (W/ (3) 2'-0" STAGGERED LAPS)				8	
3	503	#5 BENT BAR (EPOXY COATED)				56	
4							
5							
6							
7							
8							
9							
10							
11							
12							
13		WKF W4W4-W2.9W2.9 [2'-0"x3'-0"] (EPOXY COATED)				8	
14	MK-P3	DAYTON C-24 TYPE 4-APR PRESS-STEEL PRECAST HALF HANGER (GALV.)				15	
15		3'-1 1/2" x 1'-10" x 15'-9 1/8" BOX VOID				3	
16		3/4" x 5 1/2" NON-FERROUS VOID DRAINS				6	
17		DOUBLE 1/2" STRANDS LIFTING LOOPS				4	
18							

APPROVAL STAMP:

RECEIVED  
 CK'D BY DRP, CK'D BY CUC  
 JUL 10 2007  
 RESUBMIT APPROVED  
 BY [Signature] DATE 7/12/07

**J.P. CARRARA & SONS INC.**  
 Precast & Prestress Manufacturer  
 2464 CASE ST., WOODLERY, VERMONT 05753 Phone: (802)388-6361 Fax: (802)388-9010

**J.A. McDONALD, INC.**  
 CONTRACTOR  
 LYNDON, VERMONT

STATE OF VERMONT A.O.T.  
 COUNTY OF WINDSOR

TOWN OF SPRINGFIELD  
 VERMONT ROUTE 11  
 BRIDGE NO.: 55 PROJECT NO.: ST CULV(5)

BOX BEAM SECTIONS & DETAILS

DATE: JUNE 20, 2007  
 SCALE: NOTED  
 CHKD: D.F. DFTM: T.J.D  
 JOB NO: 23258-007  
 DWG. NO: B5