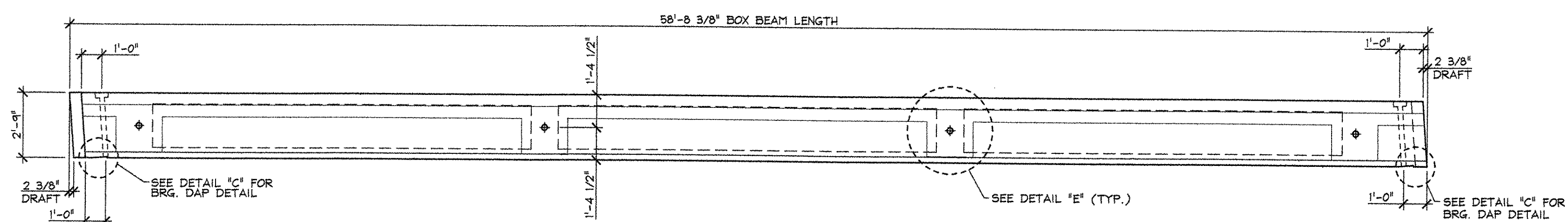
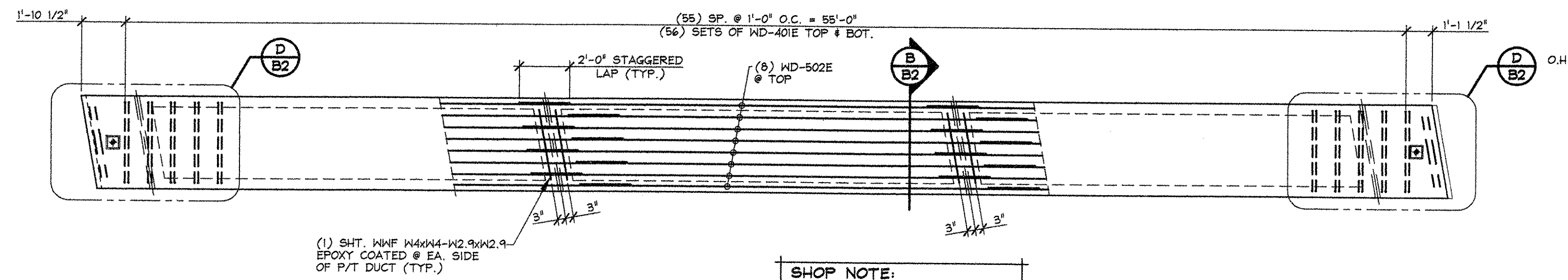


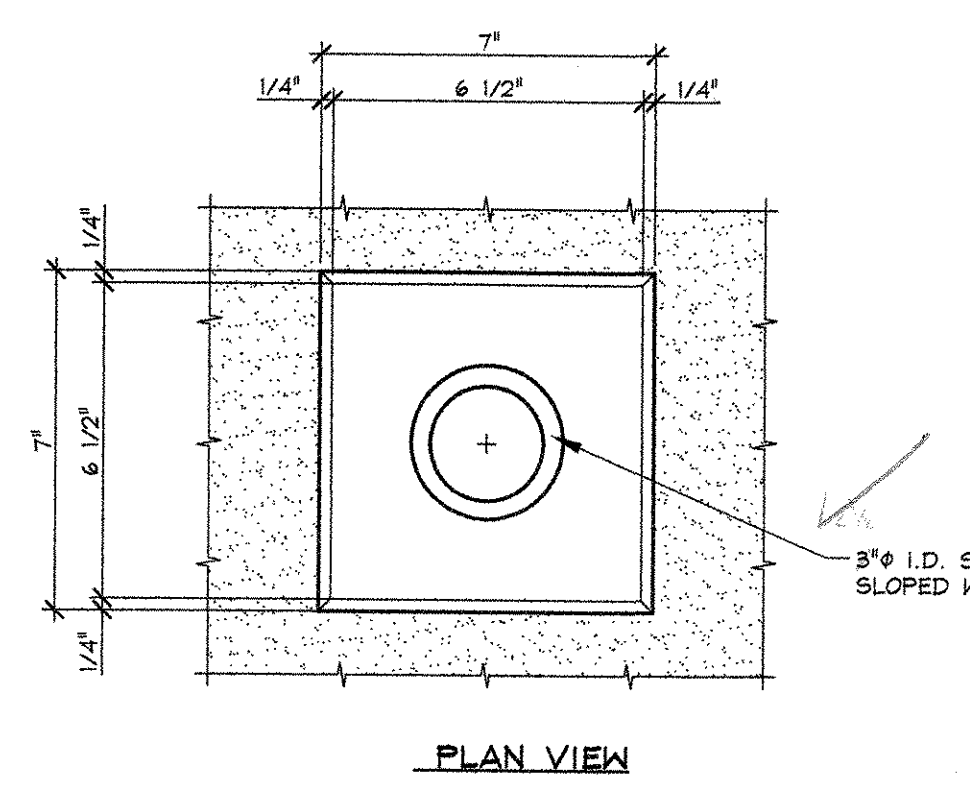
1 DIMENSIONAL PLAN VIEW IN FORM
B2
1/4" = 1'-0"



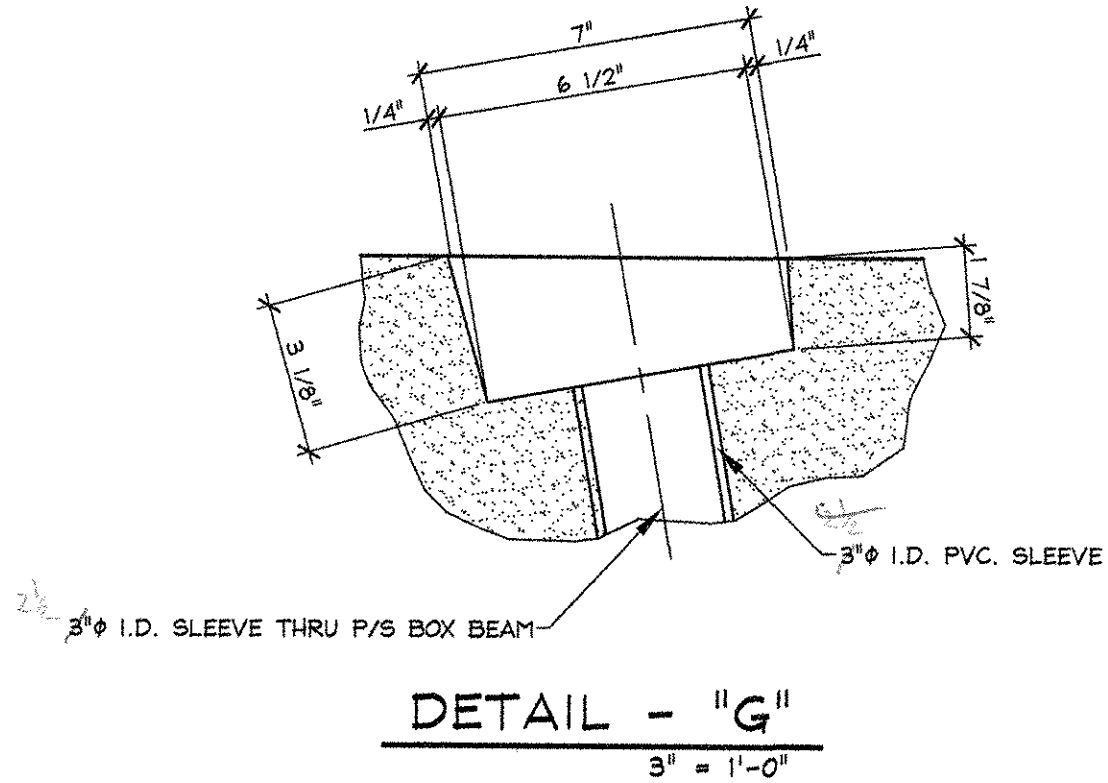
2 ELEVATION VIEW IN FORM
B2
1/4" = 1'-0"



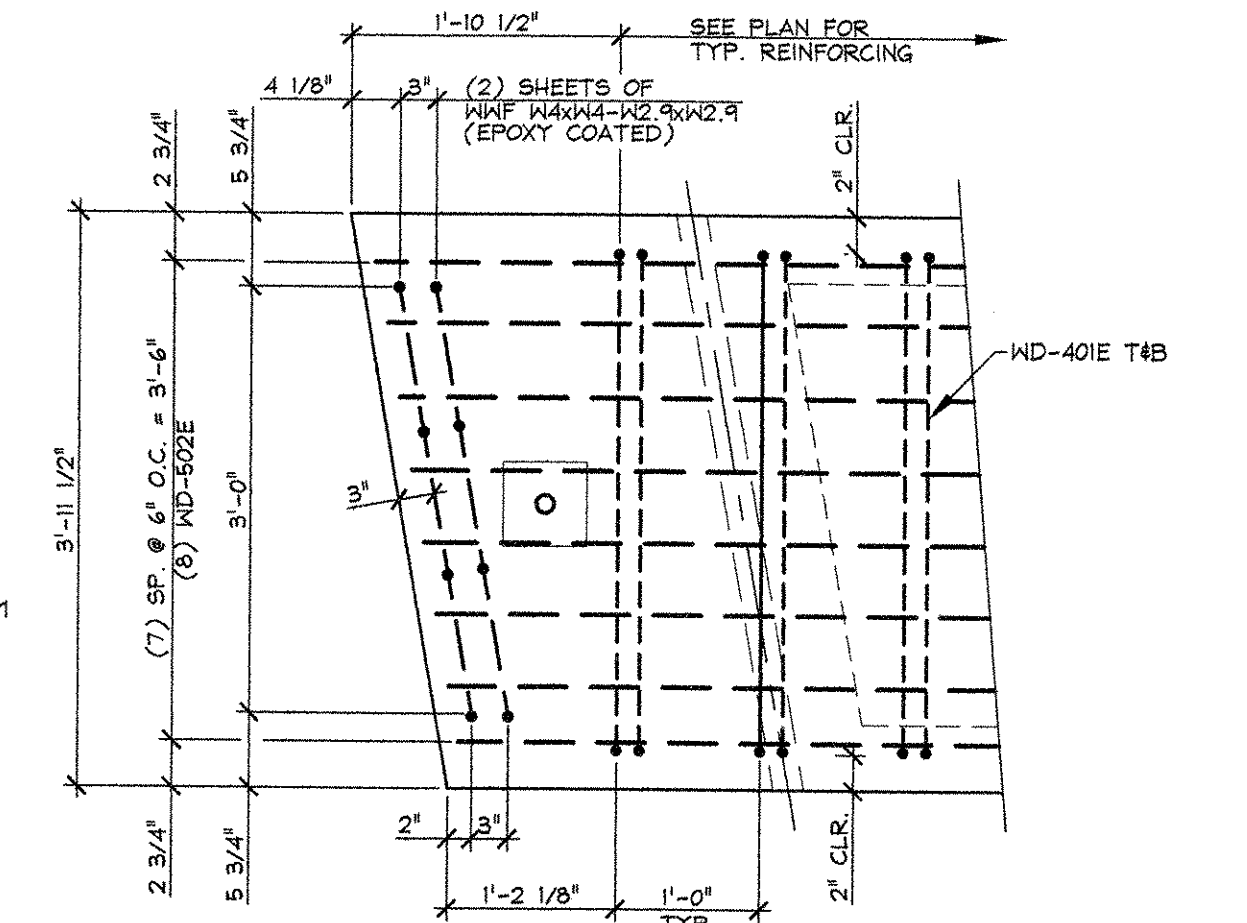
3 REINFORCING PLAN VIEW IN FORM
B2
1/4" = 1'-0"



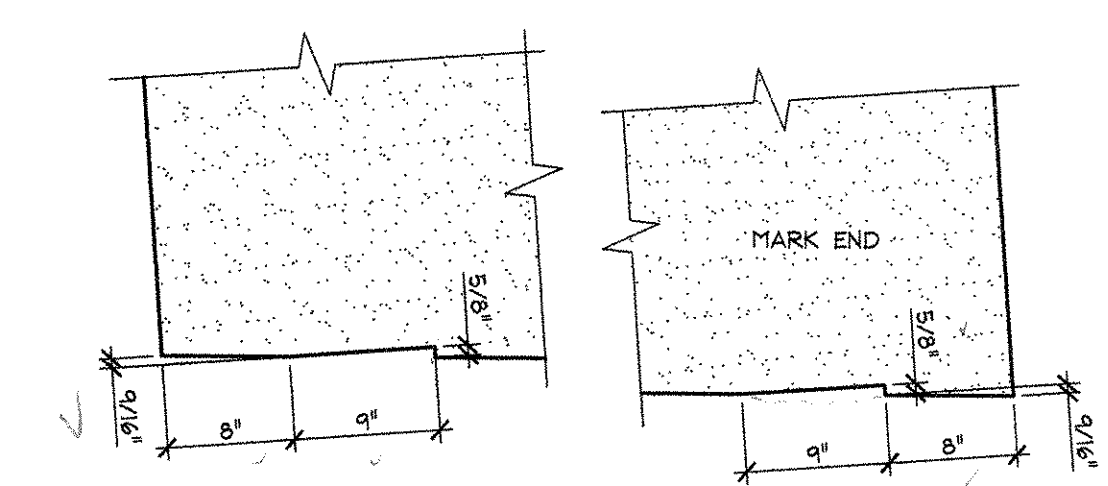
PLAN VIEW



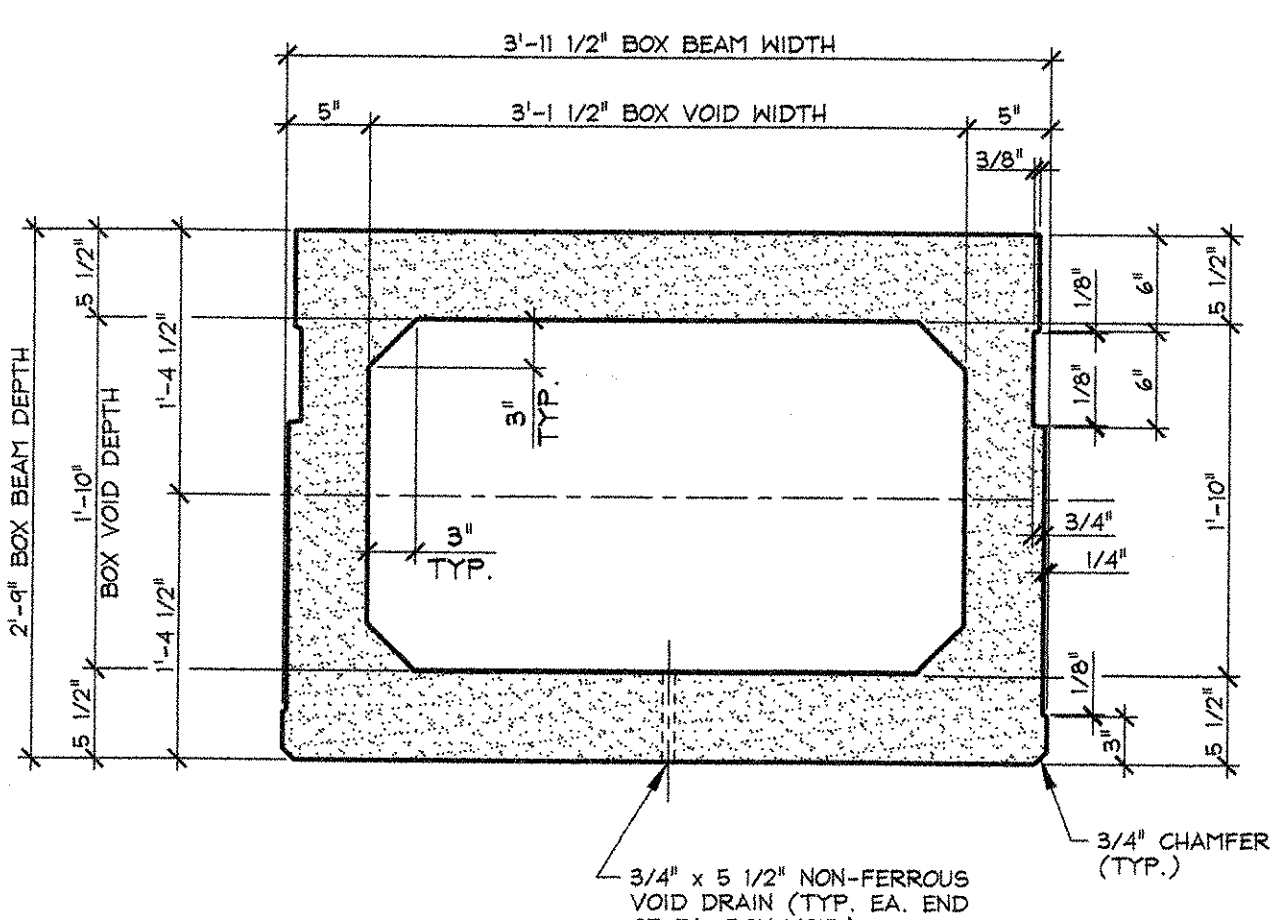
DETAIL - "G"
3" = 1'-0"



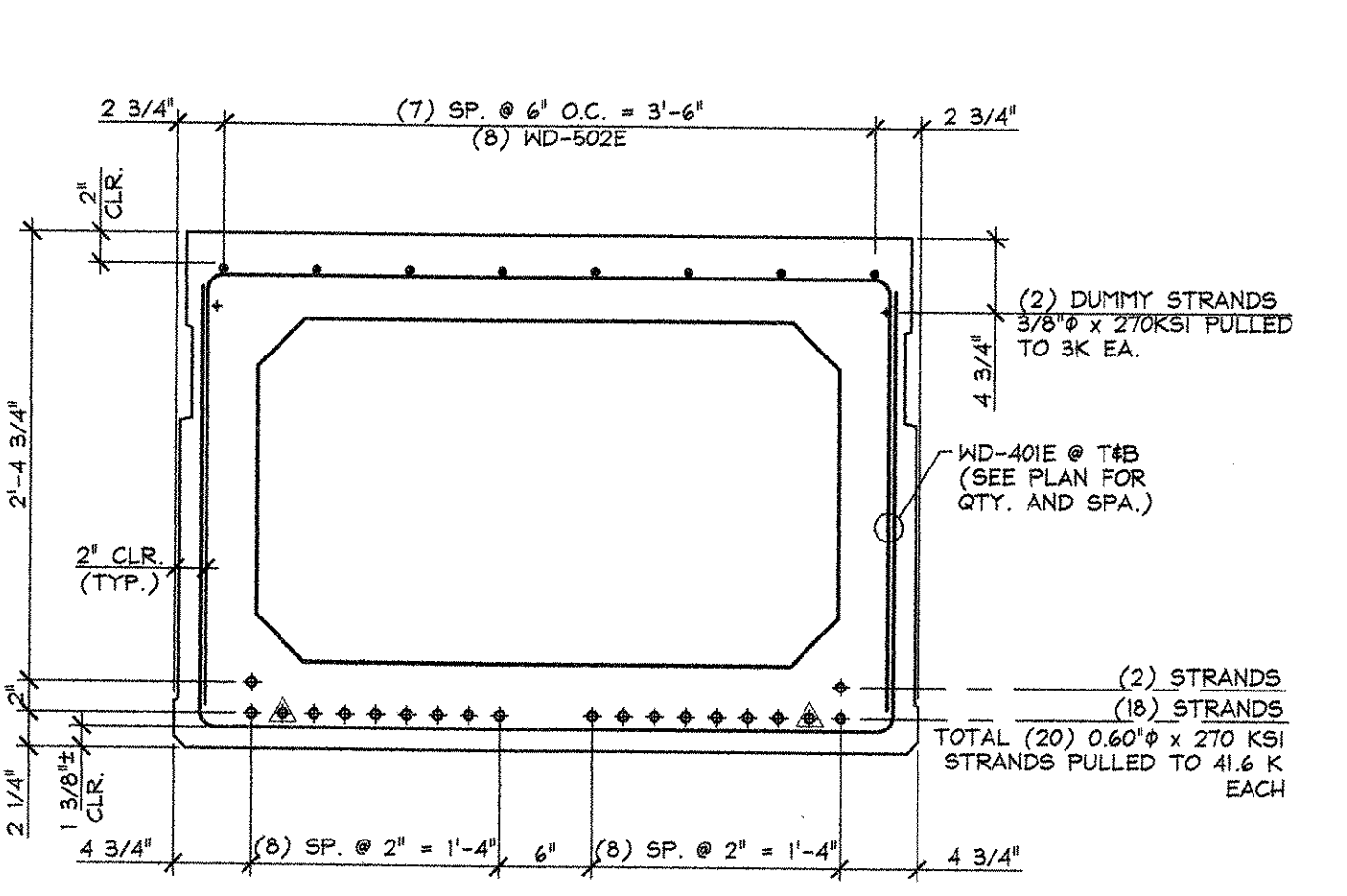
D END BLOCK REINFORCING DETAIL
B2
1" = 1'-0"



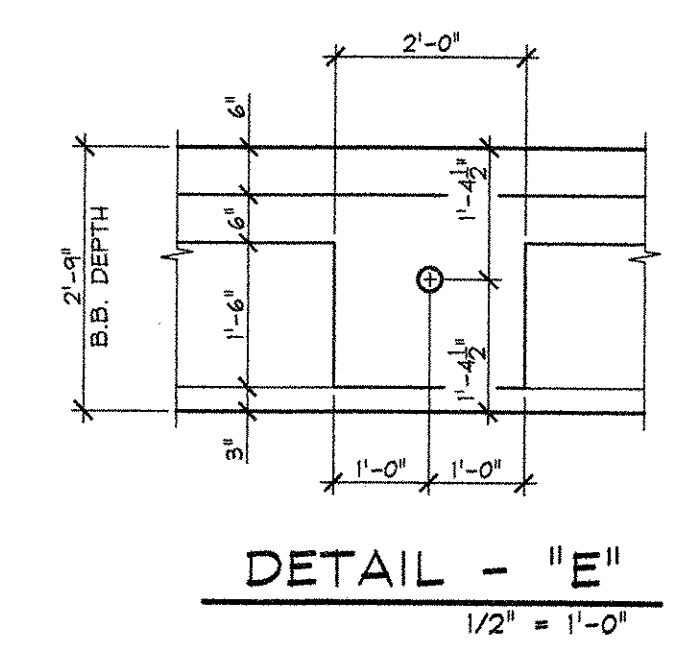
C BRG. BLOCKOUT DETAILS
B2
1" = 1'-0"



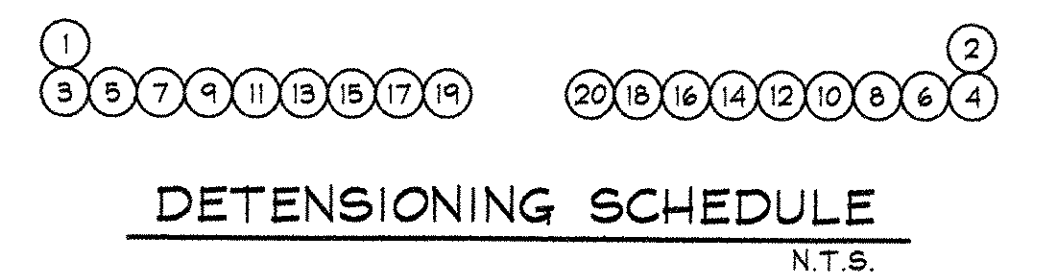
A DIMENSIONAL SECTION
B2
1" = 1'-0"



B REINFORCING SECTION
B2
1" = 1'-0"



DETAIL - "E"
1/2" = 1'-0"



DETENSING SCHEDULE
N.T.S.

MARK: SP-2 QTY.: 6 WT.: 26.85 T VOL.: 13.26 cy			
MATERIAL LIST / VOIDED BOX BEAM			
ITEM	MARK	DESCRIPTION	QTY.
1	401	#4 BENT BAR (EPOXY COATED)	112
2	502	#5 x 57'-8" (W/ (3) 2'-0" STAGGERED LAPS)	8
3			
4			
5			
6			
7			
8			
9			
10			
11			
12			
13			
14			
15		WNF W4X4-H2.9X2.9 [2'-0" x 3'-0"] (EPOXY COATED)	8
17		3'-1 1/2" x 1'-10" x 16'-4 5/16" BOX VOID	3
18		3/4" x 5 1/2" NON-FERROUS VOID DRAINS	6
19		DOUBLE 1/2" STRANDS LIFTING LOOPS	4
20			

APPROVAL STAMP:
RECEIVED
OCT'D BY DRP OCT'D BY CUC
JUL 10 2007
RESUBMIT APPROVED
BY [Signature] DATE 7/10/07

J.P. CARRARA & SONS INC.
Precast & Prestress Manufacturer
2444 CASE STR., MIDDLEBURY, VERMONT 05753 Phone: (802)388-6361 Fax: (802)388-9010

J.A. McDONALD, INC.
CONTRACTOR
LYNDON, VERMONT

STATE OF VERMONT A.O.T.
COUNTY OF WINDSOR

TOWN OF SPRINGFIELD
VERMONT ROUTE 11
BRIDGE NO.: 55 PROJECT NO.: ST CULV(5)

BOX BEAM SECTIONS & DETAILS

DATE: JUNE 20, 2007
SCALE: NOTED
CHKD: D.F. DFTM: T.J.D
JOB NO: 23258-007
DWG. NO: B2