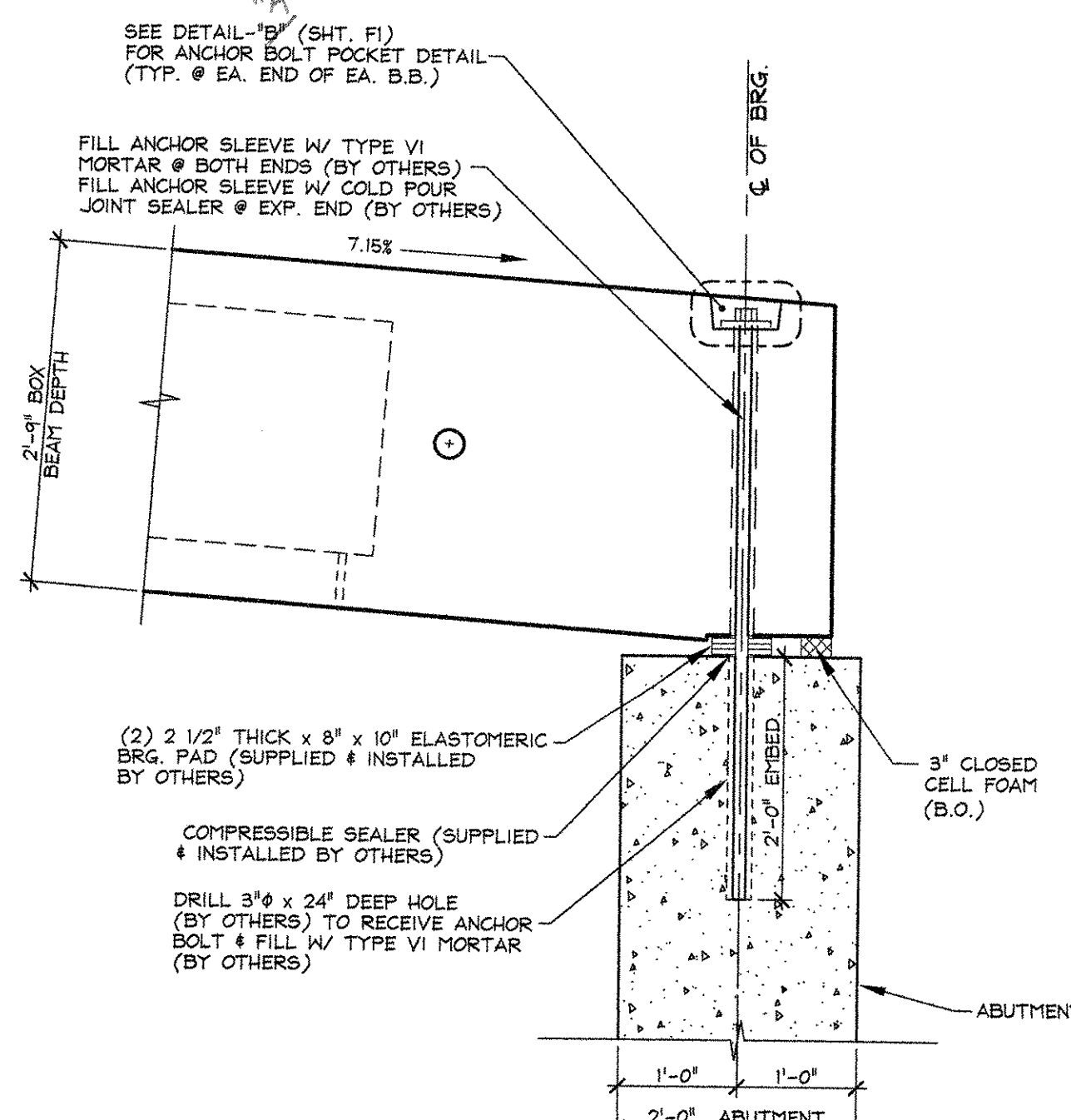
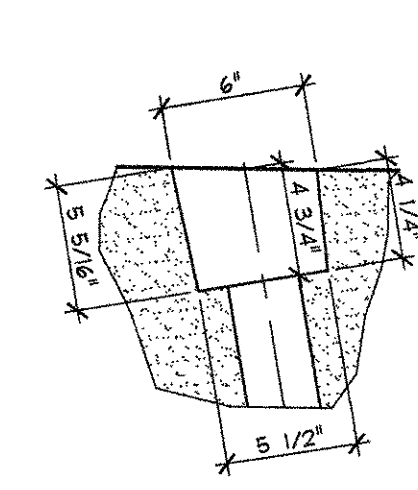


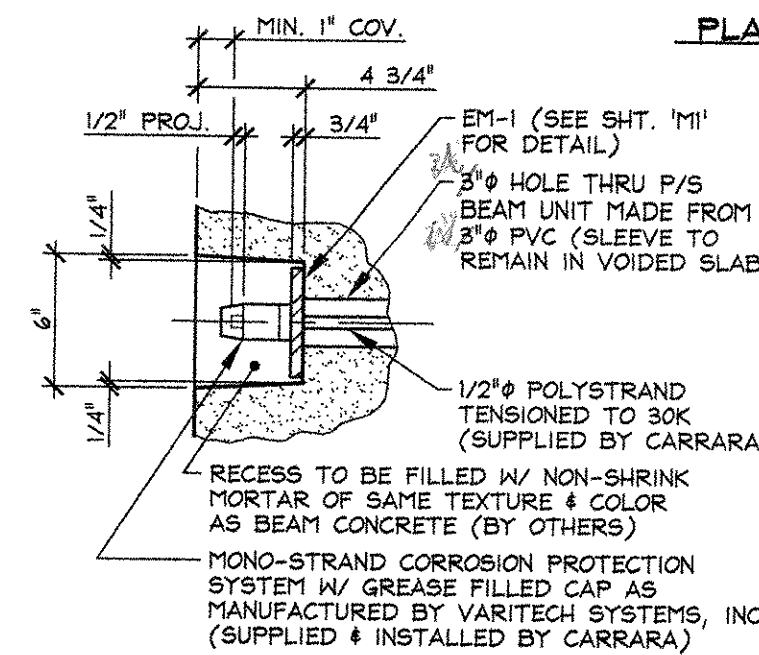
A BEARING SECTION
F2
3/4" = 1'-0"



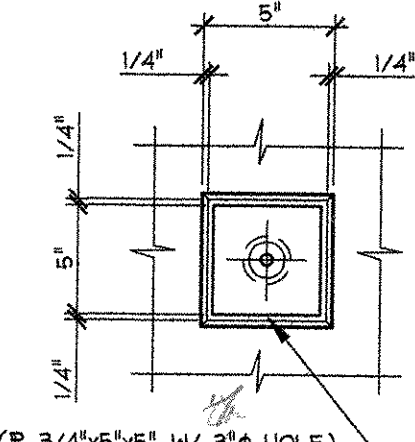
B BEARING SECTION
F2
3/4" = 1'-0"



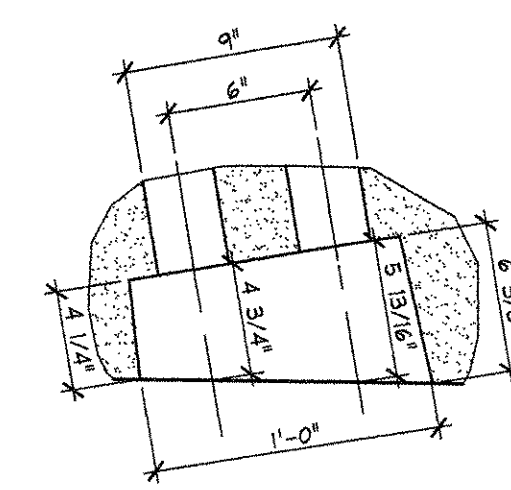
PLAN OF POCKET



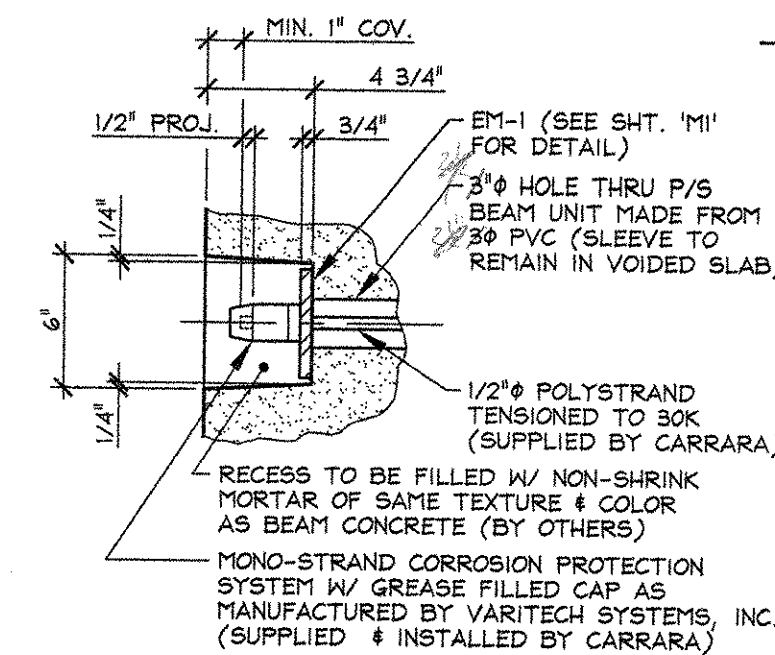
SECTION AT CENTERLINE



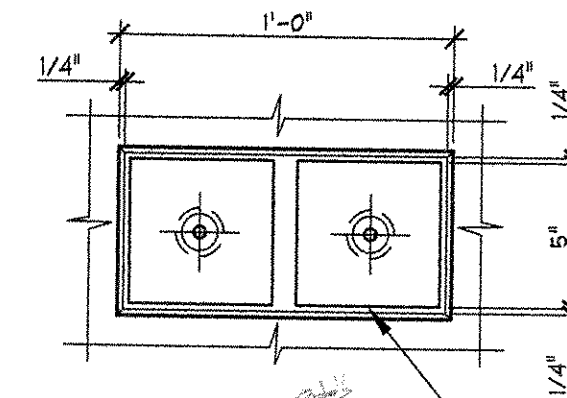
FASCIA ELEVATION



PLAN OF POCKET



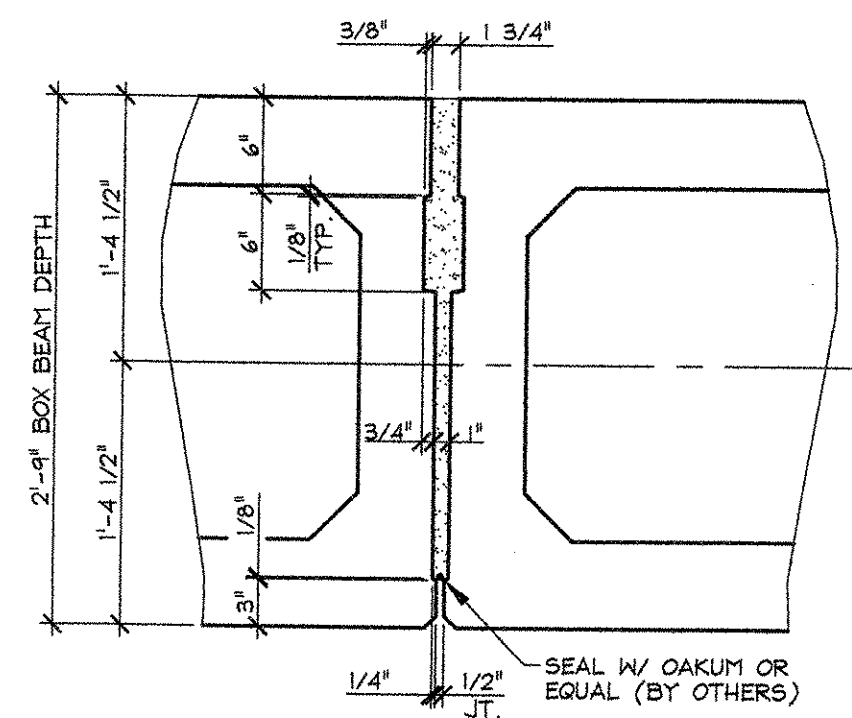
SECTION AT CENTERLINE



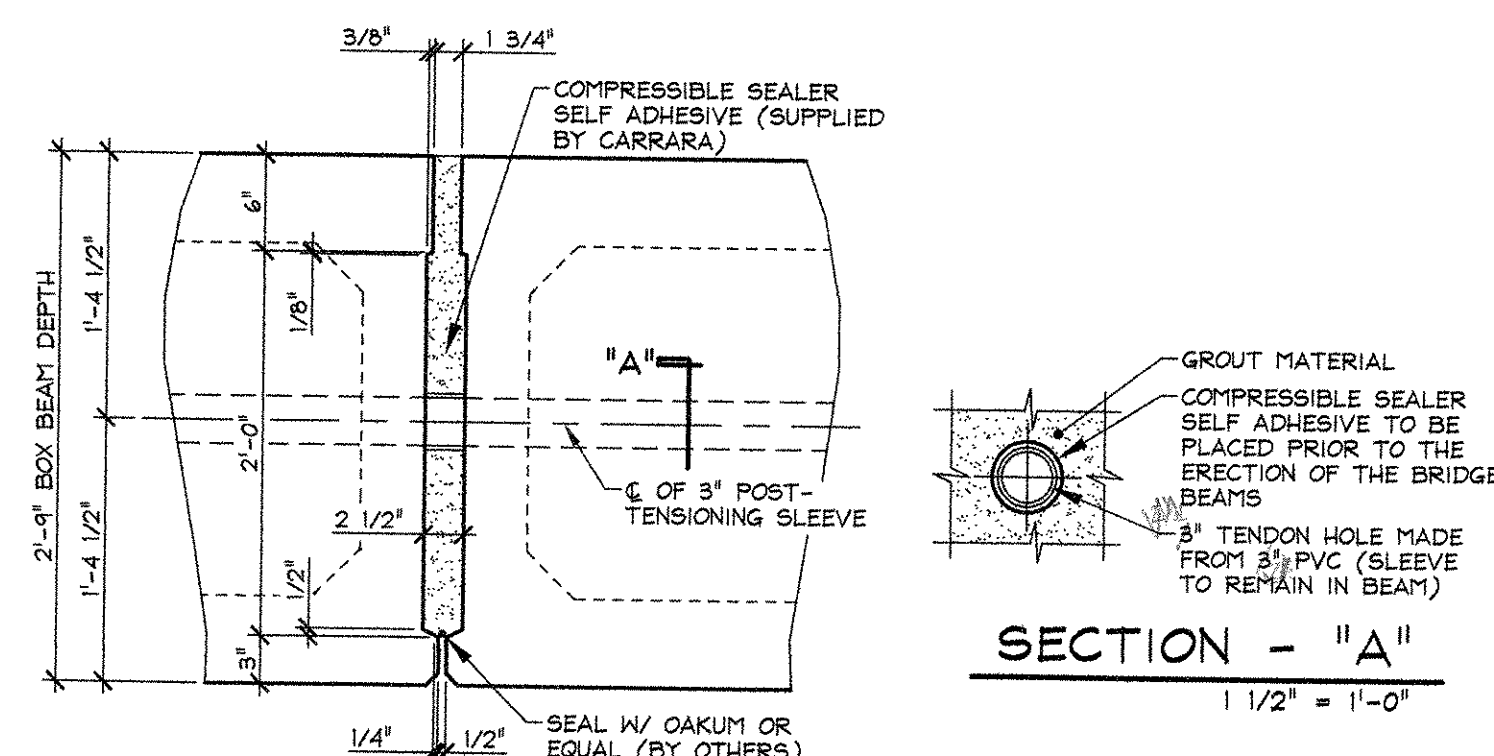
FASCIA ELEVATION

DETAIL - "B"
1 1/2" = 1'-0"

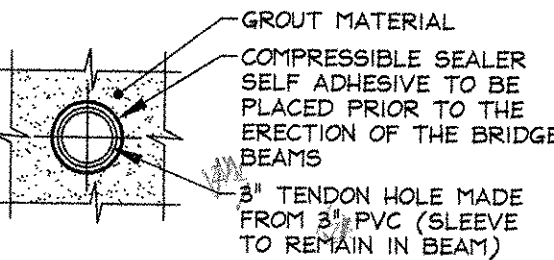
DETAIL - "C"
1 1/2" = 1'-0"



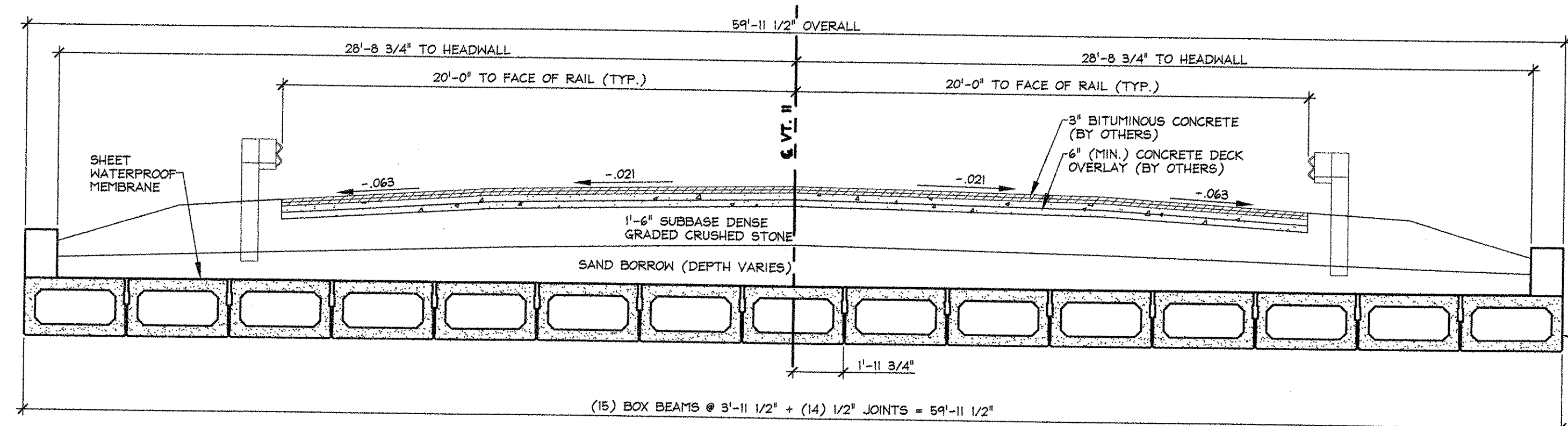
C TYP. SHEAR KEY SECTION
F2
1" = 1'-0"



D SHEAR KEY SECTION @ P.T. SLEEVE
F2
1" = 1'-0"



SECTION - "A"
1 1/2" = 1'-0"



2 TRANSVERSE SECTION
F2
1/2" = 1'-0"

RECEIVED
CK'D BY *DRP* OK'D BY *CAC*
JUL 10 2007
RESUBMIT APPROVED AS NOTED
BY *RLW* DATE *7/10/07*

APPROVAL STAMP:

J.P. CARRARA & SONS INC. Precast & Prestress Manufacturer 2464 OISE ST., MOORESBURY, VERMONT 05753 Phone: (802)388-6361 Fax: (802)388-9010		J.A. McDONALD, INC. CONTRACTOR LYNDON, VERMONT	
STATE OF VERMONT A.O.T. COUNTY OF WINDSOR		DATE: JUNE 20, 2007	
TOWN OF SPRINGFIELD VERMONT ROUTE 11 BRIDGE NO.: 55 PROJECT NO.: ST CULV(5)		SCALE: NOTED	CHKD: D.F. DFTM: T.J.D.
SUPERSTRUCTURE TRANSVERSE SECTION & DETAILS		JOB NO: 23258-007	DWG. NO: F2

F:\VT-Bridges\23258-007 Springfield Bridge\23258-F2.dwg, 7/6/2007 11:51:07 AM