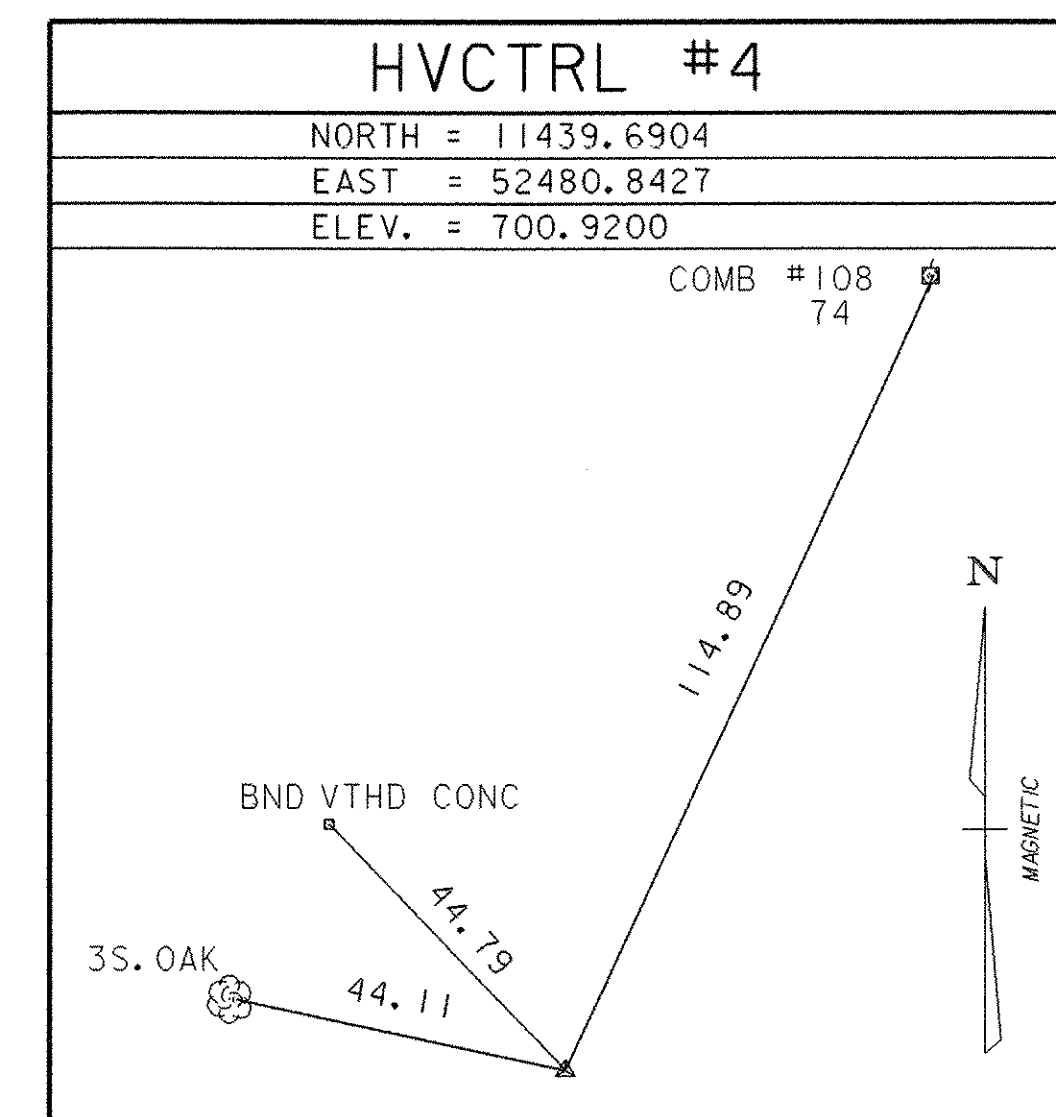
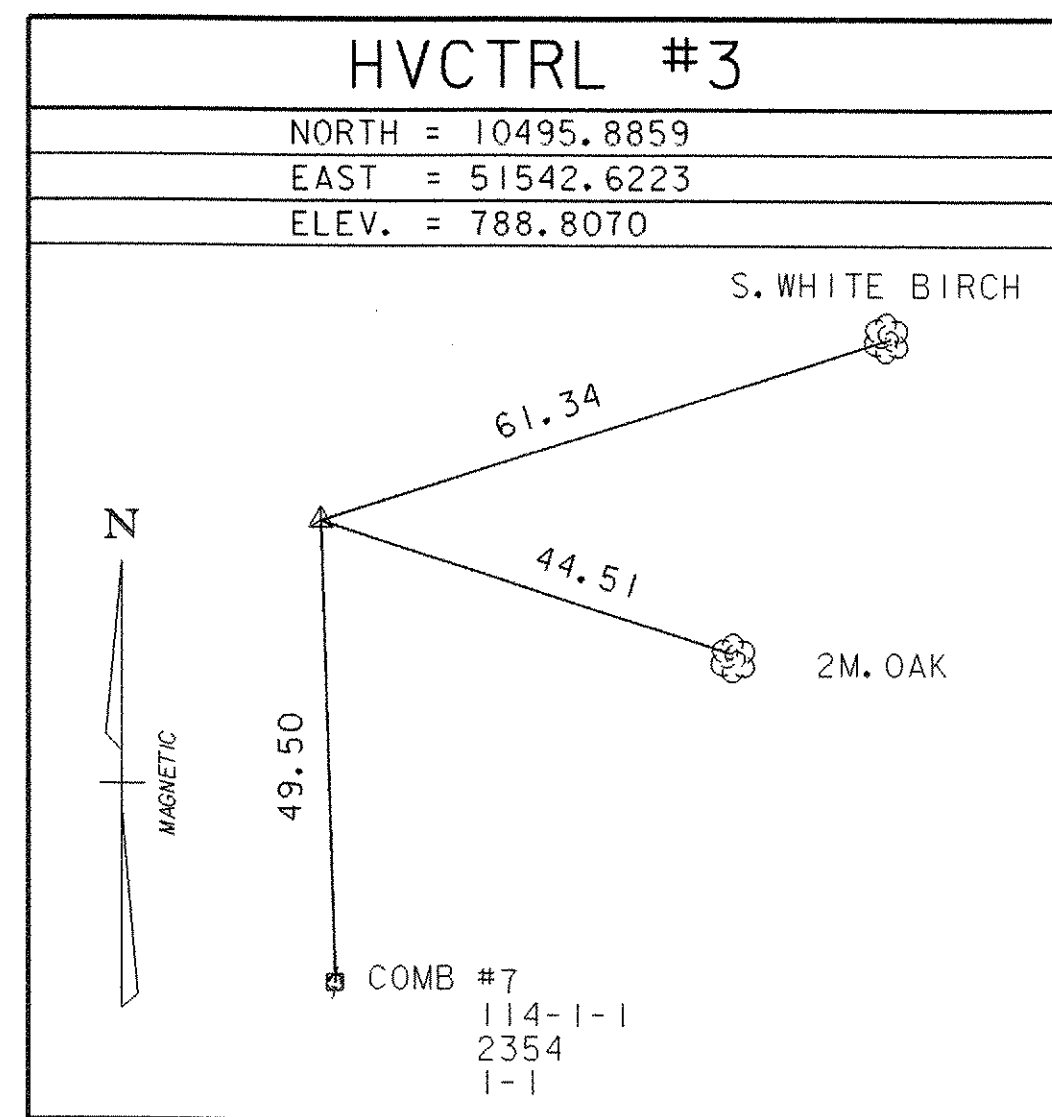


GPS CONTROL POINTS

TRAVERSE TIES



\* MAIN TRAVERSE COMPLETED: NOV. 4, 2004 BY R. GILMAN PC & J. HULETT

ALIGNMENT TIES

VT II STA. 10+00.00

N = 10627.2487  
 E = 51640.3718

VT II STA. 20+00.00

N = 11306.5509  
 E = 52374.2304

CHANNEL LINE STA. 50+00.00

N = 10906.4248  
 E = 52086.9426

CHANNEL LINE STA. 52+00.00

N = 11027.3748  
 E = 51927.6596

TIE SHEET

<b>DATUM</b>	
VERTICAL	NAVD88
HORIZONTAL	ASSUMED
ADJUSTMENT	N/A

PROJECT NAME:	SPRINGFIELD
PROJECT NUMBER:	ST CULV(5)
FILE NAME: x04cl78+1.dgn	PLOT DATE: 21-MAY-2007
PROJECT LEADER: R. R. WHITCOMB	DRAWN BY: J. HULETT
DESIGNED BY: J. PERRIGO	CHECKED BY: P. HODGE
	SHEET 3 OF 52