

**REMOVAL AND DISPOSAL OF EXISTING GUARDRAIL**

STA 71+27.00 LT - 72+75.00 LT  
 STA 70+25.00 RT - 71+52.00 RT

**HEAVY DUTY STEEL BEAM GUARDRAIL**

STA 71+21.00 LT - 71+32.45 LT  
 STA 71+57.45 LT - 72+25.00 LT  
 STA 70+25.00 RT - 71+03.04 RT  
 STA 71+28.04 RT - 71+56.00 RT

**HEAVY DUTY STEEL BEAM GUARDRAIL (MOD. PEDESTAL MOUNTED)**

STA 71+32.45 LT - 71+57.45 LT  
 STA 71+03.04 RT - 71+28.04 RT

**ANCHOR FOR STEEL BEAM GUARDRAIL**

STA 71+27.00 LT  
 STA 70+32.00 RT  
 STA 71+34.00 RT

**CONSTRUCT DRIVE**

STA 71+67.00 RT (5' PAVED APRON)

**REMOVE TRAFFIC SIGNS**

STA 70+94.96 RT  
 STA 71+74.10 LT

**NEW TRAFFIC SIGNS, TYPE A**

STA 70+90.00 RT  
 STA 71+75.00 LT

**BREAKAWAY CABLE TERMINAL**

**BEGIN R.O.W. PROJECT**  
 STA. 69+74.5 24.75' LT.  
 CONSTRUCT 5' APRON  
 STA 69+77.94 LT - 71+21.89 LT

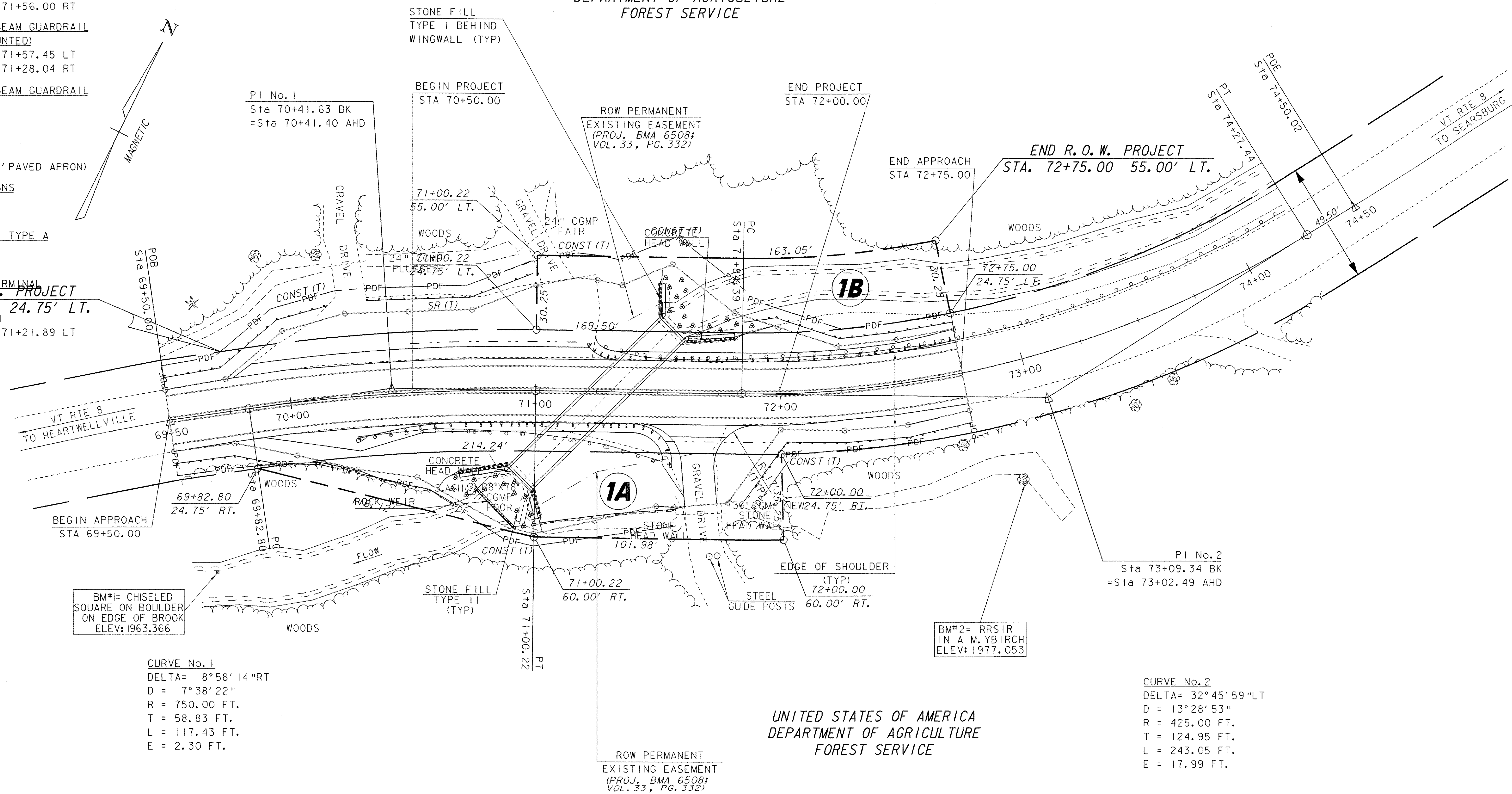
**DURABLE 4" WHITE LINE**

STA 69+50.00 LT - 72+75.00 LT  
 STA 69+50.00 RT - 72+75.00 LT

**DURABLE 4" YELLOW LINE (DOUBLE)**

STA 69+50.00 - 72+75.00

UNITED STATES OF AMERICA  
 DEPARTMENT OF AGRICULTURE  
 FOREST SERVICE



BM#1= CHISELED SQUARE ON BOULDER ON EDGE OF BROOK ELEV: 1963.366

**CURVE No. 1**  
 DELTA= 8° 58' 14" RT  
 D = 7° 38' 22"  
 R = 750.00 FT.  
 T = 58.83 FT.  
 L = 117.43 FT.  
 E = 2.30 FT.

**CURVE No. 2**  
 DELTA= 32° 45' 59" LT  
 D = 13° 28' 53"  
 R = 425.00 FT.  
 T = 124.95 FT.  
 L = 243.05 FT.  
 E = 17.99 FT.

**DATUM**  
 VERTICAL NAVD 88  
 HORIZONTAL ASSUMED

**LAYOUT**  
 SCALE 1" = 20'-0"  
 20 0 20

PROJECT: <b>READSBORO</b>	PROJECT NO.: <b>ST CULV (4)</b>
DESIGN FILE NAME: 04c176/structures/s04c176bdr.dgn	PLOT DATE: 18-JUL-2006
IPARM FILE NAME: s04c176lay.i	SURVEY DATE: 11/2004
SURVEYED BY: L.G. ORVIS	DRAWN BY: M. FESSEL
SQUAD LEADER: C.P. WILLIAMS	ROW SHEET 9 OF 9
	SHEET 21 OF 39