

REMOVAL AND DISPOSAL OF EXISTING GUARDRAIL

STA 71+27.00 LT - 72+75.00 LT
 STA 70+25.00 RT - 71+52.00 RT

HEAVY DUTY STEEL BEAM GUARDRAIL

(MOD. PEDESTAL MOUNTED)
 STA 71+21.00 LT - 71+32.45 LT
 STA 71+57.45 LT - 72+25.00 LT
 STA 70+25.00 RT - 71+03.04 RT
 STA 71+28.04 RT - 71+56.00 RT

ANCHOR FOR STEEL BEAM GUARDRAIL

STA 71+27.00 LT
 STA 70+32.00 RT
 STA 71+34.00 RT

CONSTRUCT DRIVE

STA 71+67.00 RT (5' PAVED APRON)

REMOVE TRAFFIC SIGNS

STA 70+94.96 RT
 STA 71+74.10 LT

NEW TRAFFIC SIGNS, TYPE A

STA 70+90.00 RT
 STA 71+75.00 LT

BREAKAWAY CABLE TERMINAL

STA 70+25.00 RT

CONSTRUCT 5' APRON

STA 69+77.94 LT - 71+21.89 LT

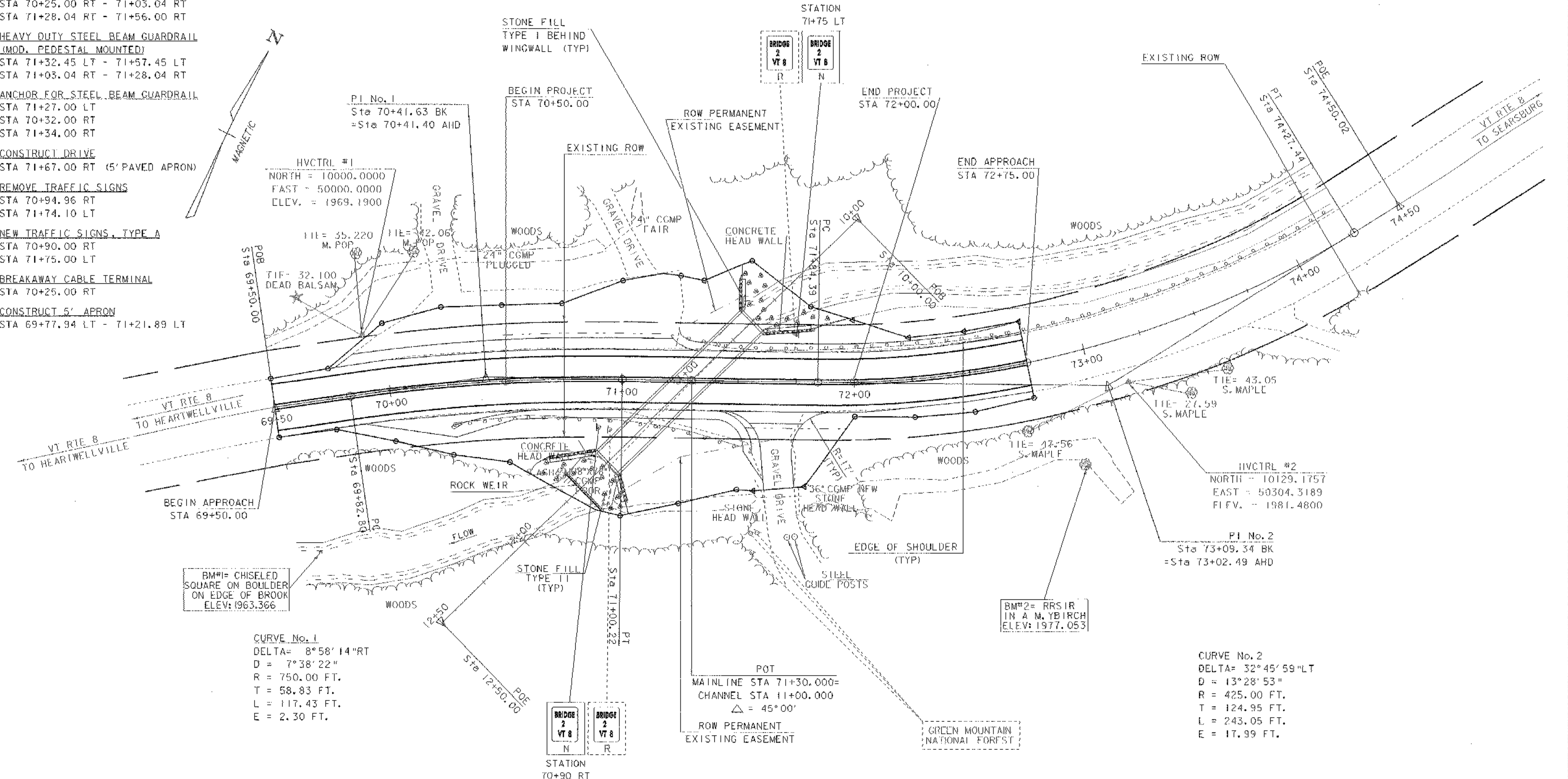
DURABLE 4" WHITE LINE

STA 69+50.00 LT - 72+75.00 LT
 STA 69+50.00 RT - 72+75.00 RT

DURABLE 4" YELLOW LINE (DOUBLE)

STA 69+50.00 - 72+75.00

DID NOT USE DURABLES



DATUM	NAVD 88
VERTICAL	ASSUMED
HORIZONTAL	ASSUMED

LEGEND	
R	REMOVE
N	NEW

LAYOUT
 SCALE 1" = 20'-0"
 20 0 20

PROJECT: READSBORO	PROJECT NO. 1 ST CULV (4)
DESIGN FILE NAME: 04c176/structures/s04c176bdr.dgn	PLOT DATE: 18-JUL-2006
IPARM FILE NAME: s04c176lay.1	SURVEY DATE: 11/2004
SURVEYED BY: L.G. ORVIS	DRAWN BY: M. FESSEL
SQUAD LEADER: C.P. WILLIAMS	SHEET: 8 OF 39
LAYOUT	