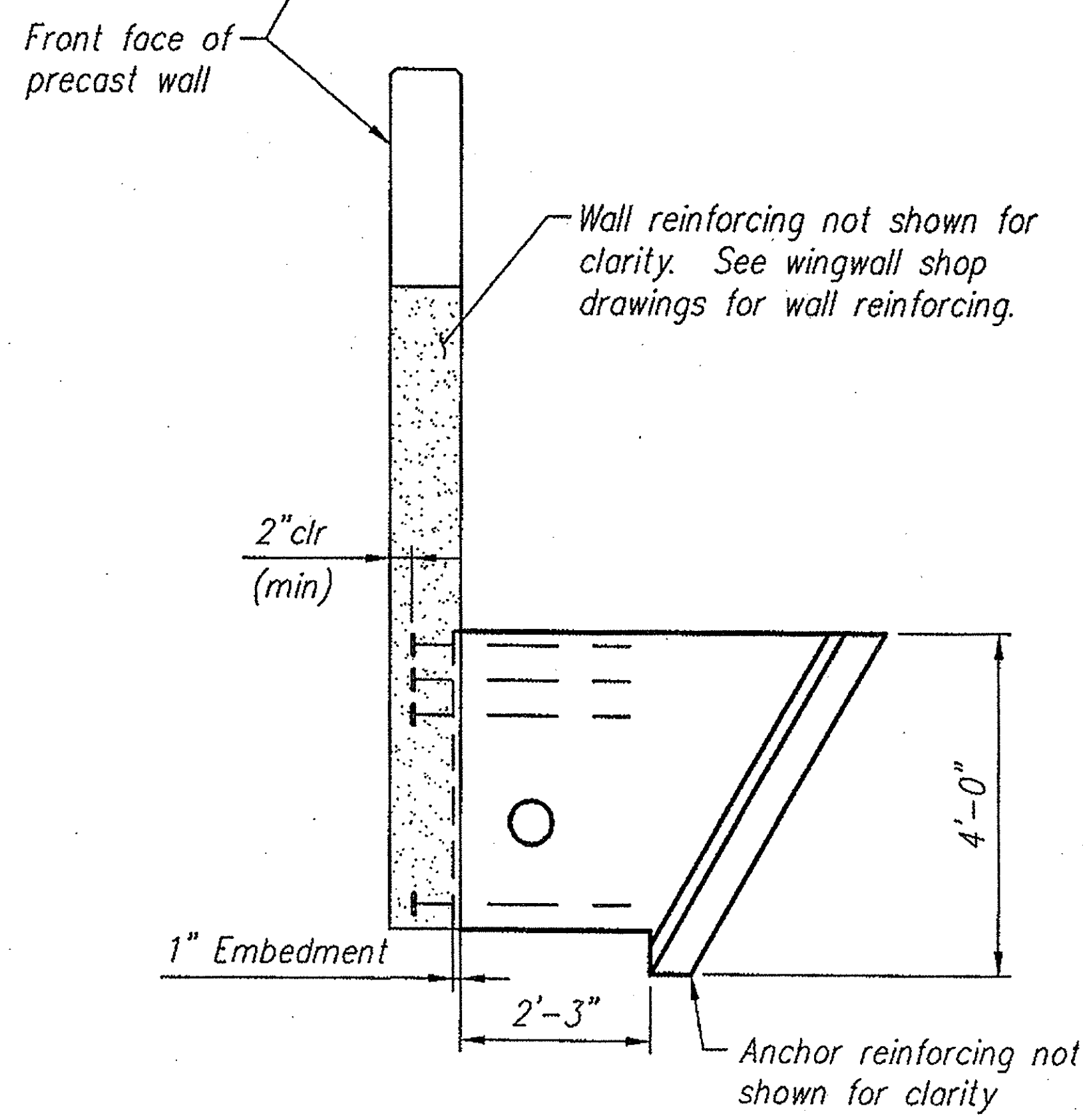


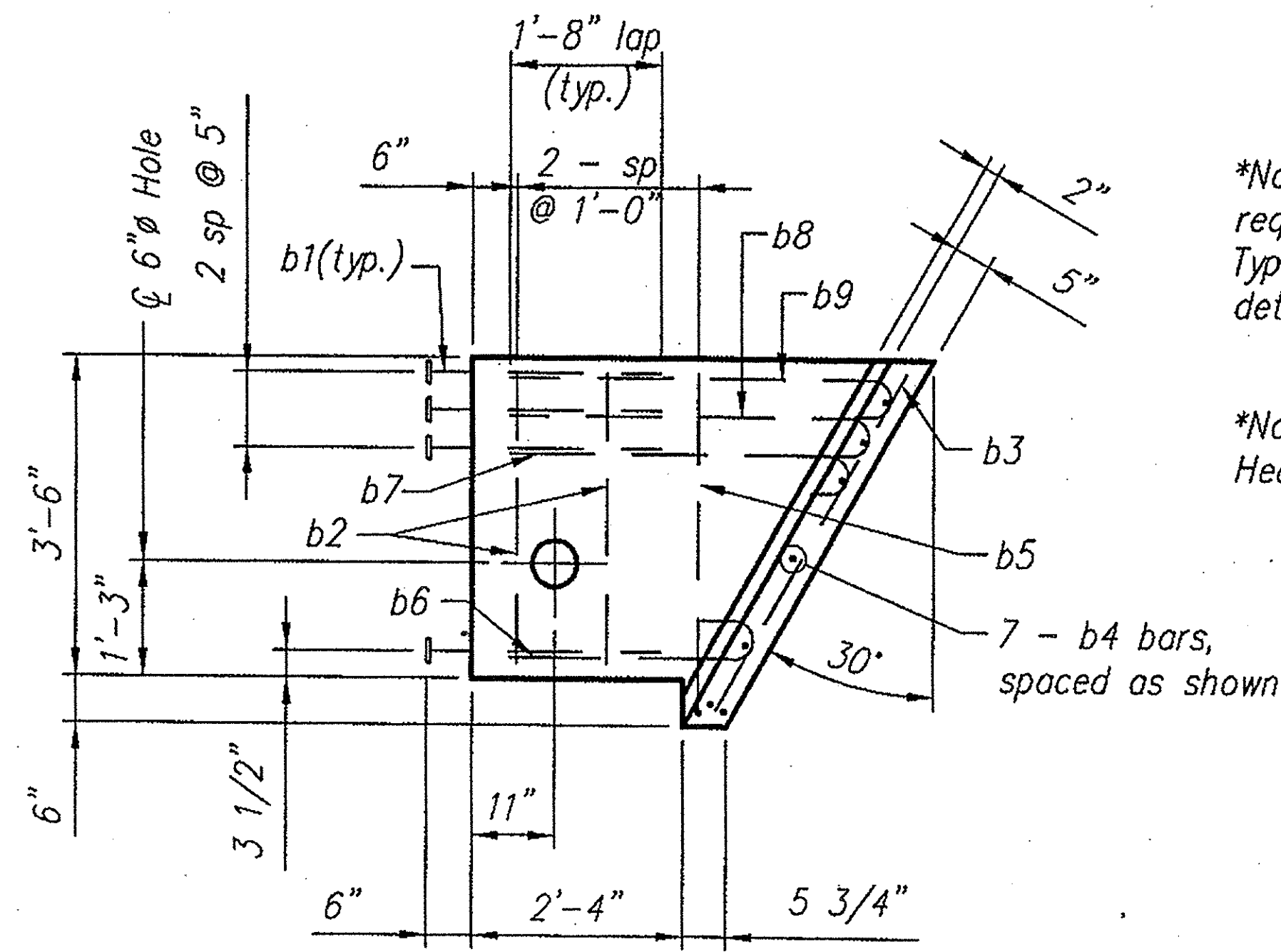
PLAN



SECTION

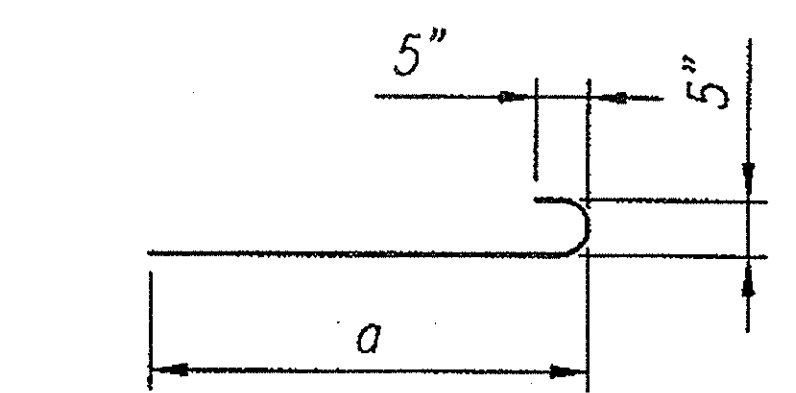
BAR LIST						
MARK	QTY.	SIZE	a	TYPE	LENGTH	FINISH
b1	4	#6	2'-7"	3	—	Epoxy*
b2	2	#5	—	Str.	3'-2"	Black
b3	4	#5	—	Str.	4'-3"	Black
b4	7	#5	—	Str.	2'-2"	Black
b5	2	#5	3'-8"	2	—	Black
b6	1	#5	2'-9"	1	—	Black
b7	1	#5	3'-9"	1	—	Black
b8	1	#5	4'-0"	1	—	Black
b9	1	#5	4'-3"	1	—	Black

Note: "Str." denotes straight bar.
Standard Clearance = 2"

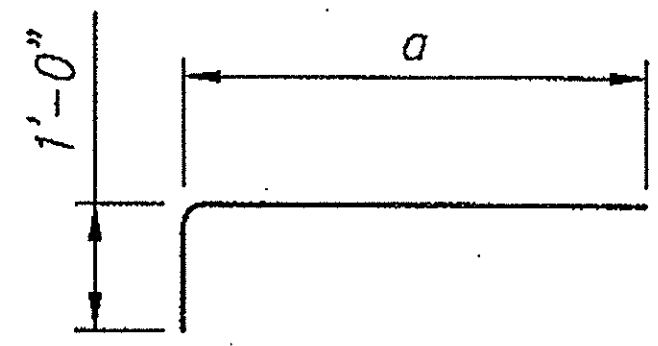


PRECAST ANCHOR
TYPE C

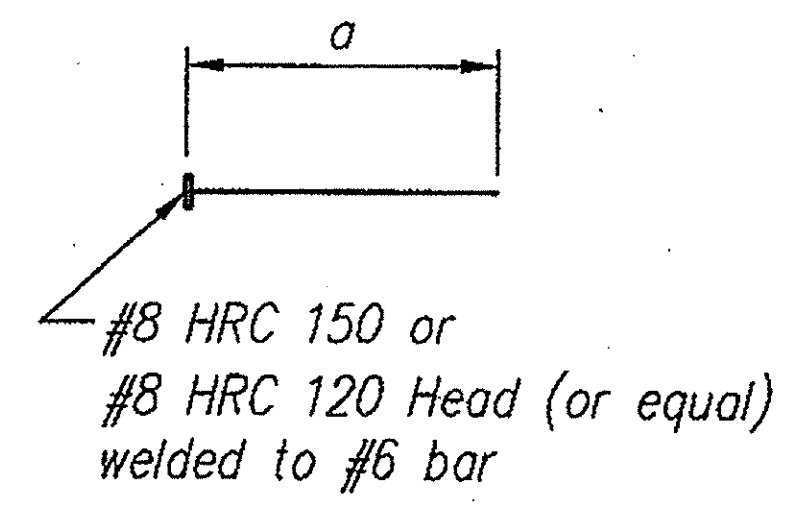
APPROVAL ONLY:
NOT FOR CONSTRUCTION



Type 1



Type 2



Type 3
(Epoxy Coated*)

*Note: Epoxy coating is not required on headed ends of Type 3 bars, but will not be detrimental if provided.

*Note: HRC heads provided by Headed Reinforcement Corp.

CONISPAN
BRIDGE SYSTEMS
3100 Research Blvd.
P.O. Box 20266
Dayton, Ohio 45420-0266
(800) 526-3889

Offices
Dayton, OH (937) 254-2233
fax (937) 254-8365
Charlotte NC (704) 548-8420
Sacramento, CA (916) 787-8701
Albany, NY (518) 371-2871

CON/SPAN® is a patented system and the furnishing of this drawing does not constitute an express or implied license.

Revisions:	Date				
	No.	1	2	3	4

Sheet Title:
WINGWALL ANCHOR C
SHOP DRAWING

VERMONT
MONTPELIER
BUELS GORE

Des. By: KJG	Job No. 14688
Drawn By: WLC	Sheet No.
Chk'd By: MRW	S21
Date: 8/25/06	058