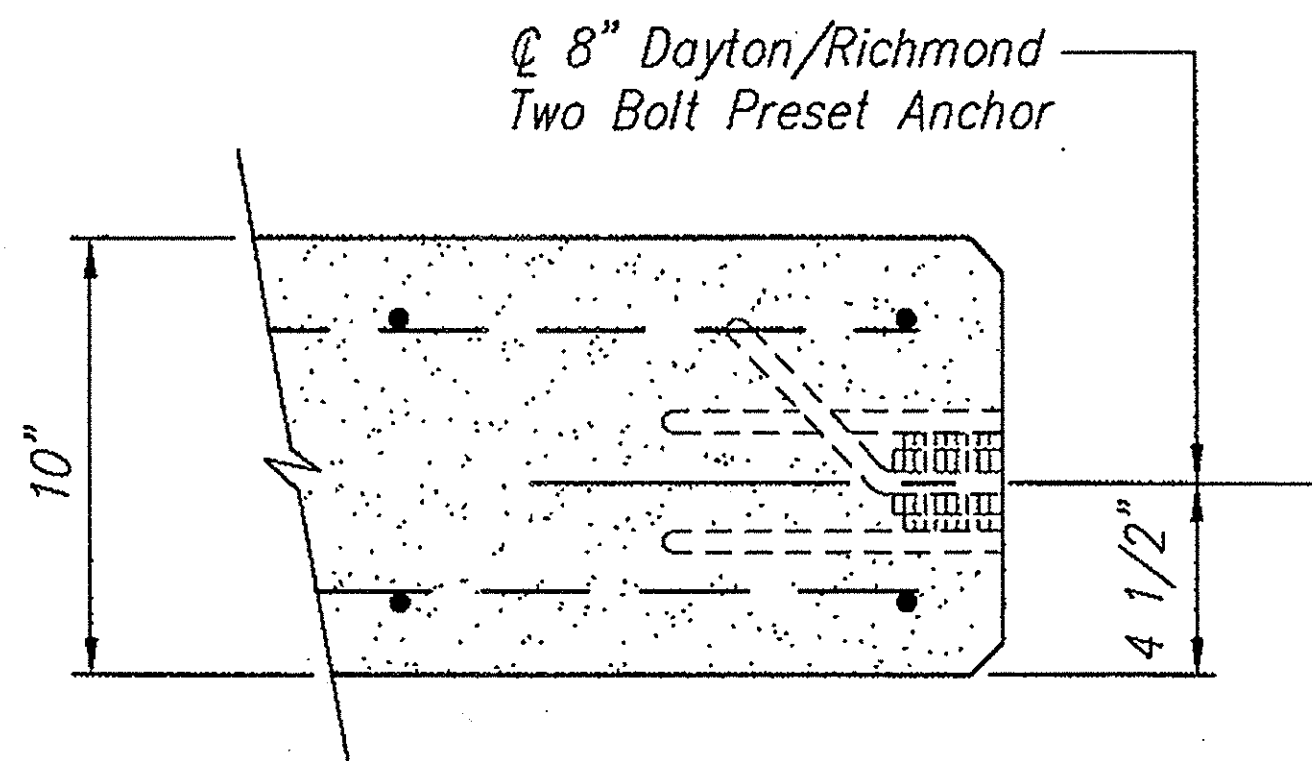


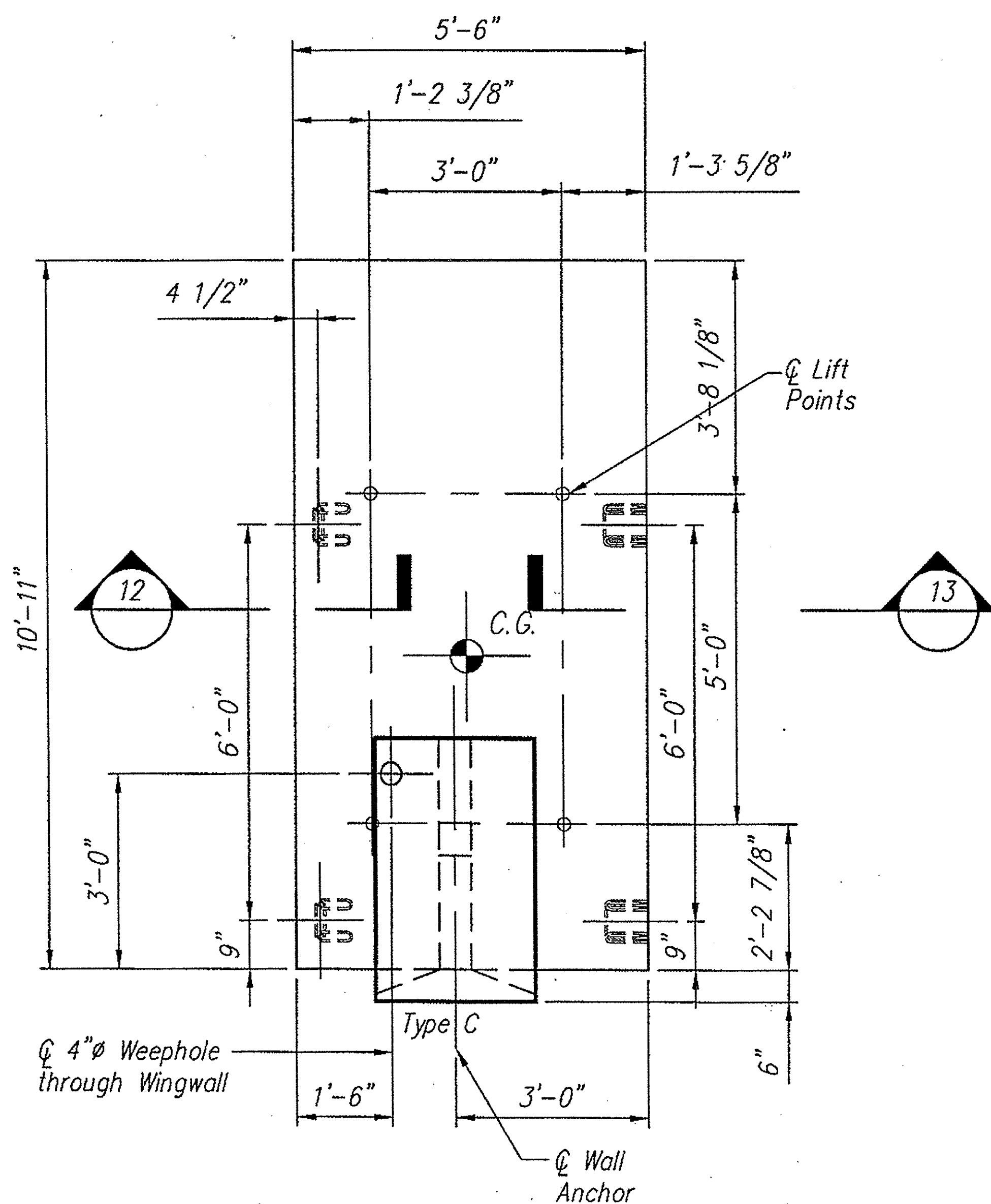
SECTION 12

FOR LIFTING USE 8UA671  
UTILITY ANCHORS

**APPROVAL ONLY:**  
NOT FOR CONSTRUCTION



SECTION 13



ELEVATION

- Notes:
- All edges of Precast to have a 3/4" chamfer
  - See Sheet S17 for Reinforcing Detail
  - Elevation is looking at back face of Wingwall
  - Back face denotes anchor side of Wingwall

Total Weight = 4.7 Tons

**CONSPAN**  
BRIDGE SYSTEMS  
3100 Research Blvd. © 2006  
P.O. Box 20266  
Dayton, Ohio 45420-0266  
(800) 526-3999

Offices:  
Dayton, OH (937) 254-2233  
fax (937) 254-8365  
Charlotte NC (704) 548-8420  
Sacramento, CA (916) 787-8701  
Albany, NY (518) 371-2871

CON/SPAN® is a patented system and the furnishing of this drawing does not constitute an express or implied license.

Revisions:	No.	Date
	1	
2		
3		
4		

Sheet Title:  
WINGWALL WW3b  
SHOP DRAWING

VERMONT  
MONTPELIER  
**BUELS GORE**

Des. By: KJG	Job No. 14688
Drawn By: WLC	Sheet No.
Chk'd By: MRW	<b>S16</b>
Date: 8/25/06	053