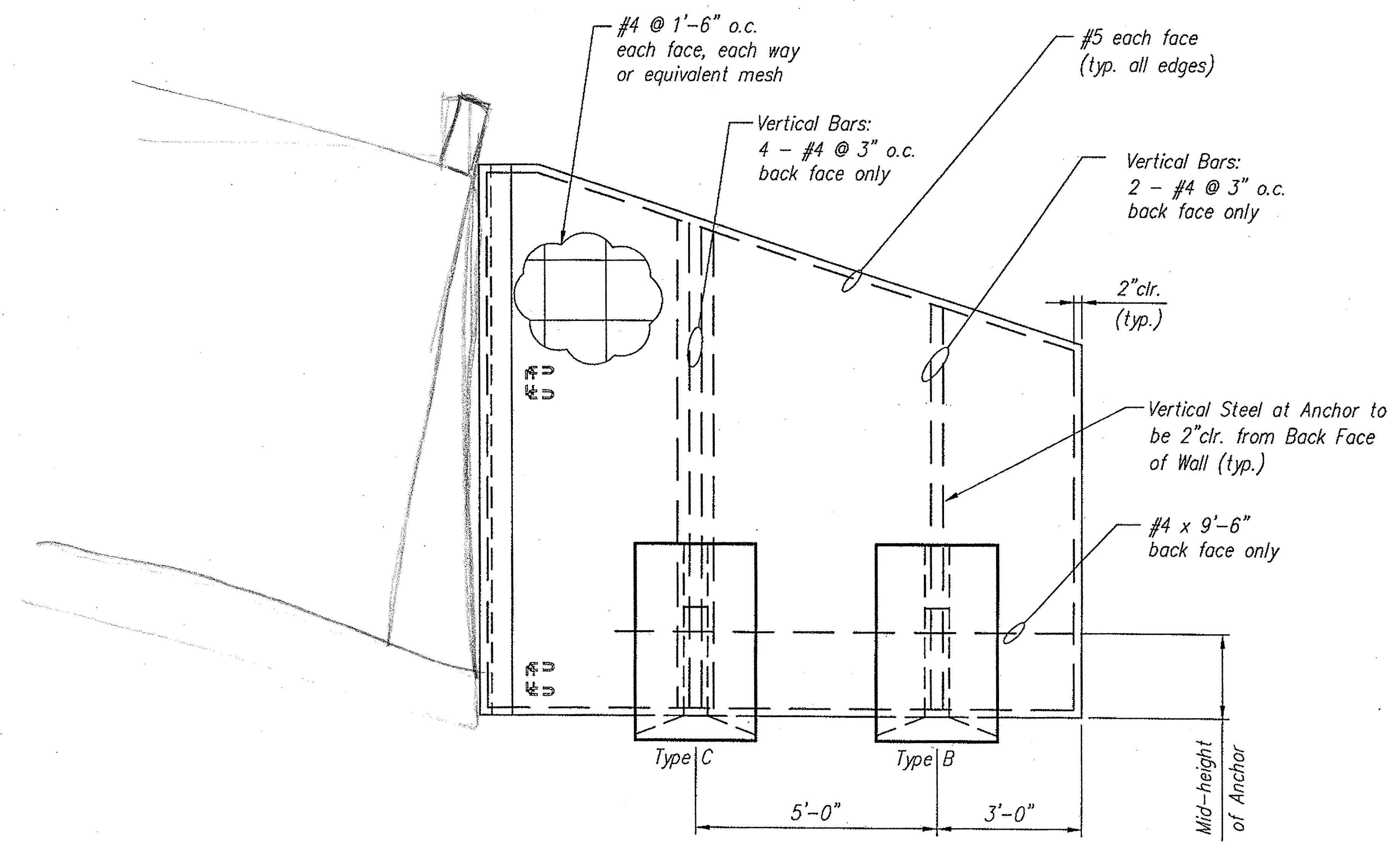


**APPROVAL ONLY:**  
NOT FOR CONSTRUCTION

**CONSPAN®**  
BRIDGE SYSTEMS  
3100 Research Blvd.  
P.O. Box 20266  
Dayton, Ohio 45420-0266  
(603) 526-3999

**Offices**  
Dayton, OH (937) 254-2233  
fax (937) 254-8365  
Charlotte NC (704) 548-8420  
Sacramento, CA (916) 787-8701  
Albany, NY (518) 371-2871

CONSPAN® is a patented system and the furnishing of this drawing does not constitute an express or implied license.



Revisions:	Date				
	No.	1	2	3	4

Sheet Title:  
WINGWALL REINFORCING - WW2  
SHOP DRAWING

VERMONT  
MONPELIER  
**BUELS GORE**

Des. By: KJG	Job No. 14688
Drawn By: WLC	Sheet No.
Chk'd By: MRW	<b>S13</b>
Date: 8/25/06	050

Wingwall		
Concrete	Reinf. Steel	WWF
28-day 4000 psi	60,000 psi uncoated	65,000 psi uncoated

Wherever the reinforcing is cut for the placement of lift holes or other blockouts, reinforcing bars or wires of equivalent cross-sectional area shall be placed symmetrically around the hole. At least one bar must be on each side of the hole, and the development length of the bar must be achieved on either side of the cut.

**REINFORCING DETAIL**  
(For Anchor Reinforcing See Sheet S20 & S21)

**Notes:**  
- All edges of Precast to have a 3/4" chamfer  
- Elevation is looking at back face of Wingwall  
- Back face denotes anchor side of Wingwall