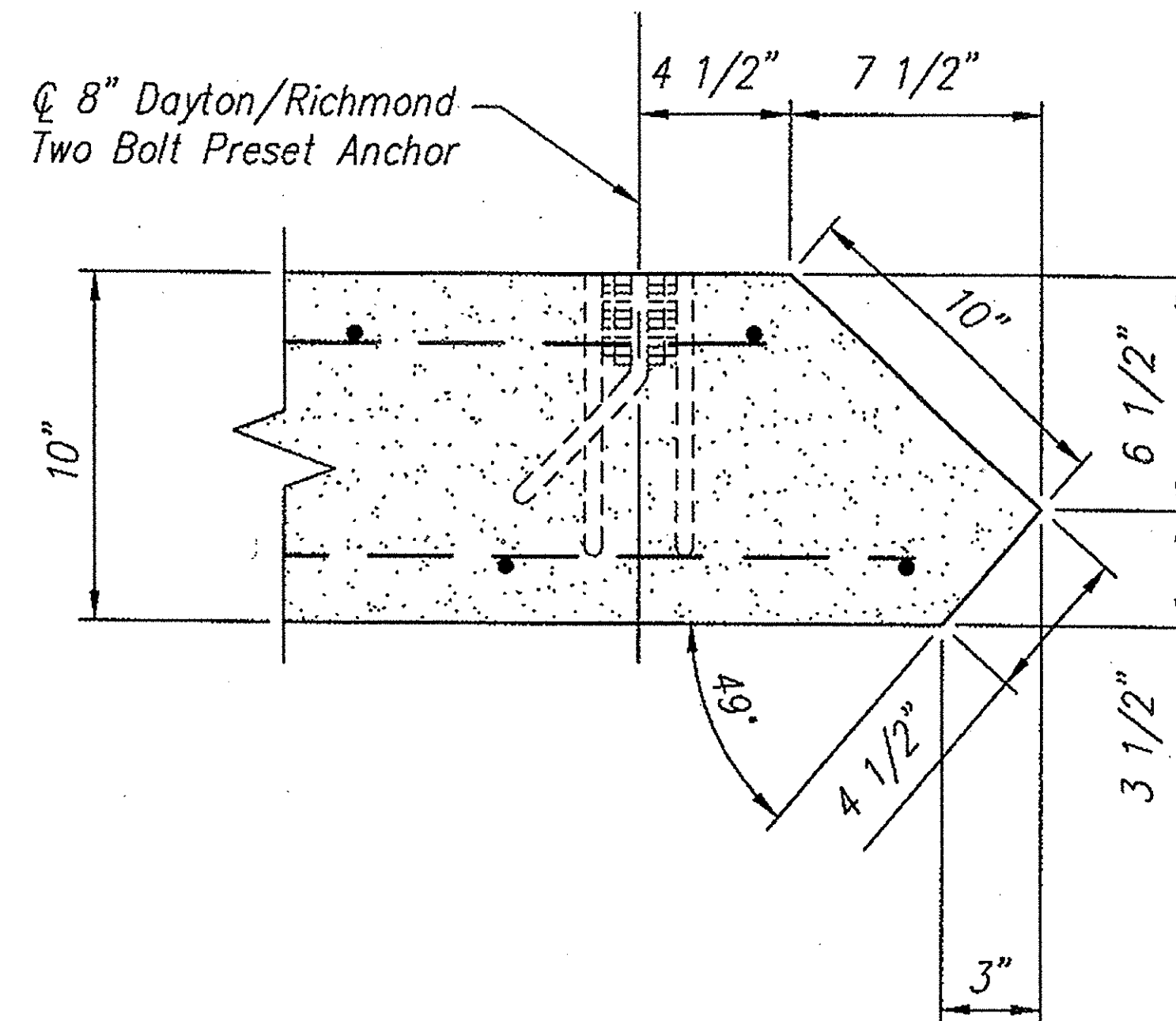
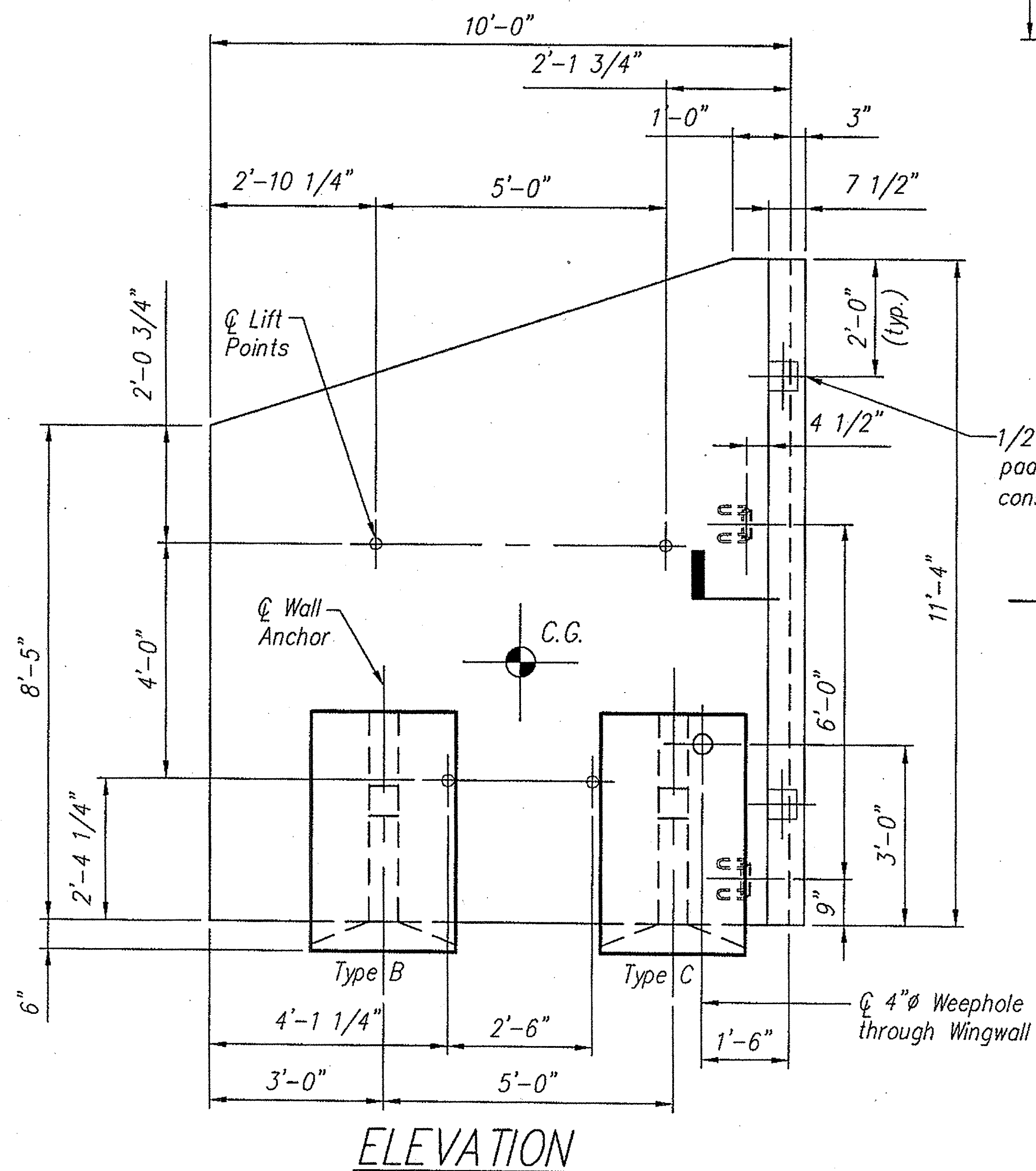


FOR LIFTING USE 8UA671
UTILITY ANCHORS

APPROVAL ONLY:
NOT FOR CONSTRUCTION



Notes:

- All edges of Precast to have a 3/4" chamfer
- See Sheet S11 for Reinforcing Detail
- Elevation is looking at back face of Wingwall
- Back face denotes anchor side of Wingwall
- Wingwall will not hang level. Adjust cable lengths as required

Total Weight = 7.9 Tons

CONSPAN
BRIDGE SYSTEMS
3100 Research Blvd.
P.O. Box 20269
Dayton, Ohio 45420-0266
(800) 526-3999

Offices
Dayton, OH (937) 254-2233
fax (937) 254-8365
Charlotte NC (704) 548-8420
Sacramento, CA (916) 787-8701
Albany, NY (518) 371-2871

CONSPAN® is a patented system and the furnishing of this drawing does not constitute an express or implied license.

Revisions:	Date	
	No.	
	1	
	2	
	3	
	4	

Sheet Title:
WINGWALL WM1
SHOP DRAWING

VERMONT
MONTPELIER
BUELS GORE

Des. By: KJG	Job No. 14688
Drawn By: WLC	Sheet No.
Chk'd By: MRW	S10
Date: 8/25/06	047