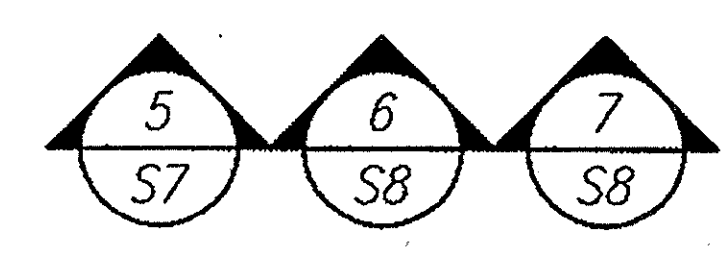
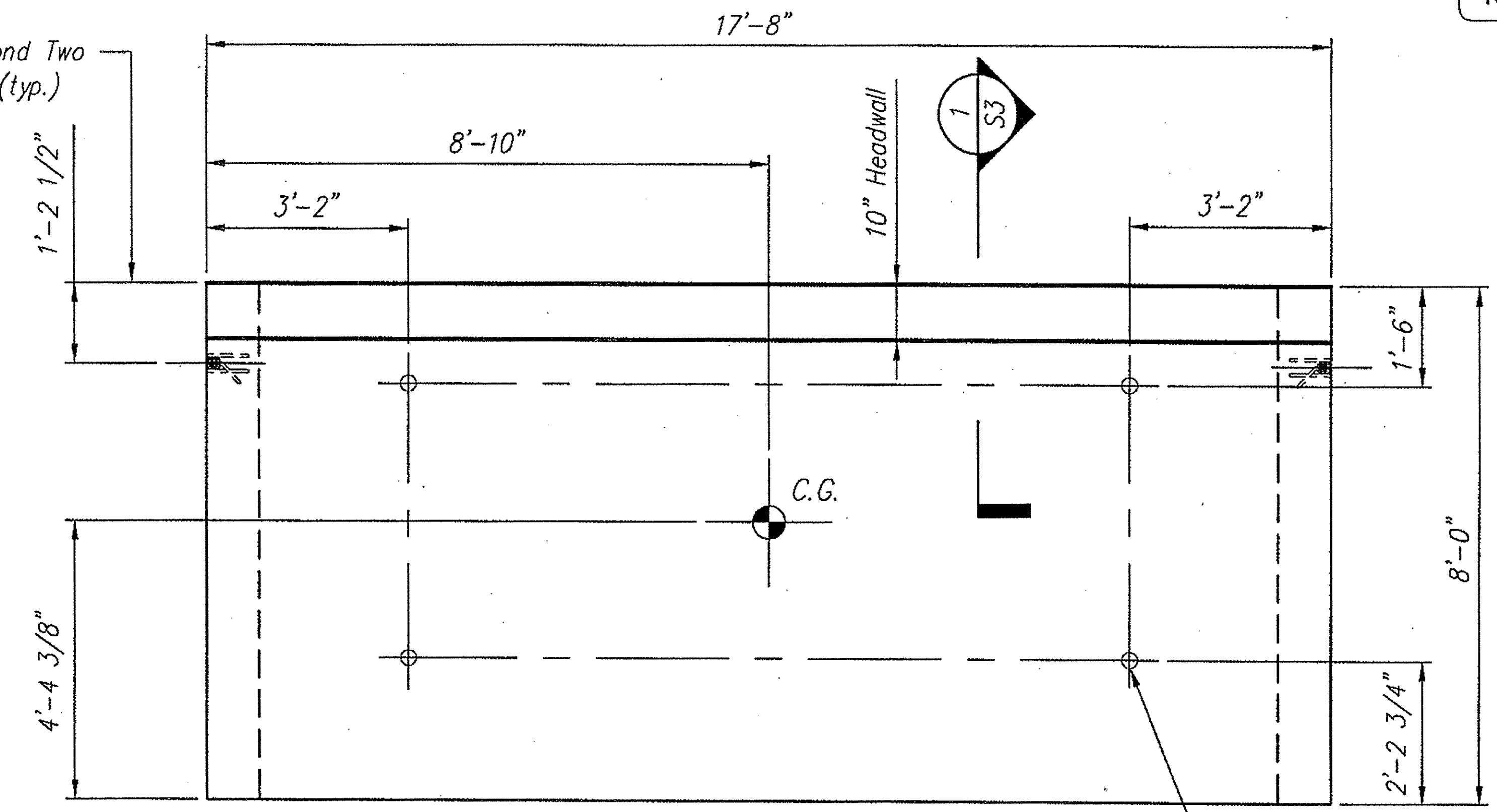


APPROVAL ONLY:
NOT FOR CONSTRUCTION

Ø 8" Dayton/Richmond Two Bolt Preset Anchor (typ.)



PLAN

Lift Hole Insert (typ.)

Notes:
 - All edges of Precast to have a 3/4" chamfer
 - Bridge Unit will not hang level. Adjust cable lengths as required

Unit Weight = 17.6 Tons
 Headwall Weight = 2.0 Tons
 Total Weight = 19.7 Tons

CONSPAN
BRIDGE SYSTEMS
 3100 Research Blvd.
 P.O. Box 20266
 Dayton, Ohio 45420-0266
 (603) 526-3999

Offices
 Dayton, OH (937) 254-2233
 fax (937) 254-8365
 Charlotte NC (704) 548-8420
 Sacramento, CA (916) 787-8701
 Albany, NY (518) 371-2871

CONSPAN® is a patented system and the furnishing of this drawing does not constitute an express or implied license.

Revisions:	
No.	Date
1	
2	
3	
4	

Sheet Title:
 HEADWALL END UNIT - C2
 SHOP DRAWING

VERMONT
 MONTPELIER
BUELS GORE

Des. By: KJG	Job No. 14688
Drawn By: WLC	Sheet No.
Chk'd By: MRW	S6
Date: 8/25/06	043