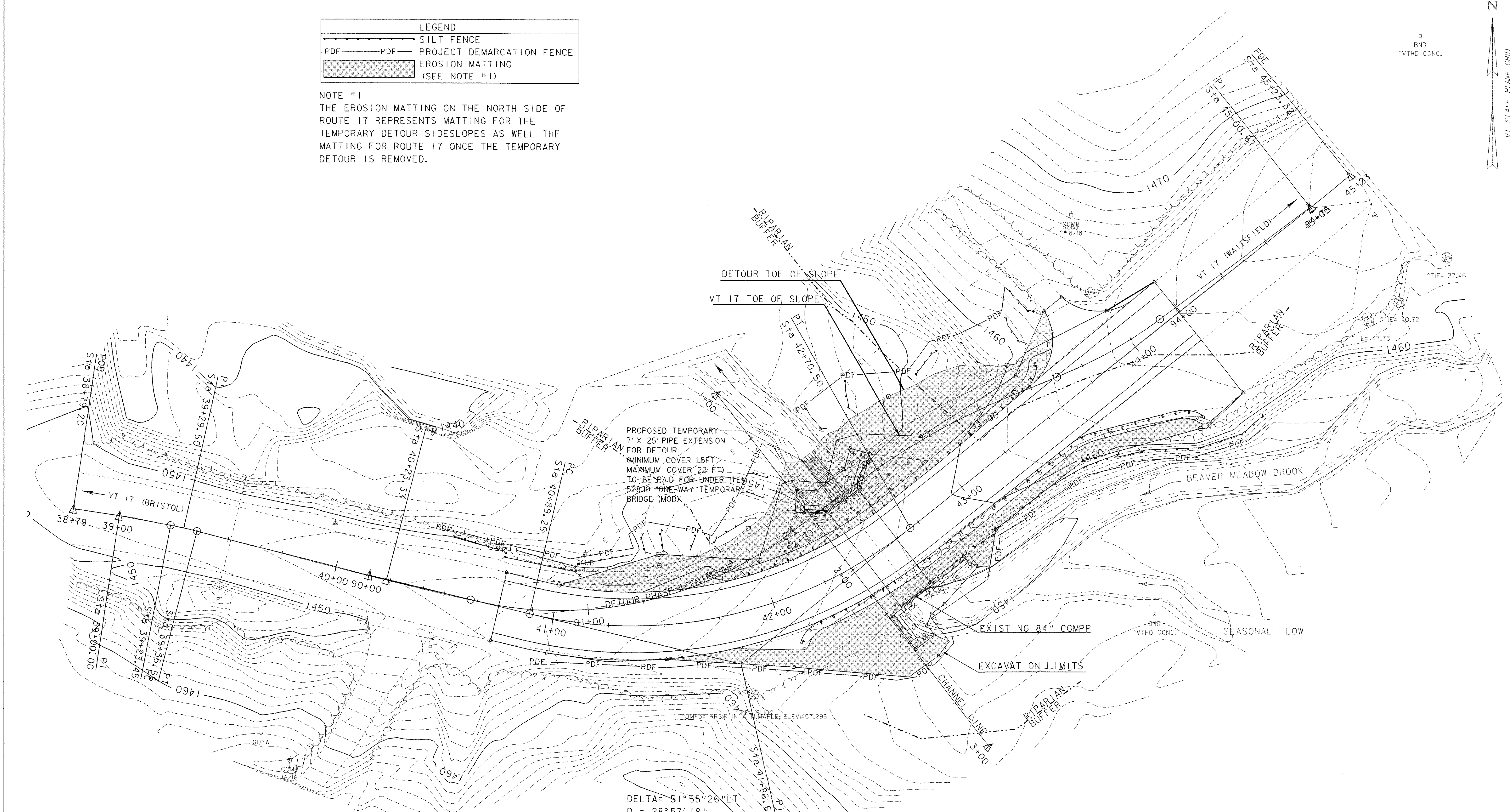
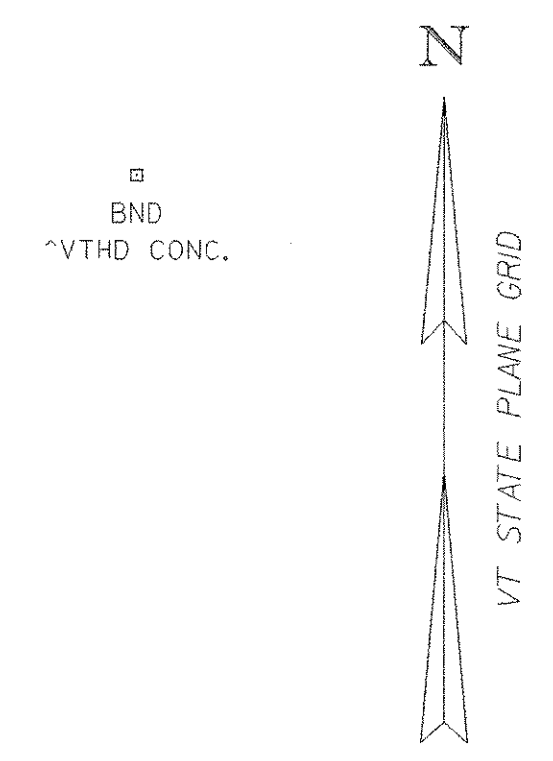


| LEGEND |                                  |
|--------|----------------------------------|
|        | SILT FENCE                       |
|        | PROJECT DEMARCATION FENCE        |
|        | EROSION MATTING<br>(SEE NOTE #1) |

NOTE #1  
 THE EROSION MATTING ON THE NORTH SIDE OF ROUTE 17 REPRESENTS MATTING FOR THE TEMPORARY DETOUR SIDESLOPES AS WELL THE MATTING FOR ROUTE 17 ONCE THE TEMPORARY DETOUR IS REMOVED.

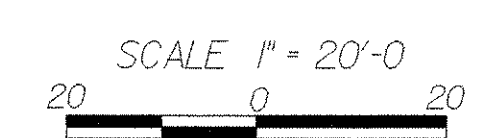


PROPOSED TEMPORARY  
 7' X 25' PIPE EXTENSION  
 FOR DETOUR  
 MINIMUM COVER 1.5 FT.  
 MAXIMUM COVER 22 FT.  
 TO BE PAID FOR UNDER ITEM  
 52810 - ONE-WAY TEMPORARY  
 BRIDGE (MODX)

DELTA =  $51^{\circ}55'26''$  LT  
 D = 28' 57' 18"  
 R = 200.00 FT.  
 T = 97.38 FT.  
 L = 181.25 FT.  
 E = 22.45 FT.

| DATUM      |         |
|------------|---------|
| VERTICAL   | NAVD 27 |
| HORIZONTAL | ASSUMED |

**EROSION PREVENTION AND SEDIMENT CONTROL PLAN**



|                 |                |                 |                                 |             |                 |
|-----------------|----------------|-----------------|---------------------------------|-------------|-----------------|
| PROJECT NAME:   | BUELS GORE     | FILE NAME:      | 04cl38/structures/s04cl38ec.dgn | PLOT DATE:  | 05-APR-2006     |
| PROJECT NUMBER: | STP ST CULV(I) | PROJECT LEADER: | M EVANS-MONGEON                 | DRAWN BY:   | W FARLEY        |
|                 |                | DESIGNED BY:    | W FARLEY                        | CHECKED BY: | M EVANS-MONGEON |
|                 |                | IPARM:          | s04cl38ec2.1                    | SHEET       | 14 OF 30        |