

STEEL BEAM GUARD RAIL (GALVANIZED)  
 STA 41+86.54LT - 43+48.97LT  
 STA 42+16.41RT - 43+96.01RT  
 NOTE: STA 43+49.80RT - 43+61.93RT WILL HAVE  
 ONE PREFABRICATED 12'-6" SECTION OF  
 RAIL WITH A 30' RADIUS

MANUFACTURED TERMINAL SECTION (FLARED)  
 STA 41+73.32LT - 41+86.54LT  
 STA 42+05.55RT - 42+16.41RT  
 STA 43+48.97LT - 43+60.83LT  
 STA 43+96.01RT - 44+04.86RT

REMOVAL AND DISPOSAL OF GUARD RAIL  
 STA 41+67.12LT - 43+62.89LT  
 STA 41+97.84RT - 44+06.11RT

CONSTRUCT DRIVE  
 STA 43+83.17LT (21' PAVED)

4" WHITE LINE  
 STA 40+75LT - 44+25LT (SOLID EDGE LINE)  
 STA 40+75RT - 44+25RT (SOLID EDGE LINE)

4" YELLOW LINE  
 STA 40+75C - 44+25C (SOLID DOUBLE LINE)

TRAFFIC SIGNS  
 STA 42+45RT 1 EA  
 STA 43+55LT 2 EA

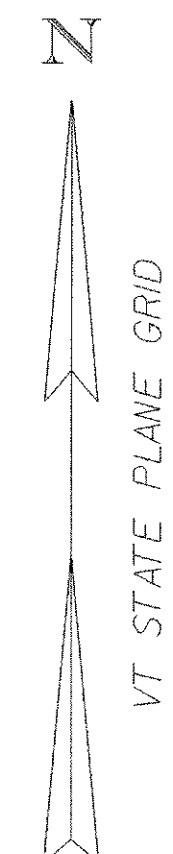
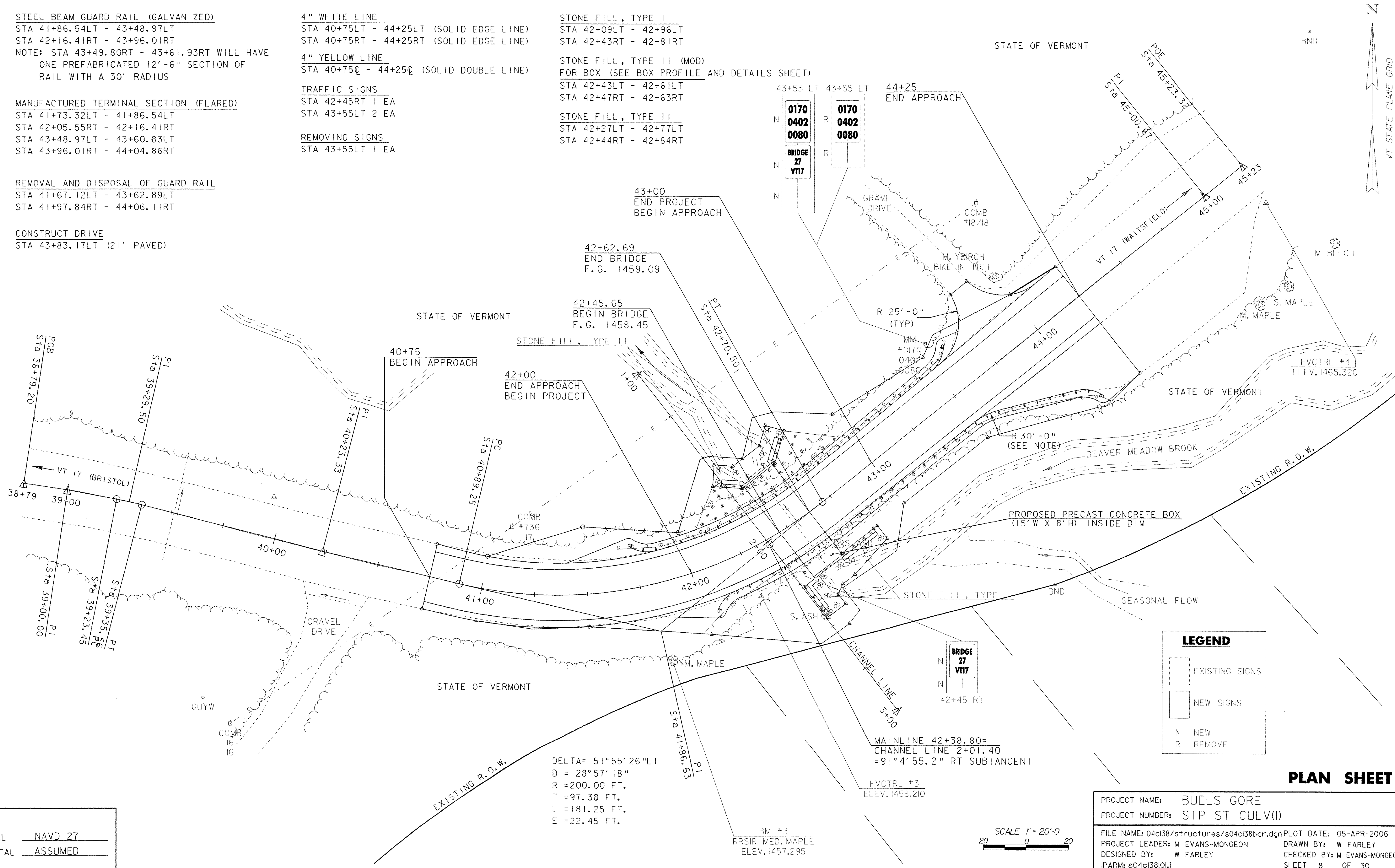
REMOVING SIGNS  
 STA 43+55LT 1 EA

STONE FILL, TYPE I  
 STA 42+09LT - 42+96LT  
 STA 42+43RT - 42+81RT

STONE FILL, TYPE II (MOD)  
 FOR BOX (SEE BOX PROFILE AND DETAILS SHEET)

STA 42+43LT - 42+61LT  
 STA 42+47RT - 42+63RT

STONE FILL, TYPE II  
 STA 42+27LT - 42+77LT  
 STA 42+44RT - 42+84RT



**LEGEND**

	EXISTING SIGNS
	NEW SIGNS
N	NEW
R	REMOVE

**PLAN SHEET**

**DATUM**  
 VERTICAL NAVD 27  
 HORIZONTAL ASSUMED

DELTA= 51°55'26"LT  
 D = 28°57'18"  
 R = 200.00 FT.  
 T = 97.38 FT.  
 L = 181.25 FT.  
 E = 22.45 FT.

MAIN LINE 42+38.80=  
 CHANNEL LINE 2+01.40  
 =91°4'55.2" RT SUBTANGENT

SCALE 1" = 20'-0"  
 20 0 20

PROJECT NAME: **BUELS GORE**  
 PROJECT NUMBER: **STP ST CULV(I)**  
 FILE NAME: 04c138/structures/s04c138bdr.dgn PLOT DATE: 05-APR-2006  
 PROJECT LEADER: M EVANS-MONGEON DRAWN BY: W FARLEY  
 DESIGNED BY: W FARLEY CHECKED BY: M EVANS-MONGEON  
 IPARM: s04c138I01.I SHEET 8 OF 30