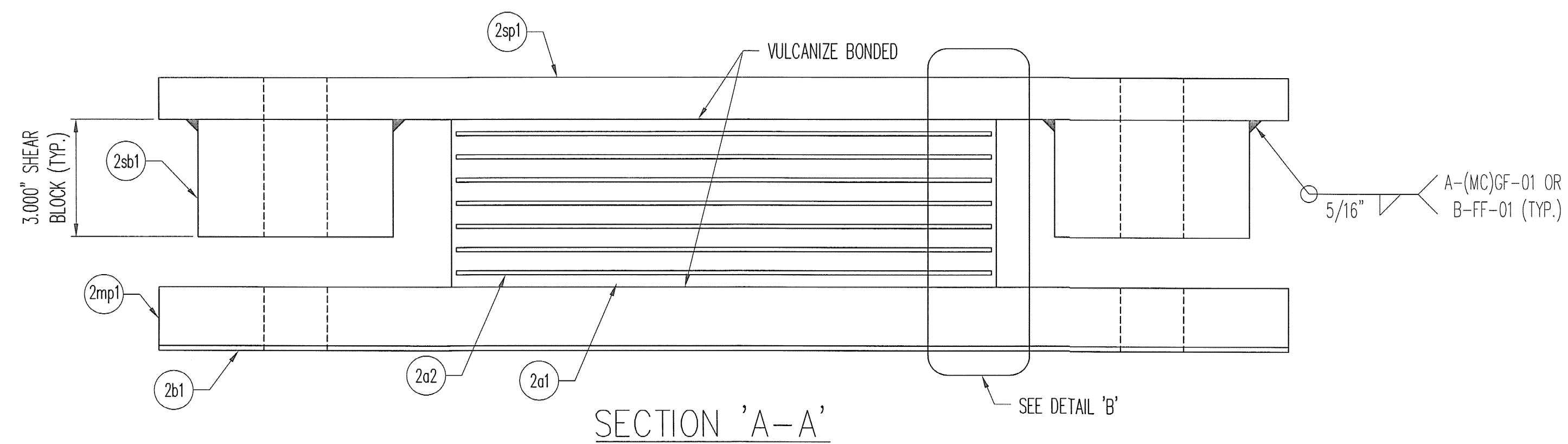
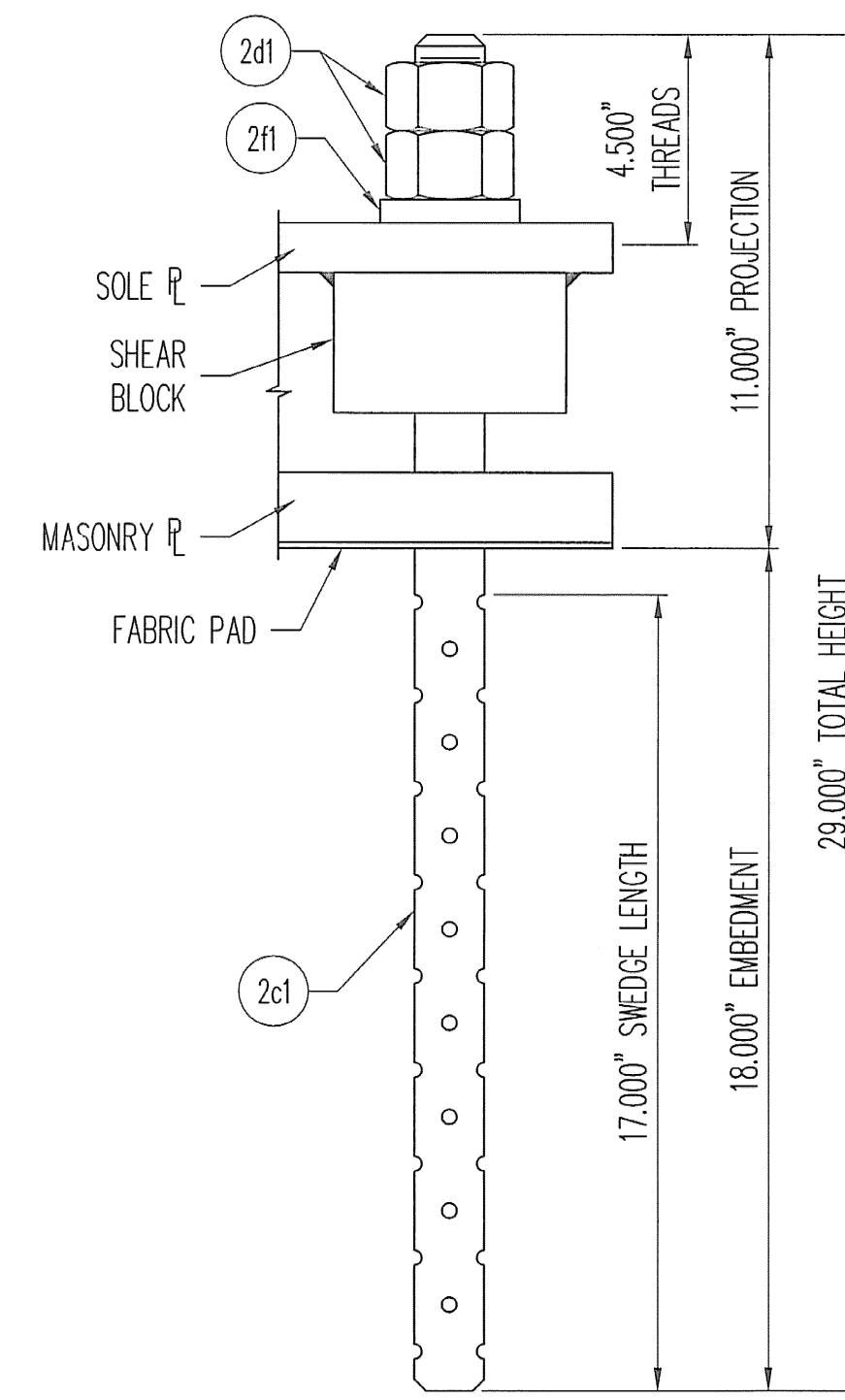


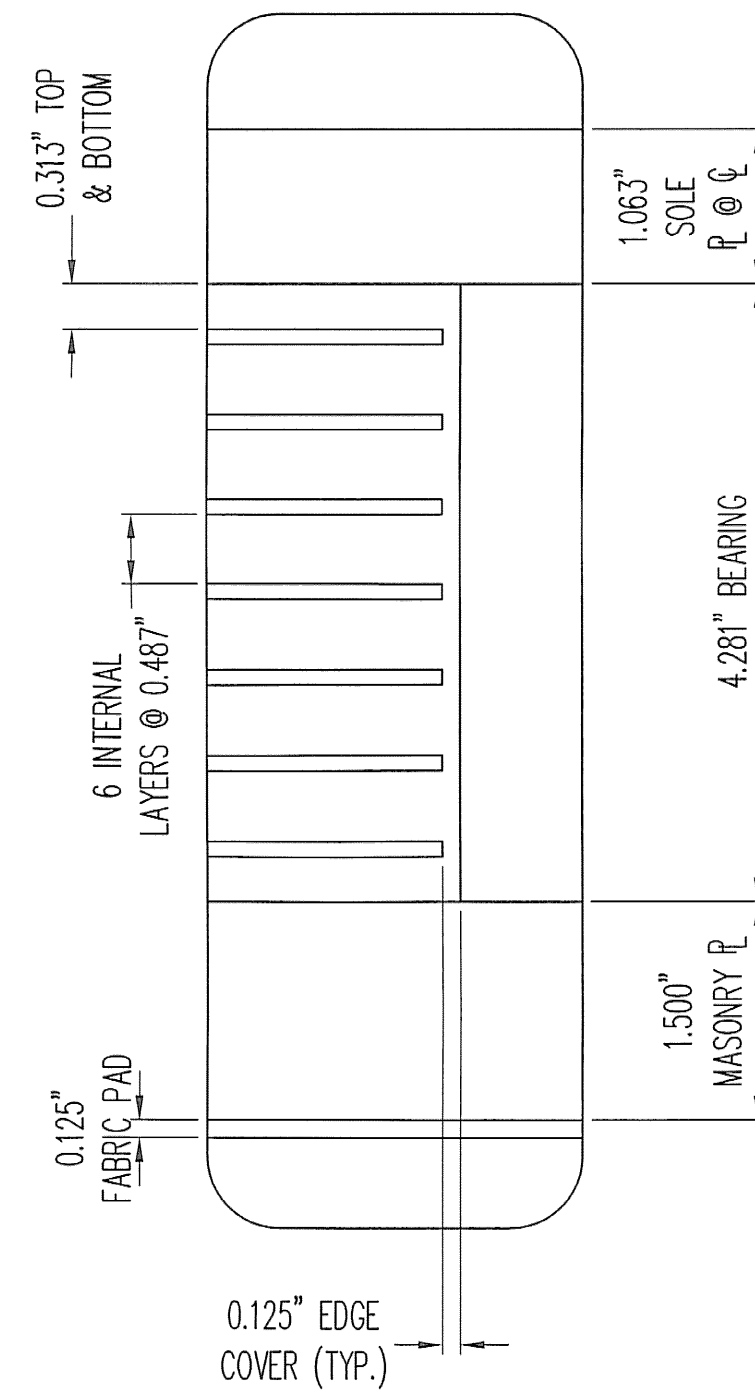
PLAN VIEW  
FIXED ELASTOMERIC BEARING  
(6) REQ'D @ ABUT. 2



SECTION 'A-A'



ANCHOR ROD DETAIL

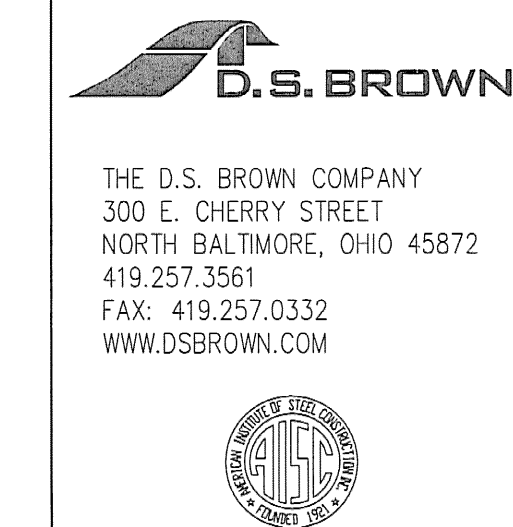


DETAIL 'B'

MK	QTY	DESCRIPTION	MATERIAL	LENGTH	REMARKS	REV
2A	6	ELASTOMERIC BEARING				-
2a1	6	4.281" X 14.000"	NATURAL RUBBER	10.000"	60+/-5 DURO GR.4	-
2a2	42	12 GA. X 13.750"	A1011 GR. 36	9.750"	PLAIN	-
2mp1	6	1.500" X 29.000"	A709 GR 50	14.000"	METALIZE, SEAL	A
2sb1	12	3.000" X 5.000"	A709 GR 50	5.000"	METALIZE, SEAL	A
2sp1	6	1.125" X 29.000"	A709 GR 50	14.000"	METALIZE, SEAL	A
2B	6	FABRIC PAD				-
2b1	6	0.125" X 29.000"	AASHTO (LRFD) 18.10.2	14.000"	HOLES	-
2C	24	SWEDGE ROD				-
2c1	24	Ø1.500" X 29.000" SWEDGED ROD	A449		4.5" THREADS, 17" SWEDGE; A153-HDG	-
2D	48	HEAVY HEX NUT				-
2d1	48	Ø1.500" HEX NUT	A563-DH OR A194-2H		A153-HDG	-
2F	24	ELASTOMERIC WASHER				-
2f1	24	0.500" X 3.000"	NATURAL RUBBER	3.000"	60 MIN. DURO GR.3; 1.563" Ø HOLE @ CENTER	-
					1/27/2009 10:05:23 AM	

SEE SHT. GN1 FOR GENERAL NOTES & COATING LIMITS.

REV.	DESCRIPTION	DATE	DAE	DET.	CKD.
1	REVIEWERS COMMENTS	1/27/09	DA	DAE	
	LOCATION — VT 102 (MAJOR COLLECTOR)			ITEM	QUANTITY
	PROJECT NO. — ER ST 0271 (16)			25217-1104-2	6 OF 6
	BRIDGE — 16				
	P.O. NO. — C2223				
	DESIGNER — VT DOT				
	CUSTOMER — WINTERSET INC.				
	SCALE: N.T.S.	DRAWN BY: DA	CHECKED BY: DAE	DATE: 12/15/08	
	PRODUCT NUMBER: 25217	PRODUCT CODE: 1104	RELEASE: 1	SHEET: 02	



RECEIVED  
OK'D BY SSS  
DATE 1/27/09  
BY mem