

TEMPORARY AND DURABLE 4 in YELLOW LINE  
 STA 477+00 TO 507+00 SOLID LT&RT  
 STA 499+32 DOUBLE SOLID LT  
 (WITH CENTERLINE BREAKS FOR TOWN HIGHWAYS)

TEMPORARY AND DURABLE 4 in WHITE LINE  
 STA 477+00 TO 507+00 SOLID LT&RT  
 (WITH EDGELINE BREAKS FOR TOWN HIGHWAYS)

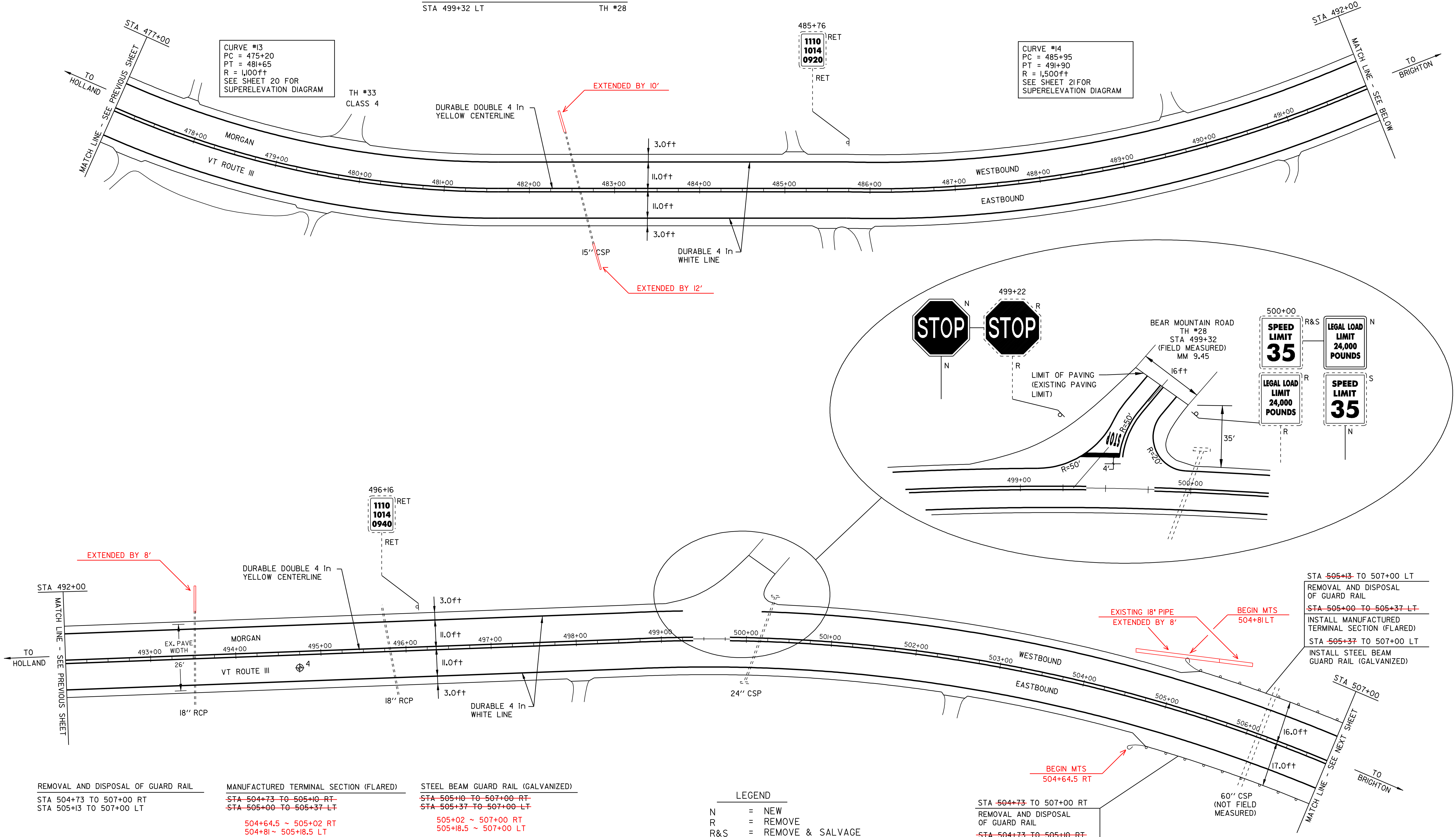
TEMPORARY AND DURABLE LETTER OR SYMBOL  
 STA 499+32 LT "STOP"

REMOVING SIGNS  
 3

TEMPORARY AND DURABLE 24 in STOP BAR  
 STA 499+32 LT TH #28

CURVE #13  
 PC = 475+20  
 PT = 481+65  
 R = 1,100ft  
 SEE SHEET 20 FOR  
 SUPERELEVATION DIAGRAM

CURVE #14  
 PC = 485+95  
 PT = 491+90  
 R = 1,500ft  
 SEE SHEET 21 FOR  
 SUPERELEVATION DIAGRAM



PAVEMENT CORES - ⊕

#	TOTAL DEPTH (in)	SOLID CORE	COMMENTS
4	7 1/2	YES	NON-DRAINABLE BASE

NOTE:  
 - NO PCC UNDER ANY CORES  
 - NO CORES OVER ASPHALTED (UNLESS NOTED)  
 - NO SHOULDER CORES

LEGEND

N	=	NEW
R	=	REMOVE
R&S	=	REMOVE & SALVAGE
S	=	SALVAGE
RET	=	RETAIN
B-TO-B	=	BACK TO BACK
⊕	=	CATCH BASIN/DI
⊕	=	EXISTING THROAT DI
I	=	MARKER POST
⊗	=	UTILITY POLE
⊗	=	UTIL. POLE W/UNDERGROUND UTIL.
⊗	=	DRIVE

STA 504+73 TO 507+00 RT  
 REMOVAL AND DISPOSAL OF GUARD RAIL  
~~STA 504+73 TO 505+10 RT~~  
 INSTALL MANUFACTURED TERMINAL SECTION (FLARED)  
 STA 505+10 TO 507+00 RT  
 INSTALL STEEL BEAM GUARD RAIL (GALVANIZED)

STA 505+13 TO 507+00 LT  
 REMOVAL AND DISPOSAL OF GUARD RAIL  
~~STA 505+00 TO 505+37 LT~~  
 INSTALL MANUFACTURED TERMINAL SECTION (FLARED)  
 STA 505+37 TO 507+00 LT  
 INSTALL STEEL BEAM GUARD RAIL (GALVANIZED)

## PAVING PROJECT LAYOUT SHEET #6

DESIGNED BY	BCE/PJM	DATE	8-05
DRAWN BY	C.E.A., INC.	DATE	8-05
DESIGN FILE NO.	/pave/04c036/p04c036.dgn		
PRF FILE	p04c036i06.1	DATE PLOTTED	II-JUN-2007 14:00
PROJ. NAME	<b>MORGAN - BRIGHTON</b>		
PROJ. NO.	<b>STP 2404(1)S</b>		
SHEET	13	OF	26 SHEETS