

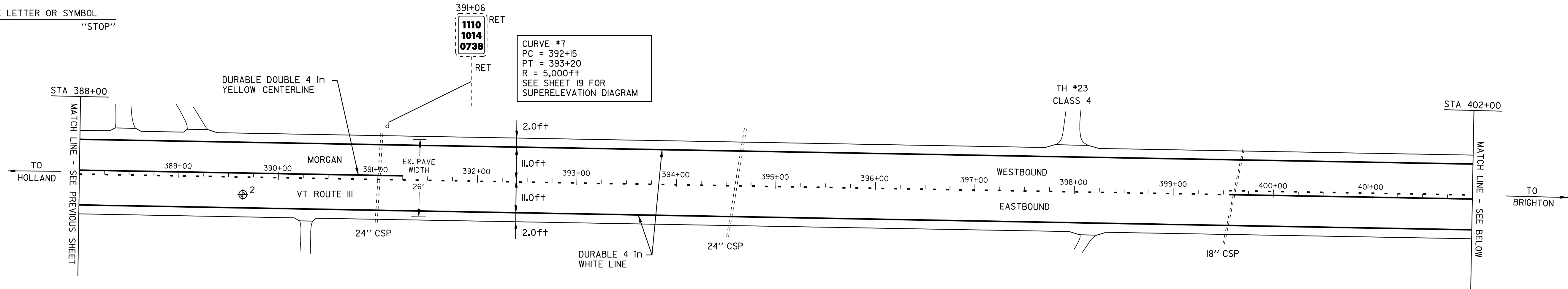
TEMPORARY AND DURABLE 4 in YELLOW LINE
 STA 388+00 TO 391+25 SOLID LT & DASHED RT
 STA 391+25 TO 399+60 DASHED LT & DASHED RT
 STA 399+60 TO 403+20 DASHED LT & SOLID RT
 STA 403+20 TO 417+00 SOLID LT&RT
 STA 403+50 DOUBLE SOLID RT
 (WITH CENTERLINE BREAKS FOR TOWN HIGHWAYS)

TEMPORARY AND DURABLE 4 in WHITE LINE
 STA 388+00 TO 417+00 SOLID LT&RT
 (WITH EDGE LINE BREAKS FOR TOWN HIGHWAYS)

TEMPORARY AND DURABLE 24 in STOP BAR
 STA 403+50 RT TH #24

REMOVING SIGNS
 3

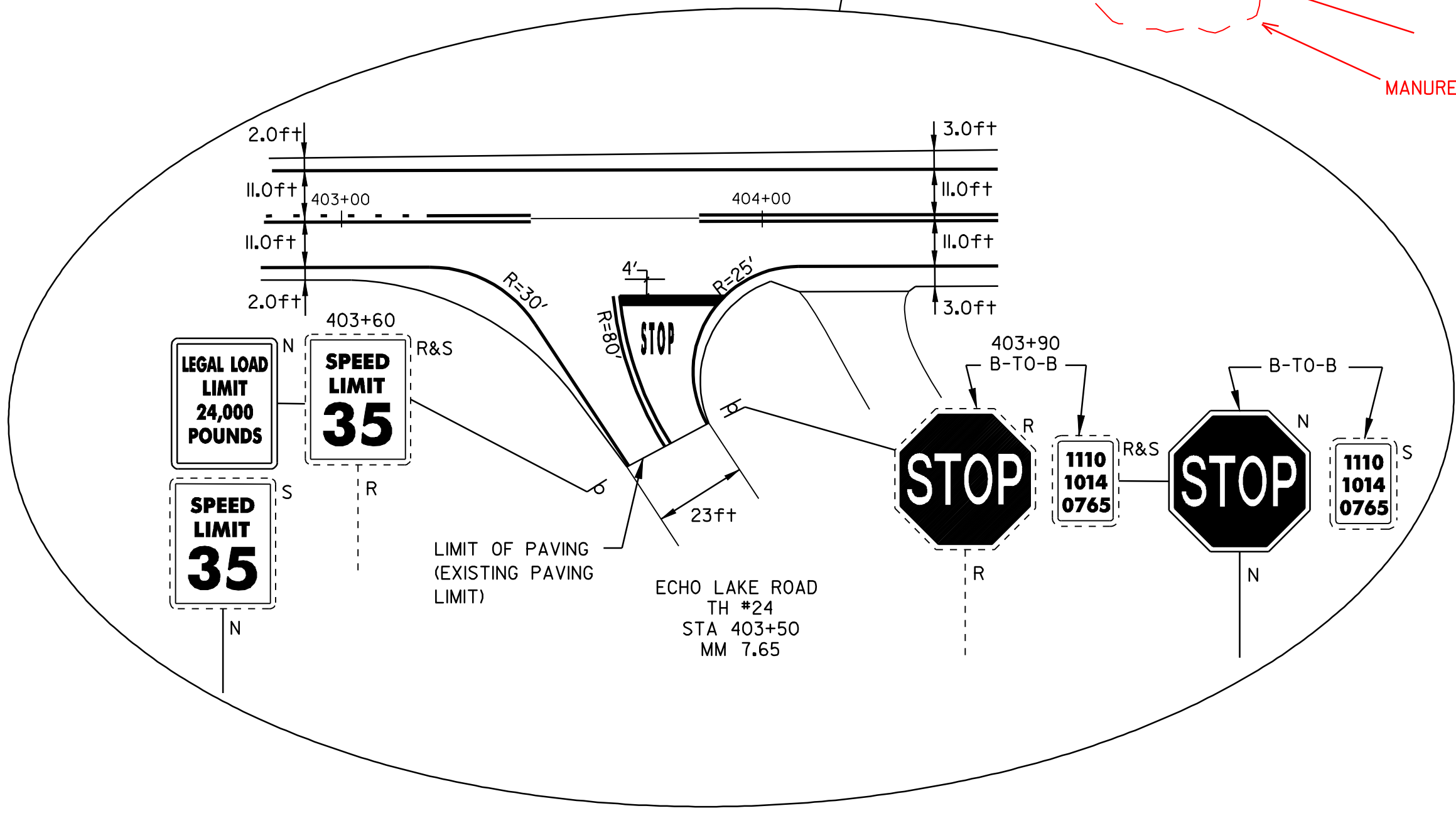
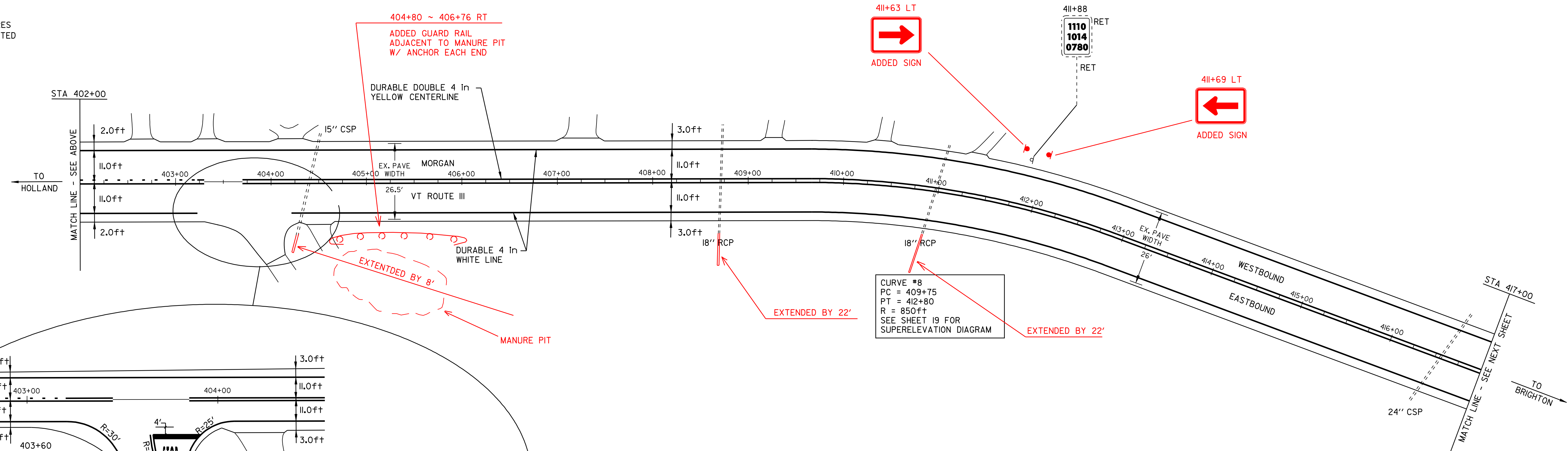
TEMPORARY AND DURABLE LETTER OR SYMBOL
 STA 403+50 RT "STOP"



PAVEMENT CORES -

#	TOTAL DEPTH (In)	SOLID CORE	COMMENTS
2	6	YES	NON-DRAINABLE BASE

NOTE:
 - NO PCC UNDER ANY CORES
 - NO CORES OVER ASPHALTED (UNLESS NOTED)
 - NO SHOULDER CORES



LEGEND

N	=	NEW
R	=	REMOVE
R&S	=	REMOVE & SALVAGE
S	=	SALVAGE
RET	=	RETAIN
B-T-O-B	=	BACK TO BACK
⊕	=	CATCH BASIN/DI
⊙	=	EXISTING THROAT DI
I	=	MARKER POST
⊗	=	UTILITY POLE
⊗/I	=	UTIL. POLE W/UNDERGROUND UTIL.
⌋	=	DRIVE

PAVING PROJECT LAYOUT SHEET #3

DESIGNED BY BCE/PJM DATE 8-05
 DRAWN BY C.E.A., INC. DATE 8-05
 DESIGN FILE NO. /pave/04c036/p04c036.dgn
 PRF FILE p04c036i03.i DATE PLOTTED II-JUN-2007 14:
 PROJ. NAME **MORGAN - BRIGHTON**
 PROJ. NO. **STP 2404(1)S**
 SHEET **10** OF **26** SHEETS