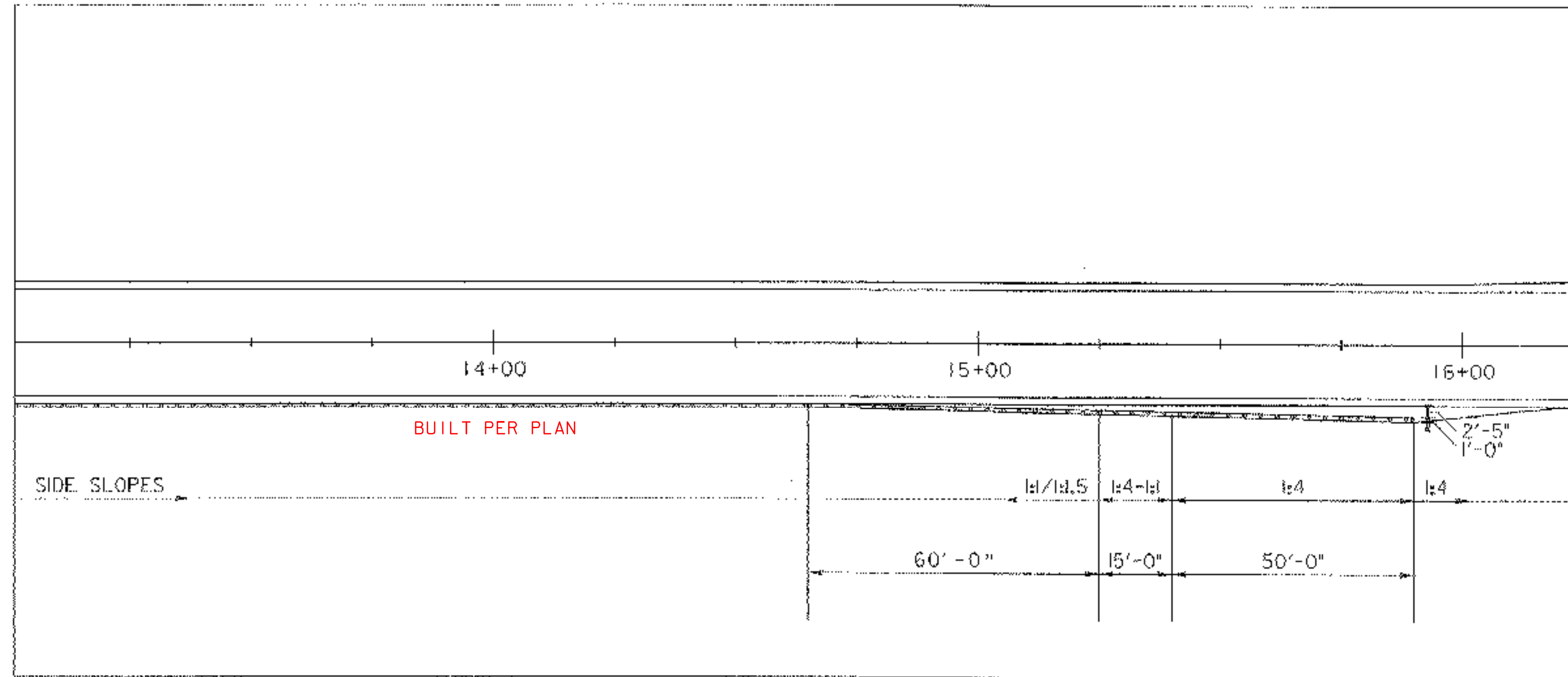
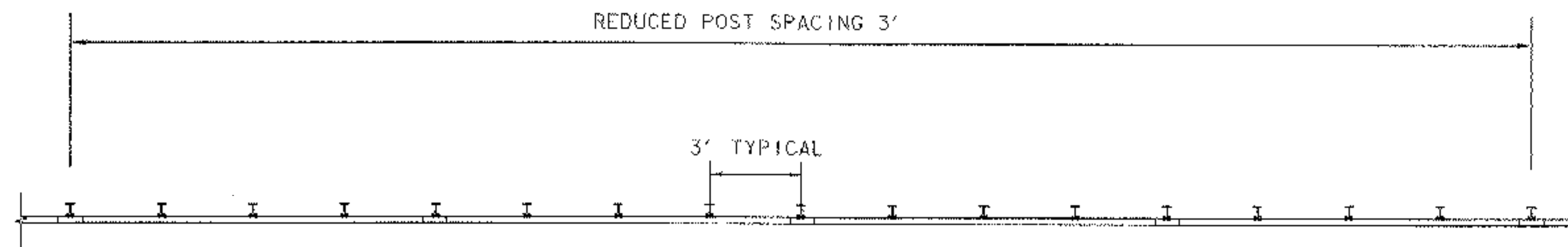


**VT ROUTE 50
GUARDRAIL DETAIL SHEET**



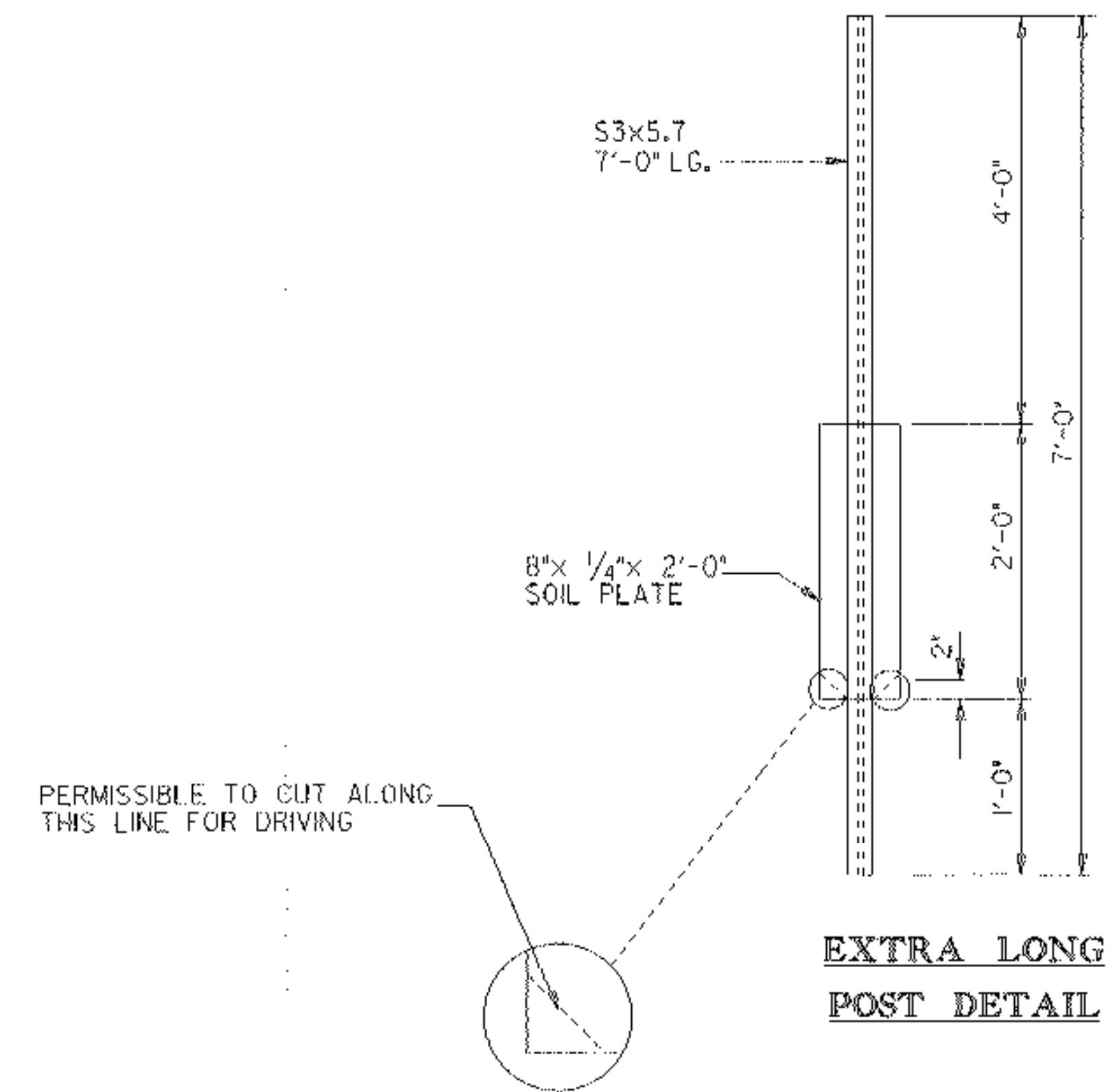
MANUFACTURED END TERMINAL (MOD.) GRADING DETAIL

STA 15+40.9 - STA 15+90.0 RT



BOX BEAM GUARDRAIL (MOD.) POST SPACING DETAIL

STA 4+74.1 - STA 15+40.9 RT
STA 5+89.1 - STA 12+15.9 LT



**EXTRA LONG
POST DETAIL**

NOTES

1. ALL BOX BEAM COMPONENTS, INCLUDING POSTS, HARDWARE, AND CONNECTIONS, SHALL CONFORM TO THE CURRENT SPECIFICATION FOR BOX BEAM GUARD RAIL. REFER TO STANDARD G-1B FOR DETAILS. BOX BEAM COMPONENTS, INCLUDING POSTS AND HARDWARE, SHALL BE GALVANIZED.
2. THREE FEET OF BACKING IS REQUIRED BEHIND THE FACE OF GUARDRAIL WITH 5'-3" POSTS. THIS CANNOT BE OBTAINED, THEREFORE 7 FOOT POSTS SHALL BE USED.

PROJECT NAME: HUBBARDTON
PROJECT NUMBER: ST 016K23

FILE NAME: PW\03c044\Design\03c044typ PLOT DATE: 21-MAR-2006
PROJECT LEADER: K. UPMAI DRAWN BY: J. DEVLIN
DESIGNED BY: J. DEVLIN CHECKED BY: R. DELLASANTA
GUARDRAIL DETAIL SHEET 2 SHEET 69 OF 92