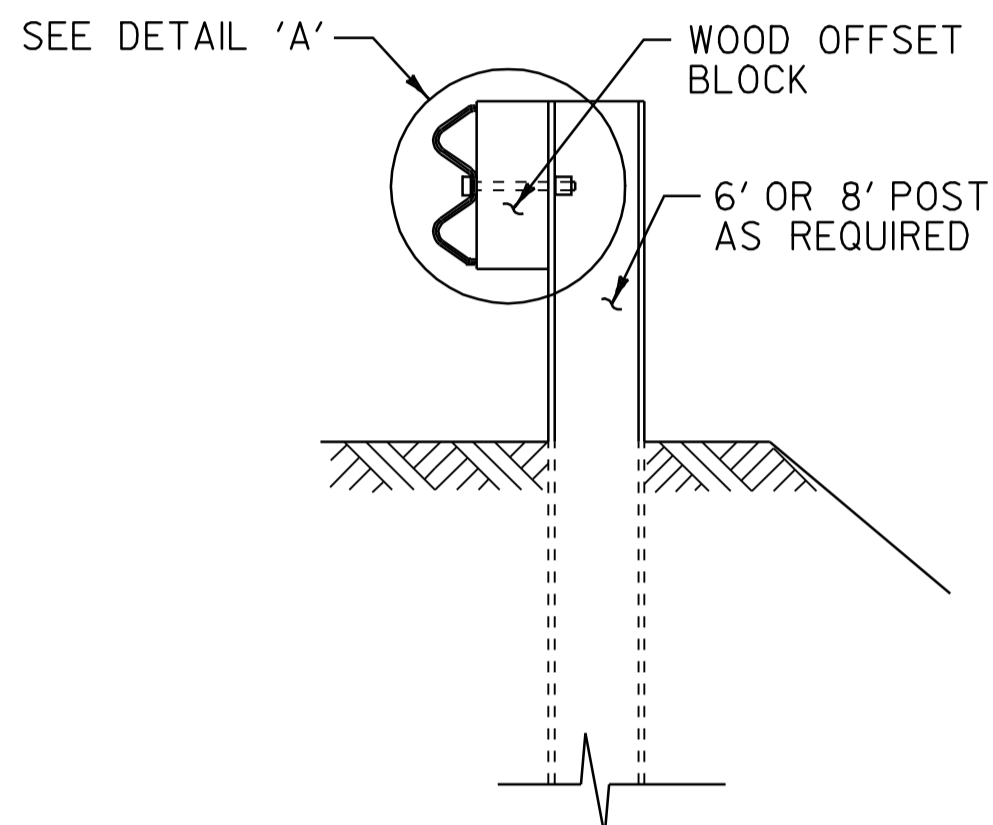


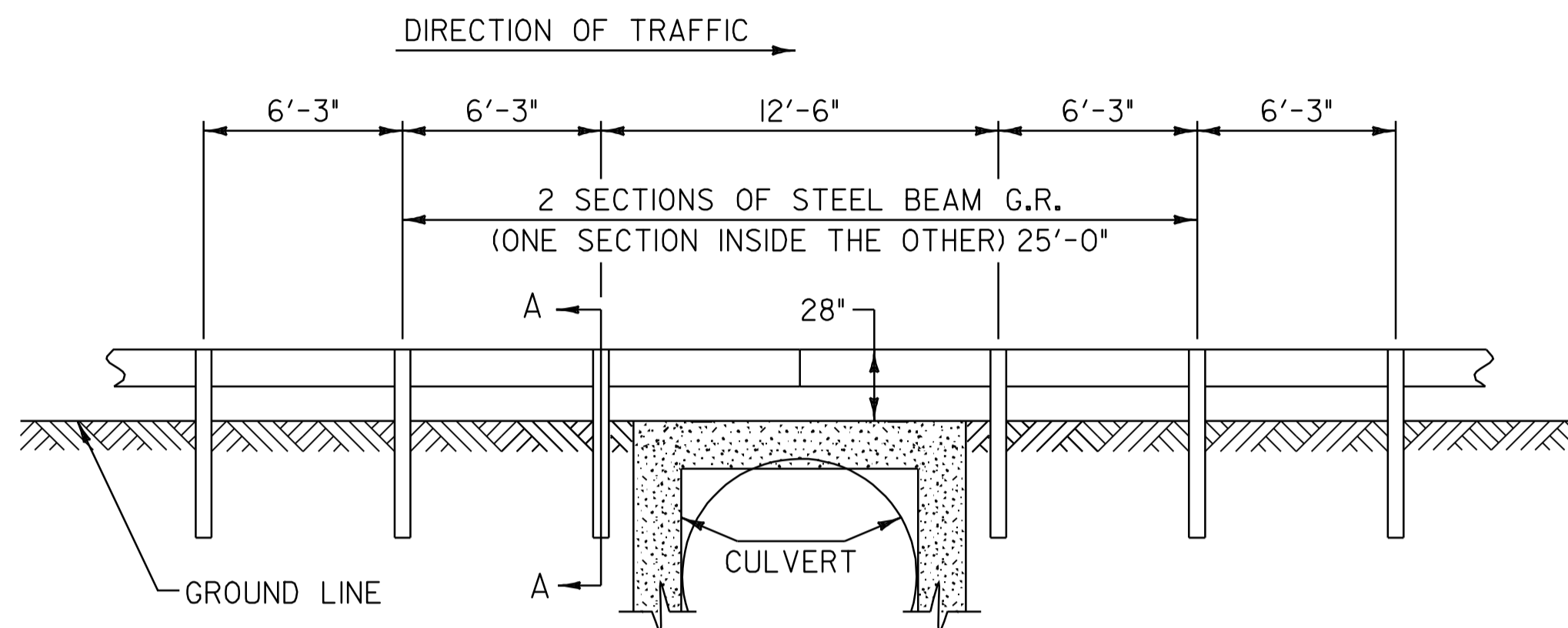
DETAIL A
N.T.S.



SECTION A-A
N.T.S.

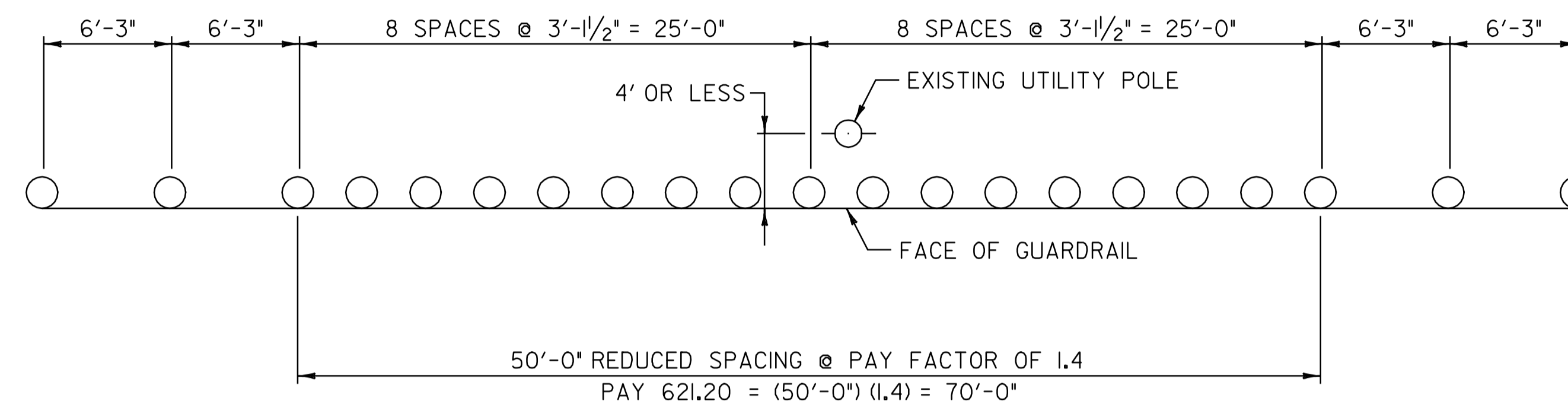
NOTES

1. SEE STANDARD G-IFOR STEEL BEAM GUARDRAIL DETAILS.
2. THIS WORK SHALL BE PAID UNDER ITEM 621.20 STEEL BEAM GUARDRAIL AT A PAY FACTOR OF 1.0.
3. THIS DETAIL TO BE USED AS INDICATED ON THE ITEM DETAIL SUMMARY SHEET OR AS DIRECTED BY THE RESIDENT ENGINEER.



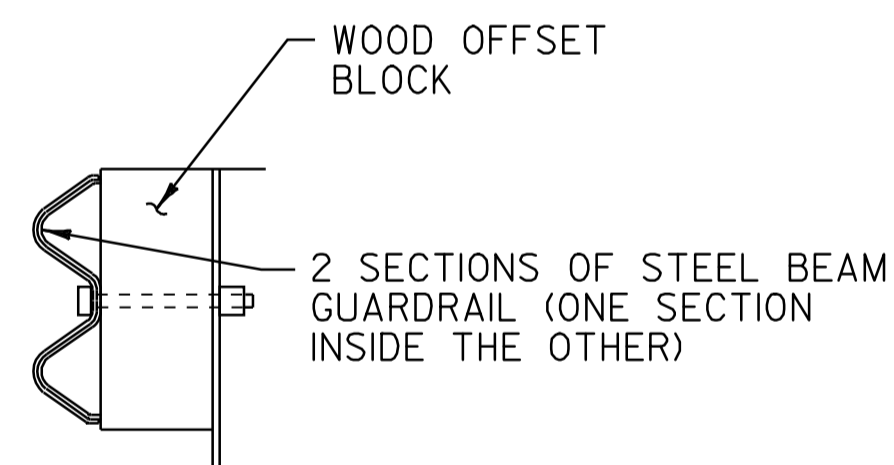
STEEL BEAM GUARDRAIL AT SMALL CULVERTS DETAIL

N.T.S.
VT. ROUTE 30 BRIDGE 95 CASTLETON STA. 280+15.68 LT
VT. ROUTE 30 BRIDGE 98 HUBBARDTON STA. 218+59.2 LT
VT. ROUTE 30 BRIDGE 98 HUBBARDTON STA. 218+59.2 RT

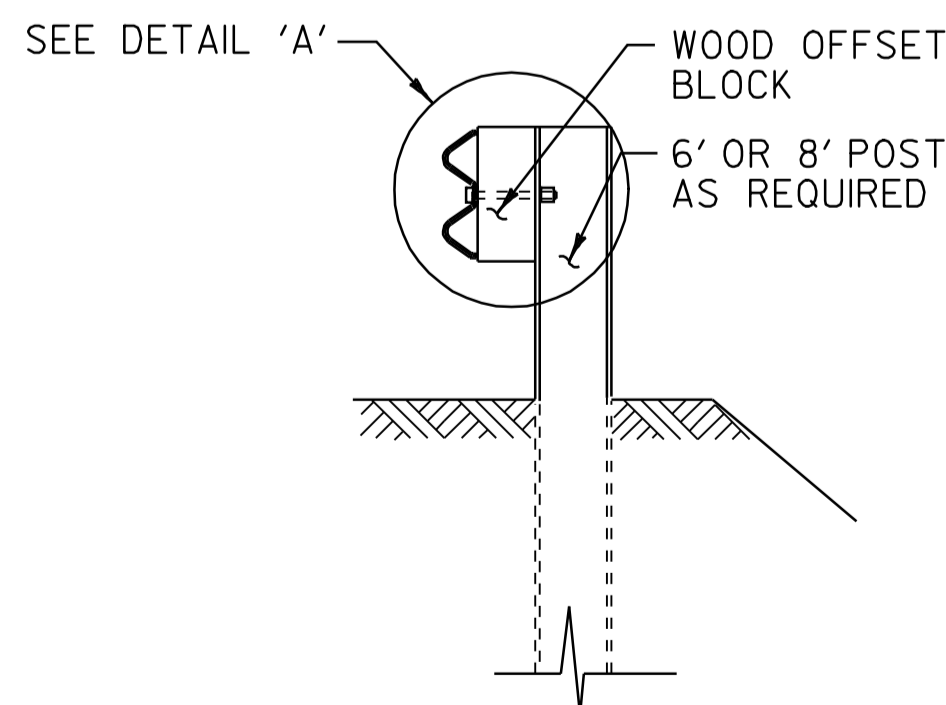


REDUCED STEEL BEAM GUARDRAIL POST SPACING AT UTILITY POLE DETAIL

N.T.S.
VT. ROUTE 30 HUBBARDTON STA. 205+83.0 LT
VT. ROUTE 30 HUBBARDTON STA. 207+36.0 LT
VT. ROUTE 30 HUBBARDTON STA. 209+86.0 LT



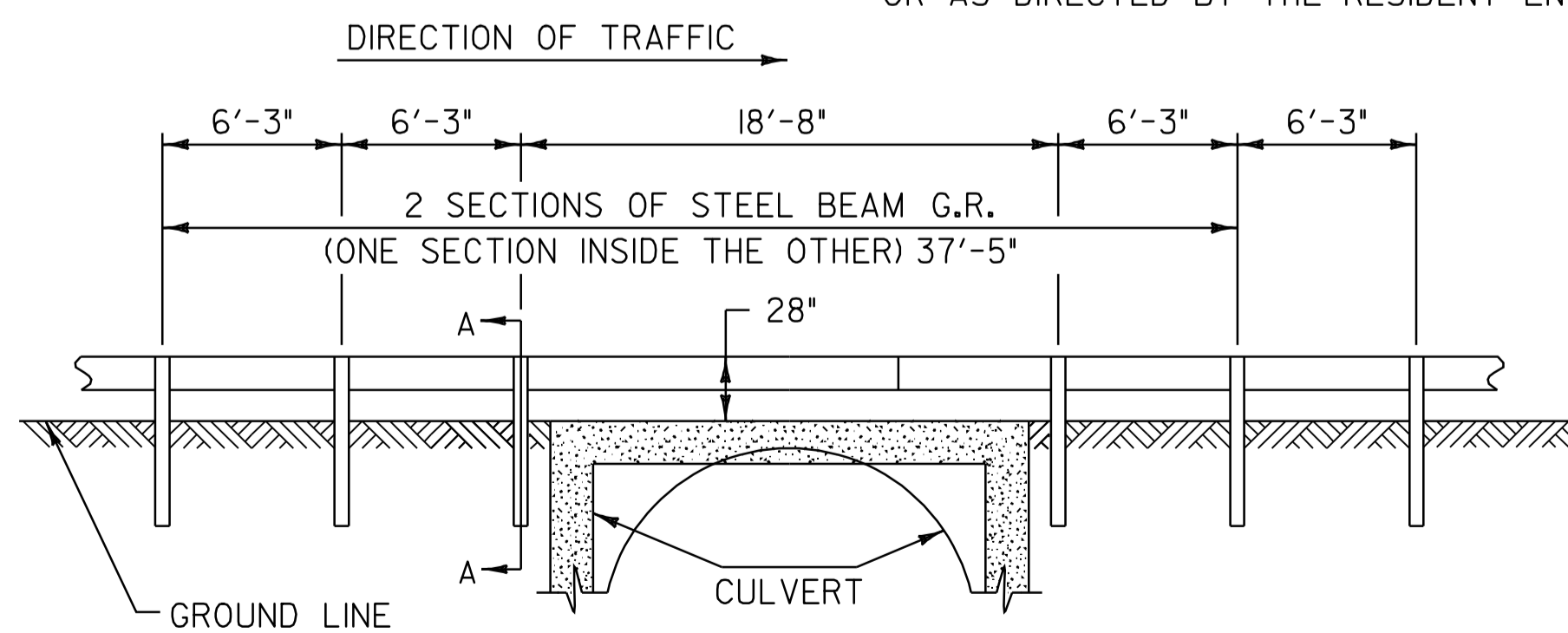
DETAIL A
N.T.S.



SECTION A-A
N.T.S.

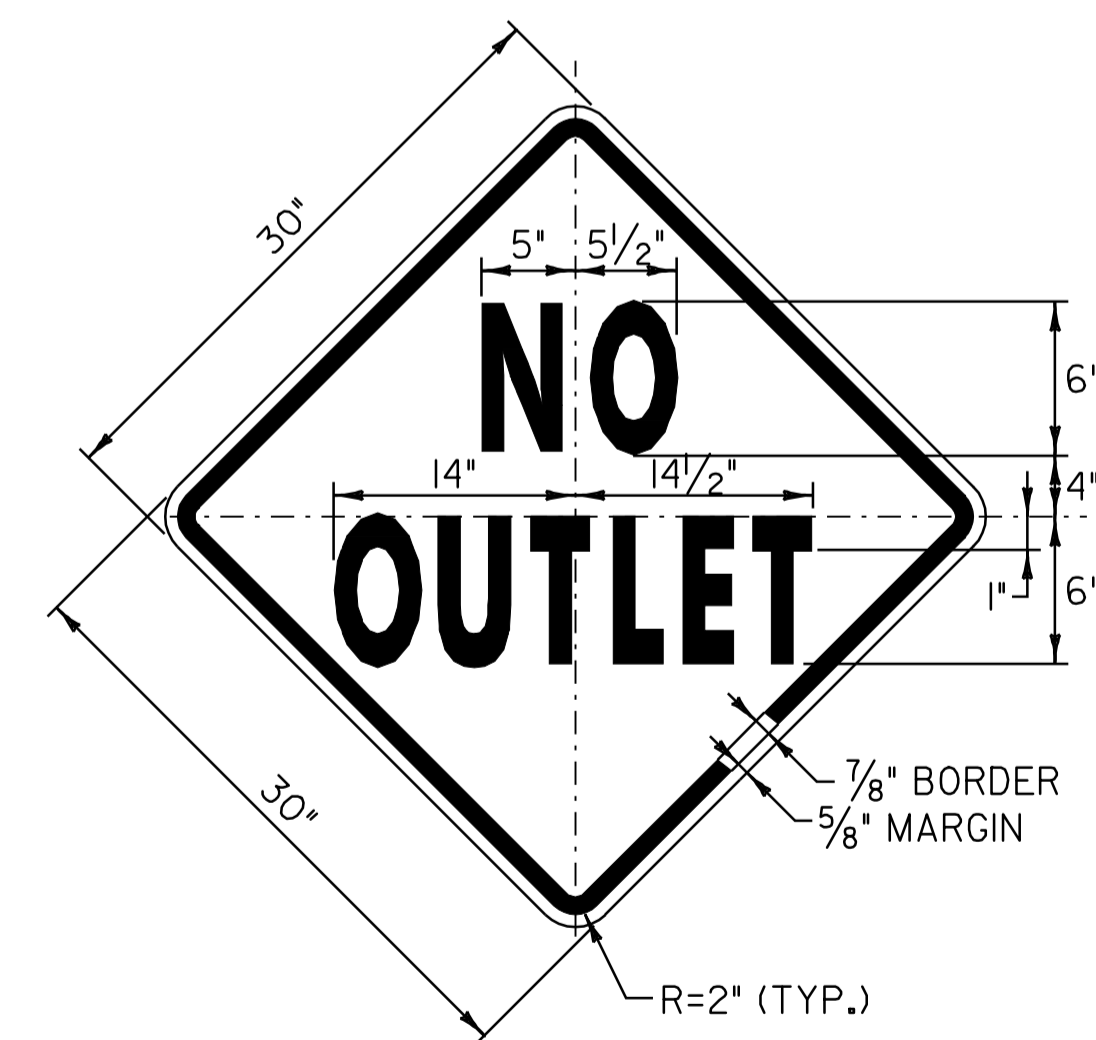
NOTES

1. SEE STANDARD G-IFOR STEEL BEAM GUARDRAIL DETAILS.
2. THIS WORK SHALL BE PAID UNDER ITEM 621.20 STEEL BEAM GUARDRAIL AT A PAY FACTOR OF 1.0.
3. THIS DETAIL TO BE USED AS INDICATED ON THE ITEM DETAIL SUMMARY SHEETS OR AS DIRECTED BY THE RESIDENT ENGINEER.



STEEL BEAM GUARDRAIL AT LARGE CULVERTS DETAIL

N.T.S.
VT. ROUTE 30 BRIDGE 95 CASTLETON 279+99.84



COLOR: BLACK BORDER & TEXT (REFLECTORIZED)
YELLOW BACKGROUND (REFLECTORIZED)

MATERIAL: PER VAOT STANDARD E-152
SIGN - VT. ROUTE 30

HUBBARDTON:
STA. 219+65.0, RT
STA. 252+17.0, RT

**MISCELLANEOUS
DETAILS
SHEET**

PROJECT NAME: CASTLETON - SUDBURY

PROJECT NUMBER: STP 2402(I)S

FILE NAME: p04c028.dgn
PROJECT LEADER: D.E.G.
DESIGNED BY: D.W.E.
IPARM FILE: p04c028md.1

PLOT DATE: 11-JUN-2007 13:34
DRAWN BY: C.A.K.
CHECKED BY: D.E.G.
SHEET 49 OF 92