

646.40 DURABLE 4" WHITE LINE (THERMOPLASTIC)
 (ALL LINES WILL INCLUDE EDGE LINE BREAKS AND RADIUS FOR TOWN HIGHWAYS)
 SUDBURY:
 STA. 151+00.00 - STA. 183+00.00 EDGE LINE LT & RT

646.41 DURABLE 4" YELLOW LINE (THERMOPLASTIC)
 (ALL LINES WILL INCLUDE C/L BREAKS FOR TOWN HIGHWAYS) S=SOLID, D=DASHED
 SUDBURY:
 STA. 151+00.00 - STA. 155+76.00 LT C RT S D
 STA. 155+76.00 - STA. 163+68.00 D - S
 STA. 163+68.00 - STA. 183+00.00 S - S
 STA. 176+98.56 DOUBLE SOLID LT, VT. ROUTE 73

646.60 TEMPORARY 4" WHITE LINE (PAINT)
 (ALL LINES WILL INCLUDE EDGE LINE BREAKS AND RADIUS FOR TOWN HIGHWAYS)
 SUDBURY:
 STA. 151+00.00 - STA. 183+00.00 EDGE LINE LT & RT

646.61 TEMPORARY 4" YELLOW LINE (PAINT)
 (ALL LINES WILL INCLUDE C/L BREAKS FOR TOWN HIGHWAYS) S=SOLID, D=DASHED
 SUDBURY:
 STA. 151+00.00 - STA. 155+76.00 LT C RT S D
 STA. 155+76.00 - STA. 163+68.00 D - S
 STA. 163+68.00 - STA. 183+00.00 S - S
 STA. 176+98.56 DOUBLE SOLID LT, VT. ROUTE 73

646.46 DURABLE 24" STOP BAR (THERMOPLASTIC)
 HUBBARDTON:
 STA. 176+98.56 LT, VT. ROUTE 73

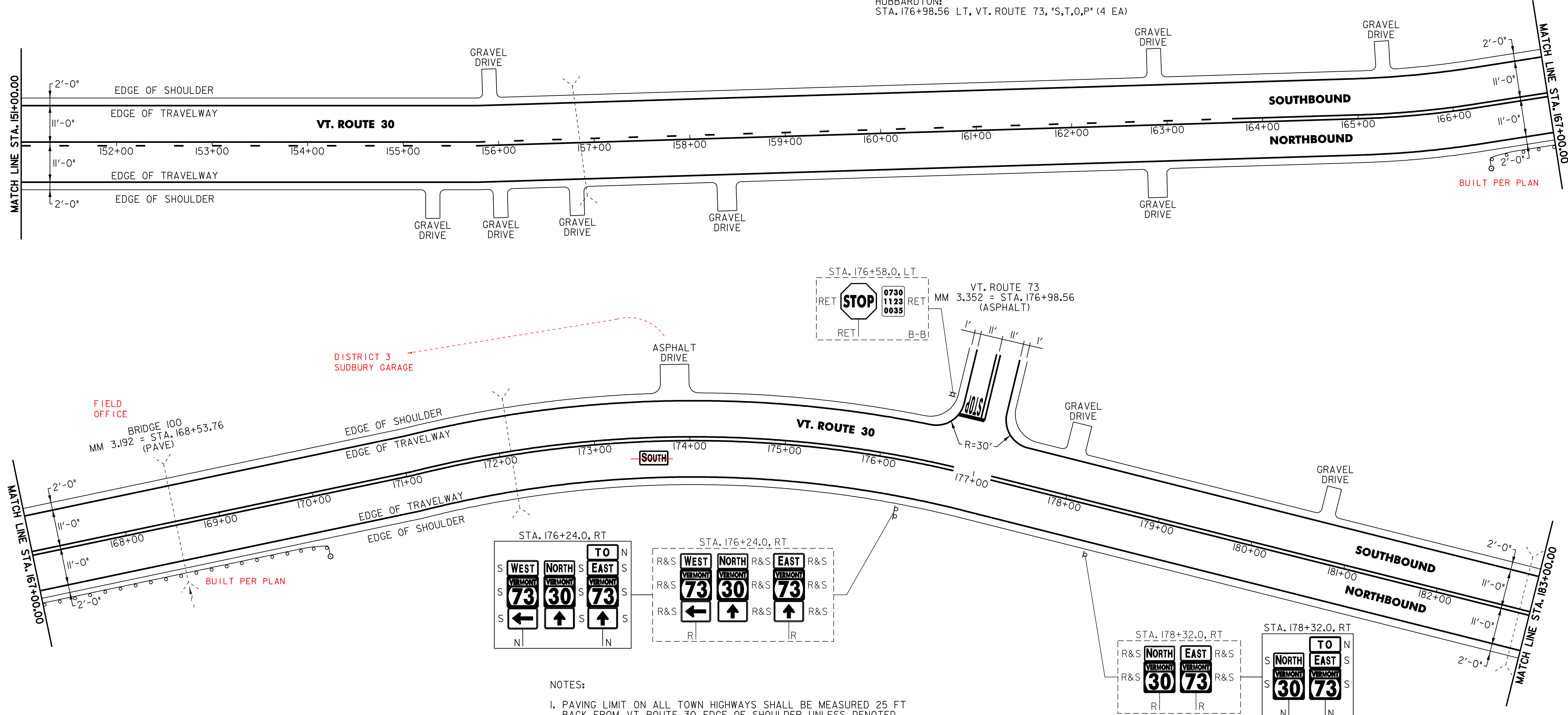
646.66 TEMPORARY 24" STOP BAR (PAINT)
 HUBBARDTON:
 STA. 176+98.56 LT, VT. ROUTE 73

646.50 DURABLE LETTER OR SYMBOL (THERMOPLASTIC)
 HUBBARDTON:
 STA. 176+98.56 LT, VT. ROUTE 73, "S,T,O,P" (4 EA)

646.70 TEMPORARY LETTER OR SYMBOL (PAINT)
 HUBBARDTON:
 STA. 176+98.56 LT, VT. ROUTE 73, "S,T,O,P" (4 EA)

675.50 REMOVING SIGNS
 AS SHOWN - 13

675.60 ERECTING SALVAGED SIGNS
 AS SHOWN - 13



621.20 STEEL BEAM GUARDRAIL (GALVANIZED)
 SUDBURY:
 STA. 166+67.5 - STA. 169+67.5 RT (300.0 LF)

621.505 MANUFACTURED TERMINAL SECTION (FLARED)
 SUDBURY:
 STA. 166+30.0 - STA. 166+67.5 RT
 STA. 169+67.5 - STA. 170+05.0 RT

621.80 REMOVAL & DISPOSAL OF GUARDRAIL
 SUDBURY:
 STA. 168+07.0 - STA. 168+58.0 RT (51.0 LF)

676.10 DELINEATORS WITH STEEL POSTS
 TYPE I WHITE
 SUDBURY:
 STA. 166+30.0 RT
 STA. 170+05.0 RT

- NOTES:
- PAVING LIMIT ON ALL TOWN HIGHWAYS SHALL BE MEASURED 25 FT BACK FROM VT. ROUTE 30 EDGE OF SHOULDER UNLESS DENOTED OTHERWISE ON THE PLANS OR AS DIRECTED BY THE RESIDENT ENGINEER.
 - THE CONTRACTOR SHOULD BE AWARE THAT EXISTING BURIED UTILITIES (SUCH AS PHONE CABLE, FIBER OPTIC CABLE, ETC.) ARE LOCATED ADJACENT TO VT. ROUTE 30 WITHIN THE PROJECT LIMITS. THE CONTRACTOR IS RESPONSIBLE FOR CONTACTING "DIG SAFE" AT 1-888-344-7233 TO DETERMINE THE EXACT LOCATIONS OF THESE UTILITIES PRIOR TO INSTALLING GUARDRAIL, CLEANING DITCHES OR PERFORMING ANY OTHER OPERATIONS THAT MAY DISTURB THE EXISTING SUBSURFACE CONDITIONS.

SIGN LEGEND
 R = REMOVE
 S = SALVAGE
 N = NEW
 RET = RETAIN
 B-B = BACK TO BACK
 EXISTING = - - - - -
 NEW = _____

PROJECT LAYOUT SHEET

PROJECT NAME: CASTLETON - SUDBURY
 PROJECT NUMBER: STP 2402(1)S

FILE NAME: p04c028.dgn
 PROJECT LEADER: D.E.G.
 DESIGNED BY: D.W.E.
 IPARM FILE: p04c028120.i

PLOT DATE: 11-JUN-2007 13:33
 DRAWN BY: C.A.K.
 CHECKED BY: D.E.G.
 SHEET 32 OF 92