

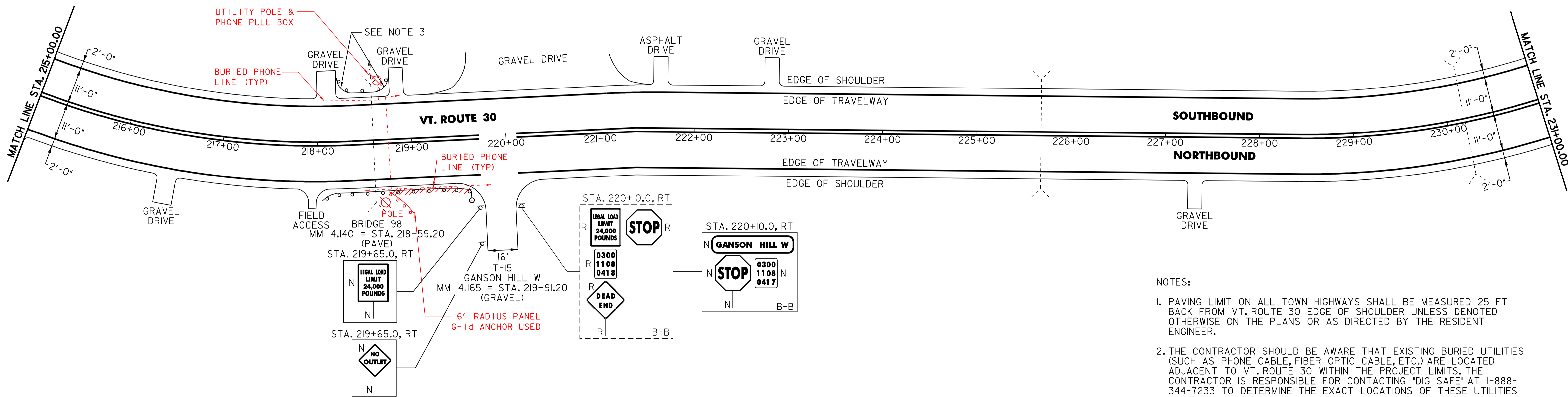
646.40 DURABLE 4" WHITE LINE (THERMOPLASTIC)
 (ALL LINES WILL INCLUDE EDGE LINE BREAKS AND RADIUS FOR TOWN HIGHWAYS)
 HUBBARDTON:
 STA. 215+00.00 - STA. 231+00.00 EDGE LINE LT & RT

646.41 DURABLE 4" YELLOW LINE (THERMOPLASTIC)
 (ALL LINES WILL INCLUDE C/L BREAKS FOR TOWN HIGHWAYS) S=SOLID, D=DASHED
 HUBBARDTON:
 STA. 215+00.00 - STA. 231+00.00 LT C RT
 S - S

646.60 TEMPORARY 4" WHITE LINE (PAINT)
 (ALL LINES WILL INCLUDE EDGE LINE BREAKS AND RADIUS FOR TOWN HIGHWAYS)
 HUBBARDTON:
 STA. 215+00.00 - STA. 231+00.00 EDGE LINE LT & RT

646.61 TEMPORARY 4" YELLOW LINE (PAINT)
 (ALL LINES WILL INCLUDE C/L BREAKS FOR TOWN HIGHWAYS) S=SOLID, D=DASHED
 HUBBARDTON:
 STA. 215+00.00 - STA. 231+00.00 LT C RT
 S - S

675.50 REMOVING SIGNS
 AS SHOWN - 4



621.505 MANUFACTURED TERMINAL SECTION (FLARED)
 HUBBARDTON: ~~INSTALLED AND THEN ELIMINATED PER STA. 219+37.5 - STA. 219+75.0 RT~~ PROPERTY OWNER REQUEST

621.60 ANCHOR FOR STEEL BEAM RAIL
 HUBBARDTON:
 STA. 218+21.0 RT
 STA. 218+33.0 LT
 STA. 218+40.7 LT
 STA. 218+72.3 LT
 STA. 218+80.0 LT
 STA. 219+37.5 RT +/-

621.80 REMOVAL & DISPOSAL OF GUARDRAIL
 HUBBARDTON:
 STA. 218+15.0 - STA. 219+17.0 RT (102.0 LF)
 STA. 218+33.0 - STA. 218+80.0 LT (47.0 LF)

676.10 DELINEATORS WITH STEEL POSTS
 TYPE I WHITE
 HUBBARDTON:
 STA. 219+75.0 RT

SIGN LEGEND
 R = REMOVE
 S = SALVAGE
 N = NEW
 RET = RETAIN
 B-B = BACK TO BACK
 EXISTING = - - - - -
 NEW = _____

- NOTES:
- PAVING LIMIT ON ALL TOWN HIGHWAYS SHALL BE MEASURED 25 FT BACK FROM VT. ROUTE 30 EDGE OF SHOULDER UNLESS DENOTED OTHERWISE ON THE PLANS OR AS DIRECTED BY THE RESIDENT ENGINEER.
 - THE CONTRACTOR SHOULD BE AWARE THAT EXISTING BURIED UTILITIES (SUCH AS PHONE CABLE, FIBER OPTIC CABLE, ETC.) ARE LOCATED ADJACENT TO VT. ROUTE 30 WITHIN THE PROJECT LIMITS. THE CONTRACTOR IS RESPONSIBLE FOR CONTACTING "DIG SAFE" AT 1-888-344-7233 TO DETERMINE THE EXACT LOCATIONS OF THESE UTILITIES PRIOR TO INSTALLING GUARDRAIL, CLEANING DITCHES OR PERFORMING ANY OTHER OPERATIONS THAT MAY DISTURB THE EXISTING SUBSURFACE CONDITIONS.
 - THE CONTRACTOR SHALL INSTALL A NEW 16' RADIUS PANEL WITH ANCHORS AT EACH END AS DIRECTED BY THE RESIDENT ENGINEER.

621.20 STEEL BEAM GUARDRAIL (GALVANIZED) (MOD. - 8' POSTS)
 HUBBARDTON:
 STA. 218+10.5 - STA. 219+37.5 RT (127.0 LF)
 STA. 218+33.0 - STA. 218+80.0 LT (53.0 LF)

PROJECT LAYOUT SHEET

PROJECT NAME: CASTLETON - SUDBURY
 PROJECT NUMBER: STP 2402(I)S

FILE NAME: p04c028.dgn PLOT DATE: 11-JUN-2007 13:33
 PROJECT LEADER: D.E.G. DRAWN BY: C.A.K.
 DESIGNED BY: D.W.E. CHECKED BY: D.E.G.
 IPARM FILE: p04c028I13.I SHEET 25 OF 92