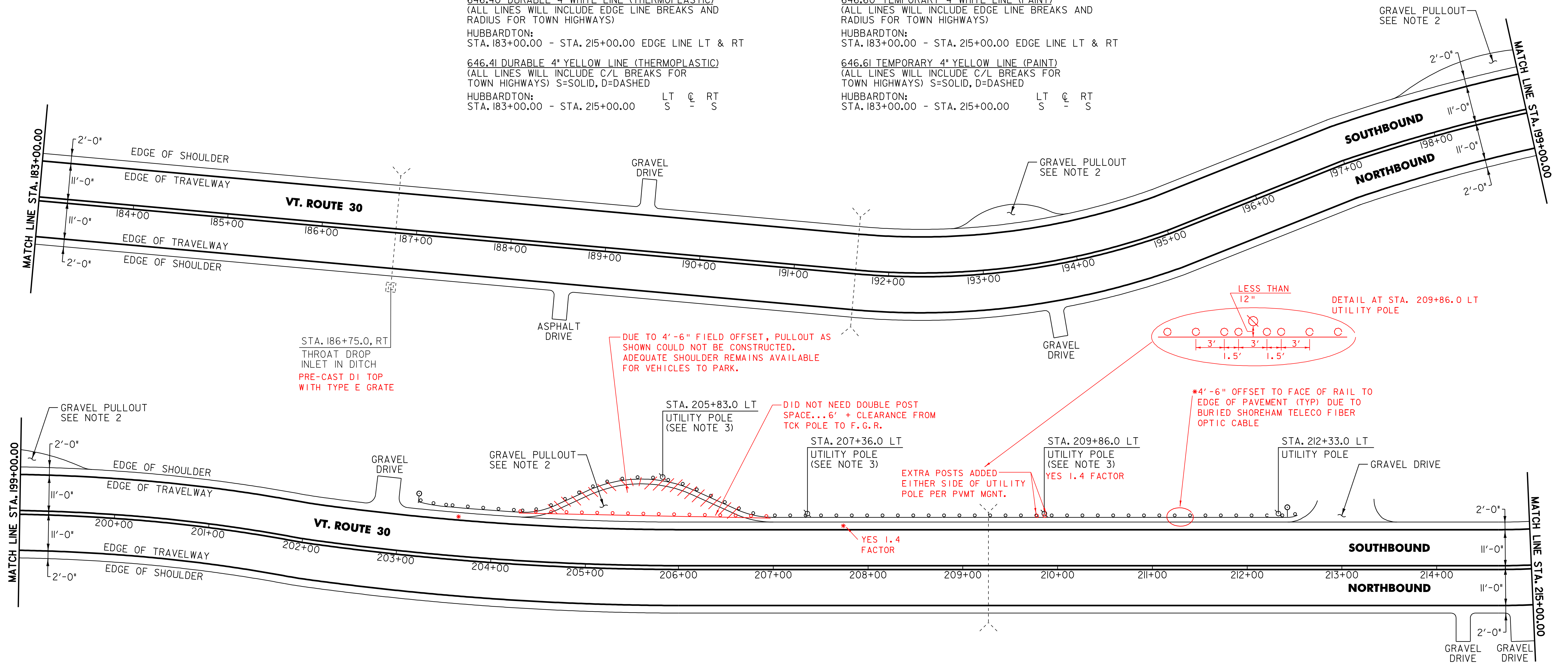


646.40 DURABLE 4" WHITE LINE (THERMOPLASTIC)
 (ALL LINES WILL INCLUDE EDGE LINE BREAKS AND RADIUS FOR TOWN HIGHWAYS)
 HUBBARDTON:
 STA. 183+00.00 - STA. 215+00.00 EDGE LINE LT & RT

646.41 DURABLE 4" YELLOW LINE (THERMOPLASTIC)
 (ALL LINES WILL INCLUDE C/L BREAKS FOR TOWN HIGHWAYS) S=SOLID, D=DASHED
 HUBBARDTON:
 STA. 183+00.00 - STA. 215+00.00 LT S C RT S

646.60 TEMPORARY 4" WHITE LINE (PAINT)
 (ALL LINES WILL INCLUDE EDGE LINE BREAKS AND RADIUS FOR TOWN HIGHWAYS)
 HUBBARDTON:
 STA. 183+00.00 - STA. 215+00.00 EDGE LINE LT & RT

646.61 TEMPORARY 4" YELLOW LINE (PAINT)
 (ALL LINES WILL INCLUDE C/L BREAKS FOR TOWN HIGHWAYS) S=SOLID, D=DASHED
 HUBBARDTON:
 STA. 183+00.00 - STA. 215+00.00 LT S C RT S



604.412 REHABING DI, CB OR MH, CLASS I
 HUBBARDTON:
 STA. 186+75.0 RT

621.20 STEEL BEAM GUARDRAIL (GALVANIZED) (MOD. - 8' POST)
 HUBBARDTON:
 STA. 203+55.0 - STA. 212+05.0 LT **825 LF F.M. (NO PULL-OUT) (910.0 LF) + 1.4 FACTOR FOR POLES (NOTES)**

621.505 MANUFACTURED TERMINAL SECTION (FLARED)
 HUBBARDTON:
 STA. 203+17.5 - STA. 203+55.0 LT

621.505 MANUFACTURED TERMINAL SECTION (TANGENT)
 HUBBARDTON:
 STA. 212+05.0 - STA. 212+55.0 LT

621.80 REMOVAL & DISPOSAL OF GUARDRAIL
 HUBBARDTON:
 STA. 203+21.0 - STA. 212+55.0 LT (934.0 LF)

676.10 DELINEATORS WITH STEEL POSTS
 TYPE I WHITE
 HUBBARDTON:
 STA. 203+17.5 LT
 STA. 212+55.0 LT

NOTES:

- THE CONTRACTOR SHOULD BE AWARE THAT EXISTING BURIED UTILITIES (SUCH AS PHONE CABLE, FIBER OPTIC CABLE, ETC.) ARE LOCATED ADJACENT TO VT. ROUTE 30 WITHIN THE PROJECT LIMITS. THE CONTRACTOR IS RESPONSIBLE FOR CONTACTING "DIG SAFE" AT 1-888-344-7233 TO DETERMINE THE EXACT LOCATIONS OF THESE UTILITIES PRIOR TO INSTALLING GUARDRAIL, CLEANING DITCHES OR PERFORMING ANY OTHER OPERATIONS THAT MAY DISTURB THE EXISTING SUBSURFACE CONDITIONS.
- PROVIDE A 5 FT WIDE 1 1/4" TYPE IV APRON FOR THE EXISTING GRAVEL PULLOUT. ANY REQUIRED EXCAVATION SHALL BE PERFORMED AS DIRECTED BY THE RESIDENT ENGINEER AND PAID FOR UNDER ITEM 608.25 ALL PURPOSE EXCAVATOR RENTAL, TYPE I.
- SEE SHEET 49 FOR REDUCED STEEL BEAM GUARDRAIL POST SPACING AT UTILITY POLE DETAIL.

PROJECT LAYOUT SHEET

PROJECT NAME: CASTLETON - SUDBURY
 PROJECT NUMBER: STP 2402(I)S
 FILE NAME: p04c028.dgn
 PROJECT LEADER: D.E.G.
 DESIGNED BY: D.W.E.
 IPARM FILE: p04c028I1.i

PLOT DATE: 11-JUN-2007 13:53
 DRAWN BY: C.A.K.
 CHECKED BY: D.E.G.
 SHEET 24 OF 92