

# TRAFFIC CONTROL - PHASE 2

## REMOVE TEMPORARY 4" PAVEMENT MARKINGS

### WHITE (EDGE LINE)

LEFT  
400+00 - 404+79

RIGHT  
400+10 - 404+94

### YELLOW (CENTER LINE - DOUBLE)

399+00 - 405+75

## TEMPORARY PAVEMENT MARKINGS - (TYPE II TAPE)

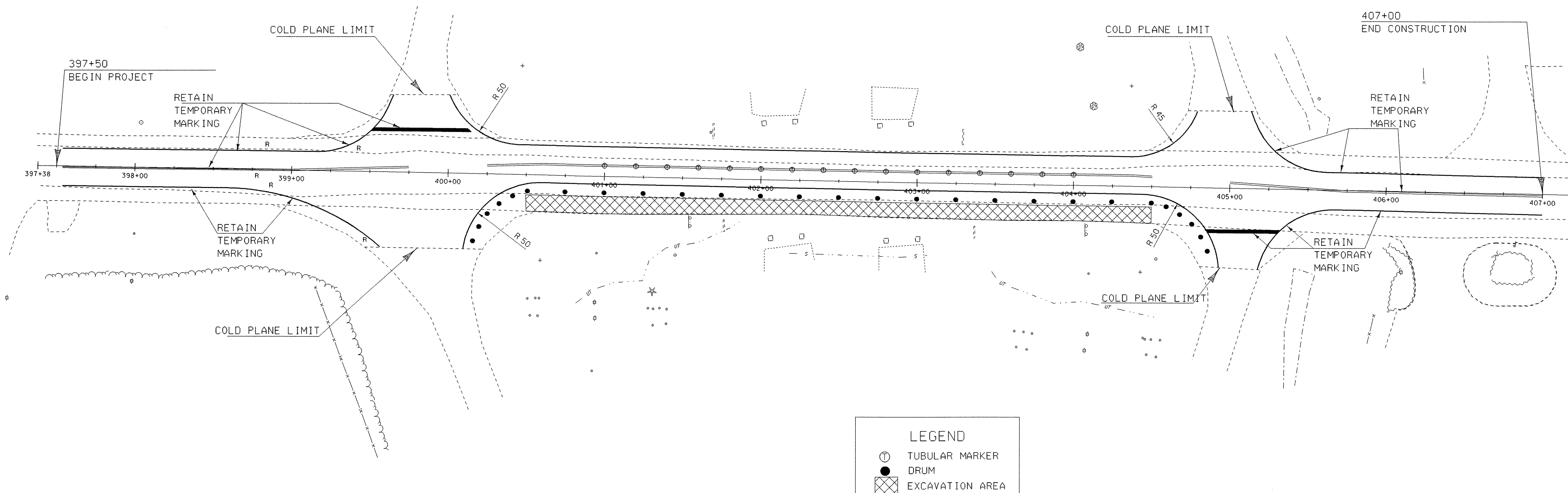
### 4" WHITE (EDGE LINE)

LEFT  
400+00 - 404+79

RIGHT  
400+10 - 404+94

### 4" YELLOW (CENTER LINE - DOUBLE)

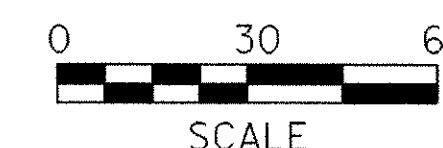
399+00 OFF 0.00 - 399+75 OFF 3.25 LT  
400+25 OFF 5.40 LT - 400+61 OFF 7.00 LT  
400+61 OFF 7.00 LT - 404+39 OFF 7.00 LT  
404+39 OFF 7.00 LT - 404+50 OFF 6.40 LT  
405+00 OFF 3.60 LT - 405+75 OFF 0.00



### PHASE 2 SEQUENCE:

1. REMOVE TEMPORARY CENTER LINE.
2. REMOVE TEMPORARY EDGE LINES.
3. INSTALL TEMPORARY CENTER LINE.
4. INSTALL TEMPORARY EDGE LINES.
5. INSTALL TUBULAR MARKERS (AT 20 FOOT INTERVALS) ON THE TEMPORARY CENTER LINE FROM 401+00 TO 404+00.
6. INSTALL DRUMS AT 25 FOOT INTERVALS FROM 400+00 RT TO 404+75 RT (10 FOOT INTERVALS AT RADII).
7. PROCEED WITH SHOULDER CONSTRUCTION.

NOTE: SEE THE MUTCD (SECTION 6F.55) CHANNELIZING DEVICES FOR STANDARDS AND SPECIFICATIONS.



## TRAFFIC CONTROL - PHASE 2

PROJECT NAME: SWANTON  
PROJECT NUMBER: HES 036-1(12)

FILE NAME: tb212tcl.dgn  
PROJECT LEADER: nyquist  
DESIGNED BY: jfg  
212trcntr121

PLOT DATE: 14-SEP-2006  
DRAWN BY: jfg  
CHECKED BY: traffic  
SHEET 16 OF 16