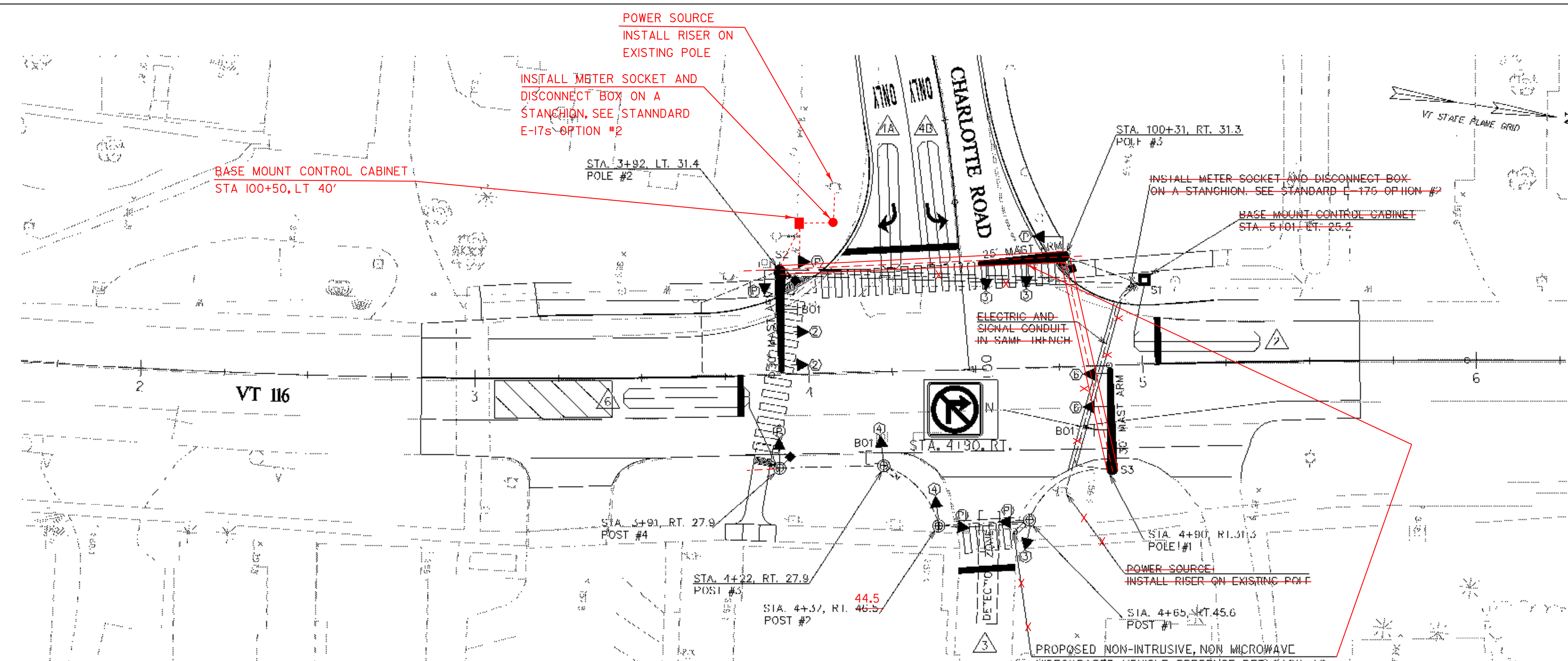


LIST OF MAJOR EQUIPMENT

EQUIPMENT ITEM 678.15	QUANTITY
ECONOLITE TRAFFIC SIGNAL CONTROLLER	1
ECONOLITE P44 CONTROLLER CABINET WITH GENERATOR HOOKUP PLUG ON 15-INCH EXTENDED BASE, PAINTED FLAT BLACK, ON A CONC. FOUNDATION WITH ANCILLARY CONTROL EQUIPMENT.	1
FLAT BLACK PAINTED STEEL MAST ARM SIGNAL POLE WITH TWENTY-FIVE FOOT (25') SPECIAL CURVED MAST ARM.	1
FLAT BLACK PAINTED STEEL MAST ARM SIGNAL POLE WITH THIRTY FOOT (30') SPECIAL CURVED MAST ARM.	2
FLAT BLACK PAINTED PEDESTAL POST.	4
ONE-WAY, 3-SECTION, 12-INCH POLYCARBONATE MAST ARM MOUNTED LED TRAFFIC SIGNAL HEAD WITH TUNNEL VISORS AND LOUVERED BACKPLATE WITH ALL PIECES PAINTED FLAT BLACK.	6
ONE-WAY, 3-SECTION, 12-INCH POLYCARBONATE POST MOUNTED LED TRAFFIC SIGNAL HEAD WITH TUNNEL VISORS AND LOUVERED BACKPLATE WITH ALL PIECES PAINTED FLAT BLACK.	3
POST MOUNTED 16-INCH LED PEDESTRIAN SIGNAL HEAD WITH SOLID WALKING PERSON AND HAND SYMBOLS	3
POST MOUNTED 16-INCH LED PEDESTRIAN SIGNAL HEAD WITH SOLID WALKING PERSON AND HAND SYMBOLS	1
POST MOUNTED 16 INCH LED PEDESTRIAN SIGNAL HEAD WITH SOLID WALKING PERSON, BICYCLE AND HAND SYMBOLS	2
VTRANS SPEC ACCESSIBLE PEDESTRIAN PUSHBUTTONS (PER SPECIAL PROVISION 6(B) AND (5)(2)) WITH R10 4 TYPE SIGN ASSEMBLY & AUDIBLE PEDESTRIAN CROSSING INDICATORS	3
NON-INTRUSIVE, NON-MICROWAVE VIDEO BASED PRESENCE DETECTION SYSTEM, TRAFICAM OR APPROVED EQUAL	1
ASTRO BRACKETS	9
SINGLE CHANNEL WIRE LOOP DETECTOR AMPLIFIERS	3
SINGLE CHANNEL WIRE LOOP DETECTOR AMPLIFIERS WITH DISPLAY	1
ELEC. SERVICE CONNECTION/POWER DROP STANCHION	1
MAST ARM MOUNTED LED BLANKOUT	1
POST MOUNTED LED BLANKOUT	1



WIRED CONDUIT (PVC) AND ELECTRICAL CONDUIT SLEEVE SCHEDULE

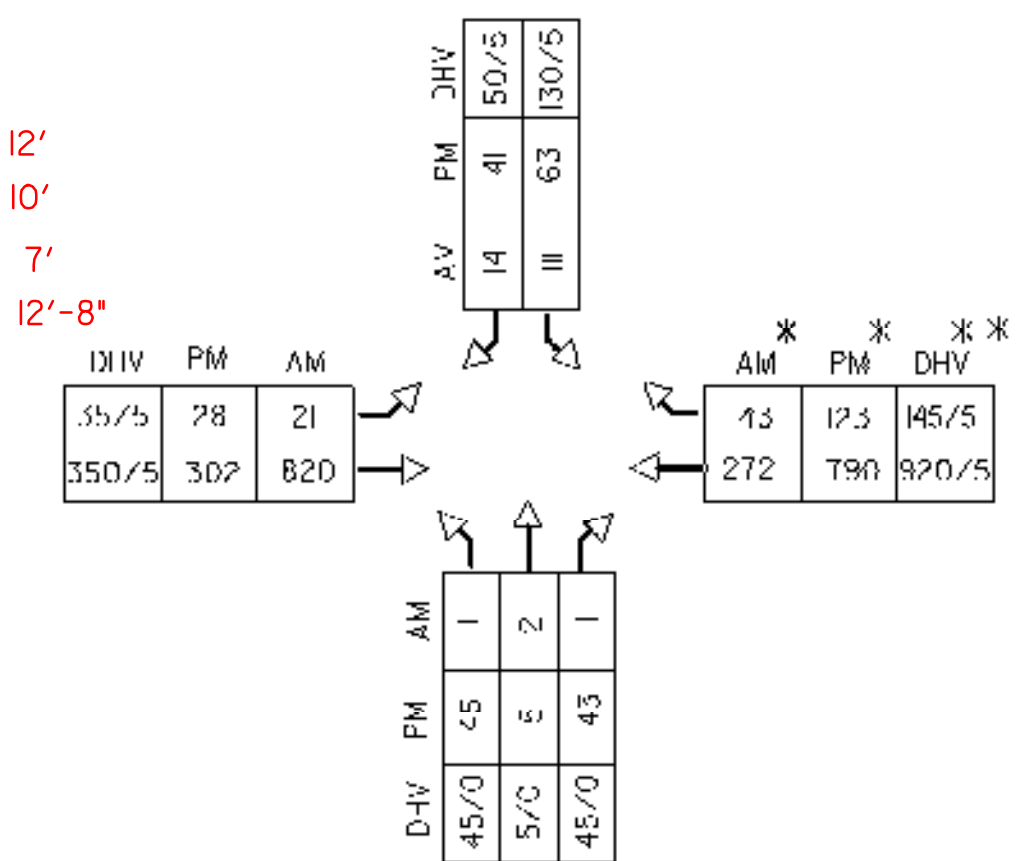
ITEM NUMBER	678.23		678.30		DESCRIPTION
	WIRED CONDUIT	CONDUIT SLEEVE	6"	8"	
FROM/TO	2"	2 1/2"	6"	8"	
POWER TO STANCHION	55		55		POWER (INCLUDES WIRED CONDUIT FOR RISER)
STANCHION TO CABINET	16				POWER
CABINET TO POLE #3	104				POLE #3 WIRING
POLE #3 TO POLE #1	74				POLE #1, POST #1, POST #2, POST #3, POST #4, VIDEO AND LOOP 6 WIRING
POLE #1 TO POST #1	39.3				POST #1, POST #2, POST #3, POST #4, VIDEO AND LOOP 6 WIRING
POST #1 TO POST #2	32.3				POST #2, POST #3, POST #4 AND LOOP 6 WIRING
POST #2 TO POST #3	35.3				POST #3, POST #4 AND LOOP 6 WIRING
POST #3 TO POST #4	34.3				POST #4 AND LOOP 6 WIRING
CABINET TO POLE #2	24				POLE #2 AND LOOP 4A & 4B WIRING
LOOP 2 TO POLE #3	18				LOOP 2 WIRING
LOOP 4A/4B TO POLE #2	12				LOOPS 1A AND 1B WIRING
LOOP 6 TO POST #3	5				LOOP 6 WIRING
SUB-TOTALS	450	371	70	161	159.5
ROUNDING	29	5	4		
TOTALS	400	75	165		

* CONDUIT IN SAME SIZES AS POWER
 ** CHARLOTTE ROAD NOT WIRED (SPARE)

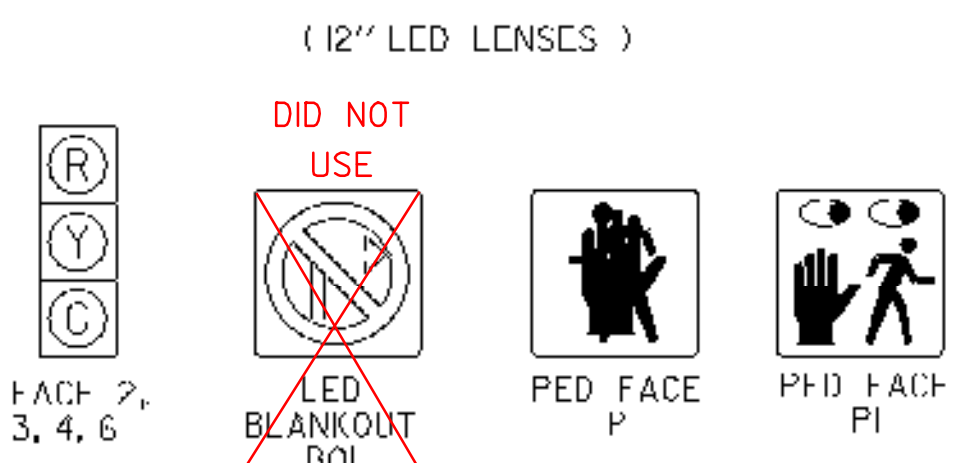
ELECTRICAL CONDUIT SCHEDULE

ITEM 678.21	STATION	TYPE	
S1	5+01, LT. 25.2	SPARE SWEEP AT CABINET (FUTURE INTERCONNECT)	12'
S2	3+68, LT. 22.2	SPARE SWEEP AT POLE #2 (FUTURE INTERCONNECT)	10'
S3	4+90, RT. 31.3	SPARE SWEEP AT POLE #1 (FUTURE INTERCONNECT)	7'
S4	3+91, RT. 27.9	SPARE SWEEP AT POST #4 (FUTURE INTERCONNECT)	12'-8"

2005 AVERAGE WEEKDAY TRAFFIC DATA



SIGNAL FACE ARRANGEMENT



* BASE YEAR TRAFFIC FOR SIGNAL TIMING - 1st YEAR OF OPERATION
 ** DESIGN HOUR VOLUME, % TRUCKS - BASE YEAR + 10 YEARS

NOTE: POI SHALL ILLUMINATE UPON PHASE 9 PEDESTRIAN ACTIVATION. SEE GENERAL NOTE 4 (SHEET 11) FOR FACE 3 POSITIONING.

EQUIPMENT NOTES

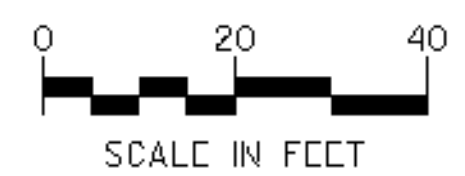
- (A) SEE STANDARDS E-1/1B, 1/1C, 1/2, 1/3, & 1/5 FOR ADDITIONAL INFORMATION.
- (B) SEE TRAFFIC SIGNAL NOTE SHEET 14 AND SINGLE MAST ARM CANNISTER/PODING DETAIL SHEET 15 AND MAST ARM CROSS SECTIONS SHEET 16 FOR ADDITIONAL INFORMATION.

DETECTION SCHEDULE

ITEM 678.22 VEHICLE DETECTOR LOOPS										
LOOP NO.	LANE	CALL	SI/F	TYPE & NO. TURNS	DELAY OR PRESENCE	INDUCTANCE CAL. C.	RESISTANCE CALC. ACT.	IF RAKE TO GROUND	LOCKING MEMORY	
1	SBTH	2	6X40	QUAD 2-4-2	PRESENCE	325	366	0.47	1.03	0
2	CBRT	4	6X40	QUAD 2 4 2	5 SEC DELAY	350	348	0.65	0.82	0
3	EBLT	4	6X40	QUAD 2-4-2	PRESENCE	350	341	0.69	0.79	0
4	NBTH	6	6X40	QUAD 2-4-2	PRESENCE	360	426	0.11	1.67	0

ALL CALCULATED VALUES ARE AT THE CONTROLLER. MEASURED VALUES MUST BE FILLED IN PRIOR TO TEST PERIOD.

DATUM
 VERTICAL NAVD 88
 HORIZONTAL NAD 83



LEGEND

NEW	LEGEND
[Symbol]	CONTROL CABINET
[Symbol]	SIGNAL HEAD
[Symbol]	CONDUIT
[Symbol]	VEHICLE LOOPS
[Symbol]	PEDESTRIAN POST
[Symbol]	STANCHION
[Symbol]	SPARE SWEEP
[Symbol]	MAST ARM
[Symbol]	AUDIBLE PEDESTRIAN INDICATOR
[Symbol]	PEDESTRIAN PUSH BUTTON
[Symbol]	LED BLANKOUT
[Symbol]	VIDEO BASED DETECTION
[Symbol]	OPTIONAL VIDEO LOCATION

PROJECT NAME: HINFSBURG
 PROJECT NUMBER: HES 021-1(21)
 FILE NAME: z01b208sig.dgn
 PROJECT LEADER: G. BAKOS
 DESIGNER: D. PECK
 TRAFFIC SIGNAL PLAN
 PLOT DATE: 5/4/2007
 DRAWN BY: D. PECK
 CHECKED BY: C. BAKOS
 SHEET 13 OF 19

