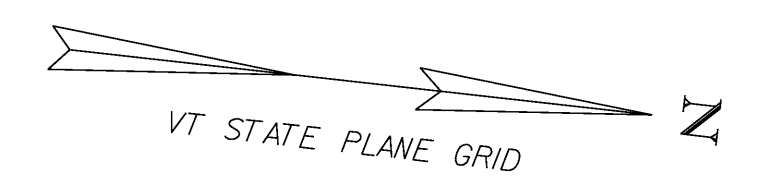


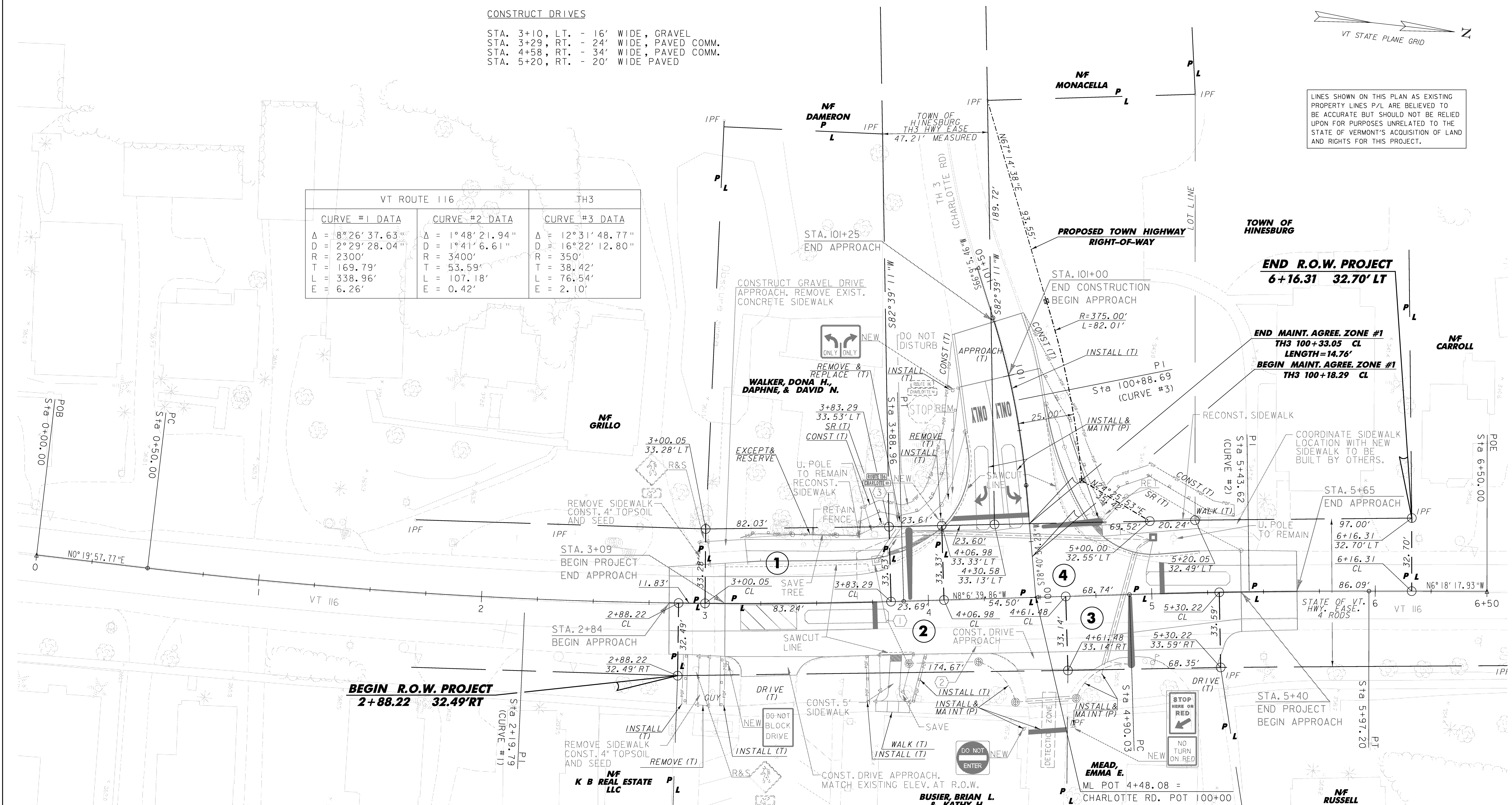
CONSTRUCT DRIVES

STA. 3+10, LT. - 16' WIDE, GRAVEL
 STA. 3+29, RT. - 24' WIDE, PAVED COMM.
 STA. 4+58, RT. - 34' WIDE, PAVED COMM.
 STA. 5+20, RT. - 20' WIDE PAVED



LINES SHOWN ON THIS PLAN AS EXISTING PROPERTY LINES P/L ARE BELIEVED TO BE ACCURATE BUT SHOULD NOT BE RELIED UPON FOR PURPOSES UNRELATED TO THE STATE OF VERMONT'S ACQUISITION OF LAND AND RIGHTS FOR THIS PROJECT.

VT ROUTE 116		TH3
CURVE #1 DATA	CURVE #2 DATA	CURVE #3 DATA
Δ = 18°26'37.63"	Δ = 1°48'21.94"	Δ = 12°31'48.77"
D = 2°29'28.04"	D = 1°41'6.61"	D = 16°22'12.80"
R = 2300'	R = 3400'	R = 350'
T = 169.79'	T = 53.59'	T = 38.42'
L = 338.96'	L = 107.18'	L = 76.54'
E = 6.26'	E = 0.42'	E = 2.10'



NOTE: THE DRAINAGE STRUCTURE RIM AND INVERT ELEVATIONS ARE BASED ON SURVEY INFORMATION FROM AERIAL SURVEY, AND CONTRACTOR SHALL SET ACTUAL RIM ELEVATIONS ONE INCH BELOW FINISHED PAVEMENT ELEVATIONS, AND CONTRACTOR SHALL FIELD CHECK PROPOSED PIPE INVERTS BEFORE ORDERING DRAINAGE STRUCTURES.

- ① STA. 3+77.3, LT. 18.6 - STA. 3+87.8, LT. 33.8
 NEW D1, TYPE D
 RIM ELEV. = 355.33
 NEW 12" x 15 LF PCCSP
 INV. OUT = 350.12
- ② STA. 4+21.3, RT. 19.5
 ADJUST CB (TO NEW GRADE)
 RIM ELEV. = 355.75
- ③ STA. 3+87.8, LT. 33.8
 ADJUST CB (TO NEW GRADE)
 REMOVE CB GRATE & FRAME
 REPLACE WITH MH COVER & FRAME
 RIM ELEV. = 353.9 ±



DATUM

VERTICAL	NAVD 88
HORIZONTAL	NAD 83

RIGHT OF WAY PLAN	
PROJECT: HINESBURG	PROJECT NO.: HES 021-1(21)
DESIGN FILE NAME: ...te\plansear\row\04b2081.dgn	PLOT DATE: 1/11/2007
IPARM FILE NAME:	SURVEY DATE: 2004
SURVEYED BY: COL-EAST, Inc.	DRAWN BY: D. PECK
SQUAD LEADER: G. BAKOS	SHEET: 8 OF 19
TEXT FILE:	